

9602 PAGE AVENUE
A SIGNATURE PROPERTY
BY

W
W O R M A L D



FRONT ELEVATION

DESIGN BY:

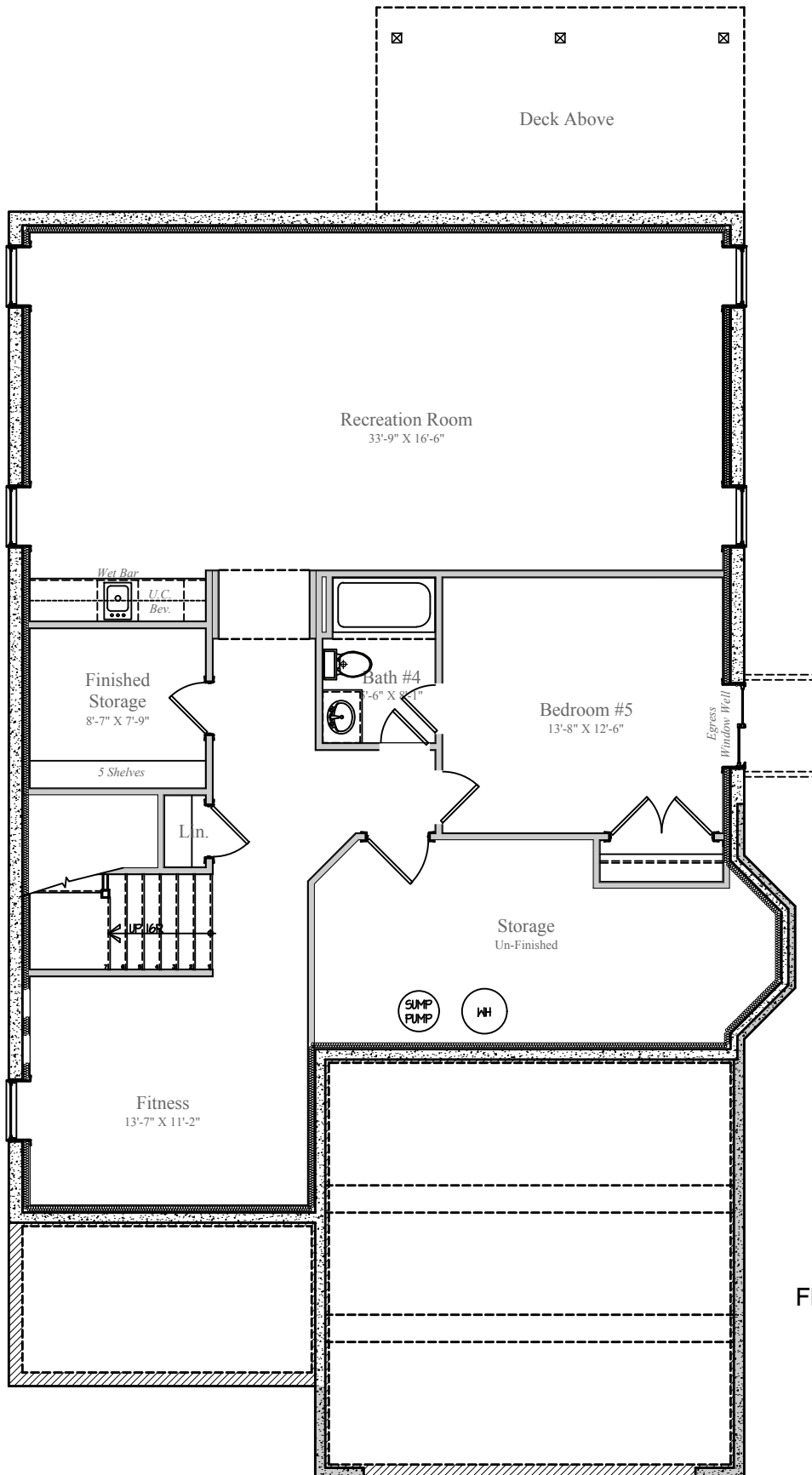


3/1/2020

Design and details are the exclusive property of Wormald Homes, Inc. Unauthorized use is strictly prohibited. Actual product and specifications may vary in dimension or detail from these drawings and are subject to change without notice. Window and door locations vary per elevation. MHBR No. 3514

W
W O R M A L D

9602 PAGE AVENUE



LOWER LEVEL
FINISHED AREA: 1,412 sq.ft.
UN-FINISHED: 222 sq. ft.
DIMENSIONS MAY VARY

DESIGN BY:

W

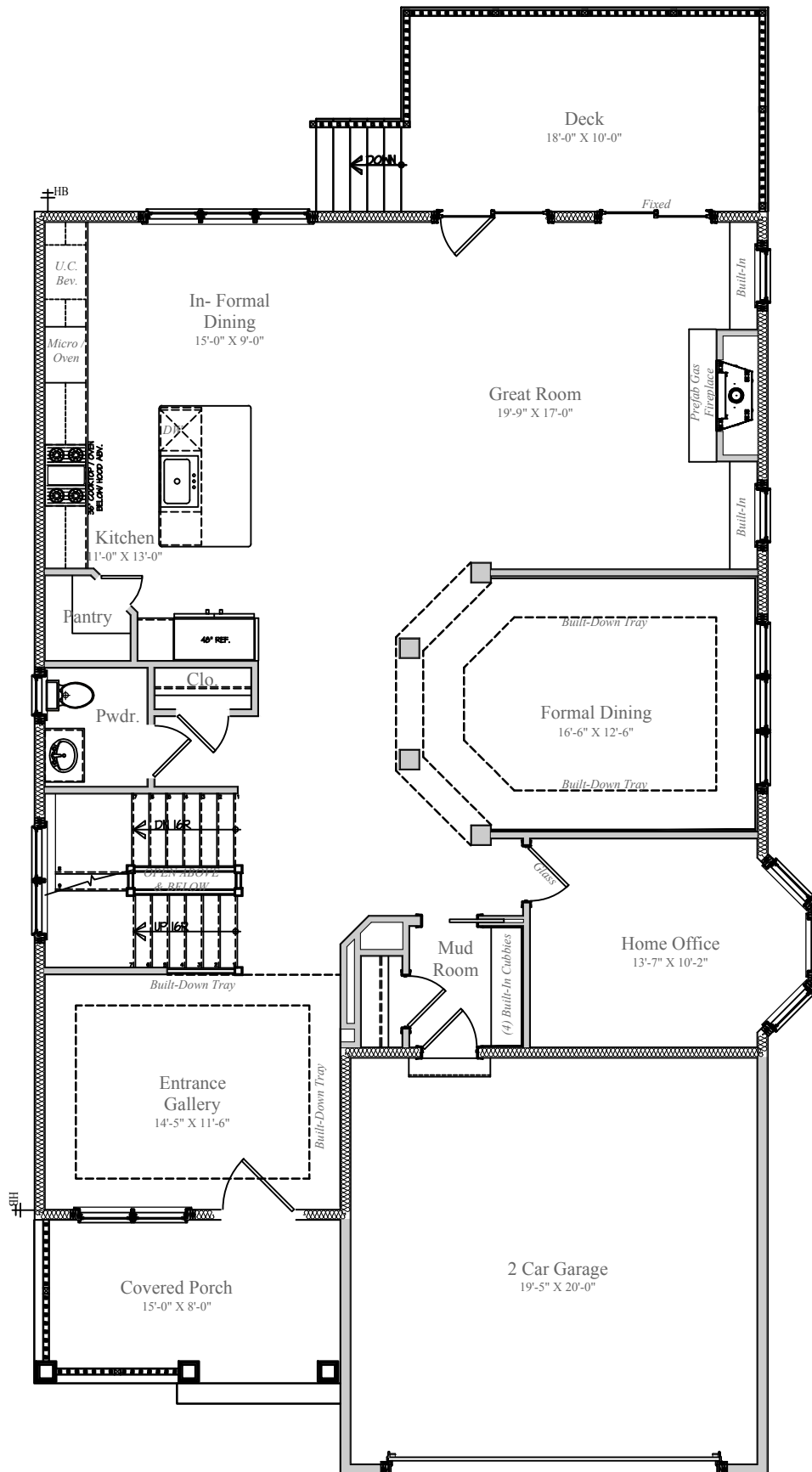
WORMALD



3/1/2020

Design and details are the exclusive property of Wormald Homes, Inc. Unauthorized use is strictly prohibited. Actual product and specifications may vary in dimension or detail from these drawings and are subject to change without notice. Window and door locations vary per elevation. MHBR No. 3514

9602 PAGE AVENUE



MAIN LEVEL
 FINISHED AREA: 1,635 sq.ft.
 GARAGE: 425 sq.ft.
 COVERED PORCH: 120 sq.ft.
 DECK: 180 sq.ft.
 DIMENSIONS MAY VARY

DESIGN BY:



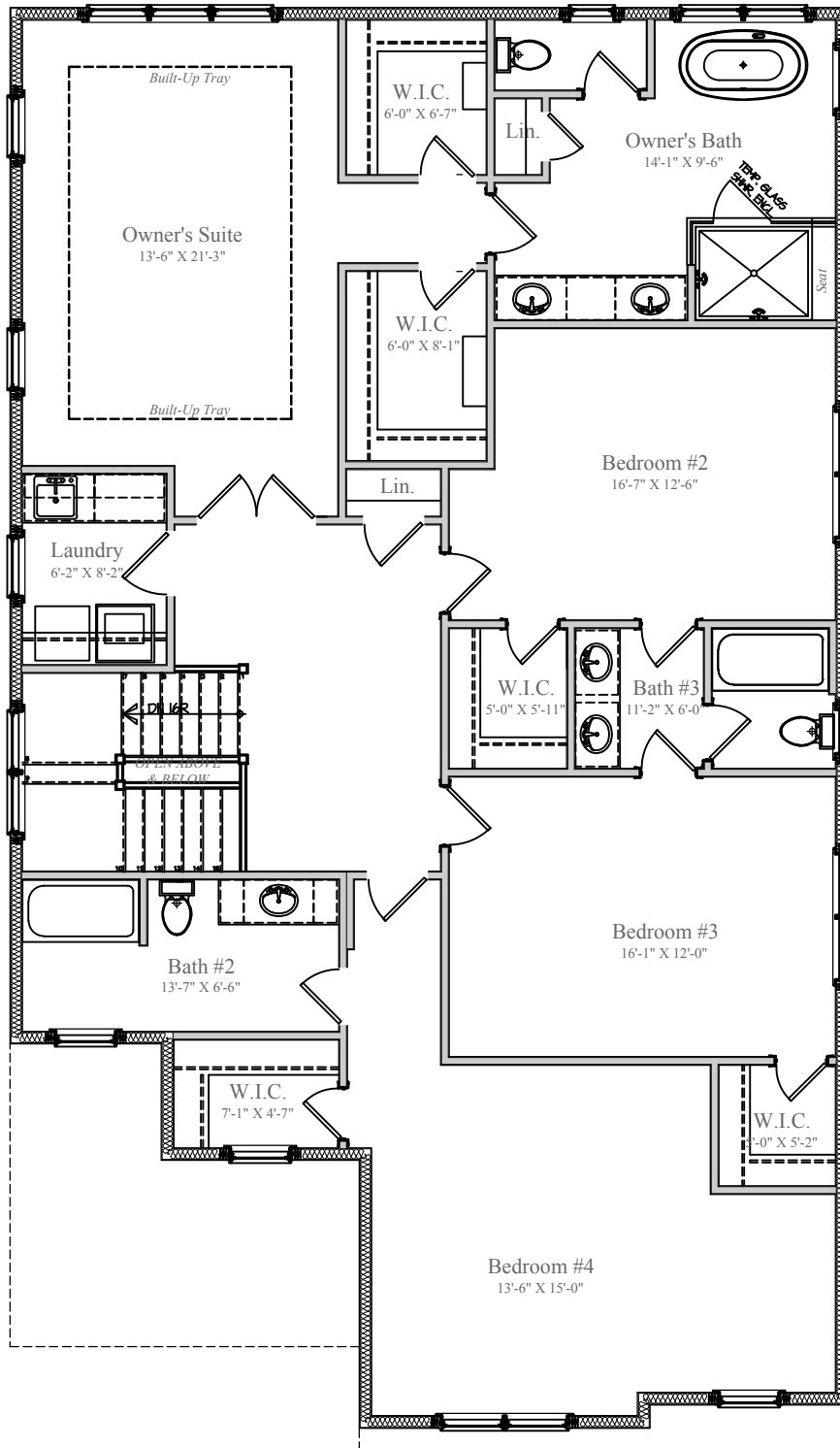
WORMALD



3/1/2020

Design and details are the exclusive property of Wormald Homes, Inc. Unauthorized use is strictly prohibited. Actual product and specifications may vary in dimension or detail from these drawings and are subject to change without notice. Window and door locations vary per elevation. MHBR No. 3514

9602 PAGE AVENUE



UPPER LEVEL
FINISHED AREA: 1,896 sq. ft.
DIMENSIONS MAY VARY

DESIGN BY:



WORMALD



3/1/2020

Design and details are the exclusive property of Wormald Homes, Inc. Unauthorized use is strictly prohibited. Actual product and specifications may vary in dimension or detail from these drawings and are subject to change without notice. Window and door locations vary per elevation. MHBR No. 3514