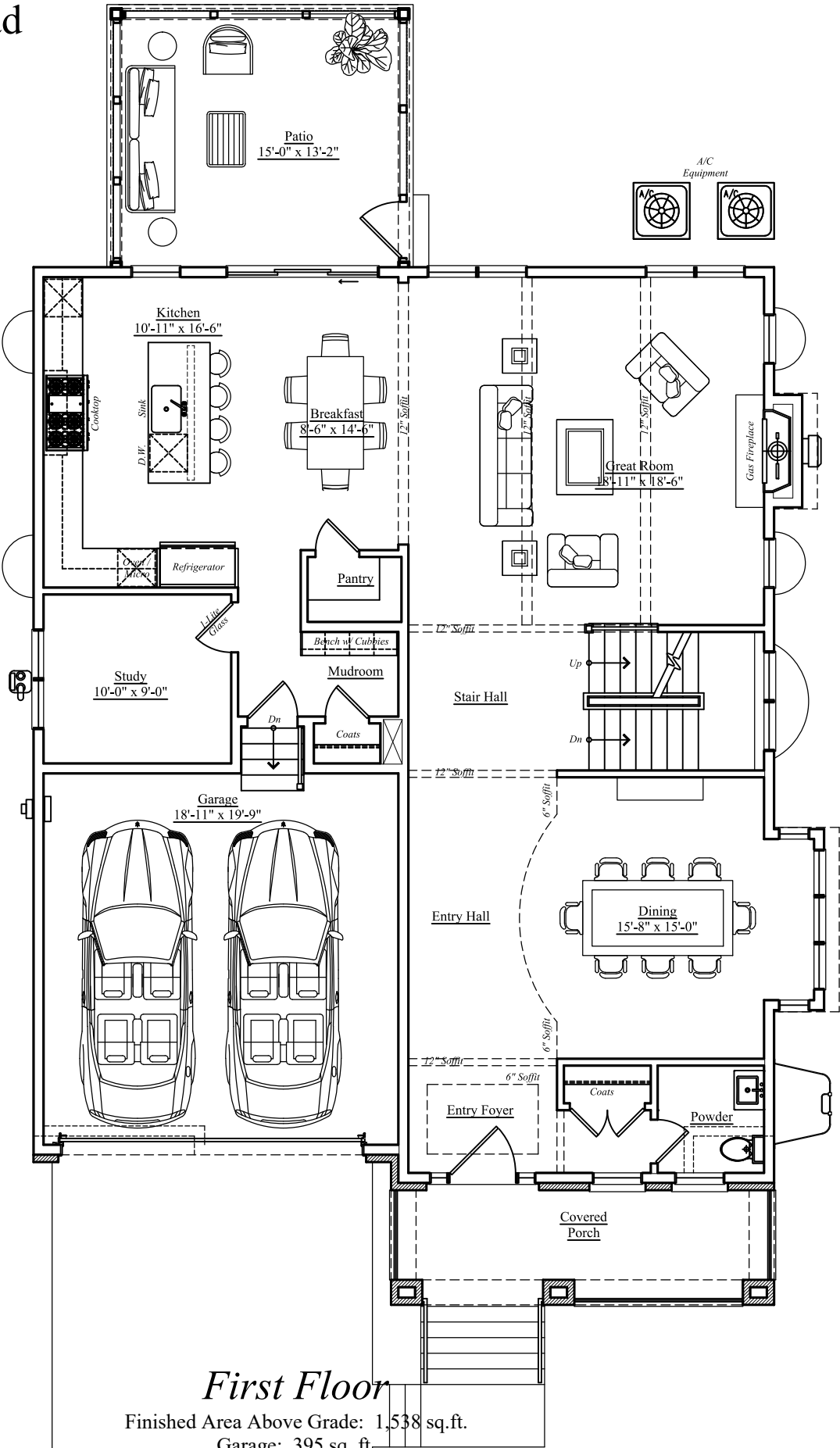


8802 Ridge Road  
Bethesda, MD



*First Floor*

Finished Area Above Grade: 1,538 sq.ft.

Garage: 395 sq. ft.

Screened Porch: 219 sq.ft., Front Porch: 124 sq. ft.

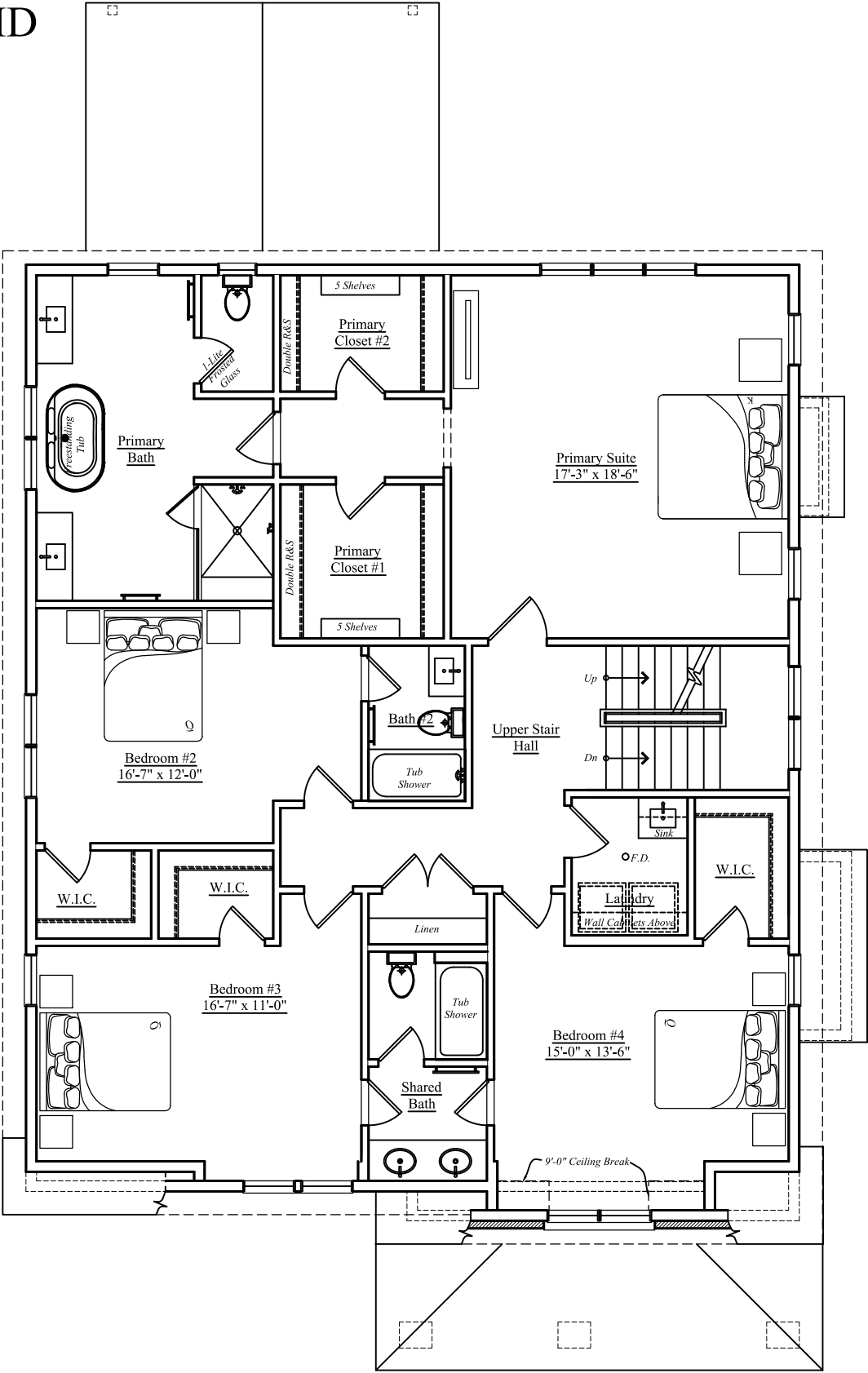
Finished square footage calculations for this house were made based on plan dimensions only and may vary from the finished square footage of the house as built. Areas calculated per the American National Standard For Single-Family Residential Buildings, Approved June 2013: ANSI Z765-2013  
Note: Stormwater Planter Design subject to change.



11/24/2024



8802 Ridge Road  
Bethesda, MD



*Second Floor*

Finished Area Above Grade: 1,879 sq.ft.

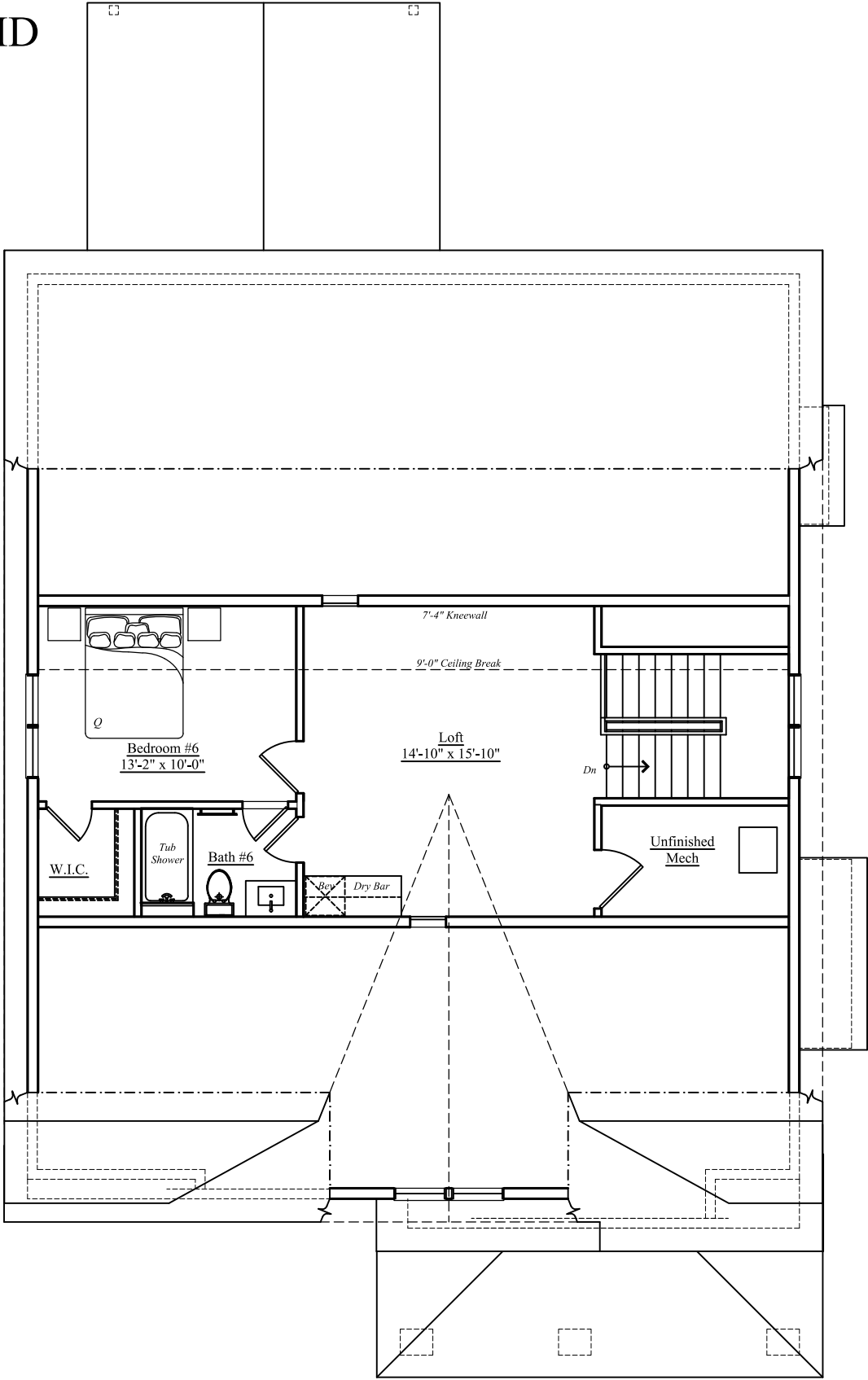
Finished square footage calculations for this house were made based on plan dimensions only and may vary from the finished square footage of the house as built. Areas calculated per the American National Standard For Single-Family Residential Buildings, Approved June 2013: ANSI Z765-2013  
Note: Stormwater Planter Design subject to change.



11/24/2024



8802 Ridge Road  
Bethesda, MD



*Attic Floor*

Finished Area Above Grade: 581 sq.ft.

Unfinished Area Above Grade: 63 sq.ft.

Finished square footage calculations for this house were made based on plan dimensions only and may vary from the finished square footage of the house as built. Areas calculated per the American National Standard For

Single-Family Residential Buildings, Approved June 2013: ANSI Z765-2013

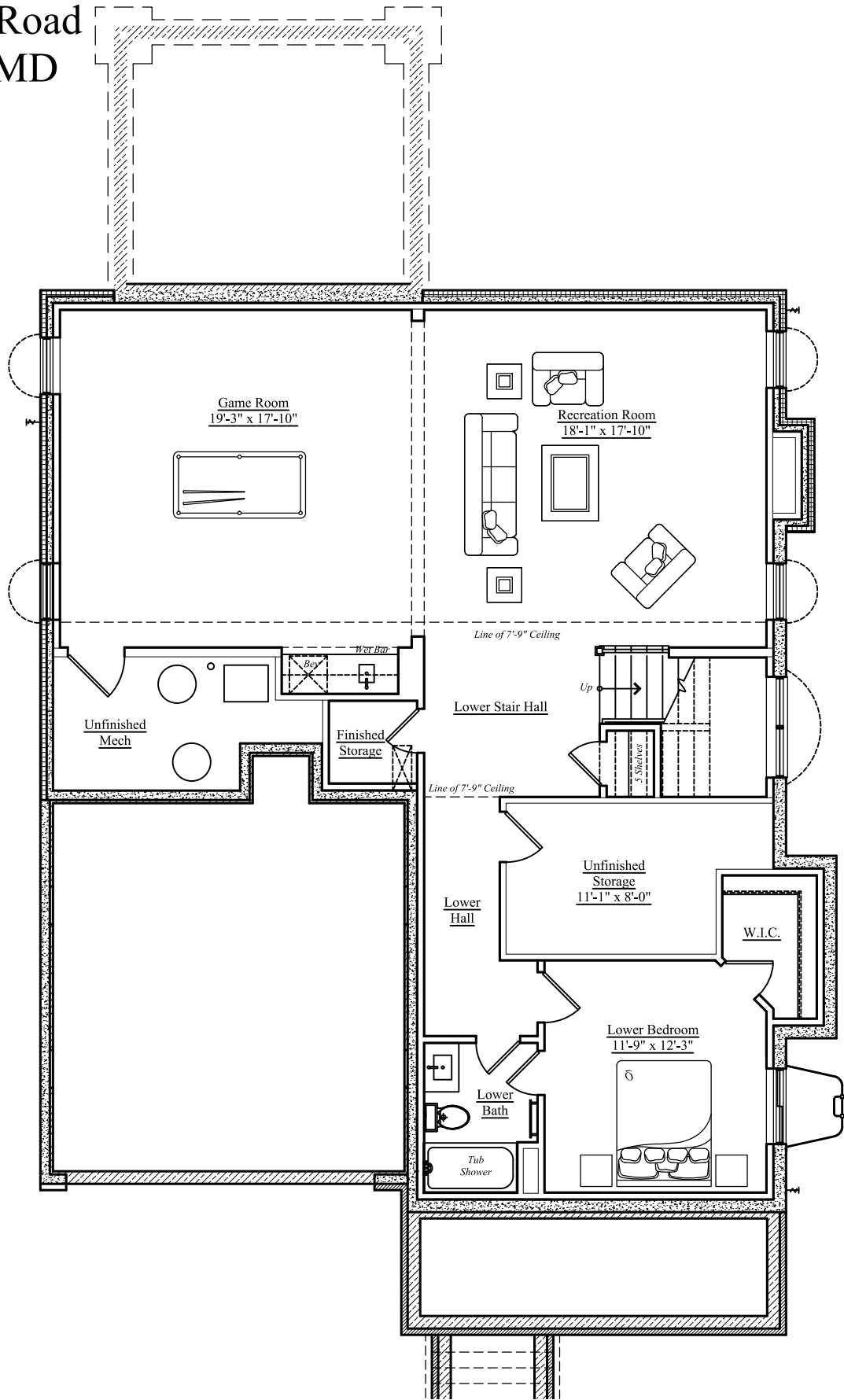
Note: Stormwater Planter Design subject to change.



11/24/2024



8802 Ridge Road  
Bethesda, MD



### Basement Level

Finished Area Below Grade: 1,333 sq.ft.

Unfinished Area Below Grade: 197 sq. ft.

Finished square footage calculations for this house were made based on plan dimensions only and may vary from the finished square footage of the house as built. Areas calculated per the American National Standard For

Single-Family Residential Buildings, Approved June 2013: ANSI Z765-2013

Note: Stormwater Planter Design subject to change.



11/24/2024

**W**  
**WORMALD**

8802 Ridge Road  
Bethesda, MD



*Front Elevation*

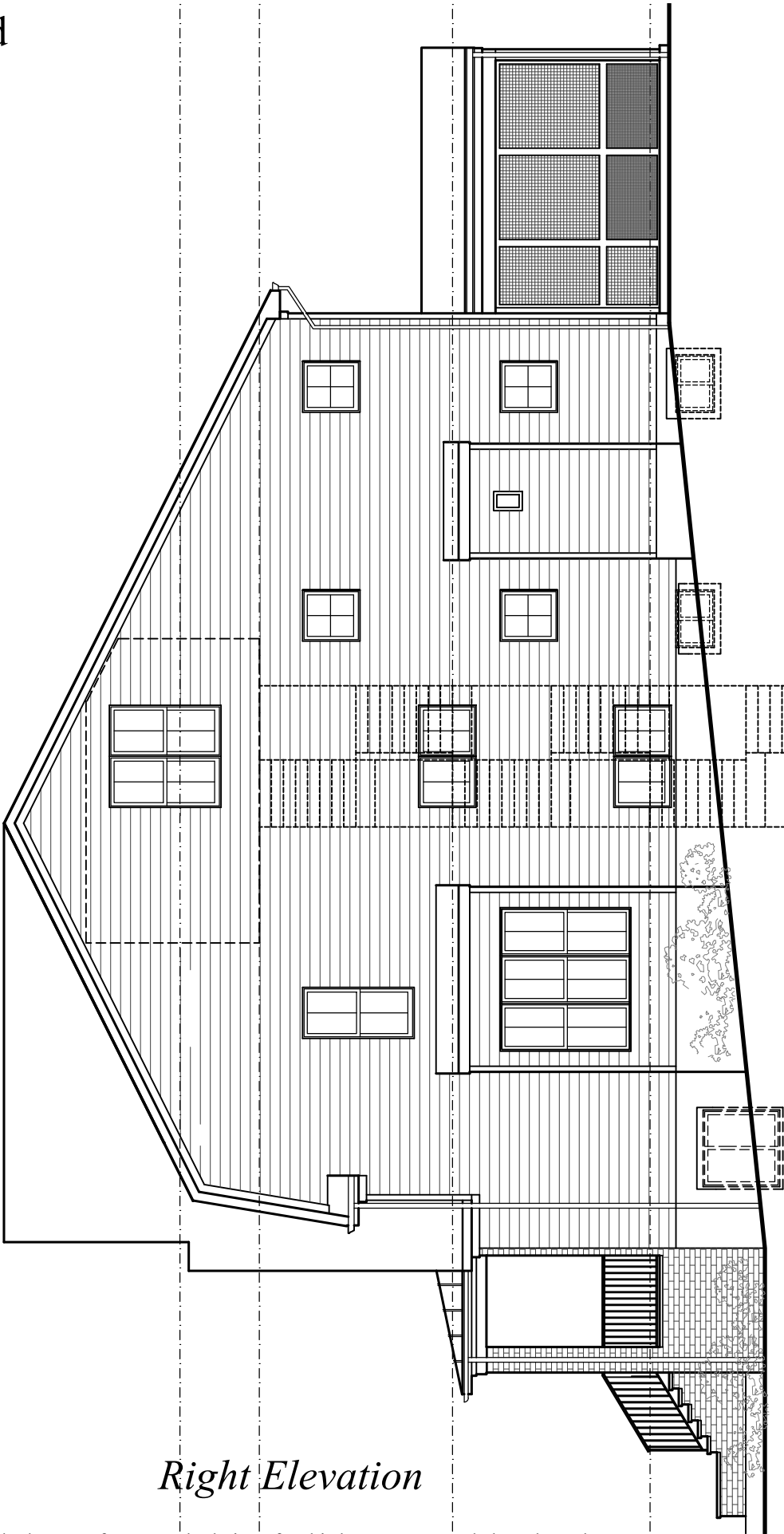
Finished square footage calculations for this house were made based on plan dimensions only and may vary from the finished square footage of the house as built. Areas calculated per the American National Standard For Single-Family Residential Buildings, Approved June 2013: ANSI Z765-2013  
Note: Stormwater Planter Design subject to change.



11/24/2024



8802 Ridge Road  
Bethesda, MD



*Right Elevation*

Finished square footage calculations for this house were made based on plan dimensions only and may vary from the finished square footage of the house as built. Areas calculated per the American National Standard For Single-Family Residential Buildings, Approved June 2013: ANSI Z765-2013  
Note: Stormwater Planter Design subject to change.



11/24/2024

**W**  
**WORMALD**

8802 Ridge Road  
Bethesda, MD



*Rear Elevation*

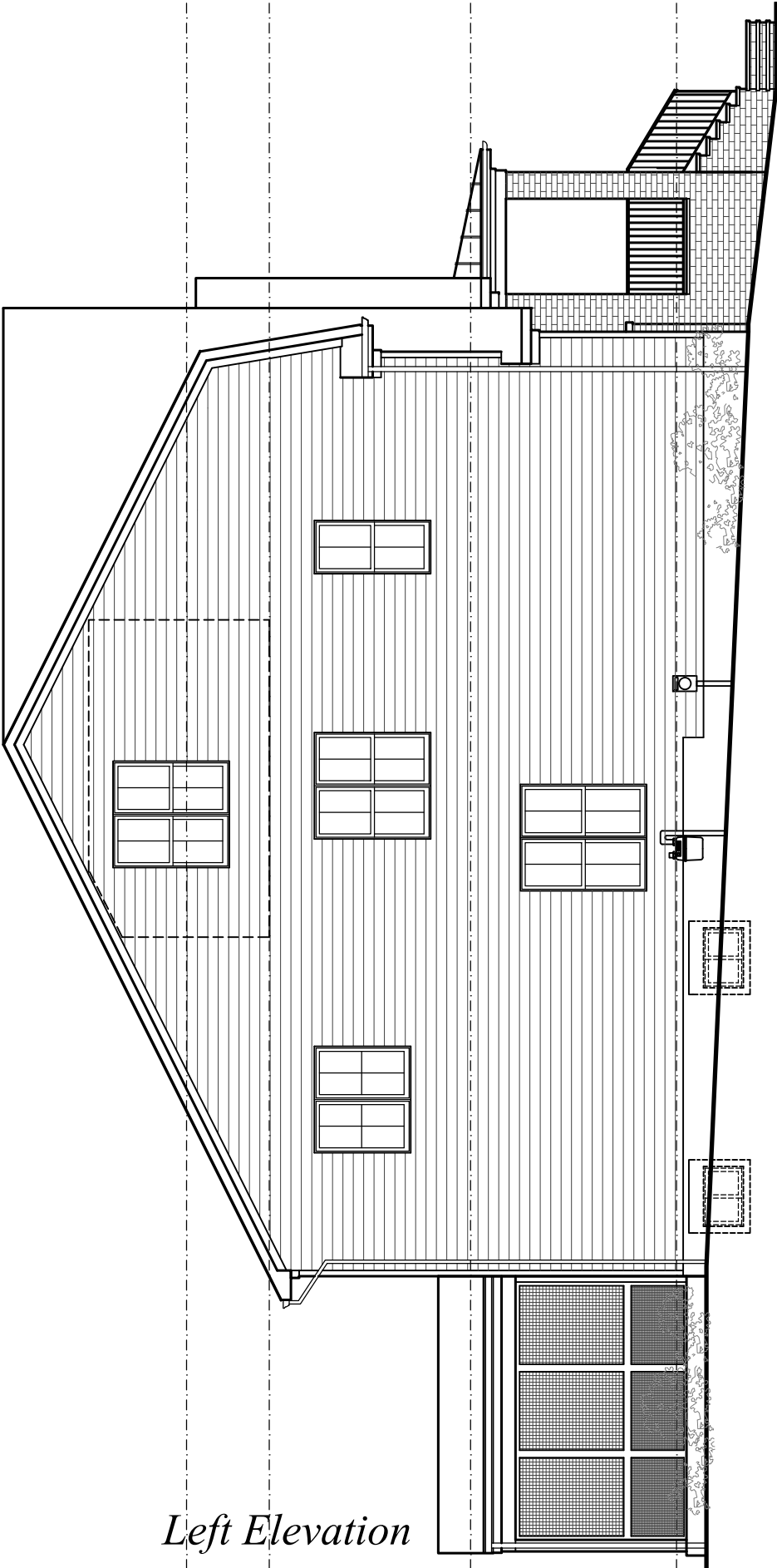
Finished square footage calculations for this house were made based on plan dimensions only and may vary from the finished square footage of the house as built. Areas calculated per the American National Standard For Single-Family Residential Buildings, Approved June 2013: ANSI Z765-2013  
Note: Stormwater Planter Design subject to change.



11/24/2024



8802 Ridge Road  
Bethesda, MD



*Left Elevation*

Finished square footage calculations for this house were made based on plan dimensions only and may vary from the finished square footage of the house as built. Areas calculated per the American National Standard For Single-Family Residential Buildings, Approved June 2013: ANSI Z765-2013  
Note: Stormwater Planter Design subject to change.



11/24/2024

