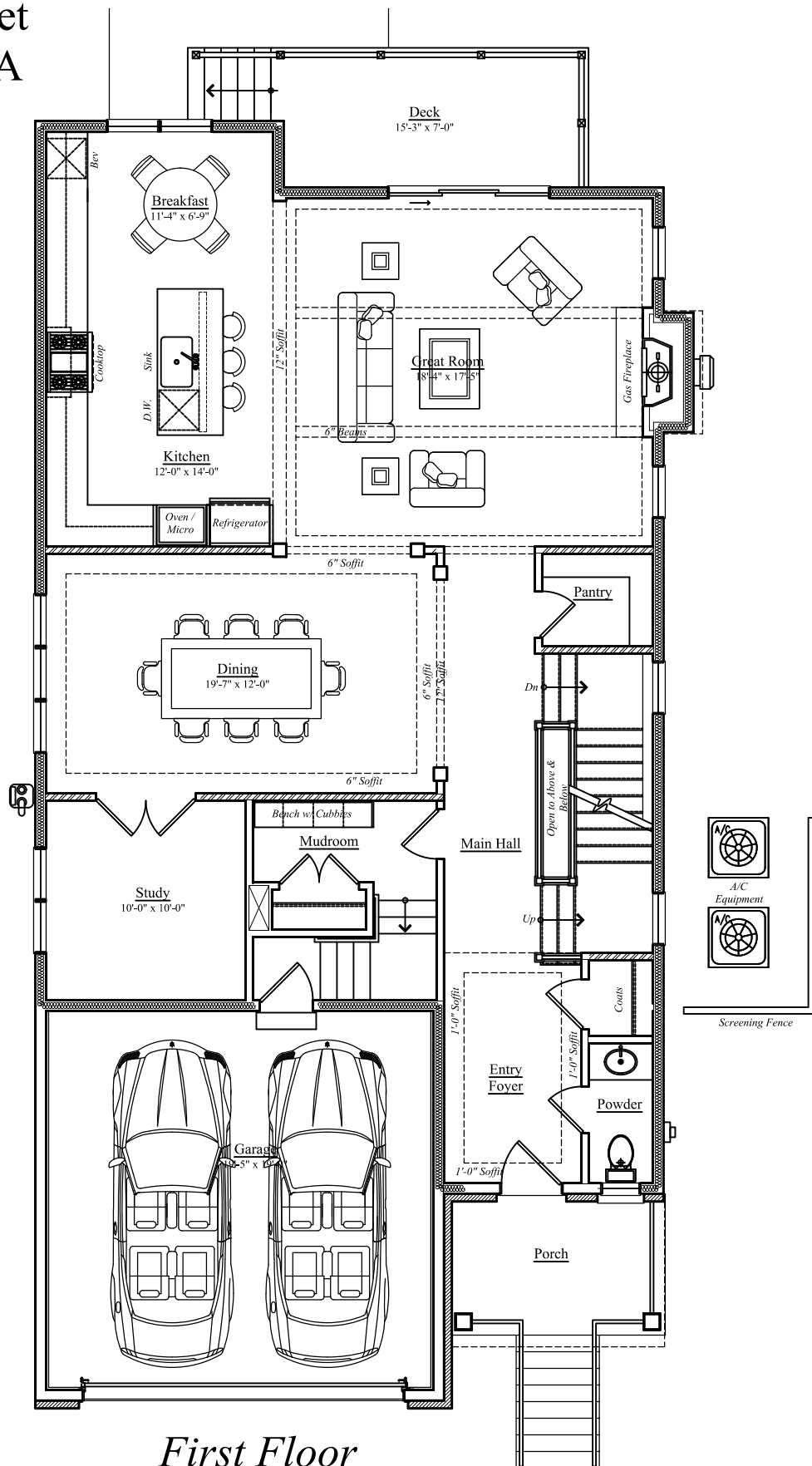


735 20th Street
Arlington, VA



First Floor

Finished Area Above Grade: 1,446 sq. ft.

Garage: 395 sq. ft.

Covered Porch: 71 sq. ft.

Deck: 109 sq. ft.

Finished square footage calculations for this house were made based on plan dimensions only and may vary from the finished square footage of the house as built. Areas calculated per the American National Standard For Single-Family Residential Buildings, Approved June 2013: ANSI Z765-2013

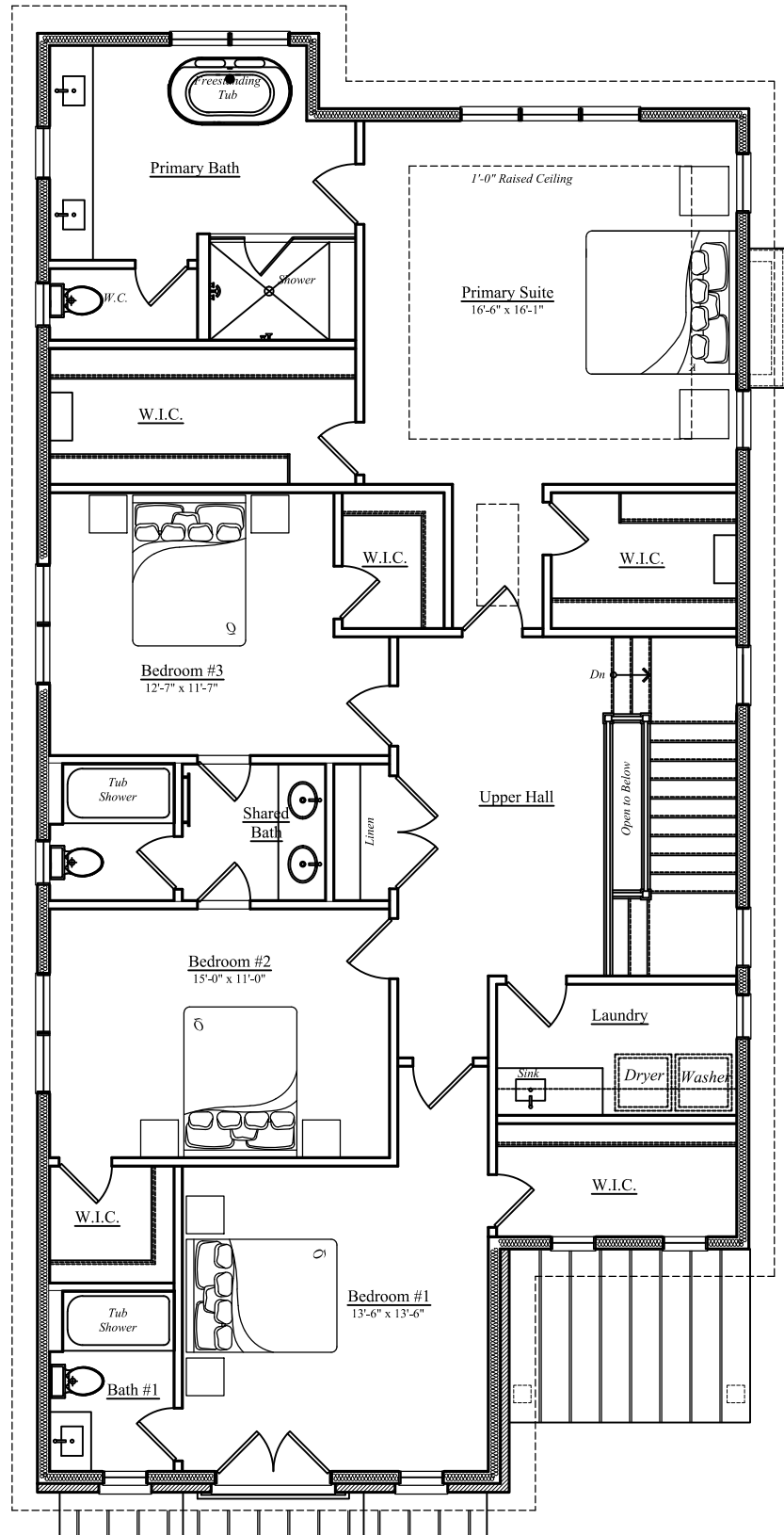
Note: Stormwater Planter Design subject to change.



05/24/2025

W
WORMALD

735 20th Street
Arlington, VA



Second Floor

Finished Area Above Grade: 1,834 sq.ft.

Finished square footage calculations for this house were made based on plan dimensions only and may vary from the finished square footage of the house as built. Areas calculated per the American National Standard For Single-Family Residential Buildings, Approved June 2013: ANSI Z765-2013

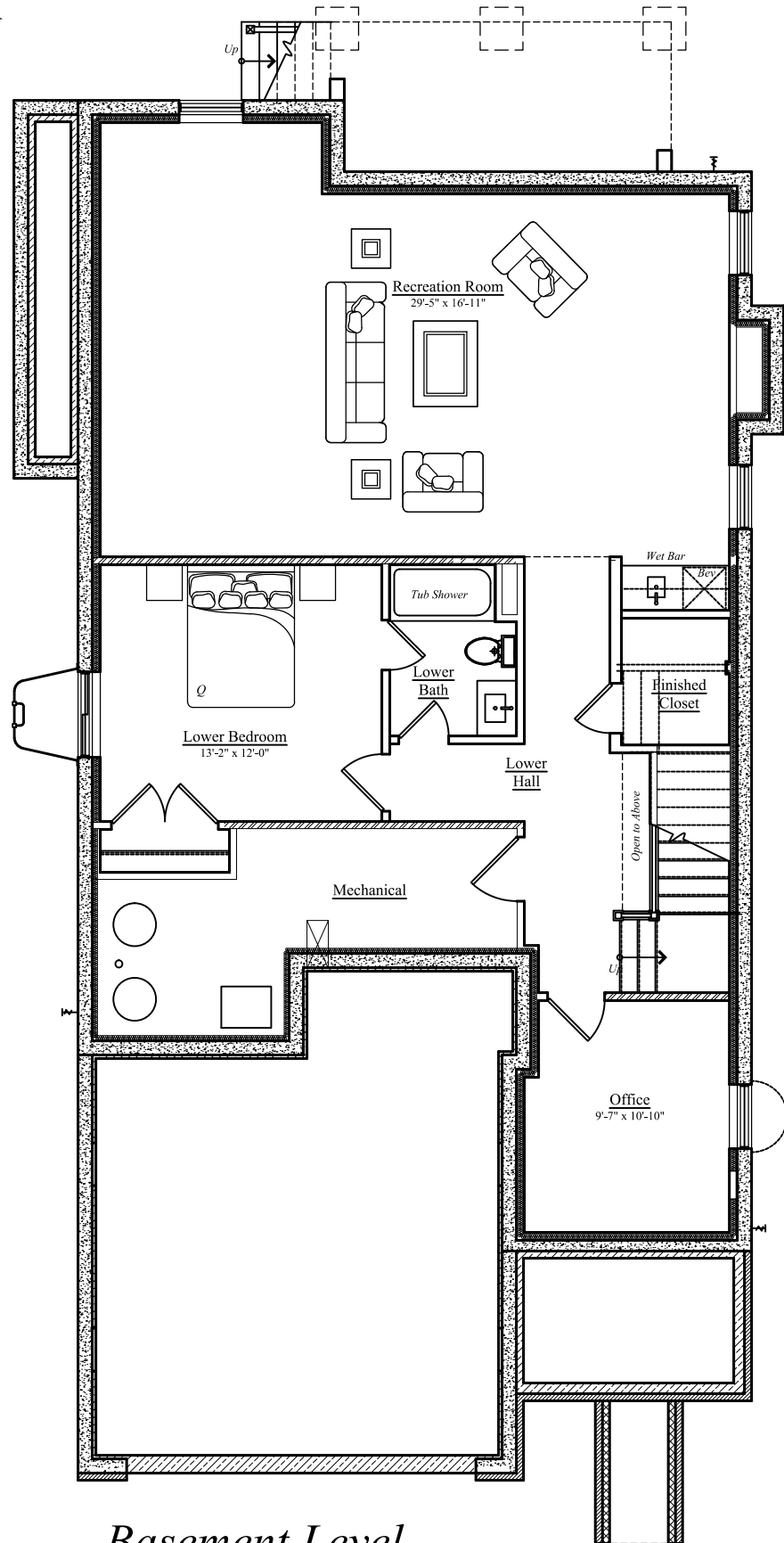
Note: Stormwater Planter Design subject to change.



05/24/2025

W
WORMALD

735 20th Street
Arlington, VA



Basement Level

Finished Area Below Grade: 1,258 sq.ft.

Unfinished Area Below Grade: 158 sq. ft.

Finished square footage calculations for this house were made based on plan dimensions only and may vary from the finished square footage of the house as built. Areas calculated per the American National Standard For

Single-Family Residential Buildings, Approved June 2013: ANSI Z765-2013

Note: Stormwater Planter Design subject to change.



05/24/2025

W
WORMALD

735 20th Street
Arlington, VA



Front Elevation

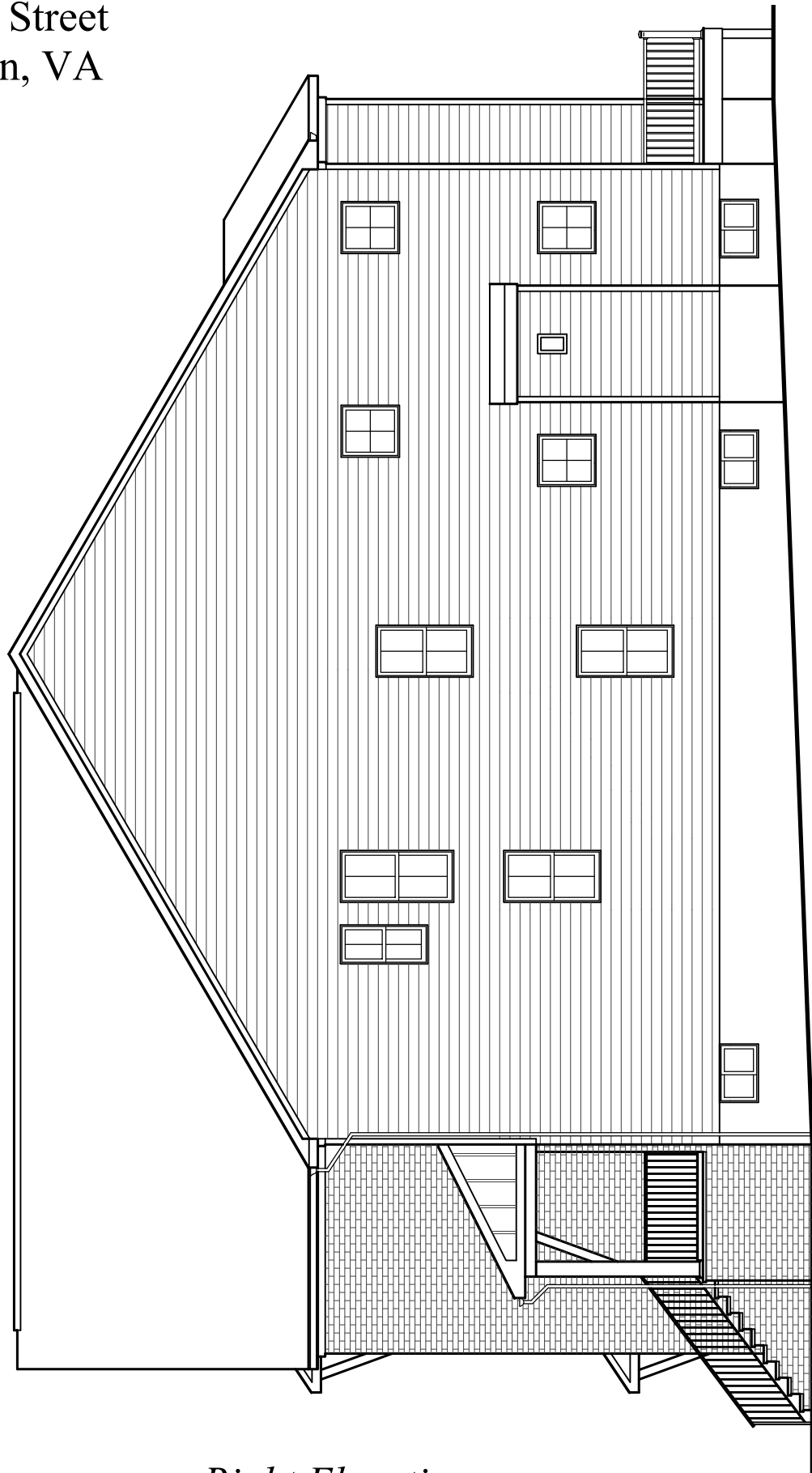
Finished square footage calculations for this house were made based on plan dimensions only and may vary from the finished square footage of the house as built. Areas calculated per the American National Standard For Single-Family Residential Buildings, Approved June 2013: ANSI Z765-2013
Note: Stormwater Planter Design subject to change.



05/24/2025

W
WORMALD

735 20th Street
Arlington, VA



Right Elevation

Finished square footage calculations for this house were made based on plan dimensions only and may vary from the finished square footage of the house as built. Areas calculated per the American National Standard For Single-Family Residential Buildings, Approved June 2013: ANSI Z765-2013
Note: Stormwater Planter Design subject to change.



05/24/2025

W
W O R M A L D

735 20th Street
Arlington, VA



Rear Elevation

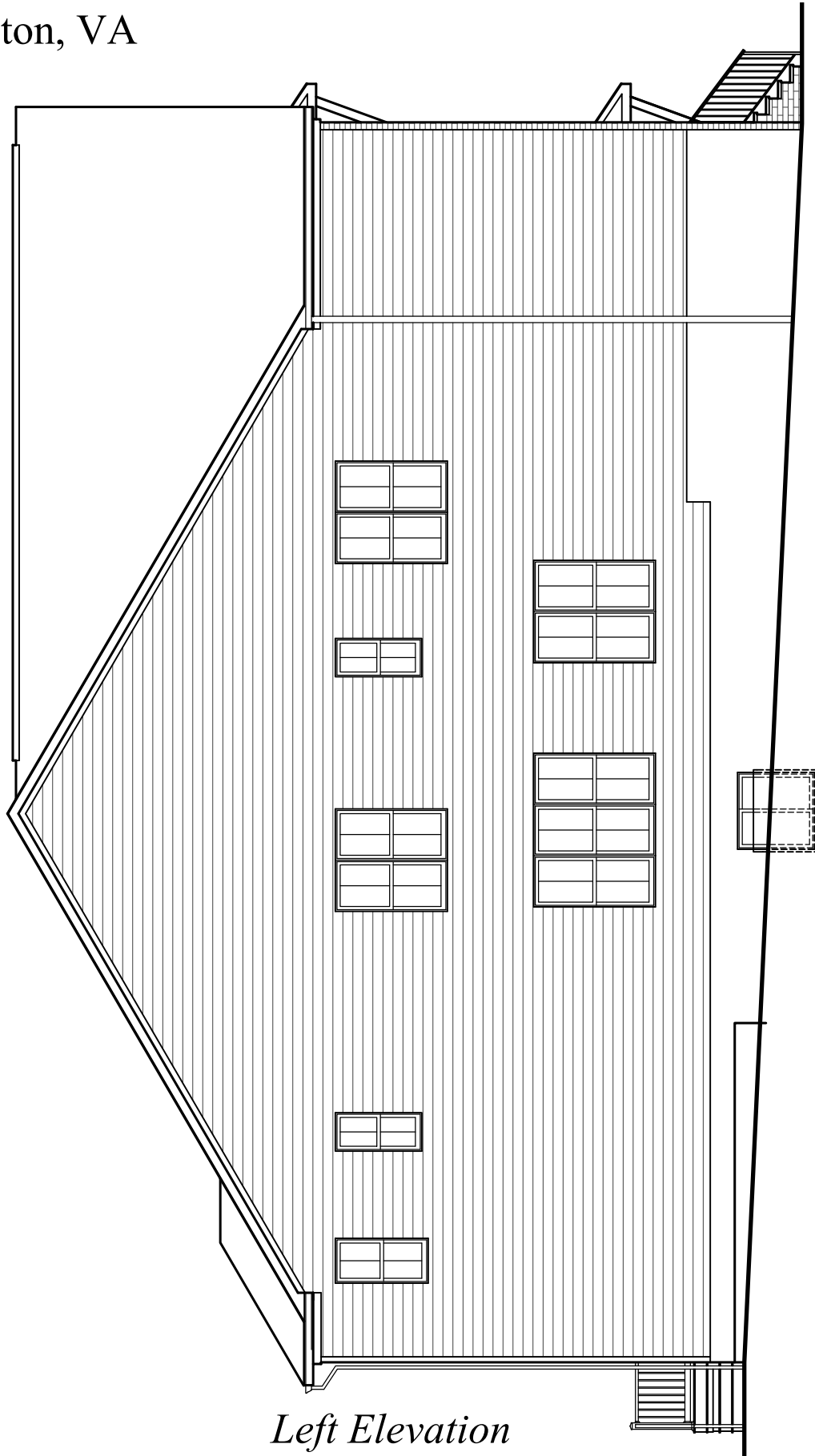
Finished square footage calculations for this house were made based on plan dimensions only and may vary from the finished square footage of the house as built. Areas calculated per the American National Standard For Single-Family Residential Buildings, Approved June 2013: ANSI Z765-2013
Note: Stormwater Planter Design subject to change.



05/24/2025

W
WORMALD

735 20th Street
Arlington, VA



Left Elevation

Finished square footage calculations for this house were made based on plan dimensions only and may vary from the finished square footage of the house as built. Areas calculated per the American National Standard For Single-Family Residential Buildings, Approved June 2013: ANSI Z765-2013
Note: Stormwater Planter Design subject to change.



05/24/2025

W
ORMALD