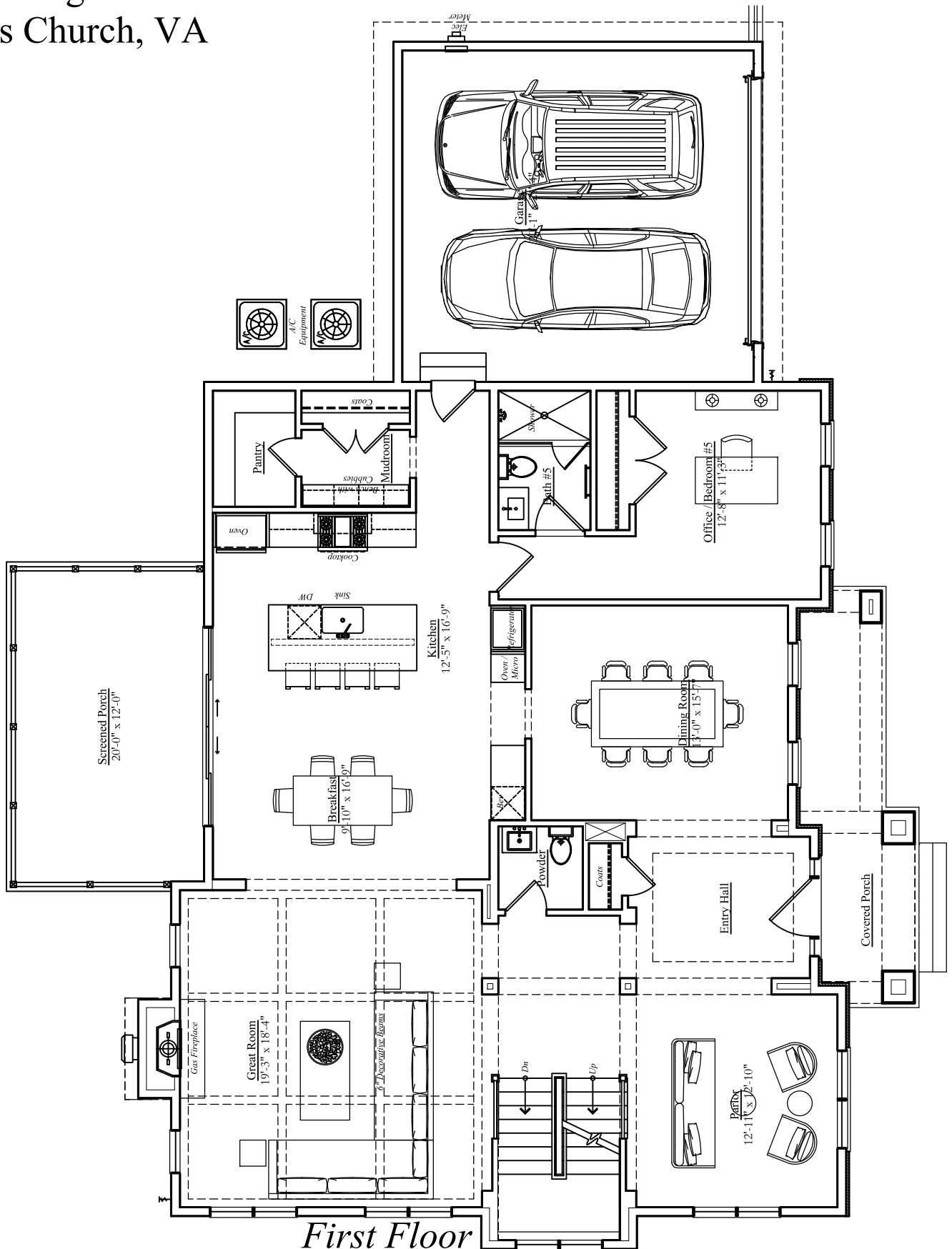


7107 Penguin Place Falls Church, VA



Finished Area Above Grade: 1,987 sq.ft.

Garage: 463 sq. ft.

Deck: 238 sq.ft., Front Porch: 138 sq. ft.

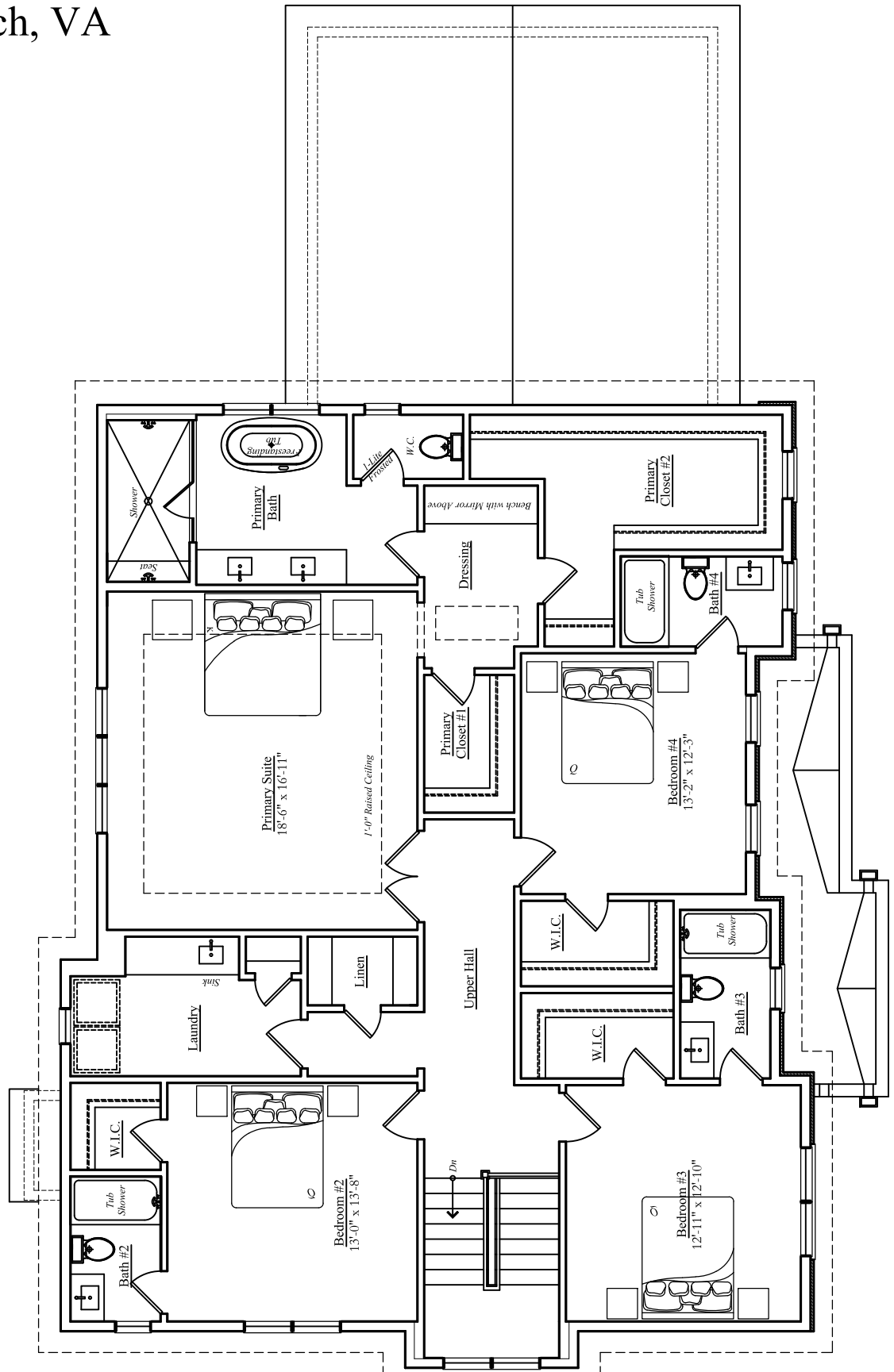
Finished square footage calculations for this house were made based on plan dimensions only and may vary from the finished square footage of the house as built. Areas calculated per the American National Standard For Single-Family Residential Buildings, Approved June 2013: ANSI Z765-2013
Note: Stormwater Planter Design subject to change.



12/01/2025

W
WORMALD

7107 Penguin Place
Falls Church, VA



Second Floor

Finished Area Above Grade: 1,975 sq.ft.

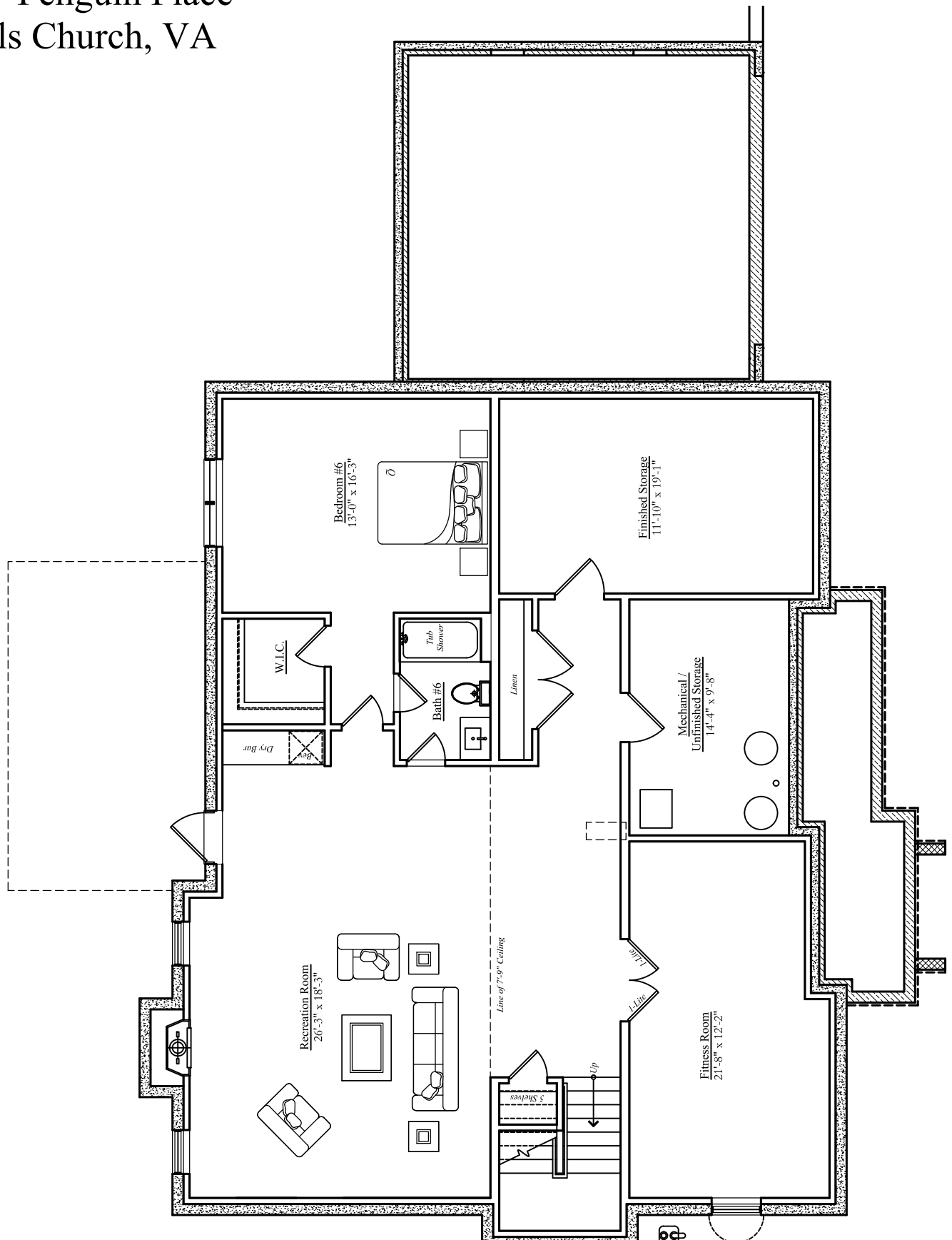
Finished square footage calculations for this house were made based on plan dimensions only and may vary from the finished square footage of the house as built. Areas calculated per the American National Standard For Single-Family Residential Buildings, Approved June 2013: ANSI Z765-2013
Note: Stormwater Planter Design subject to change.



12/01/2025

W
WORMALD

7107 Penguin Place
Falls Church, VA



Basement Level

Finished Area Below Grade: 1,831 sq.ft.

Unfinished Area Below Grade: 146 sq. ft.

Finished square footage calculations for this house were made based on plan dimensions only and may vary from the finished square footage of the house as built. Areas calculated per the American National Standard For

Single-Family Residential Buildings, Approved June 2013: ANSI Z765-2013

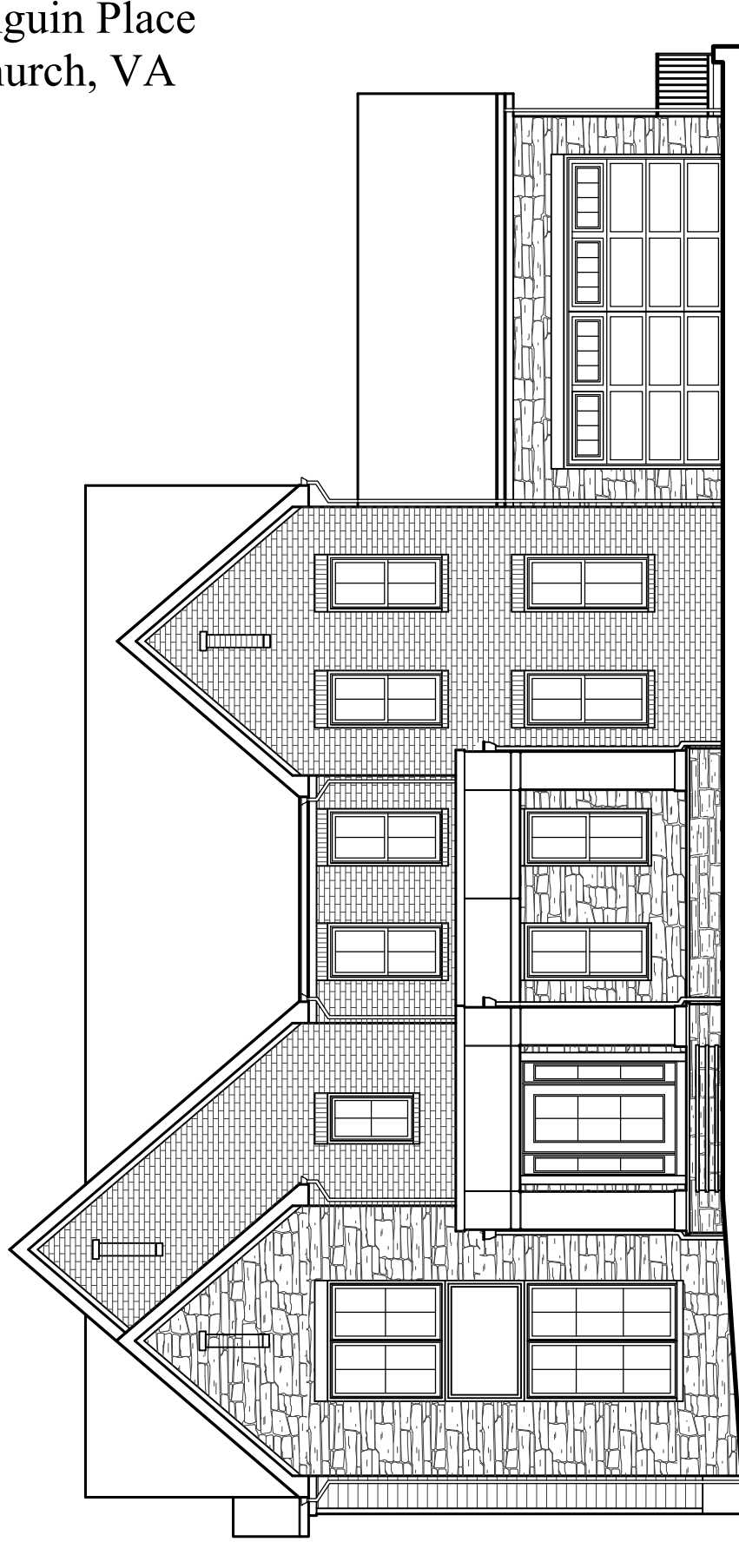
Note: Stormwater Planter Design subject to change.



12/01/2025

W
WORMALD

7107 Penguin Place
Falls Church, VA



Front Elevation

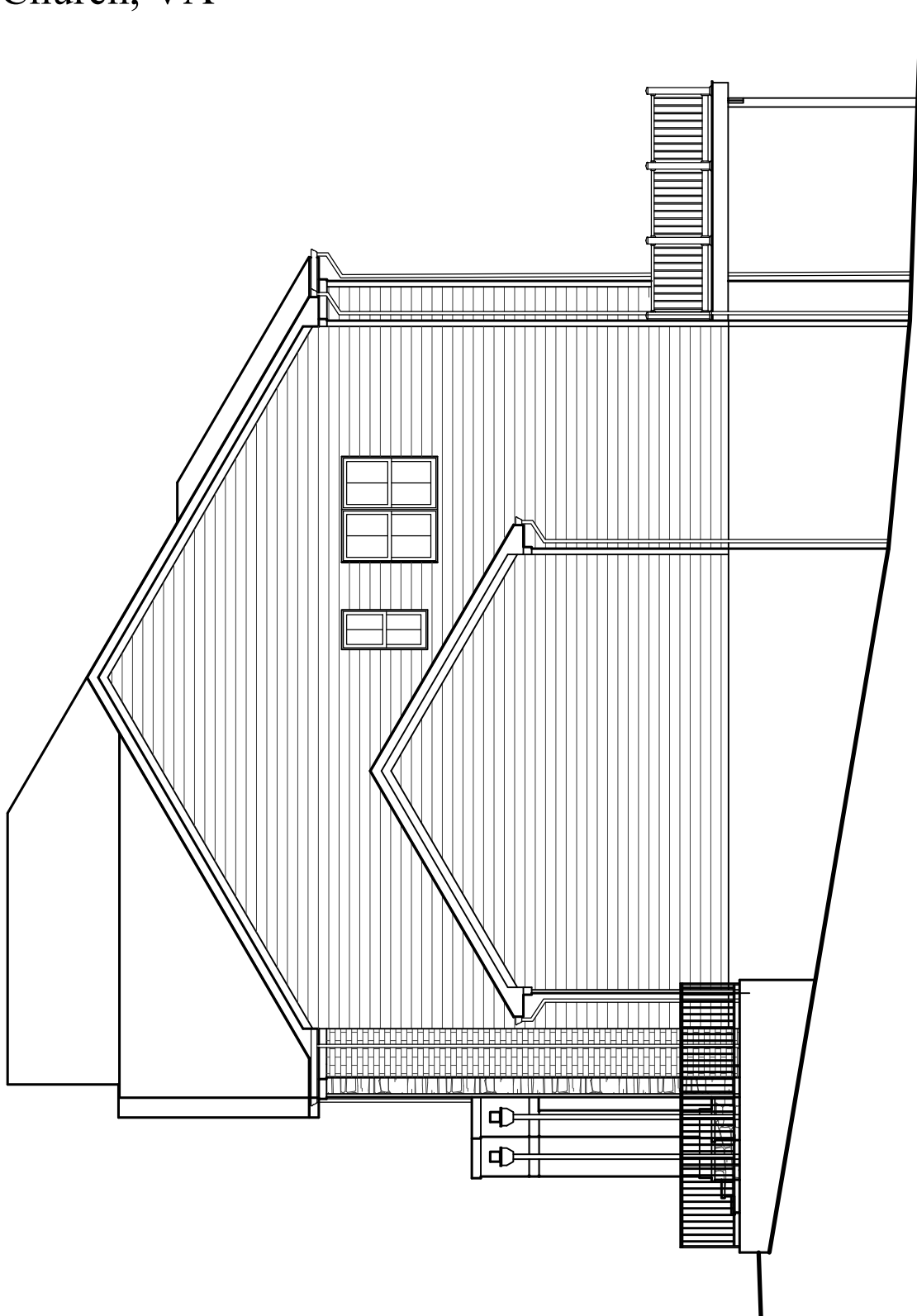
Finished square footage calculations for this house were made based on plan dimensions only and may vary from the finished square footage of the house as built. Areas calculated per the American National Standard For Single-Family Residential Buildings, Approved June 2013: ANSI Z765-2013
Note: Stormwater Planter Design subject to change.



12/01/2025

W
W O R M A L D

7107 Penguin Place
Falls Church, VA



Right Elevation

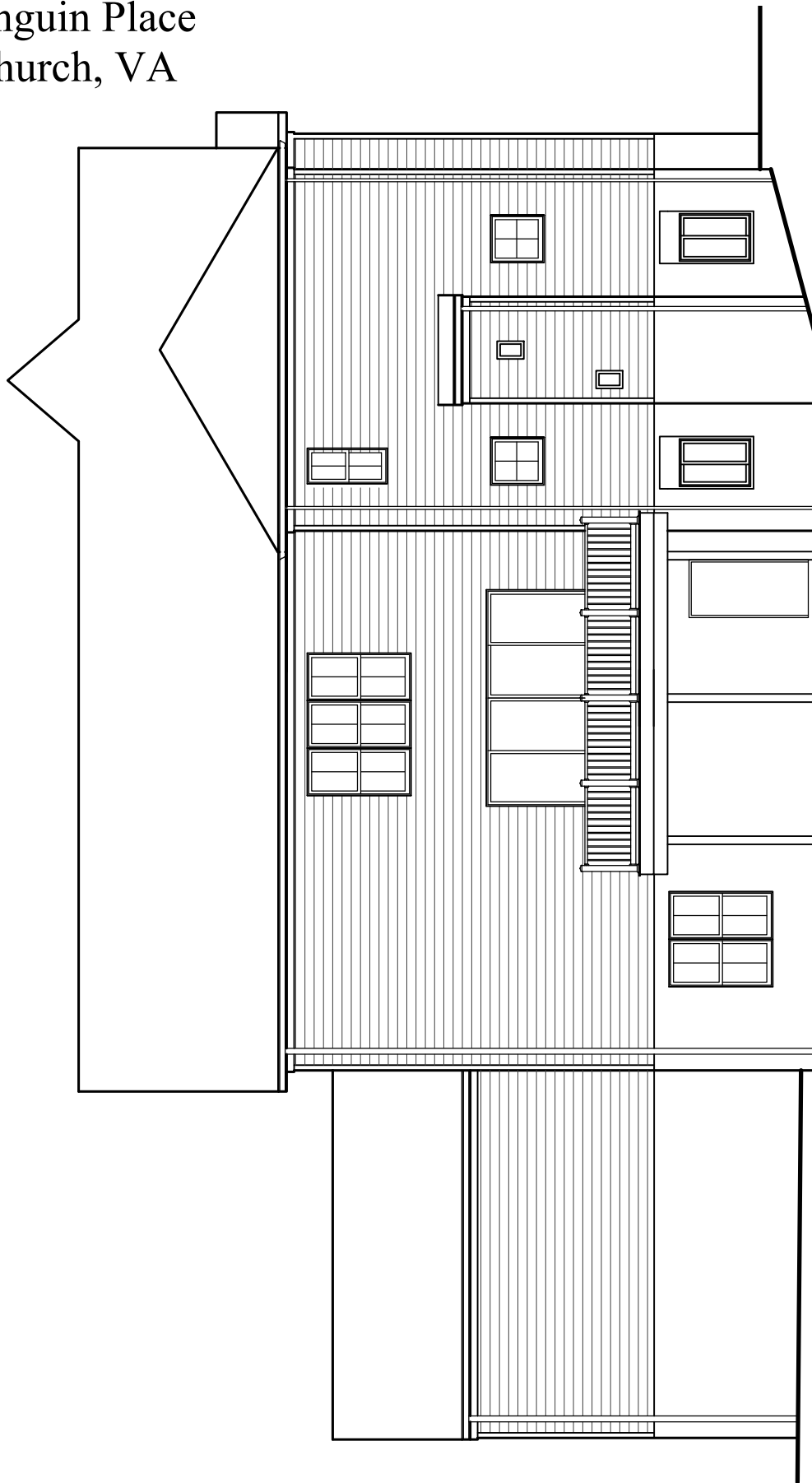
Finished square footage calculations for this house were made based on plan dimensions only and may vary from the finished square footage of the house as built. Areas calculated per the American National Standard For Single-Family Residential Buildings, Approved June 2013: ANSI Z765-2013
Note: Stormwater Planter Design subject to change.



12/01/2025

W
W O R M A L D

7107 Penguin Place
Falls Church, VA



Rear Elevation

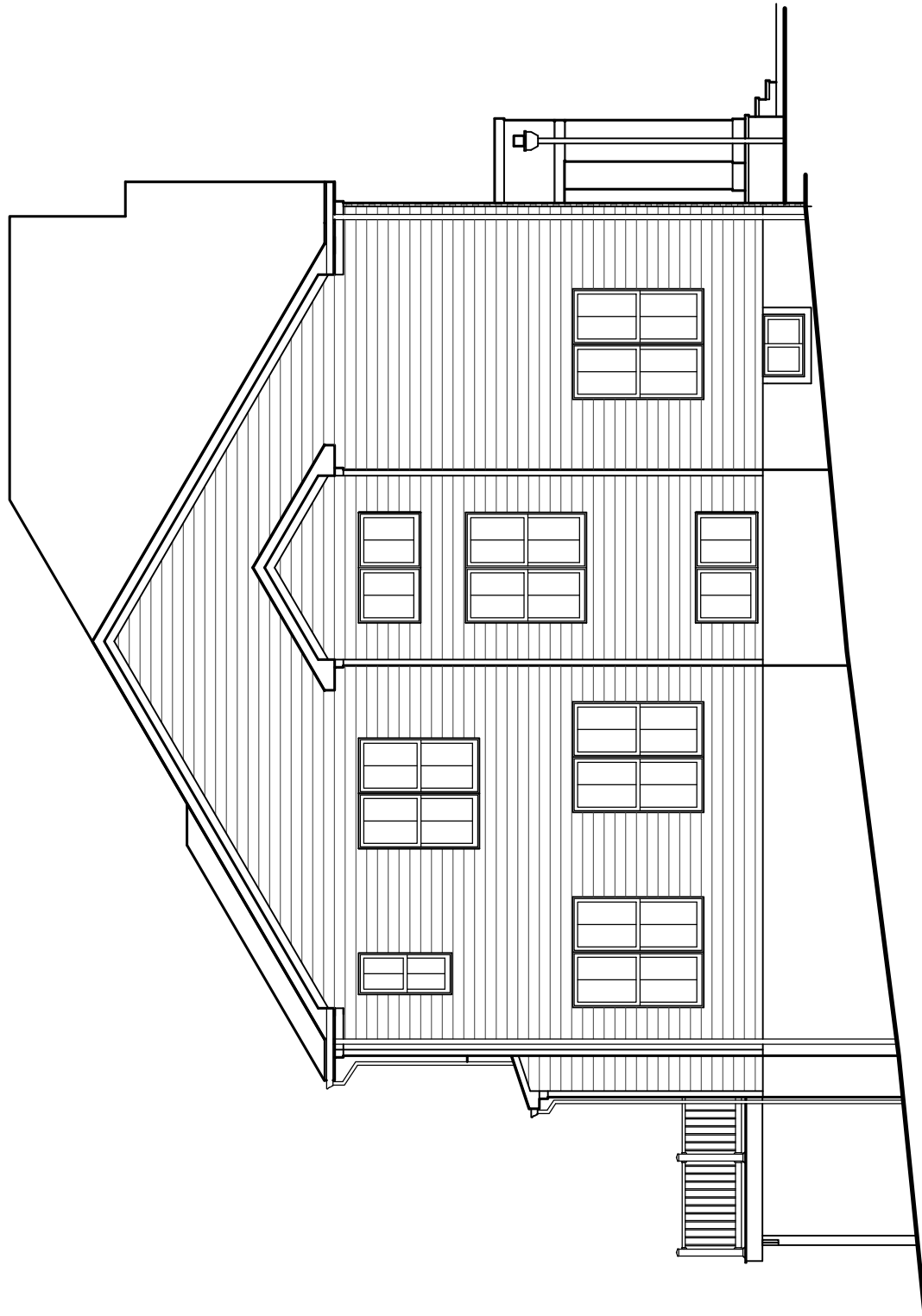
Finished square footage calculations for this house were made based on plan dimensions only and may vary from the finished square footage of the house as built. Areas calculated per the American National Standard For Single-Family Residential Buildings, Approved June 2013: ANSI Z765-2013
Note: Stormwater Planter Design subject to change.



12/01/2025

W
ORMALD

7107 Penguin Place
Falls Church, VA



Left Elevation

Finished square footage calculations for this house were made based on plan dimensions only and may vary from the finished square footage of the house as built. Areas calculated per the American National Standard For Single-Family Residential Buildings, Approved June 2013: ANSI Z765-2013
Note: Stormwater Planter Design subject to change.



12/01/2025

W
ORMALD