

First Floor

Finished Area Above Grade: 2,168 sq. ft.

Screened Porch: 205 sq. ft.

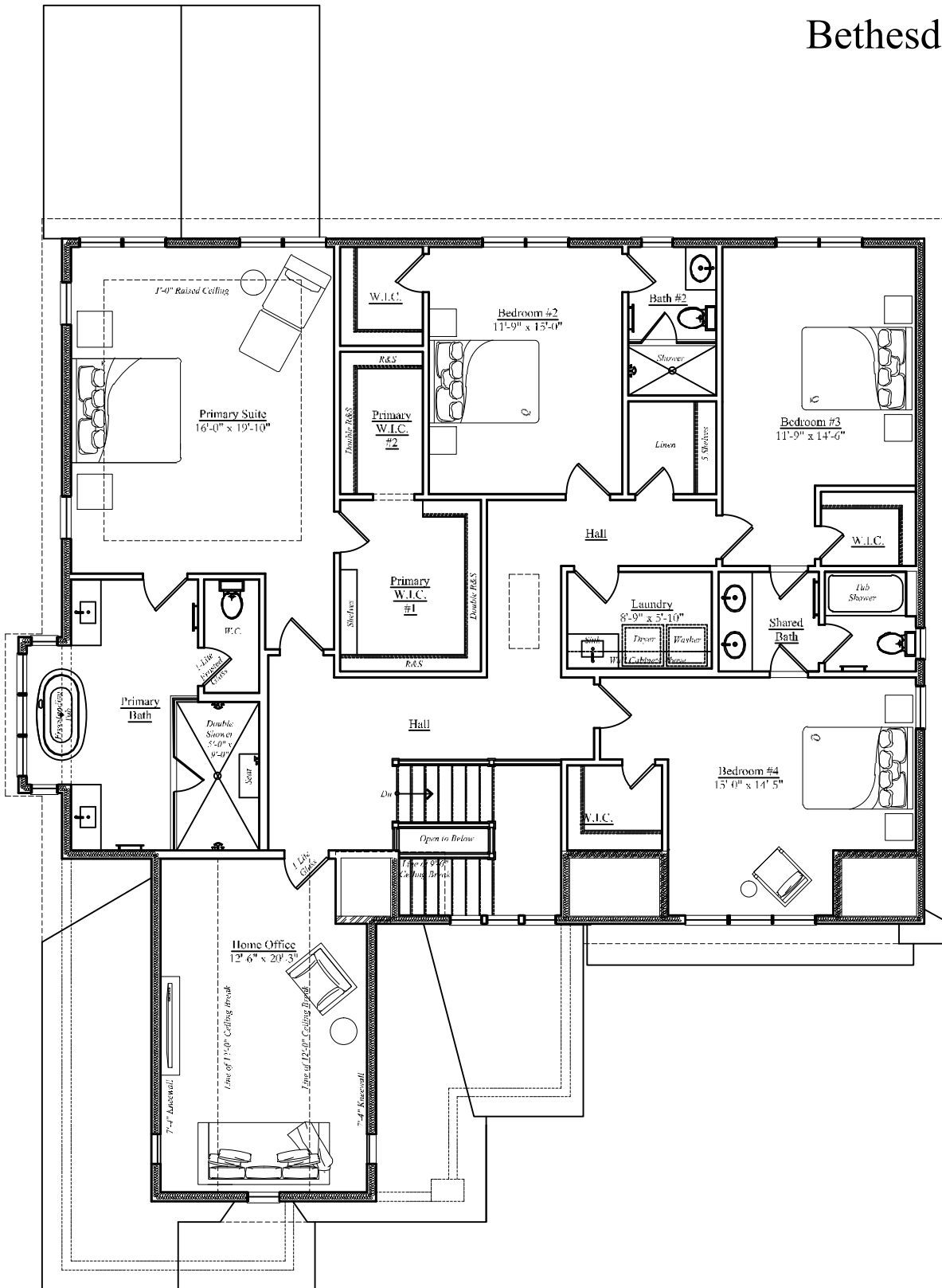
Garage: 442 sq. ft.

Finished square footage calculations for this house were made based on plan dimensions only and may vary from the finished square footage of the house as built. Areas calculated per the American National Standard For Single-Family Residential Buildings, Approved June 2013: ANSI Z765-2013



03/24/2024





Second Floor

Finished Area Above Grade: 2,367 sq.ft.

Finished square footage calculations for this house were made based on plan dimensions only and may vary from the finished square footage of the house as built. Areas calculated per the American National Standard For Single-Family Residential Buildings, Approved June 2013: ANSI Z765-2013



03/24/2024





Basement Level

Finished Area Below Grade: 1,851 sq.ft.

Unfinished Area Below Grade: 325 sq. ft.

Finished square footage calculations for this house were made based on plan dimensions only and may vary from the finished square footage of the house as built. Areas calculated per the American National Standard For Single-Family Residential Buildings, Approved June 2013: ANSI Z765-2013



03/24/2024



6433 Kenhowe Drive
Bethesda, MD



Front Elevation

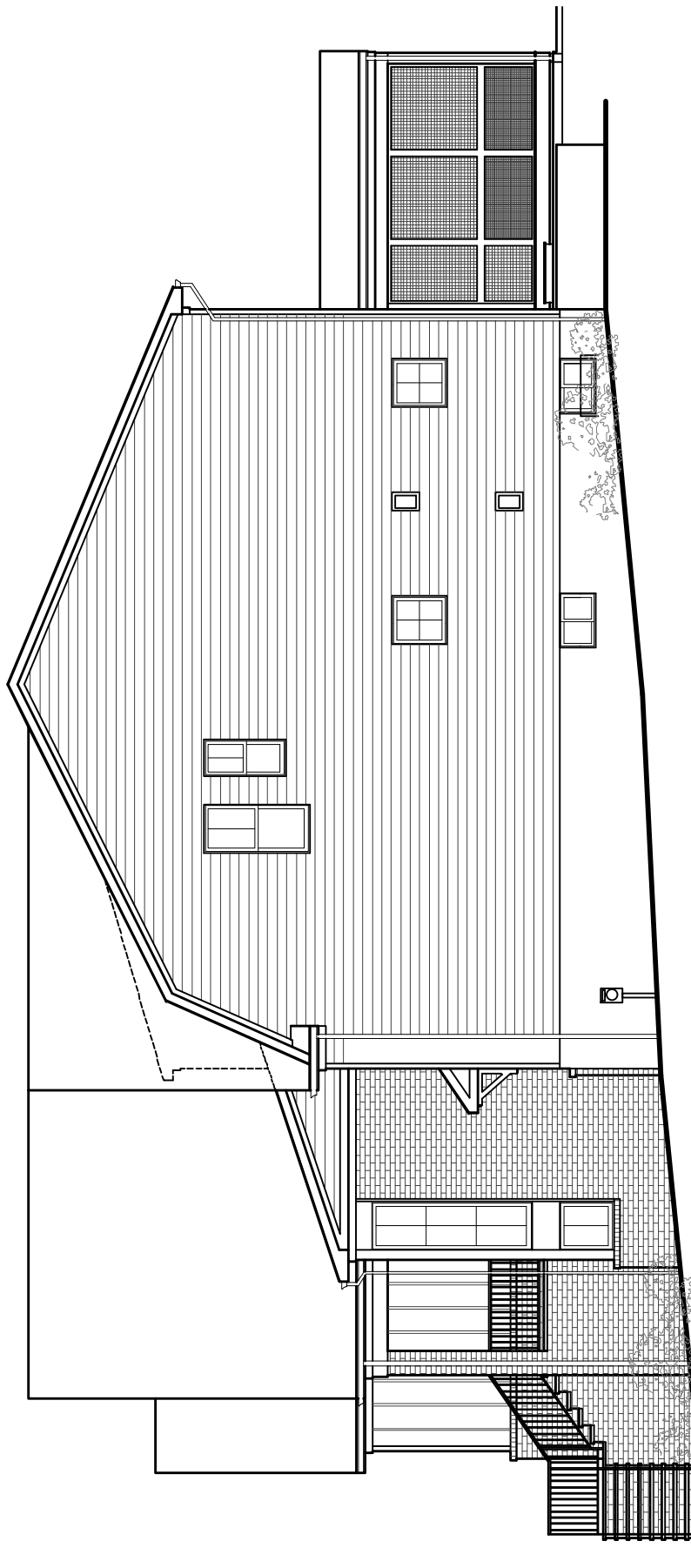
Finished square footage calculations for this house were made based on plan dimensions only and may vary from the finished square footage of the house as built. Areas calculated per the American National Standard For Single-Family Residential Buildings, Approved June 2013: ANSI Z765-2013



03/24/2024



6433 Kenhowe Drive
Bethesda, MD



Right Elevation

Finished square footage calculations for this house were made based on plan dimensions only and may vary from the finished square footage of the house as built. Areas calculated per the American National Standard For Single-Family Residential Buildings, Approved June 2013: ANSI Z765-2013



03/24/2024

W
W O R M A L D

6433 Kenhowe Drive
Bethesda, MD



Rear Elevation

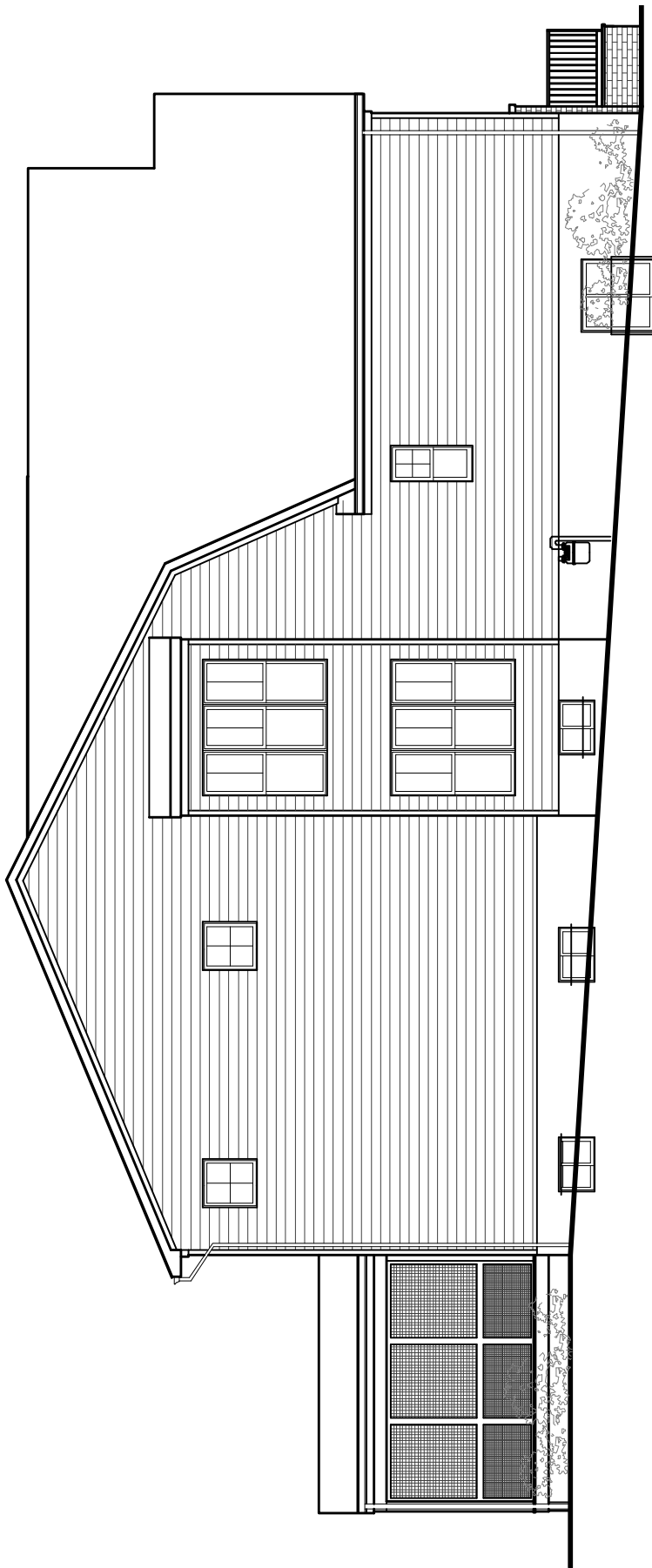
Finished square footage calculations for this house were made based on plan dimensions only and may vary from the finished square footage of the house as built. Areas calculated per the American National Standard For Single-Family Residential Buildings, Approved June 2013: ANSI Z765-2013



03/24/2024



6433 Kenhowe Drive
Bethesda, MD



Left Elevation

Finished square footage calculations for this house were made based on plan dimensions only and may vary from the finished square footage of the house as built. Areas calculated per the American National Standard For Single-Family Residential Buildings, Approved June 2013: ANSI Z765-2013



03/24/2024

W
W O R M A L D