

6226 STONEHAM COURT



FRONT ELEVATION

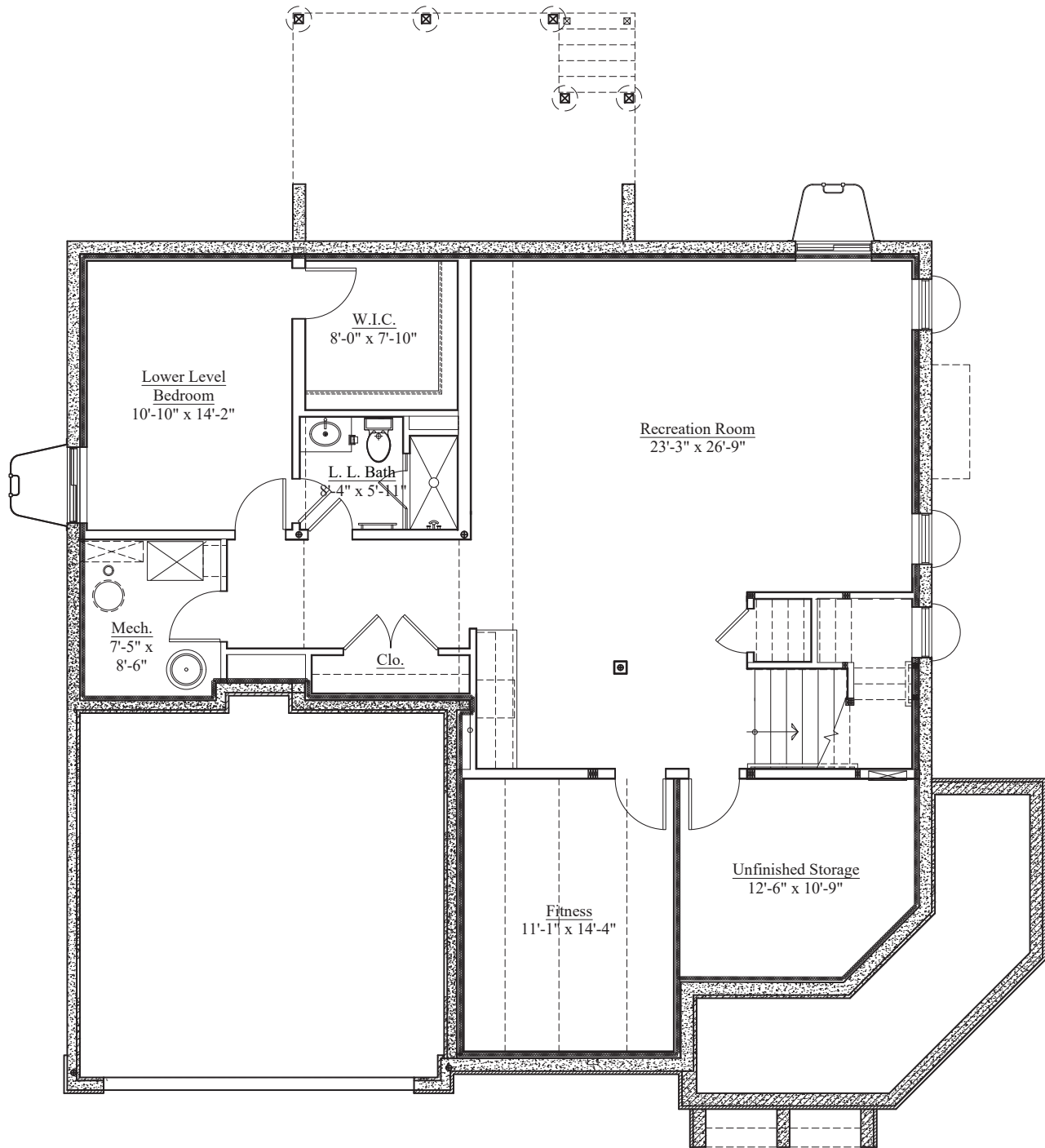


DATE: 8/29/25

Design and details are the exclusive property of Wormald Homes, Inc. Unauthorized use is strictly prohibited. Actual product and specifications may vary in dimension or detail from these drawings and are subject to change without notice. Window and door locations vary per elevation. MHBR No. 3514
Finished square footage calculations for this house were made based on plan dimensions only and may vary from the finished square footage of the house as built.
Areas calculated per the American National Standard For Single-Family Residential Buildings, Approved June 2013: ANSI Z765-2013

W
W O R M A L D

6226 STONEHAM COURT



FINISHED - 1,339 SF
UNFINISHED - 219 SF

LOWER LEVEL FLOOR PLAN

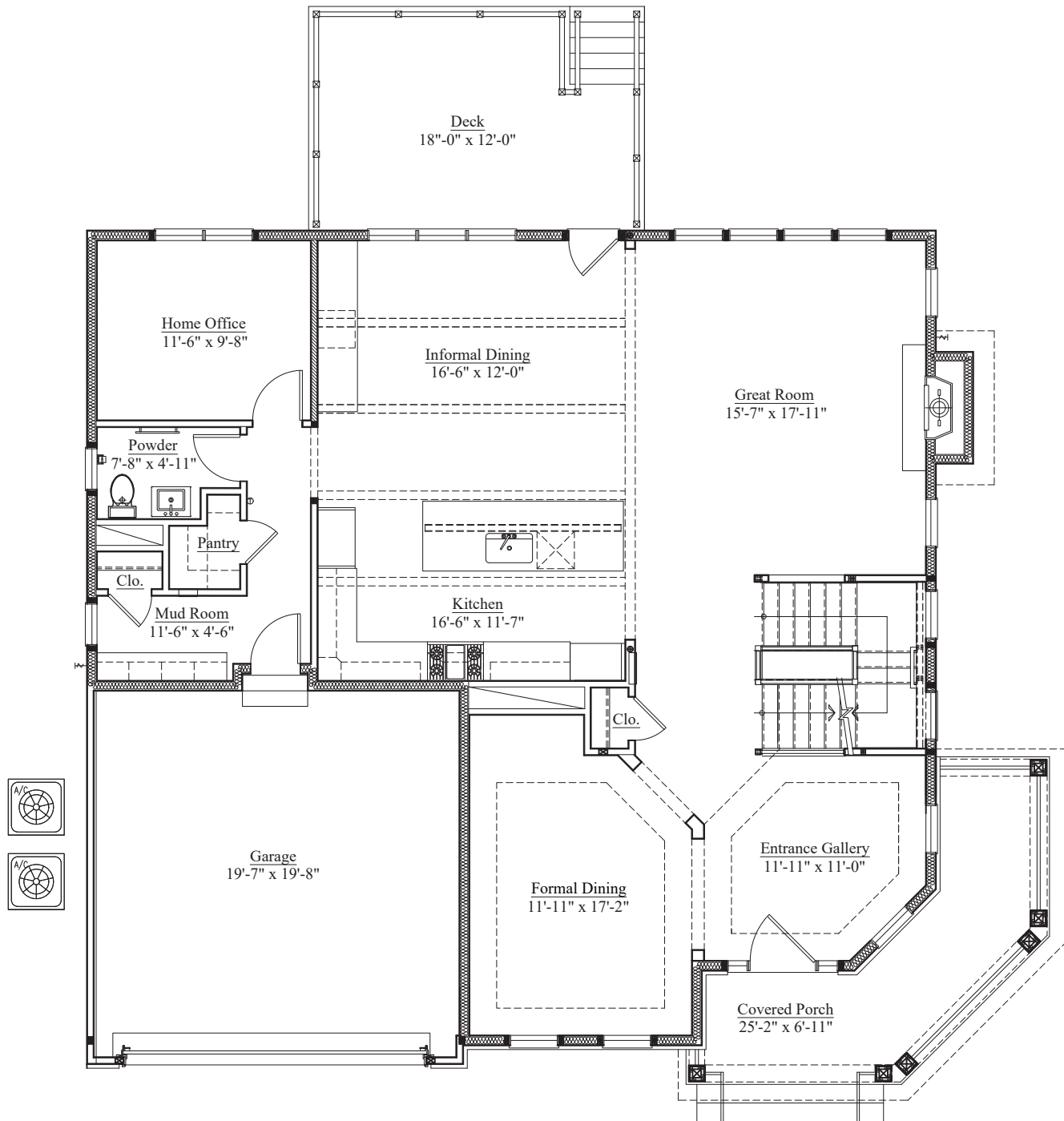


DATE: 8/29/25

Design and details are the exclusive property of Wormald Homes, Inc. Unauthorized use is strictly prohibited. Actual product and specifications may vary in dimension or detail from these drawings and are subject to change without notice. Window and door locations vary per elevation. MHBR No. 3514
Finished square footage calculations for this house were made based on plan dimensions only and may vary from the finished square footage of the house as built.
Areas calculated per the American National Standard For Single-Family Residential Buildings, Approved June 2013: ANSI Z765-2013

W
WORMALD

6226 STONEHAM COURT



FINISHED - 1,548 SF
UNFINISHED - 400 SF
PORCH - 158 SF
DECK - 216 SF

MAIN LEVEL FLOOR PLAN

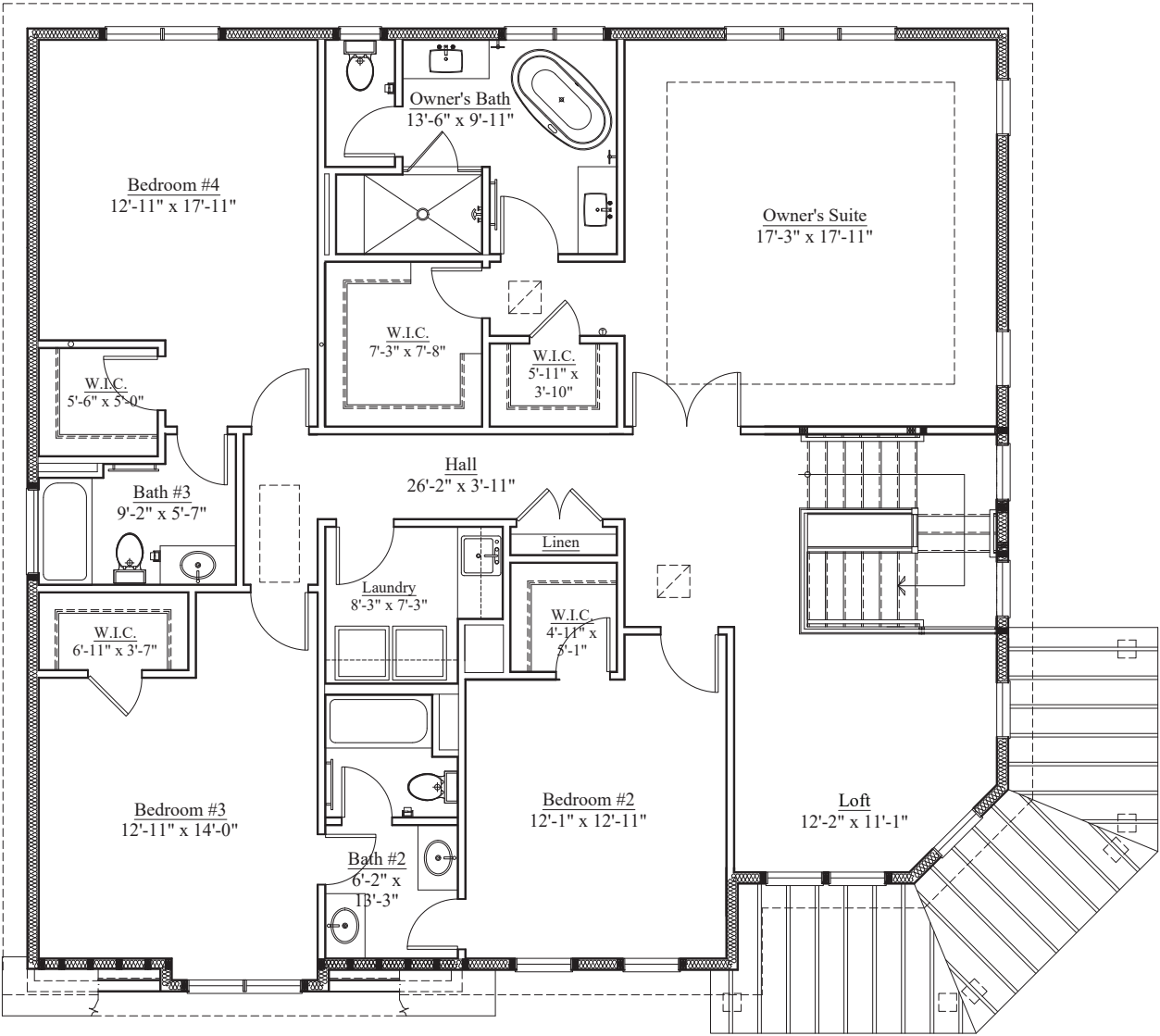


DATE: 8/29/25

Design and details are the exclusive property of Wormald Homes, Inc. Unauthorized use is strictly prohibited. Actual product and specifications may vary in dimension or detail from these drawings and are subject to change without notice. Window and door locations vary per elevation. MHBR No. 3514
Finished square footage calculations for this house were made based on plan dimensions only and may vary from the finished square footage of the house as built.
Areas calculated per the American National Standard For Single-Family Residential Buildings, Approved June 2013: ANSI Z765-2013

W
WORMALD

6226 STONEHAM COURT



FINISHED - 1,928 SF

UPPER LEVEL FLOOR PLAN



DATE: 8/29/25

Design and details are the exclusive property of Wormald Homes, Inc. Unauthorized use is strictly prohibited. Actual product and specifications may vary in dimension or detail from these drawings and are subject to change without notice. Window and door locations vary per elevation. MHBR No. 3514
Finished square footage calculations for this house were made based on plan dimensions only and may vary from the finished square footage of the house as built.
Areas calculated per the American National Standard For Single-Family Residential Buildings, Approved June 2013: ANSI Z765-2013

W
WORMALD