

6109 WILMETT ROAD
A SIGNATURE PROPERTY
BY

W

W O R M A L D



FRONT ELEVATION

DESIGN BY:

W

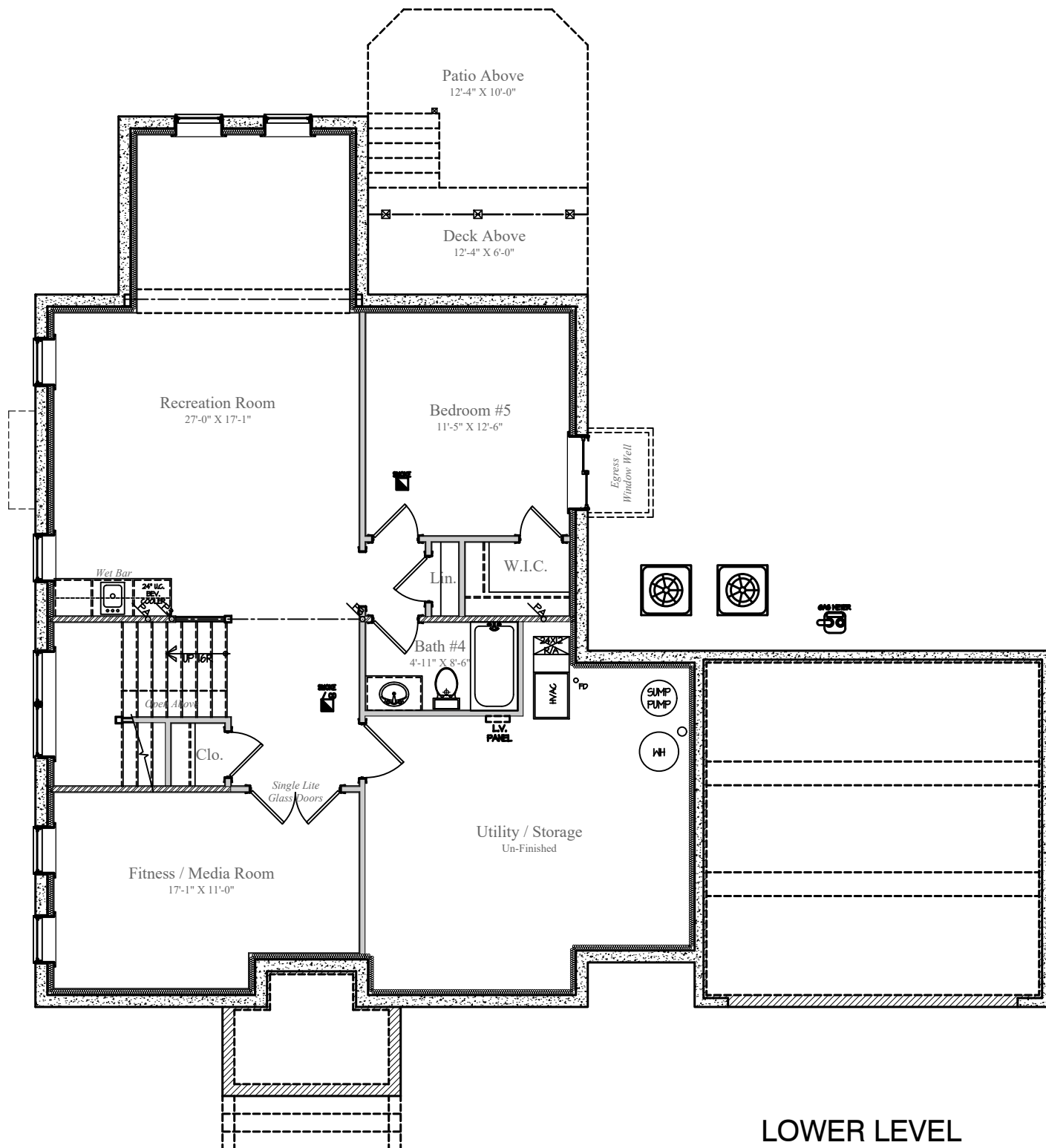
W O R M A L D



8/4/2023

Design and details are the exclusive property of Wormald Homes, Inc. Unauthorized use is strictly prohibited. Actual product and specifications may vary in dimension or detail from these drawings and are subject to change without notice. Window and door locations vary per elevation. MHBR No. 3514

6109 WILMETT ROAD



LOWER LEVEL
FINISHED AREA: 1,145 sq.ft.
UN-FINISHED: 342 sq. ft.
DIMENSIONS MAY VARY

DESIGN BY:



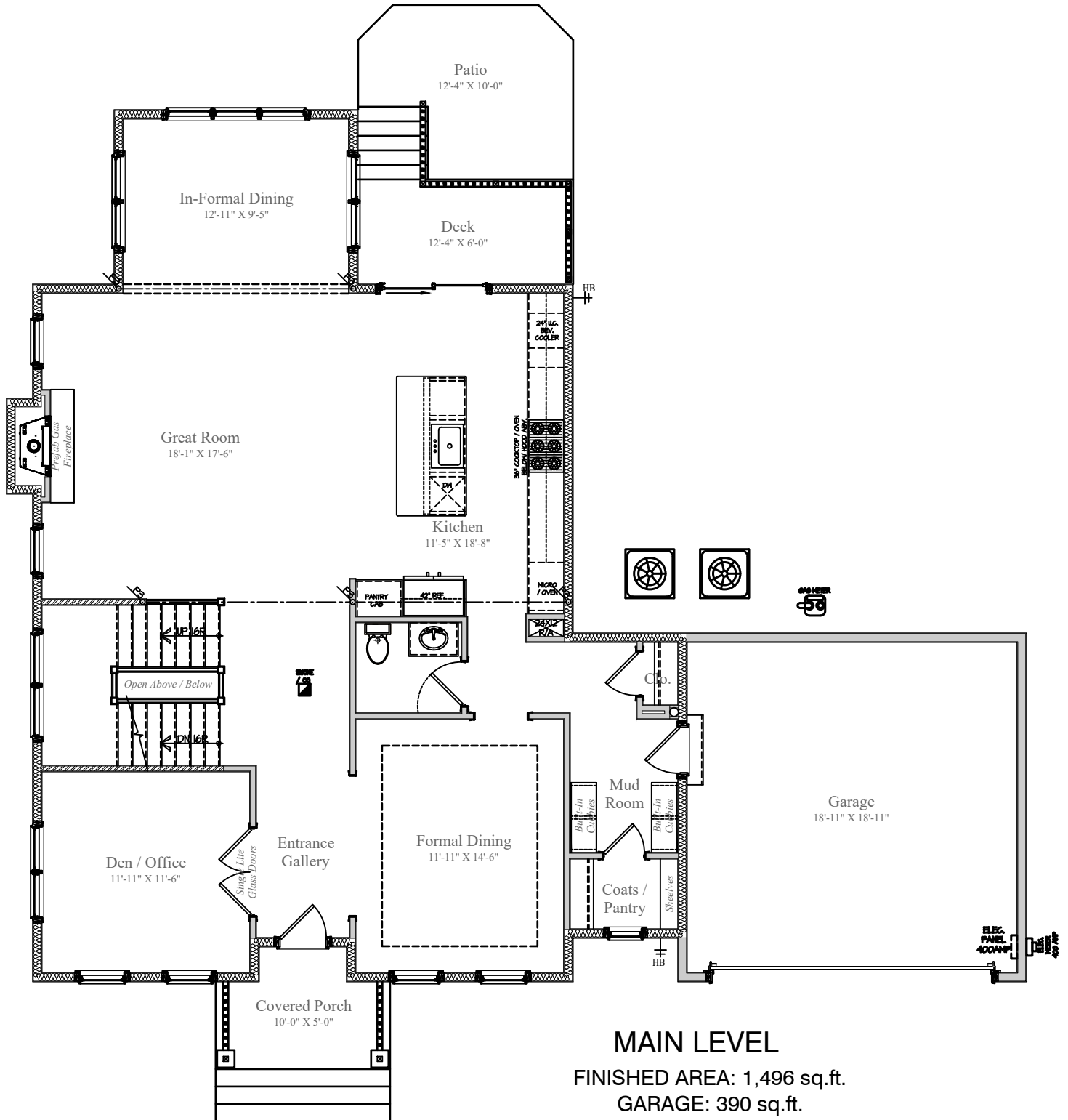
WORMALD



8/4/2023

Design and details are the exclusive property of Wormald Homes, Inc. Unauthorized use is strictly prohibited. Actual product and specifications may vary in dimension or detail from these drawings and are subject to change without notice. Window and door locations vary per elevation. MHBR No. 3514

6109 WILMETT ROAD



MAIN LEVEL

FINISHED AREA: 1,496 sq.ft.
 GARAGE: 390 sq.ft.
 DECK: 74 sq.ft. PATIO: 123 sq.ft.
 COVERED PORCH: 60 sq.ft.
 DIMENSIONS MAY VARY

DESIGN BY:

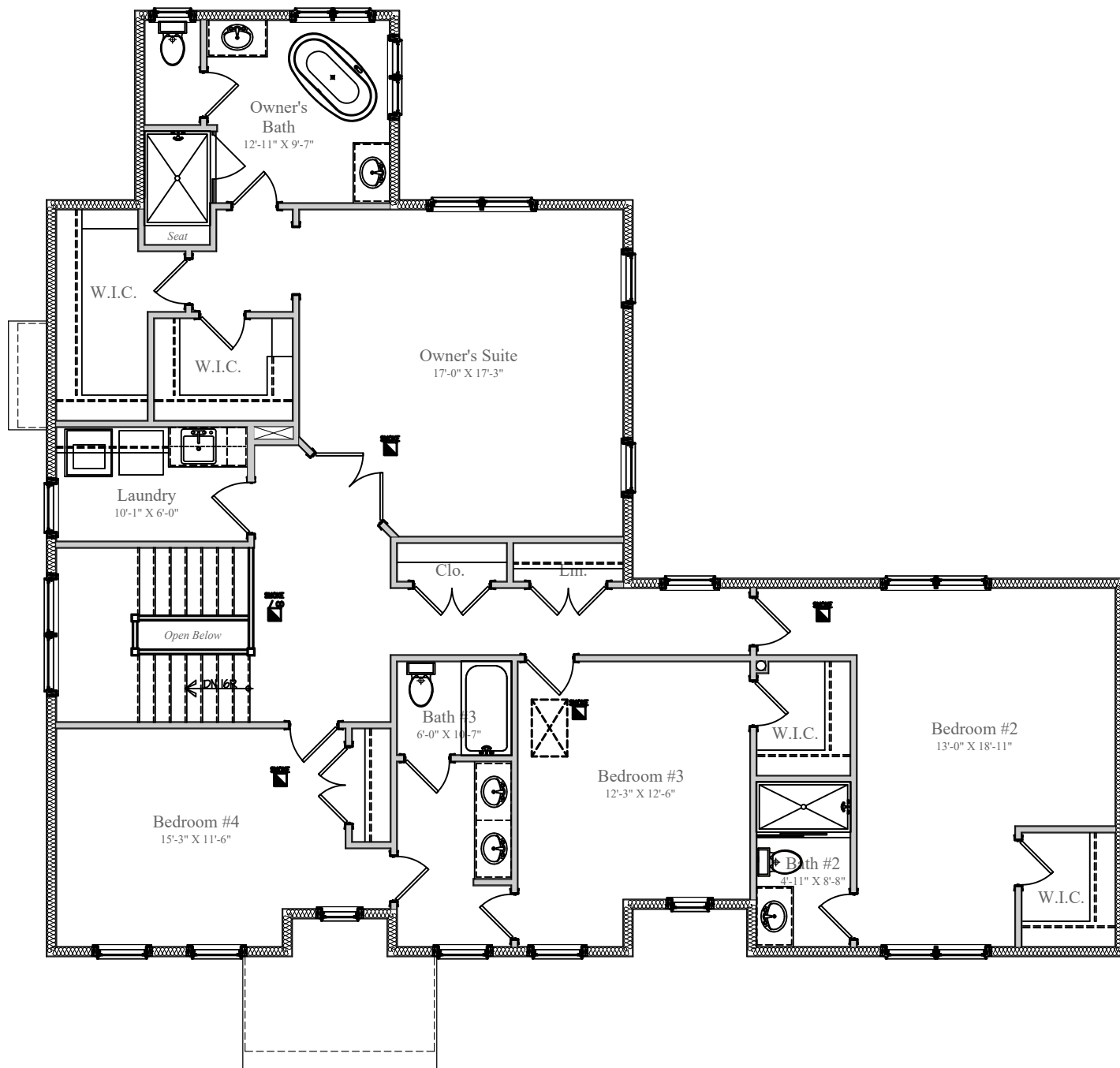


8/4/2023

Design and details are the exclusive property of Wormald Homes, Inc. Unauthorized use is strictly prohibited. Actual product and specifications may vary in dimension or detail from these drawings and are subject to change without notice. Window and door locations vary per elevation. MHBR No. 3514



6109 WILMETT ROAD



UPPER LEVEL
FINISHED AREA: 1,777 sq. ft.
DIMENSIONS MAY VARY

DESIGN BY:

W

WORMALD



8/4/2023

Design and details are the exclusive property of Wormald Homes, Inc. Unauthorized use is strictly prohibited. Actual product and specifications may vary in dimension or detail from these drawings and are subject to change without notice. Window and door locations vary per elevation. MHBR No. 3514