

6038 NORTH 21ST STREET
A SIGNATURE PROPERTY

BY

W

W O R M A L D



FRONT ELEVATION

DESIGN BY:

W

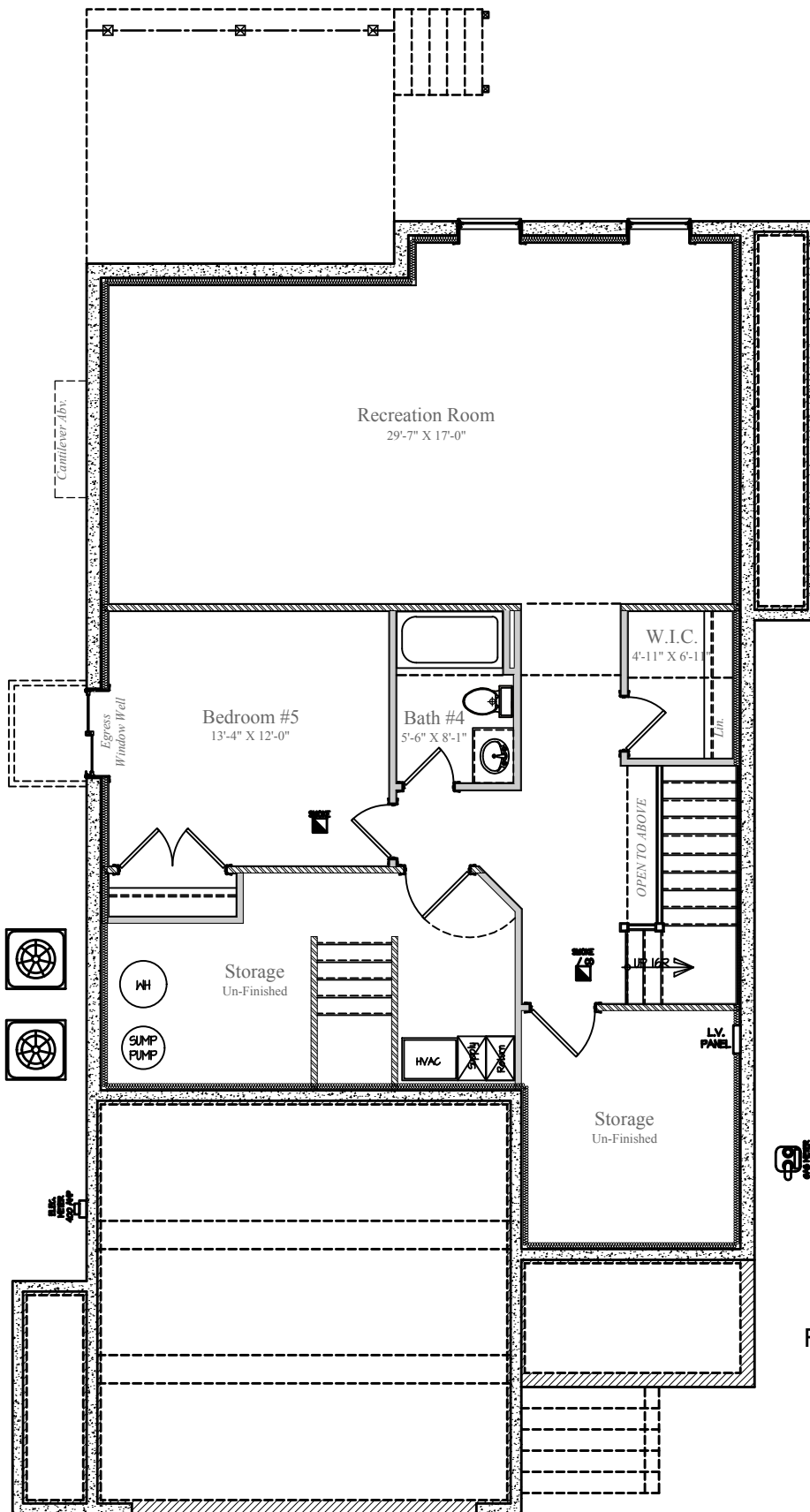
W O R M A L D



2/26/2023

Design and details are the exclusive property of Wormald Homes, Inc. Unauthorized use is strictly prohibited. Actual product and specifications may vary in dimension or detail from these drawings and are subject to change without notice. Window and door locations vary per elevation. MHBR No. 3514

6038 NORTH 21ST STREET



LOWER LEVEL
FINISHED AREA: 1,032 sq.ft.
UN-FINISHED: 332 sq. ft.
DIMENSIONS MAY VARY

DESIGN BY:

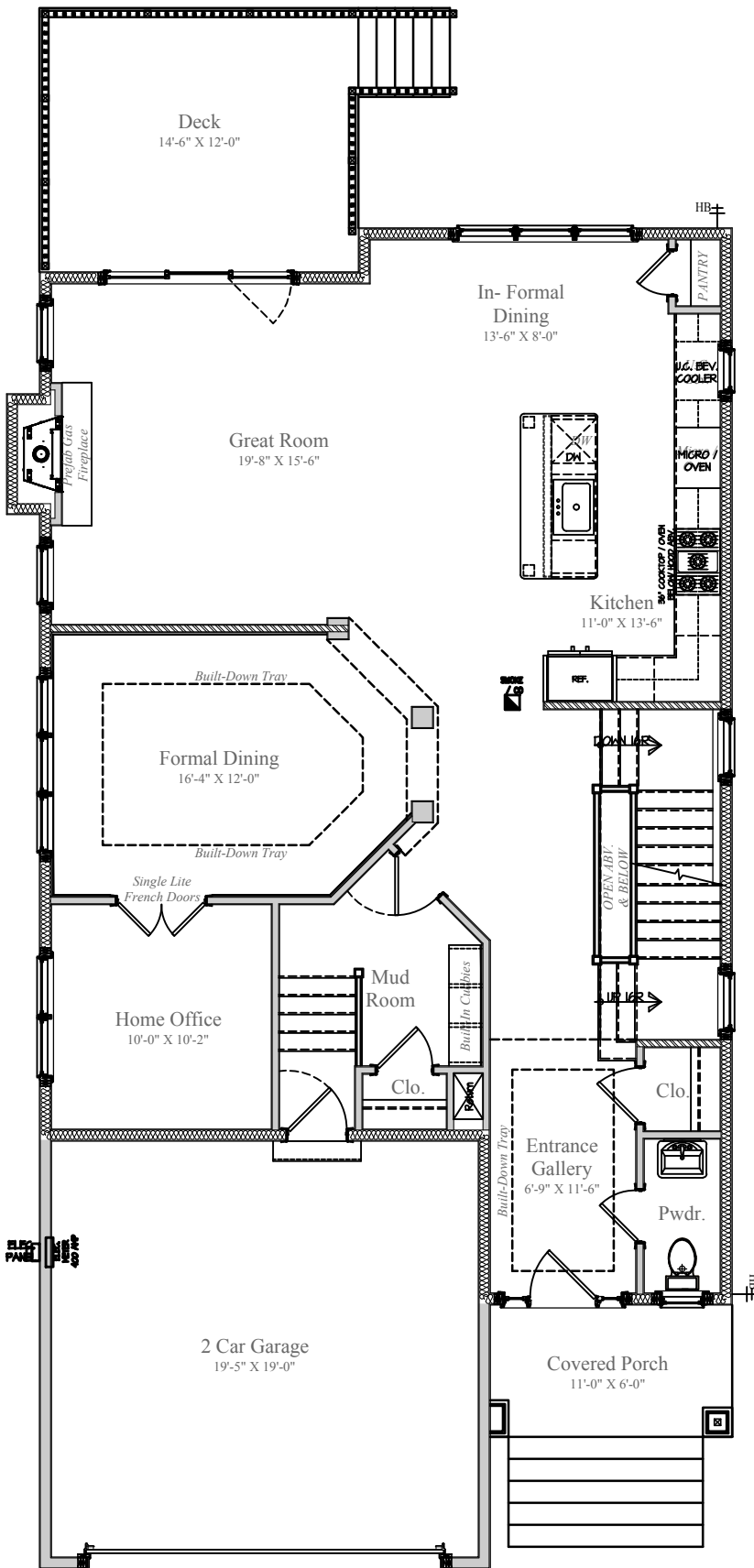


2/26/2023

Design and details are the exclusive property of Wormald Homes, Inc. Unauthorized use is strictly prohibited. Actual product and specifications may vary in dimension or detail from these drawings and are subject to change without notice. Window and door locations vary per elevation. MHBR No. 3514

W
WORMALD

6038 NORTH 21ST STREET



MAIN LEVEL
 FINISHED AREA: 1,374 sq.ft.
 GARAGE: 395 sq. ft.
 DECK: 174 sq. ft.
 COVERED PORCH: 66 sq. ft.
 DIMENSIONS MAY VARY

DESIGN BY:



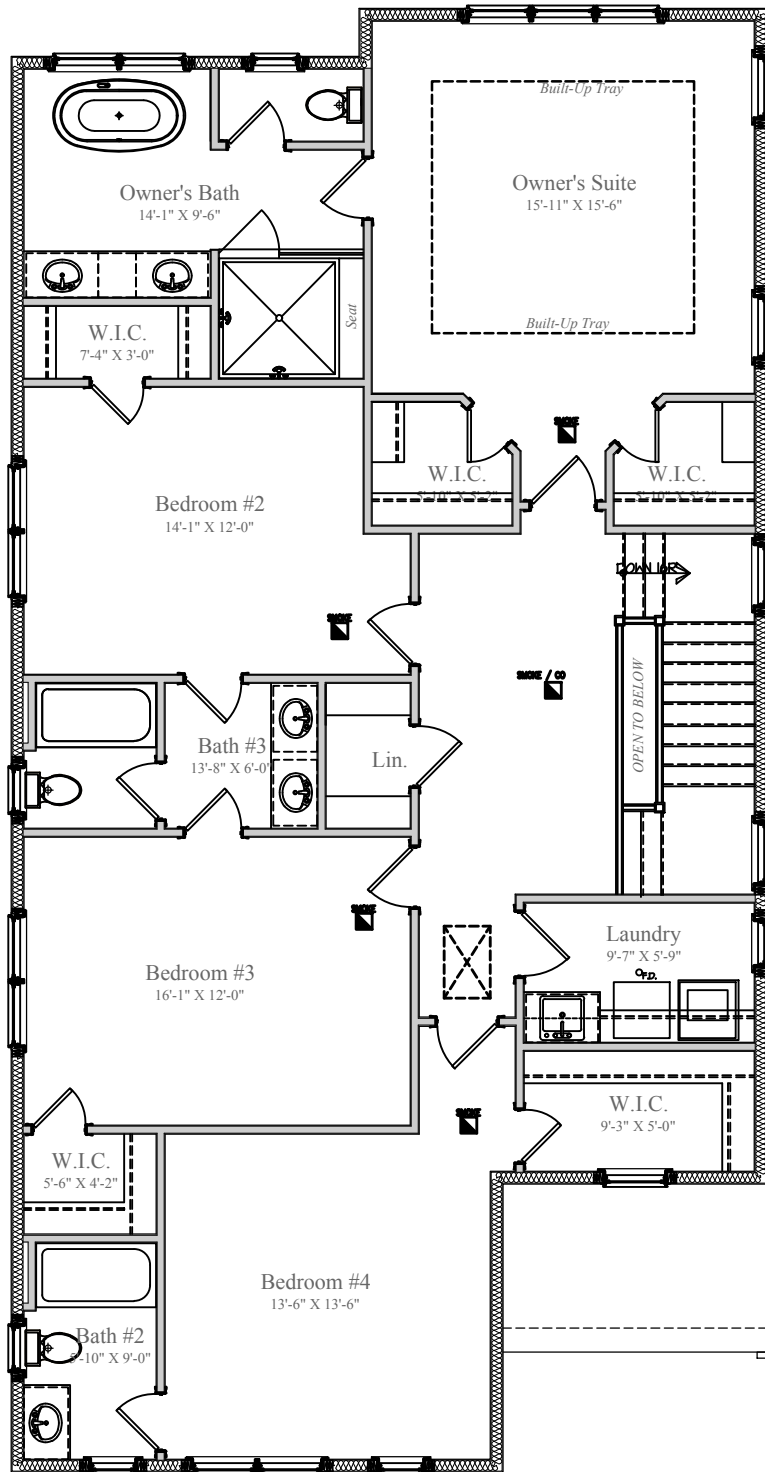
WORMALD



2/26/2023

Design and details are the exclusive property of Wormald Homes, Inc. Unauthorized use is strictly prohibited. Actual product and specifications may vary in dimension or detail from these drawings and are subject to change without notice. Window and door locations vary per elevation. MHBR No. 3514

6038 NORTH 21ST STREET



UPPER LEVEL
FINISHED AREA: 1,670 sq. ft.
DIMENSIONS MAY VARY



2/26/2023

Design and details are the exclusive property of Wormald Homes, Inc. Unauthorized use is strictly prohibited. Actual product and specifications may vary in dimension or detail from these drawings and are subject to change without notice. Window and door locations vary per elevation. MHBR No. 3514

DESIGN BY:
W
W O R M A L D