

6003 SONOMA ROAD  
A SIGNATURE PROPERTY  
BY

**W**  
**W O R M A L D**



FRONT ELEVATION

DESIGN BY:

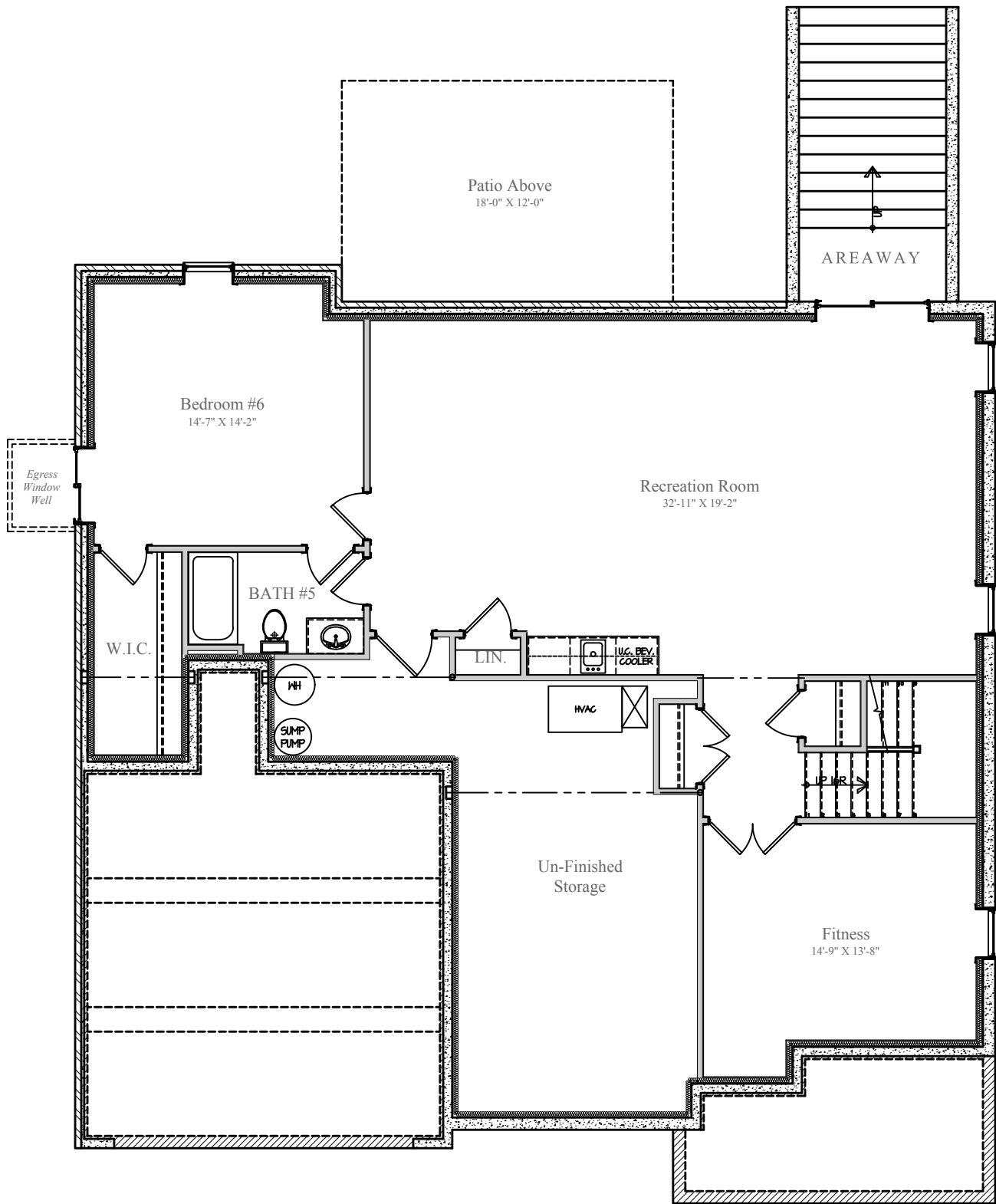


8/18/2019

Design and details are the exclusive property of Wormald Homes, Inc. Unauthorized use is strictly prohibited. Actual product and specifications may vary in dimension or detail from these drawings and are subject to change without notice. Window and door locations vary per elevation. MHBR No. 3514

**W**  
**W O R M A L D**

# 6003 SONOMA ROAD



**LOWER LEVEL**  
FINISHED AREA: 1,425 sq. ft.  
UN-FINISHED: 393 sq. ft.  
DIMENSIONS MAY VARY

DESIGN BY:

**W**

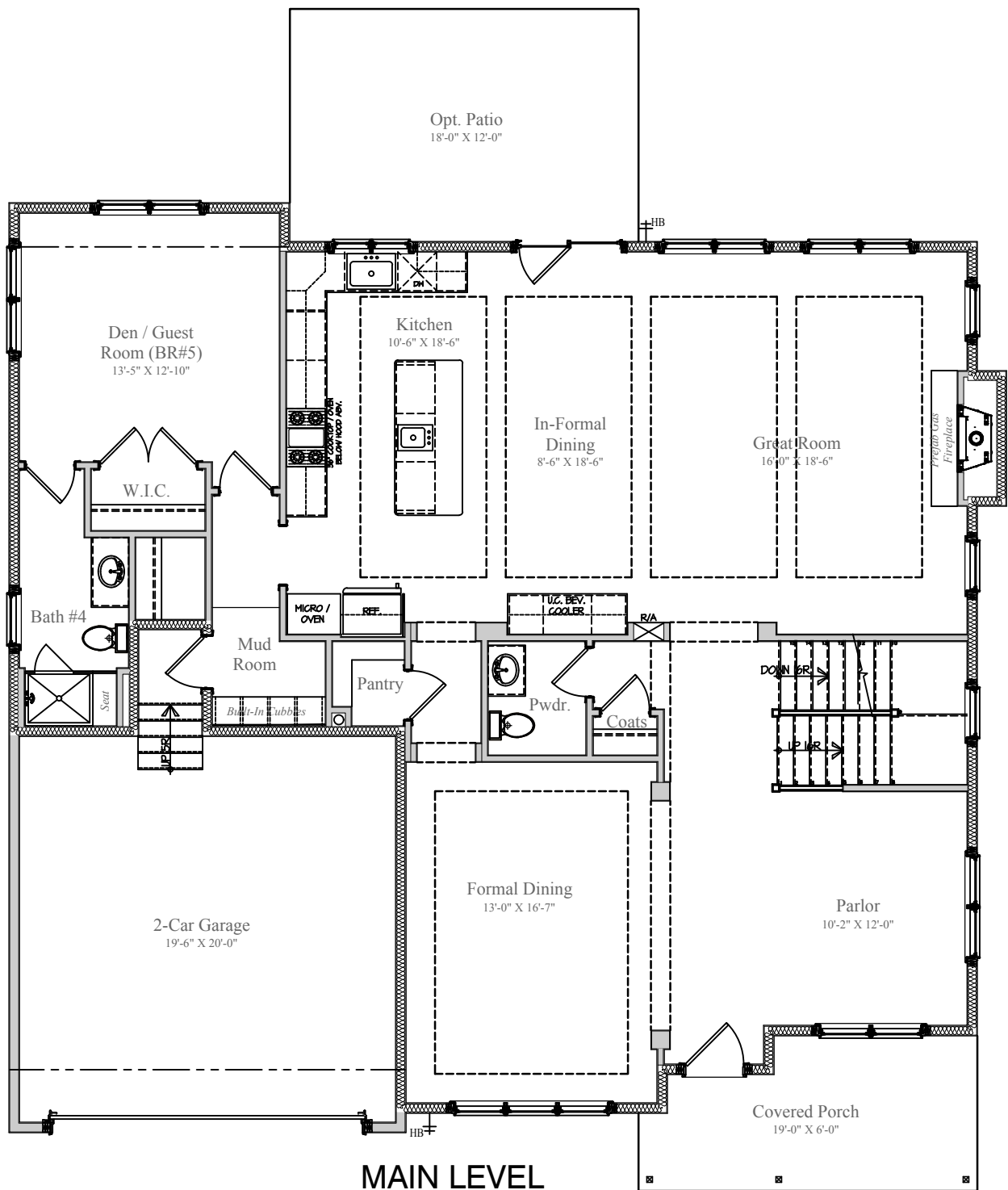
**WORMALD**



8/18/2019

Design and details are the exclusive property of Wormald Homes, Inc. Unauthorized use is strictly prohibited. Actual product and specifications may vary in dimension or detail from these drawings and are subject to change without notice. Window and door locations vary per elevation. MHBR No. 3514

# 6003 SONOMA ROAD



## MAIN LEVEL

FINISHED AREA: 1,818 sq.ft.  
 GARAGE: 429 sq.ft.  
 COVERED PORCH: 123 sq.ft.  
 PATIO: 216 sq.ft.  
 DIMENSIONS MAY VARY

DESIGN BY:



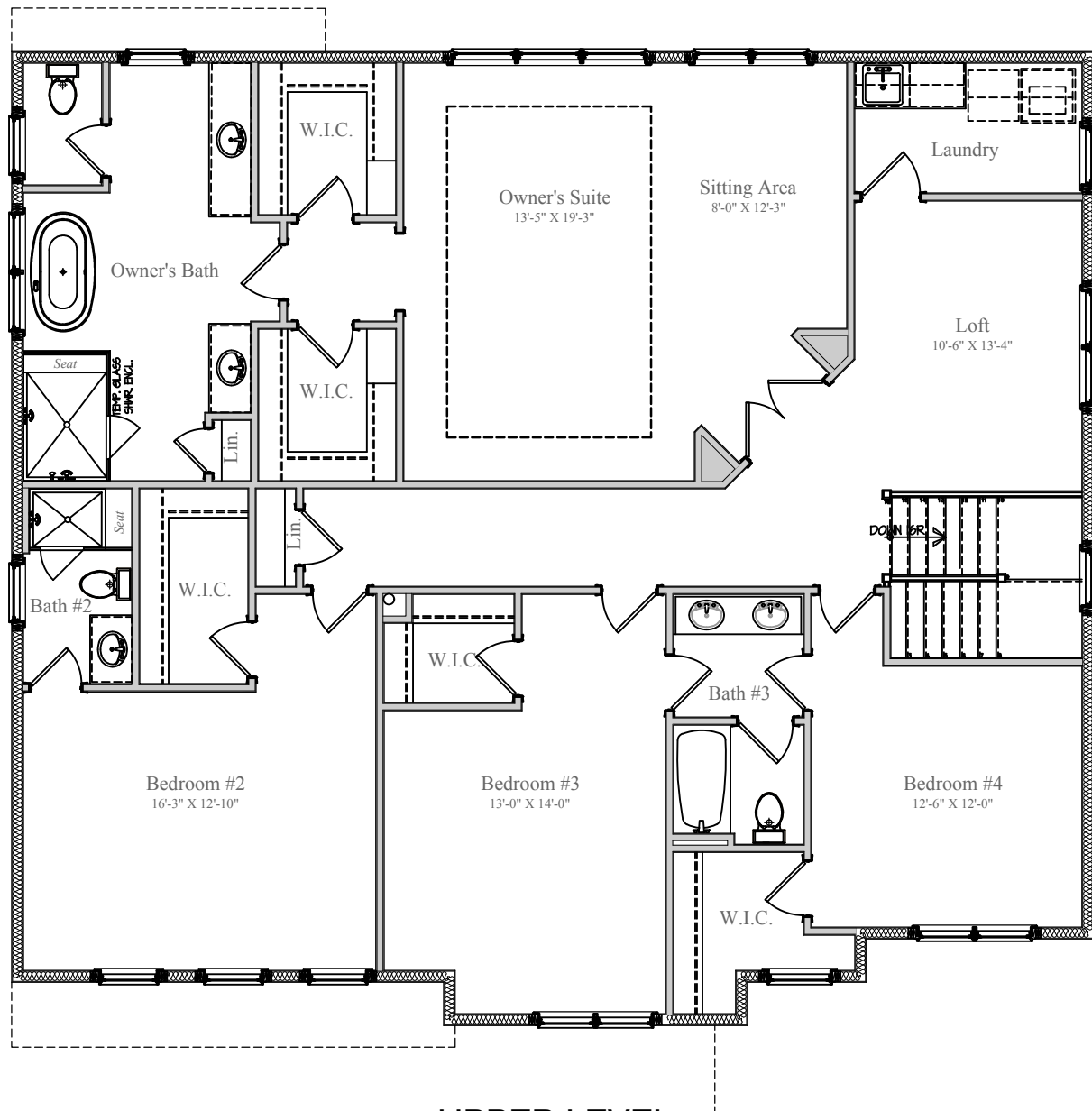
**WORMALD**



8/18/2019

Design and details are the exclusive property of Wormald Homes, Inc. Unauthorized use is strictly prohibited. Actual product and specifications may vary in dimension or detail from these drawings and are subject to change without notice. Window and door locations vary per elevation. MHR No. 3514

# 6003 SONOMA ROAD



## UPPER LEVEL

FINISHED AREA: 2,084 sq. ft.  
DIMENSIONS MAY VARY

DESIGN BY:



8/18/2019

Design and details are the exclusive property of Wormald Homes, Inc. Unauthorized use is strictly prohibited. Actual product and specifications may vary in dimension or detail from these drawings and are subject to change without notice. Window and door locations vary per elevation. MHBR No. 3514

**W**  
**WORMALD**