

5901 KINGSWOOD ROAD
A SIGNATURE PROPERTY
BY

W
W O R M A L D



FRONT ELEVATION

DESIGN BY:

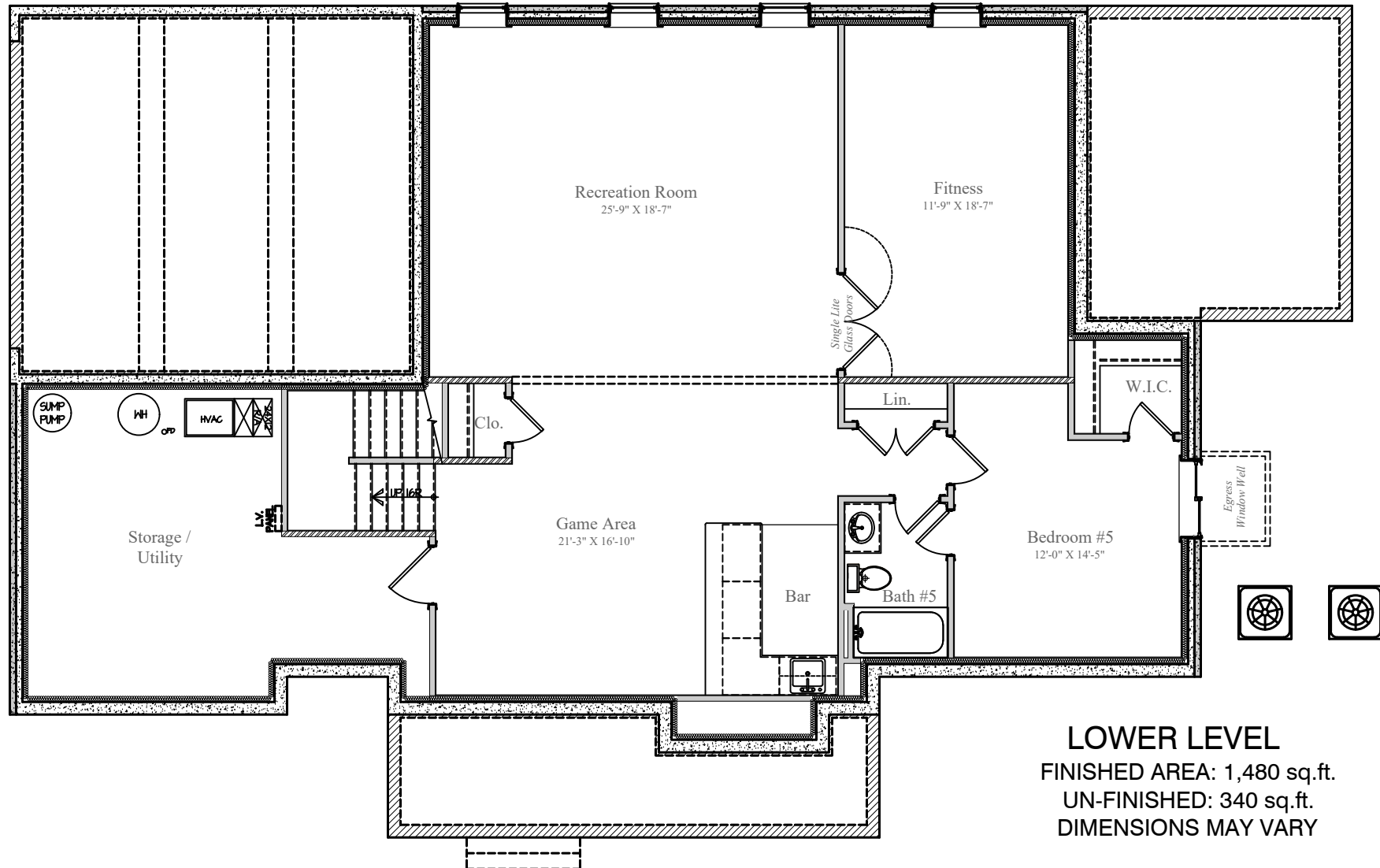
W
W O R M A L D



5/4/2025

Design and details are the exclusive property of Wormald Homes, Inc. Unauthorized use is strictly prohibited. Actual product and specifications may vary in dimension or detail from these drawings and are subject to change without notice. Window and door locations vary per elevation. MHBR No. 3514

5901 KINGSWOOD ROAD



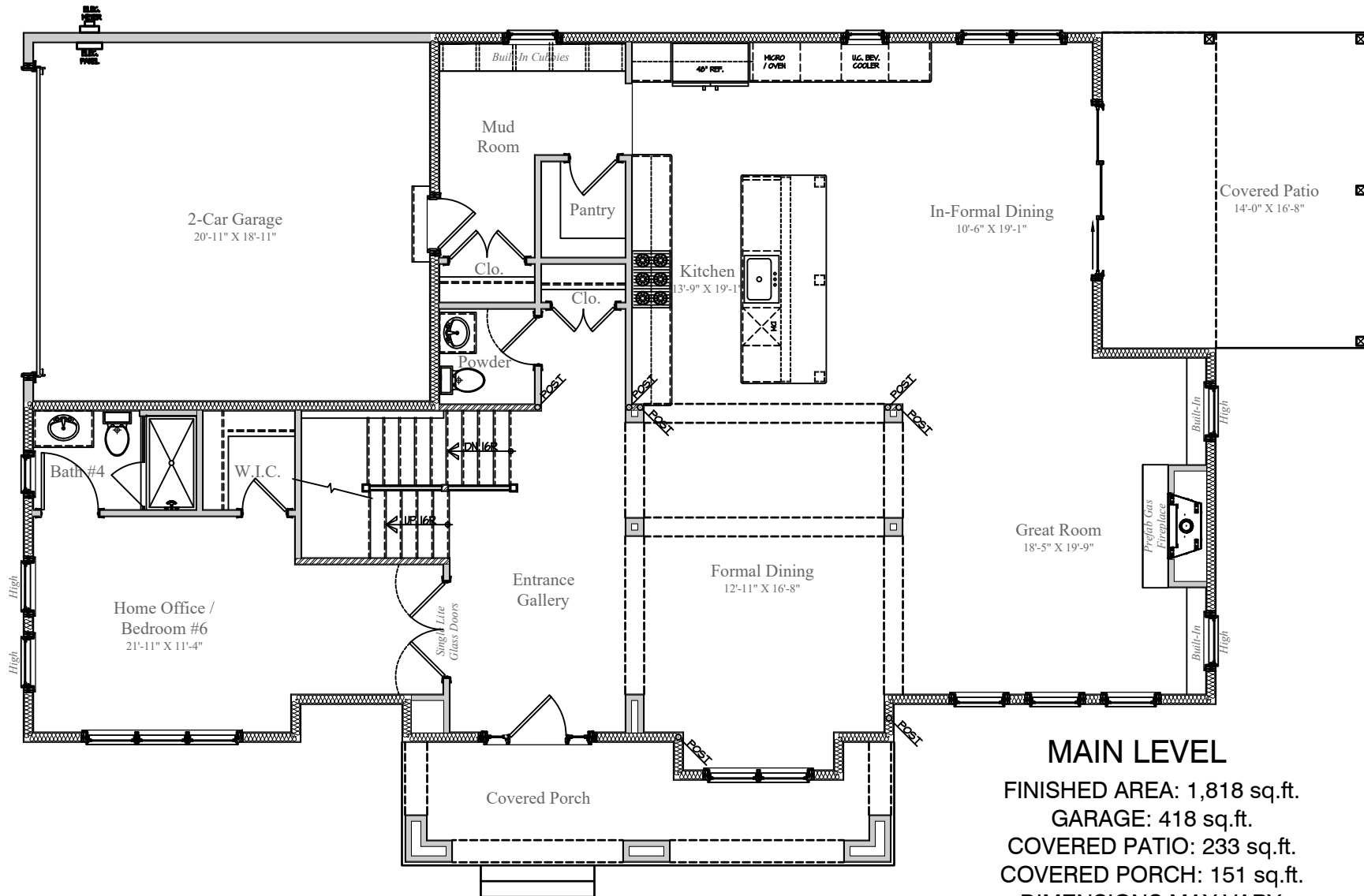
5/4/2025

Design and details are the exclusive property of Wornald Homes, Inc. Unauthorized use is strictly prohibited. Actual product and specifications may vary in dimension or detail from these drawings and are subject to change without notice. Window and door locations vary per elevation. MHBR No. 3514

DESIGN BY:

W
WORNALD

5901 KINGSWOOD ROAD



MAIN LEVEL

FINISHED AREA: 1,818 sq.ft.
GARAGE: 418 sq.ft.
COVERED PATIO: 233 sq.ft.
COVERED PORCH: 151 sq.ft.
DIMENSIONS MAY VARY

DESIGN BY:

W

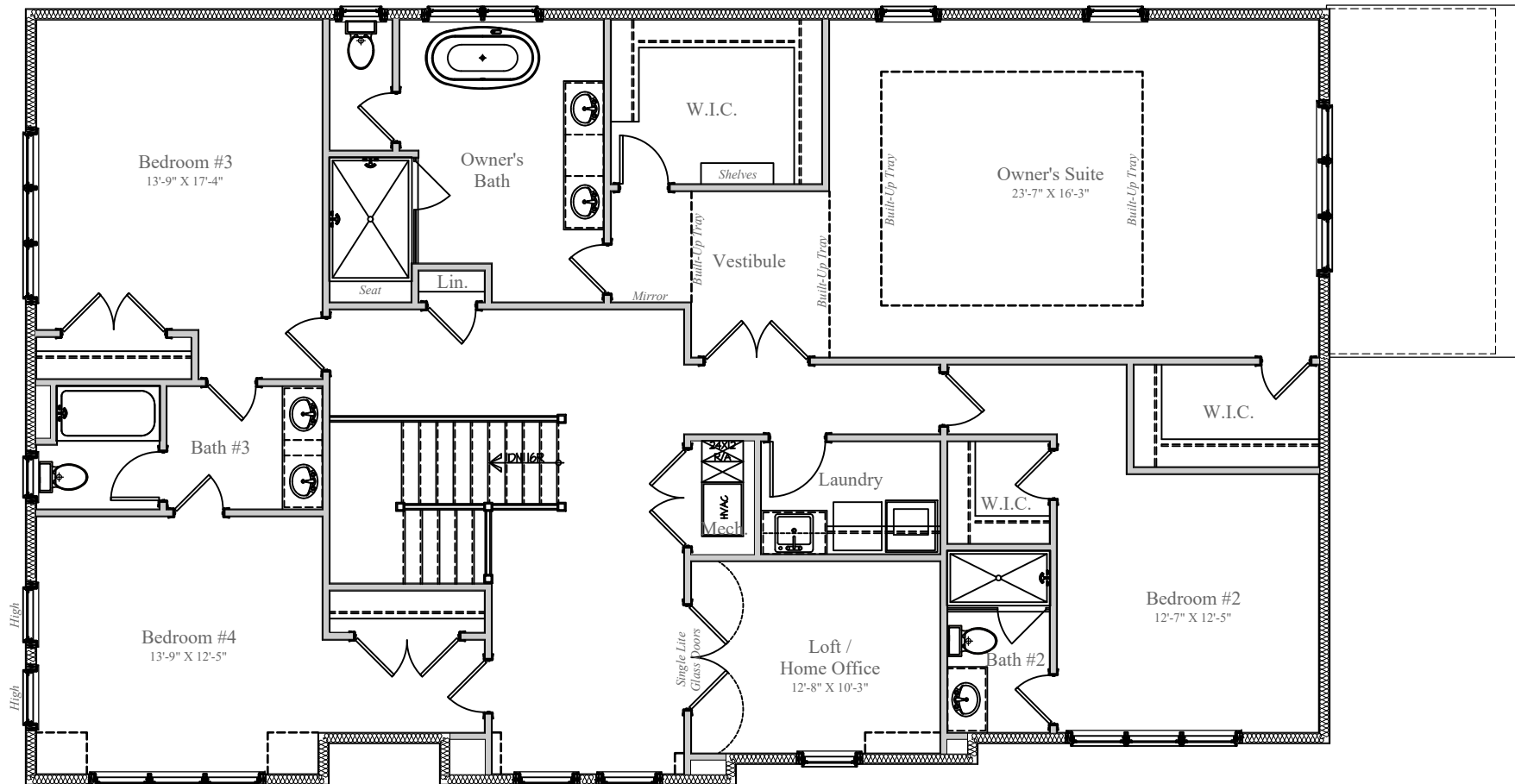
WORMALD



5/4/2025

Design and details are the exclusive property of Wormald Homes, Inc. Unauthorized use is strictly prohibited. Actual product and specifications may vary in dimension or detail from these drawings and are subject to change without notice. Window and door locations vary per elevation. MHBR No. 3514

5901 KINGSWOOD ROAD



UPPER LEVEL

FINISHED AREA: 2,228 sq.ft.
DIMENSIONS MAY VARY



5/4/2025

Design and details are the exclusive property of Wormald Homes, Inc. Unauthorized use is strictly prohibited. Actual product and specifications may vary in dimension or detail from these drawings and are subject to change without notice. Window and door locations vary per elevation. MHBR No. 3514

DESIGN BY:

W

W O R M A L D