

5816 KINGSWOOD ROAD
A SIGNATURE PROPERTY

BY

W

W O R M A L D



FRONT ELEVATION

DESIGN BY:

W

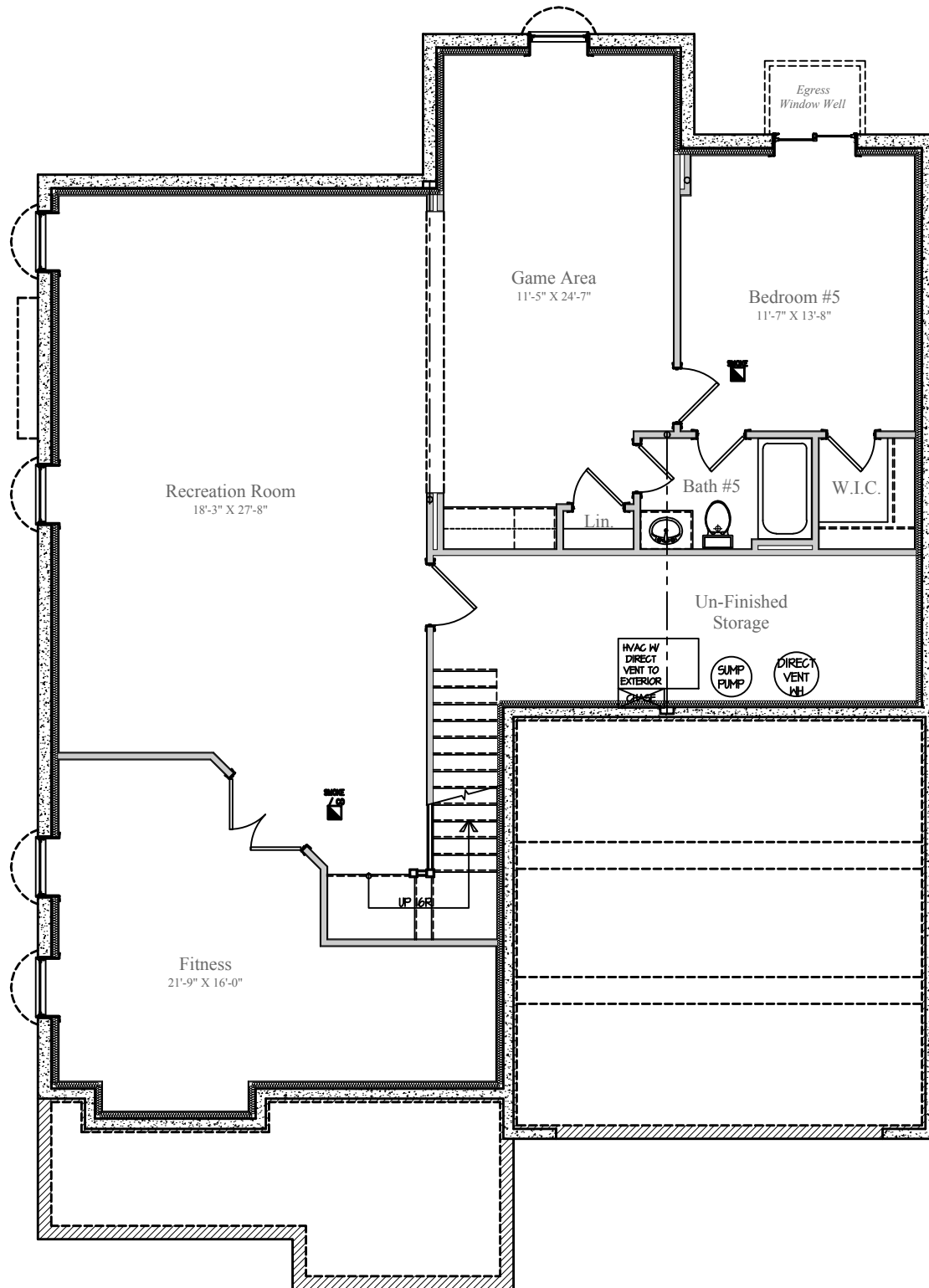
W O R M A L D



3/31/2019

Design and details are the exclusive property of Wormald Homes, Inc. Unauthorized use is strictly prohibited. Actual product and specifications may vary in dimension or detail from these drawings and are subject to change without notice. Window and door locations vary per elevation. MHBR No. 3514

8516 KINGSWOOD ROAD



LOWER LEVEL
FINISHED AREA: 1,587 sq.ft.
UN-FINISHED: 201 sq.ft.
DIMENSIONS MAY VARY

DESIGN BY:

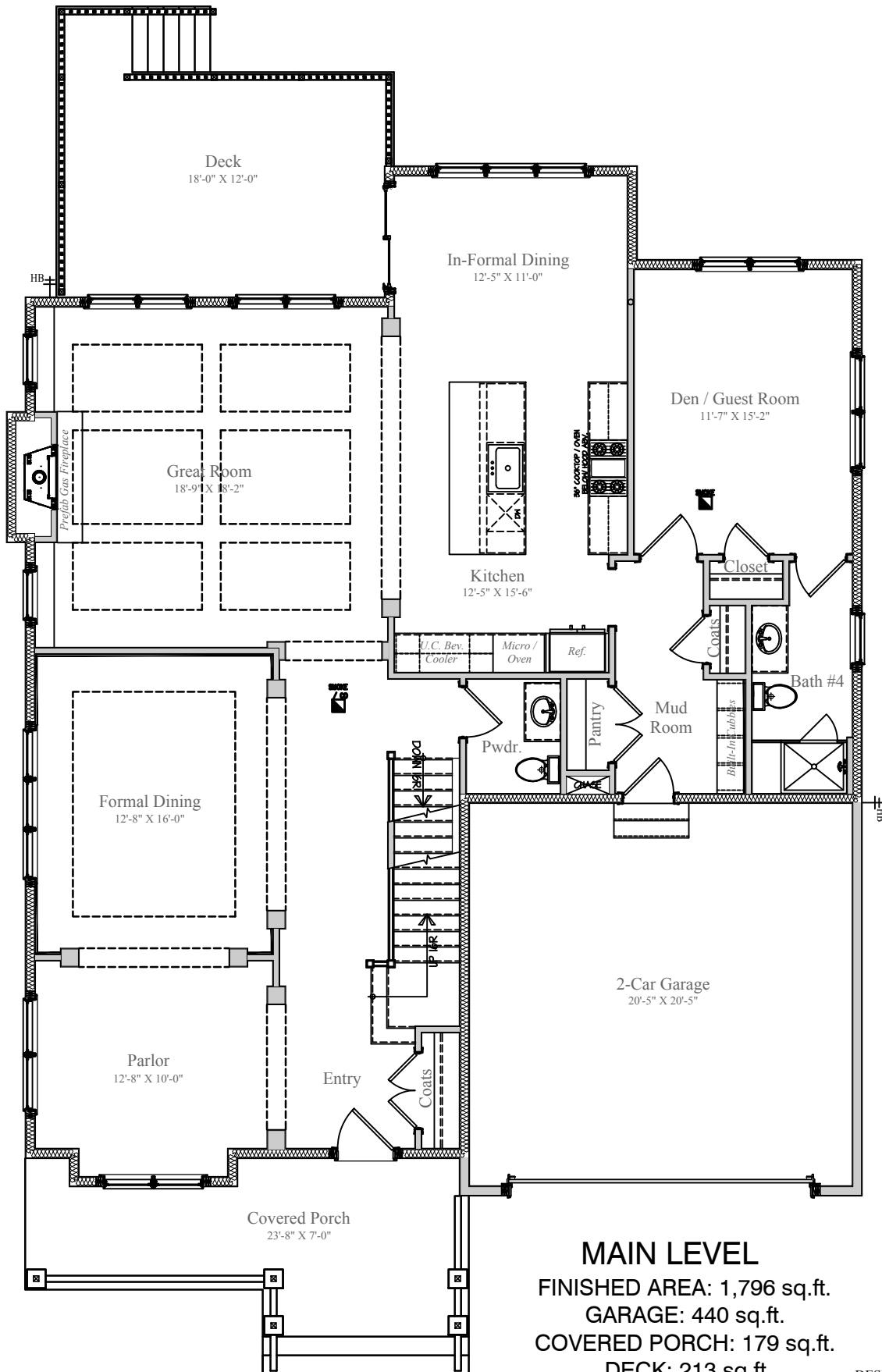


3/31/2019

Design and details are the exclusive property of Wormald Homes, Inc. Unauthorized use is strictly prohibited. Actual product and specifications may vary in dimension or detail from these drawings and are subject to change without notice. Window and door locations vary per elevation. MHBR No. 3514

W
W O R M A L D

8516 KINGSWOOD ROAD



MAIN LEVEL
 FINISHED AREA: 1,796 sq.ft.
 GARAGE: 440 sq.ft.
 COVERED PORCH: 179 sq.ft.
 DECK: 213 sq.ft.
 DIMENSIONS MAY VARY

DESIGN BY:



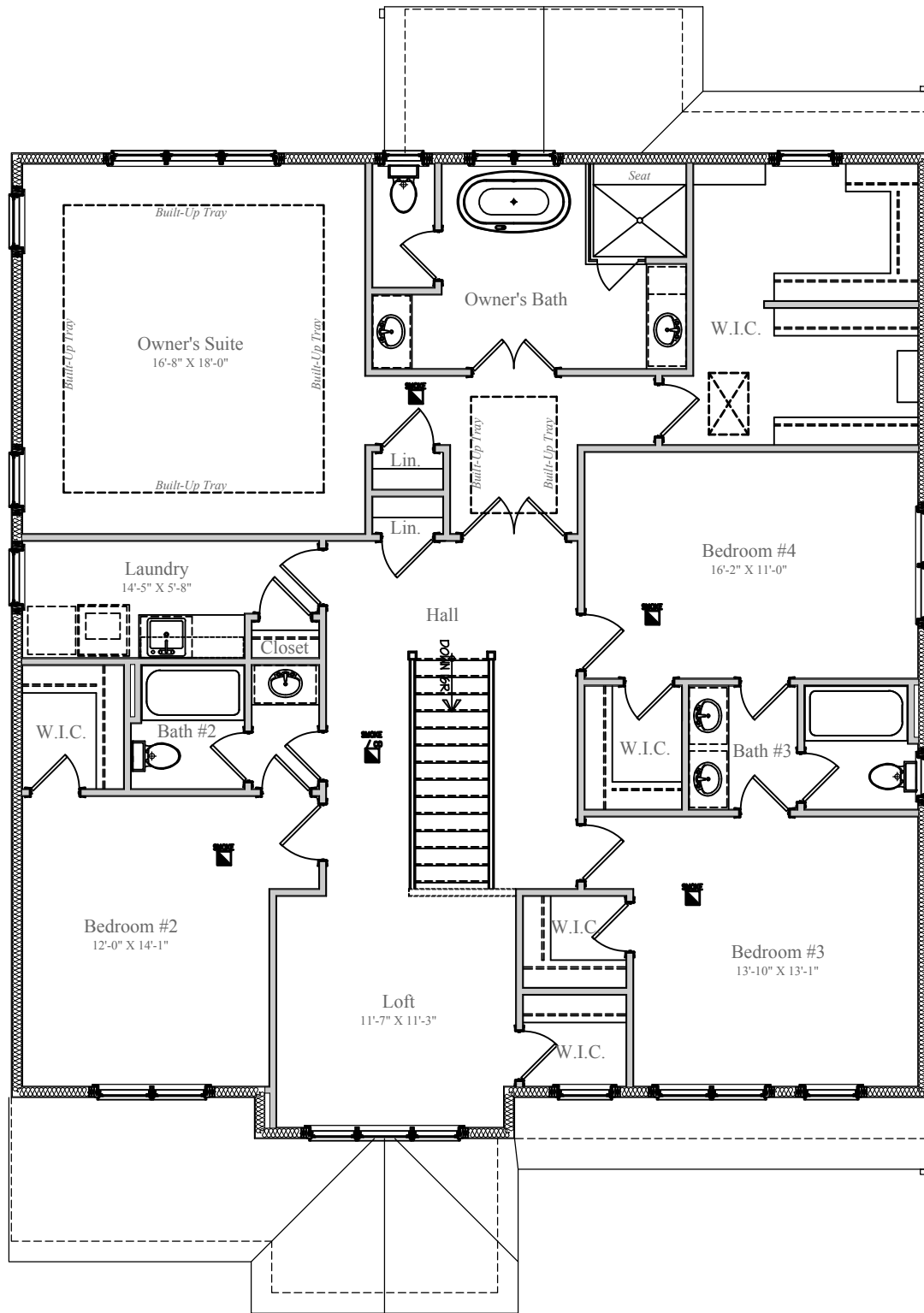
WORMALD



3/31/2019

Design and details are the exclusive property of Wormald Homes, Inc. Unauthorized use is strictly prohibited. Actual product and specifications may vary in dimension or detail from these drawings and are subject to change without notice. Window and door locations vary per elevation. MHBR No. 3514

8516 KINGSWOOD ROAD



UPPER LEVEL
FINISHED AREA: 2,040 sq.ft.
DIMENSIONS MAY VARY

DESIGN BY:



3/31/2019

Design and details are the exclusive property of Wormald Homes, Inc. Unauthorized use is strictly prohibited. Actual product and specifications may vary in dimension or detail from these drawings and are subject to change without notice. Window and door locations vary per elevation. MHBR No. 3514

W
WORMALD