

5122 BALTIMORE AVENUE  
A SIGNATURE PROPERTY

BY

W

W O R M A L D



FRONT ELEVATION

DESIGN BY:

W

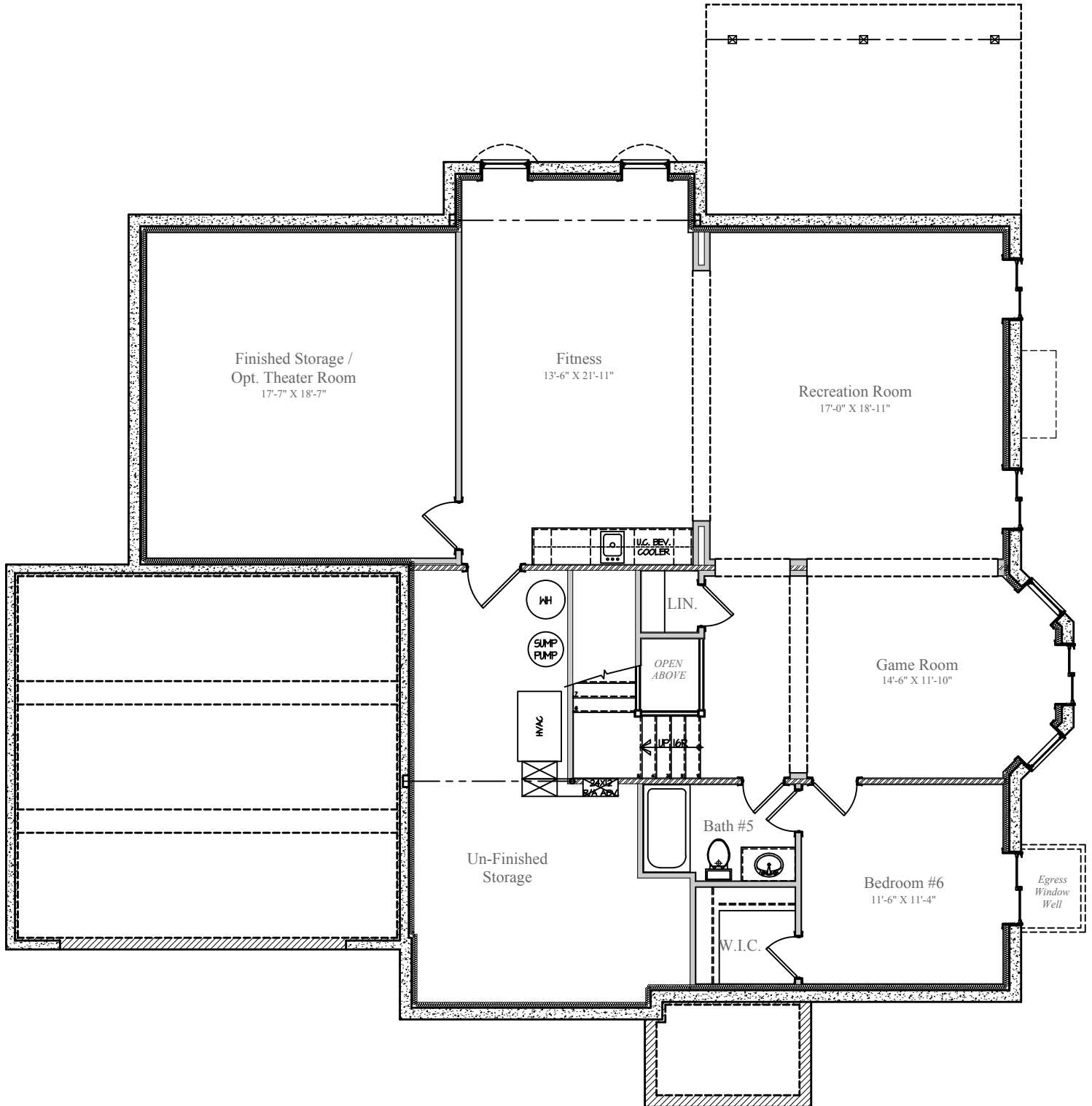
W O R M A L D



10/6/2019

Design and details are the exclusive property of Wormald Homes, Inc. Unauthorized use is strictly prohibited. Actual product and specifications may vary in dimension or detail from these drawings and are subject to change without notice. Window and door locations vary per elevation. MHBR No. 3514

# 5122 BALTIMORE AVENUE



**LOWER LEVEL**  
**FINISHED AREA: 1,680 sq.ft.**  
**UN-FINISHED: 322 sq. ft.**  
**DIMENSIONS MAY VARY**

DESIGN BY:



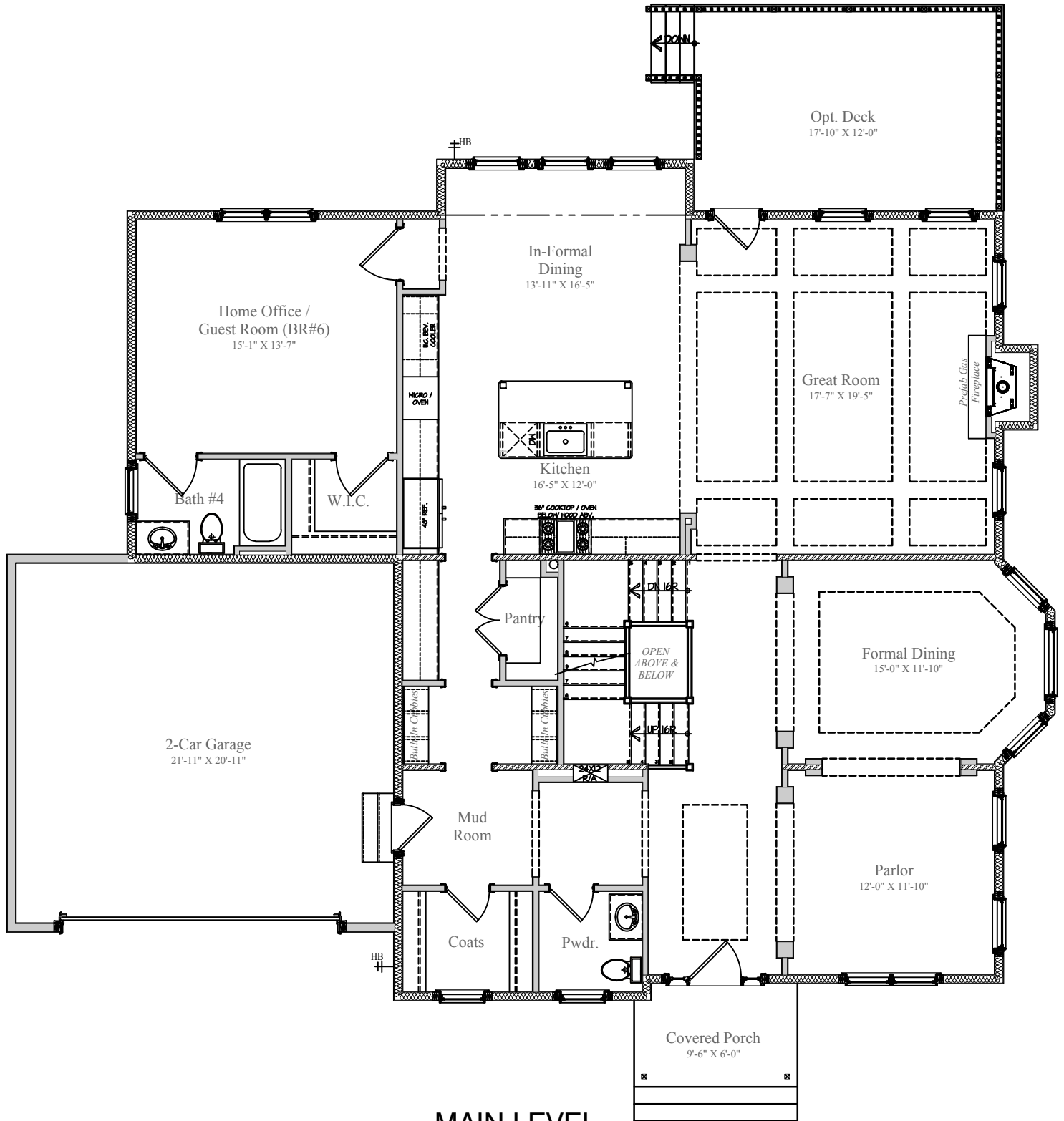
**WORMALD**



10/6/2019

Design and details are the exclusive property of Wormald Homes, Inc. Unauthorized use is strictly prohibited. Actual product and specifications may vary in dimension or detail from these drawings and are subject to change without notice. Window and door locations vary per elevation. MHBR No. 3514

# 5122 BALTIMORE AVENUE



## MAIN LEVEL

FINISHED AREA: 2,013 sq.ft.

GARAGE: 487 sq.ft.

COVERED PORCH: 56 sq.ft.

DECK: 216 sq.ft.

DIMENSIONS MAY VARY

DESIGN BY:

**W**

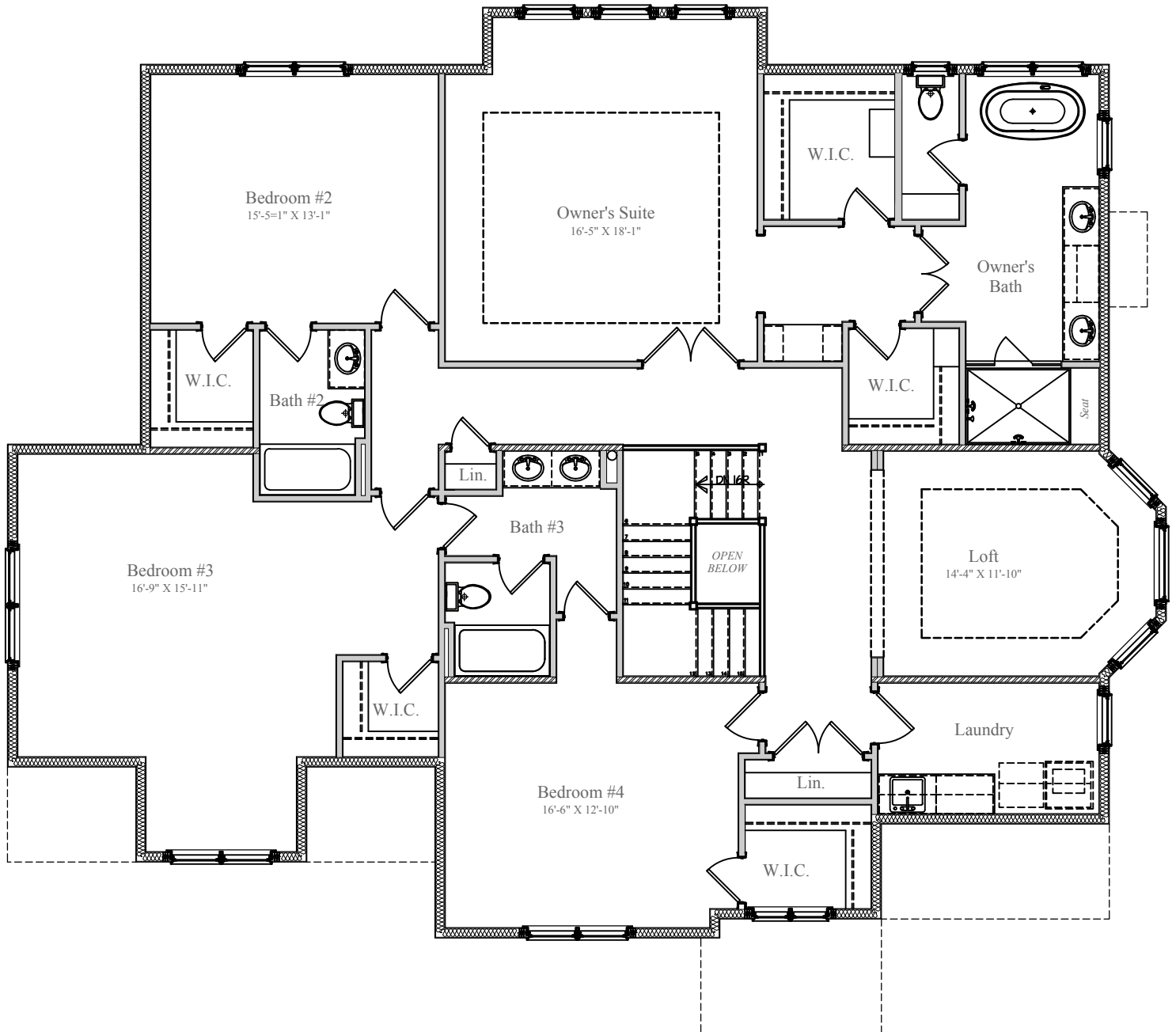
**WORMALD**



10/6/2019

Design and details are the exclusive property of Wormald Homes, Inc. Unauthorized use is strictly prohibited. Actual product and specifications may vary in dimension or detail from these drawings and are subject to change without notice. Window and door locations vary per elevation. MHBR No. 3514

# 5122 BALTIMORE AVENUE



**UPPER LEVEL**  
FINISHED AREA: 2,271 sq. ft.  
DIMENSIONS MAY VARY

DESIGN BY:



10/6/2019

Design and details are the exclusive property of Wormald Homes, Inc. Unauthorized use is strictly prohibited. Actual product and specifications may vary in dimension or detail from these drawings and are subject to change without notice. Window and door locations vary per elevation. MHBR No. 3514

**W**  
**WORMALD**