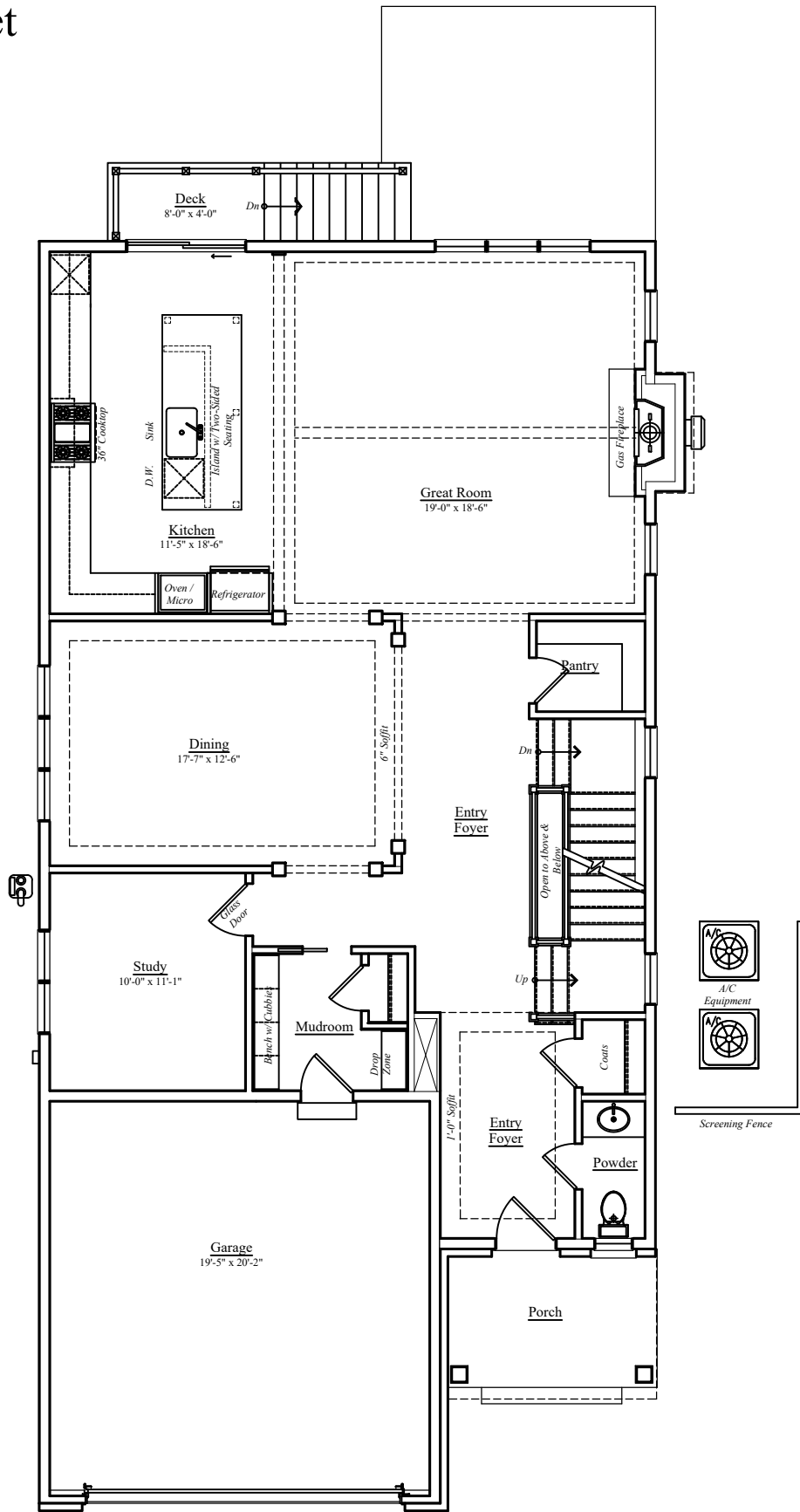


4630 15th Street
Arlington, VA



First Floor

Finished Area Above Grade: 1,470 sq.ft.

Covered Porch: 71 sq.ft.

Garage: 417 sq. ft.

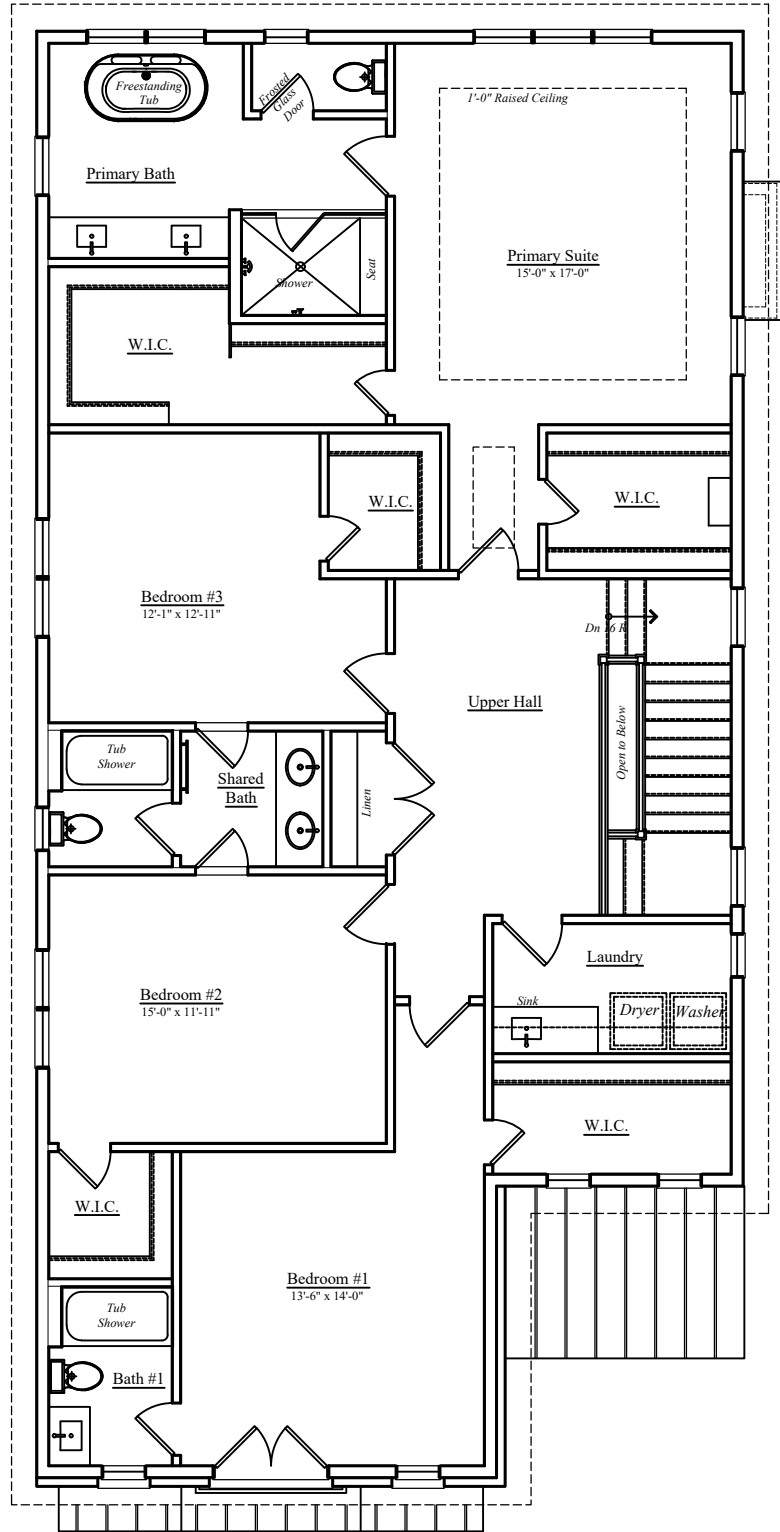
Finished square footage calculations for this house were made based on plan dimensions only and may vary from the finished square footage of the house as built. Areas calculated per the American National Standard For Single-Family Residential Buildings, Approved June 2013: ANSI Z765-2013



10/04/2023



4630 15th Street
Arlington, VA



Second Floor

Finished Area Above Grade: 1,878 sq.ft.

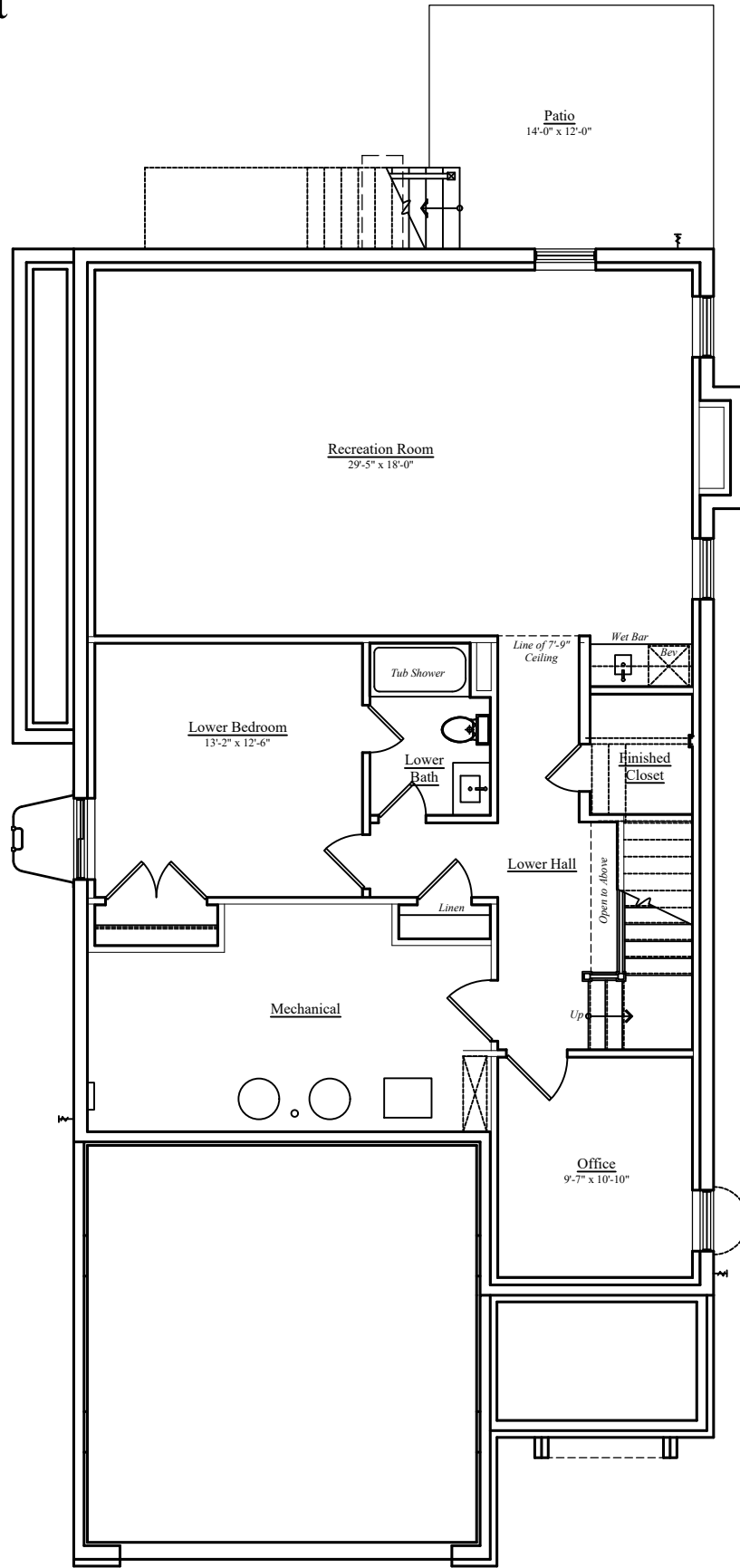
Finished square footage calculations for this house were made based on plan dimensions only and may vary from the finished square footage of the house as built. Areas calculated per the American National Standard For Single-Family Residential Buildings, Approved June 2013: ANSI Z765-2013



10/04/2023

W
WORMALD

4630 15th Street
Arlington, VA



Basement Level

Finished Area Below Grade: 1,267 sq.ft.

Unfinished Area Below Grade: 212 sq. ft.

Finished square footage calculations for this house were made based on plan dimensions only and may vary from the finished square footage of the house as built. Areas calculated per the American National Standard For Single-Family Residential Buildings, Approved June 2013: ANSI Z765-2013



10/04/2023



4630 15th Street
Arlington, VA



Front Elevation

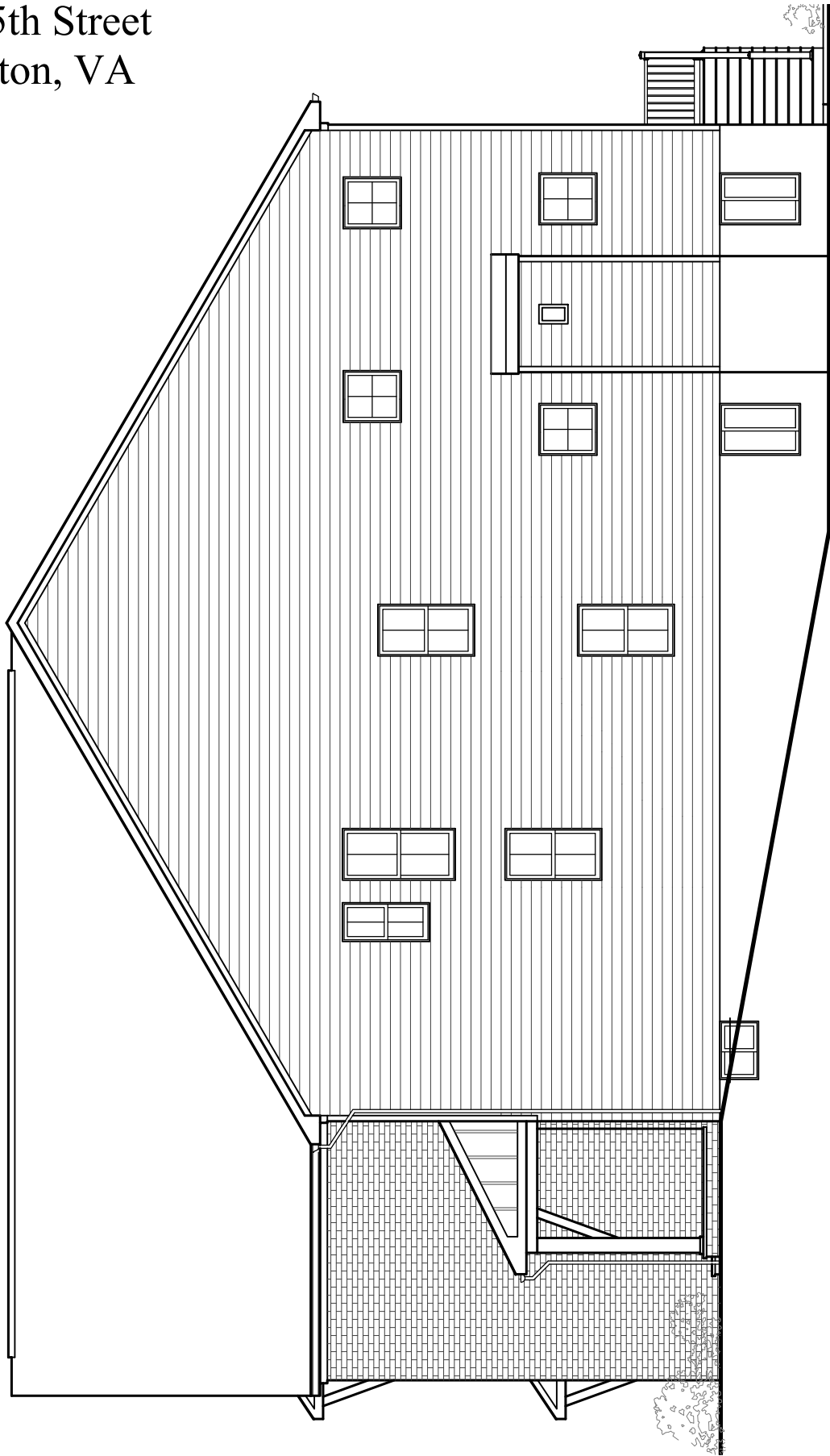
Finished square footage calculations for this house were made based on plan dimensions only and may vary from the finished square footage of the house as built. Areas calculated per the American National Standard For Single-Family Residential Buildings, Approved June 2013: ANSI Z765-2013



10/04/2023



4630 15th Street
Arlington, VA



Right Elevation

Finished square footage calculations for this house were made based on plan dimensions only and may vary from the finished square footage of the house as built. Areas calculated per the American National Standard For Single-Family Residential Buildings, Approved June 2013: ANSI Z765-2013



10/04/2023

W
WORMALD

4630 15th Street
Arlington, VA



Rear Elevation

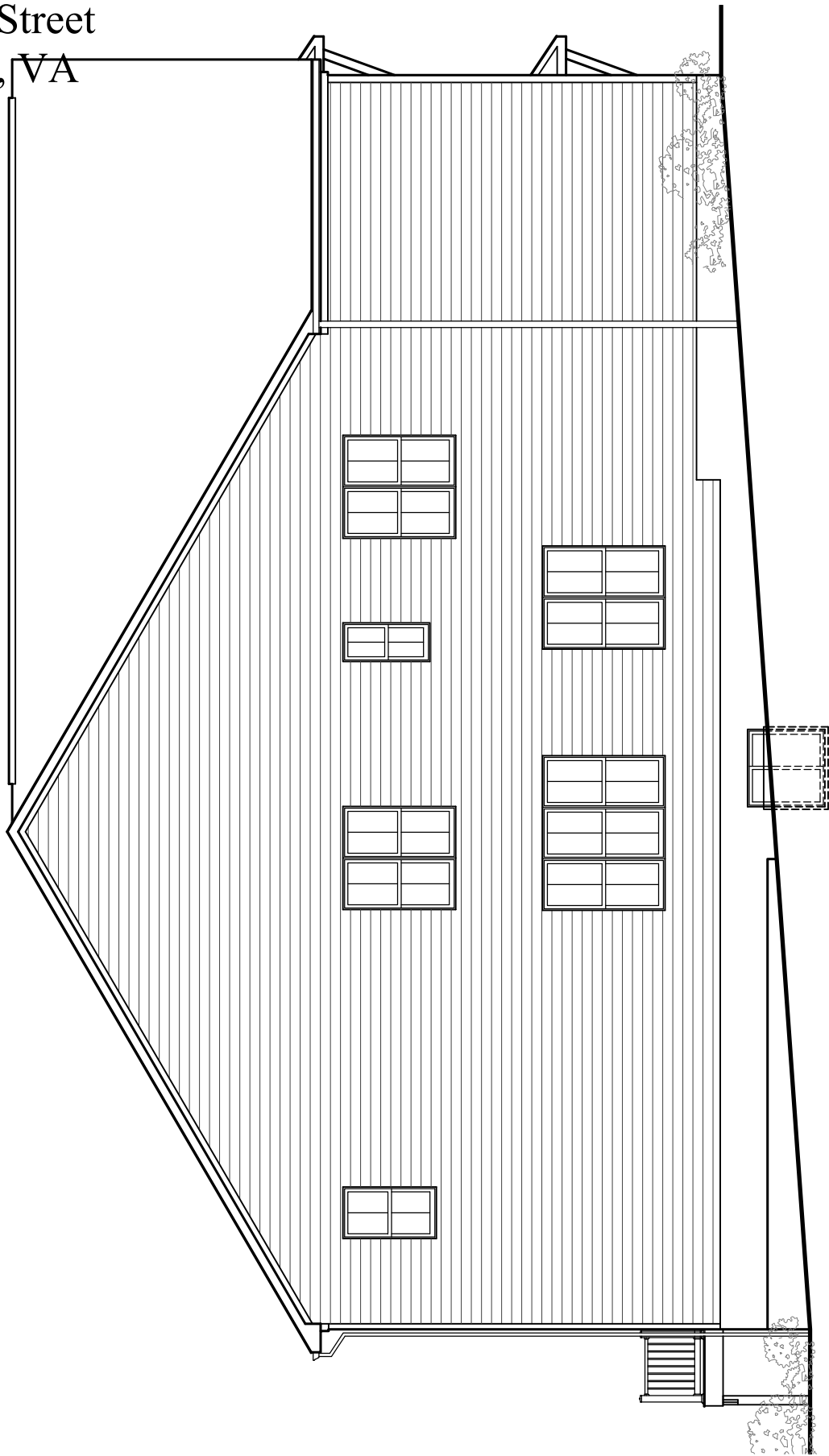
Finished square footage calculations for this house were made based on plan dimensions only and may vary from the finished square footage of the house as built. Areas calculated per the American National Standard For Single-Family Residential Buildings, Approved June 2013: ANSI Z765-2013



10/04/2023



4630 15th Street
Arlington, VA



Left Elevation

Finished square footage calculations for this house were made based on plan dimensions only and may vary from the finished square footage of the house as built. Areas calculated per the American National Standard For Single-Family Residential Buildings, Approved June 2013: ANSI Z765-2013



10/04/2023

W
WORMALD