

4617 SAUL ROAD



FRONT ELEVATION

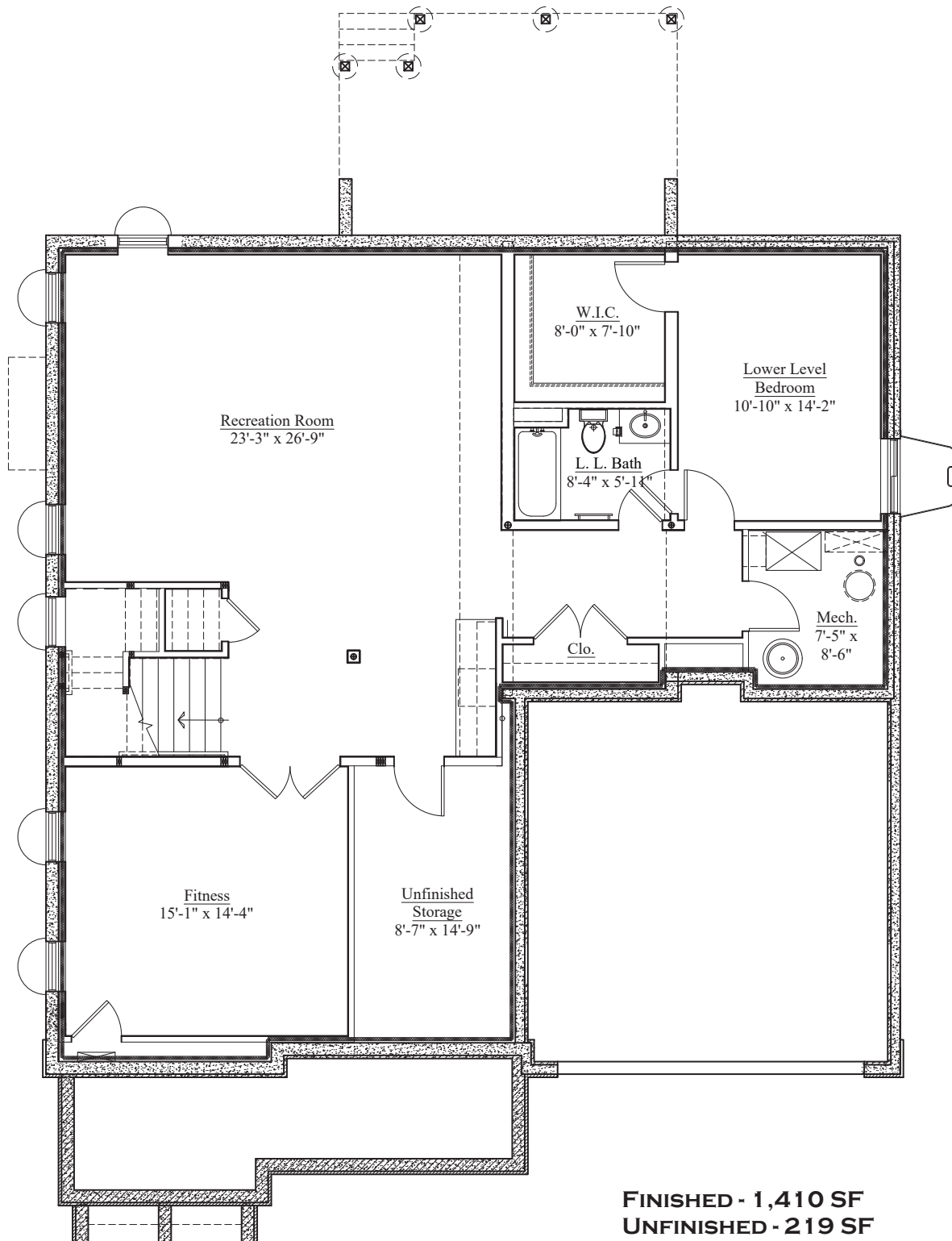


DATE: 8/29/25

Design and details are the exclusive property of Wormald Homes, Inc. Unauthorized use is strictly prohibited. Actual product and specifications may vary in dimension or detail from these drawings and are subject to change without notice. Window and door locations vary per elevation. MHBR No. 3514
Finished square footage calculations for this house were made based on plan dimensions only and may vary from the finished square footage of the house as built.
Areas calculated per the American National Standard For Single-Family Residential Buildings, Approved June 2013: ANSI Z765-2013

W
W O R M A L D

4617 SAUL ROAD



LOWER LEVEL FLOOR PLAN

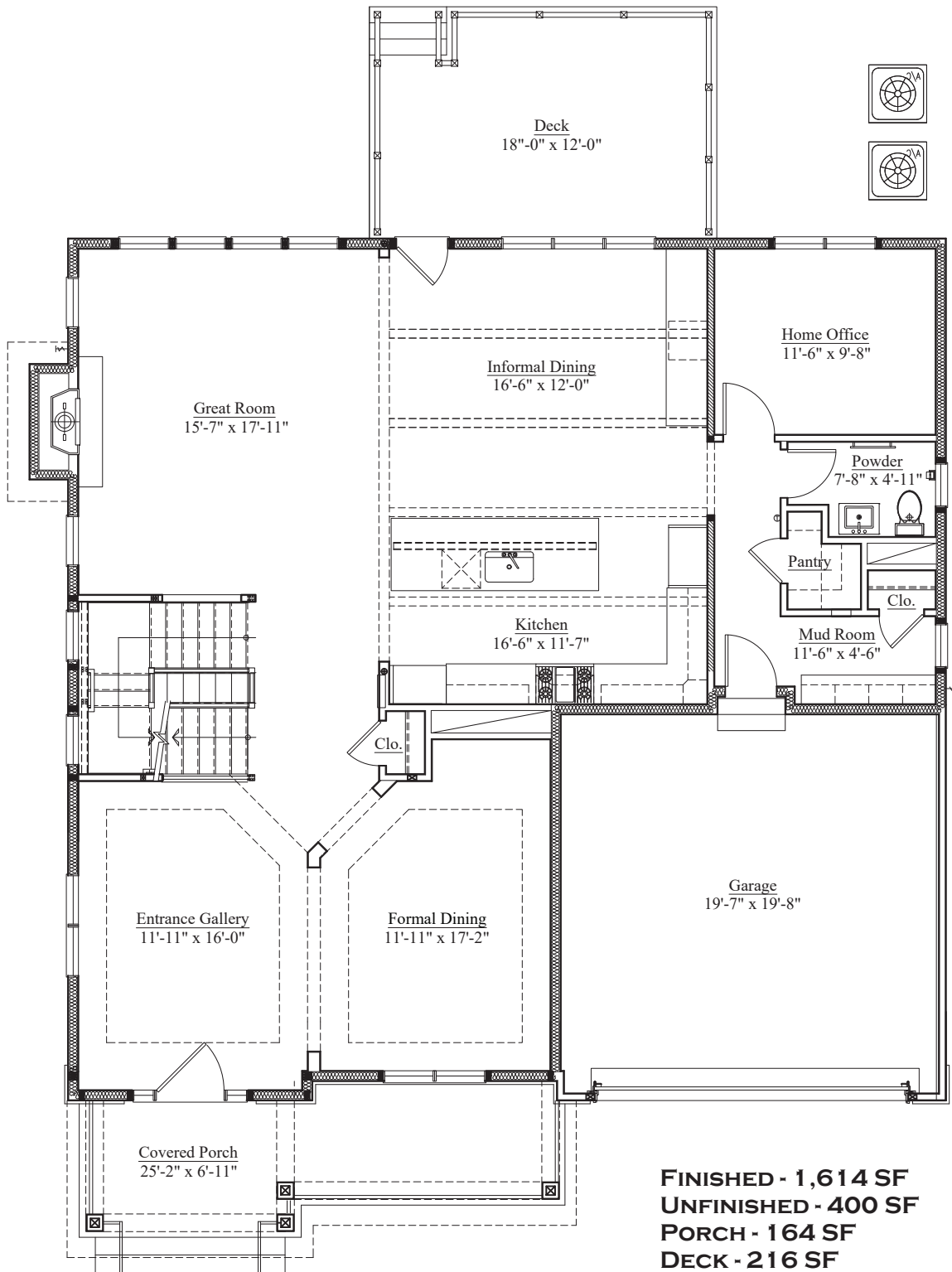


DATE: 8/29/25

Design and details are the exclusive property of Wornald Homes, Inc. Unauthorized use is strictly prohibited. Actual product and specifications may vary in dimension or detail from these drawings and are subject to change without notice. Window and door locations vary per elevation. MHBR No. 3514
Finished square footage calculations for this house were made based on plan dimensions only and may vary from the finished square footage of the house as built.
Areas calculated per the American National Standard For Single-Family Residential Buildings, Approved June 2013: ANSI Z765-2013

W
WORNALD

4617 SAUL ROAD



MAIN LEVEL FLOOR PLAN

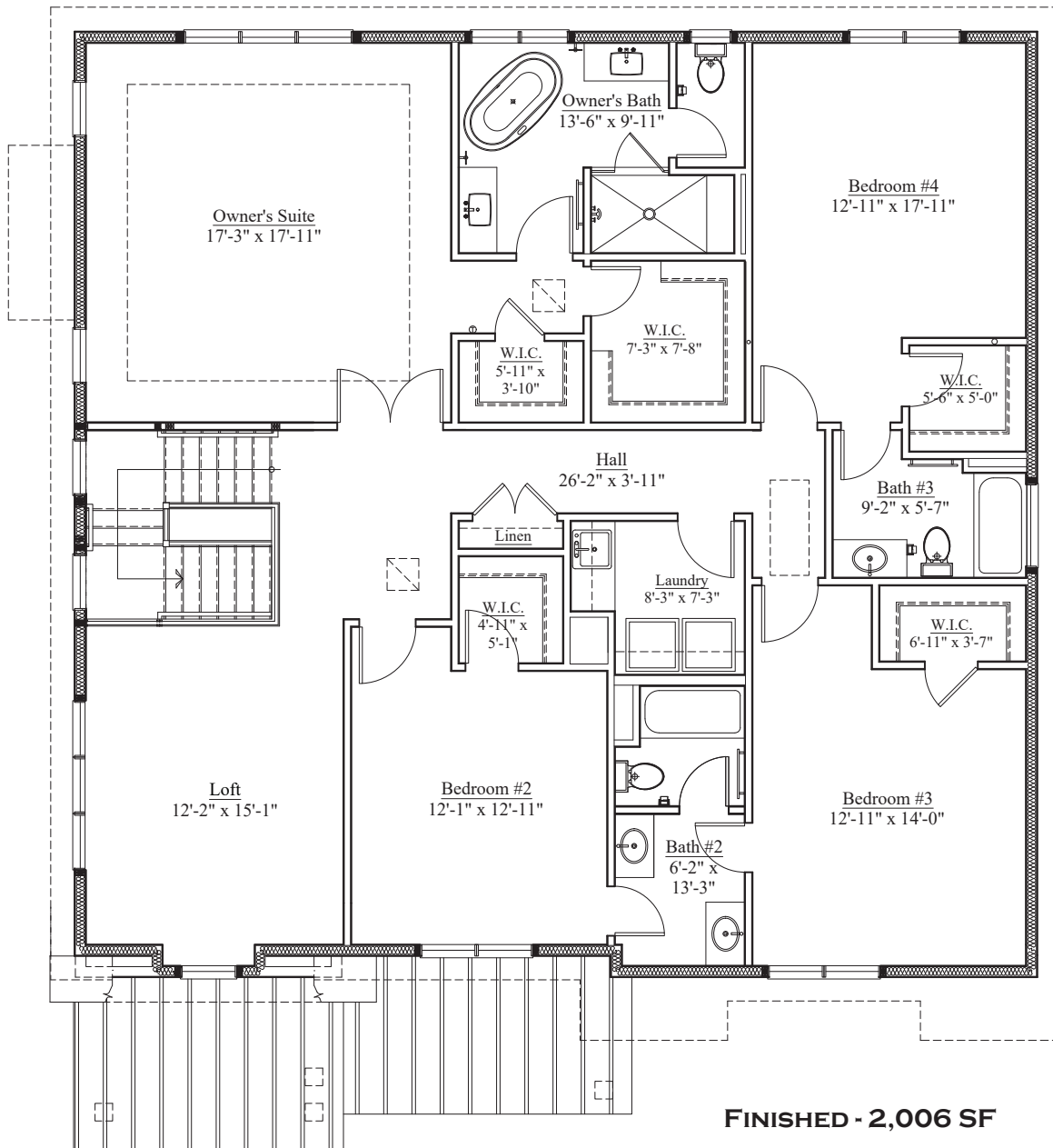


DATE: 8/29/25

Design and details are the exclusive property of Wormald Homes, Inc. Unauthorized use is strictly prohibited. Actual product and specifications may vary in dimension or detail from these drawings and are subject to change without notice. Window and door locations vary per elevation. MHBR No. 3514
Finished square footage calculations for this house were made based on plan dimensions only and may vary from the finished square footage of the house as built.
Areas calculated per the American National Standard For Single-Family Residential Buildings, Approved June 2013: ANSI Z765-2013

W
WORMALD

4617 SAUL ROAD



UPPER LEVEL FLOOR PLAN



DATE: 8/29/25

Design and details are the exclusive property of Wormald Homes, Inc. Unauthorized use is strictly prohibited. Actual product and specifications may vary in dimension or detail from these drawings and are subject to change without notice. Window and door locations vary per elevation. MHBR No. 3514
Finished square footage calculations for this house were made based on plan dimensions only and may vary from the finished square footage of the house as built.
Areas calculated per the American National Standard For Single-Family Residential Buildings, Approved June 2013: ANSI Z765-2013

W
WORMALD