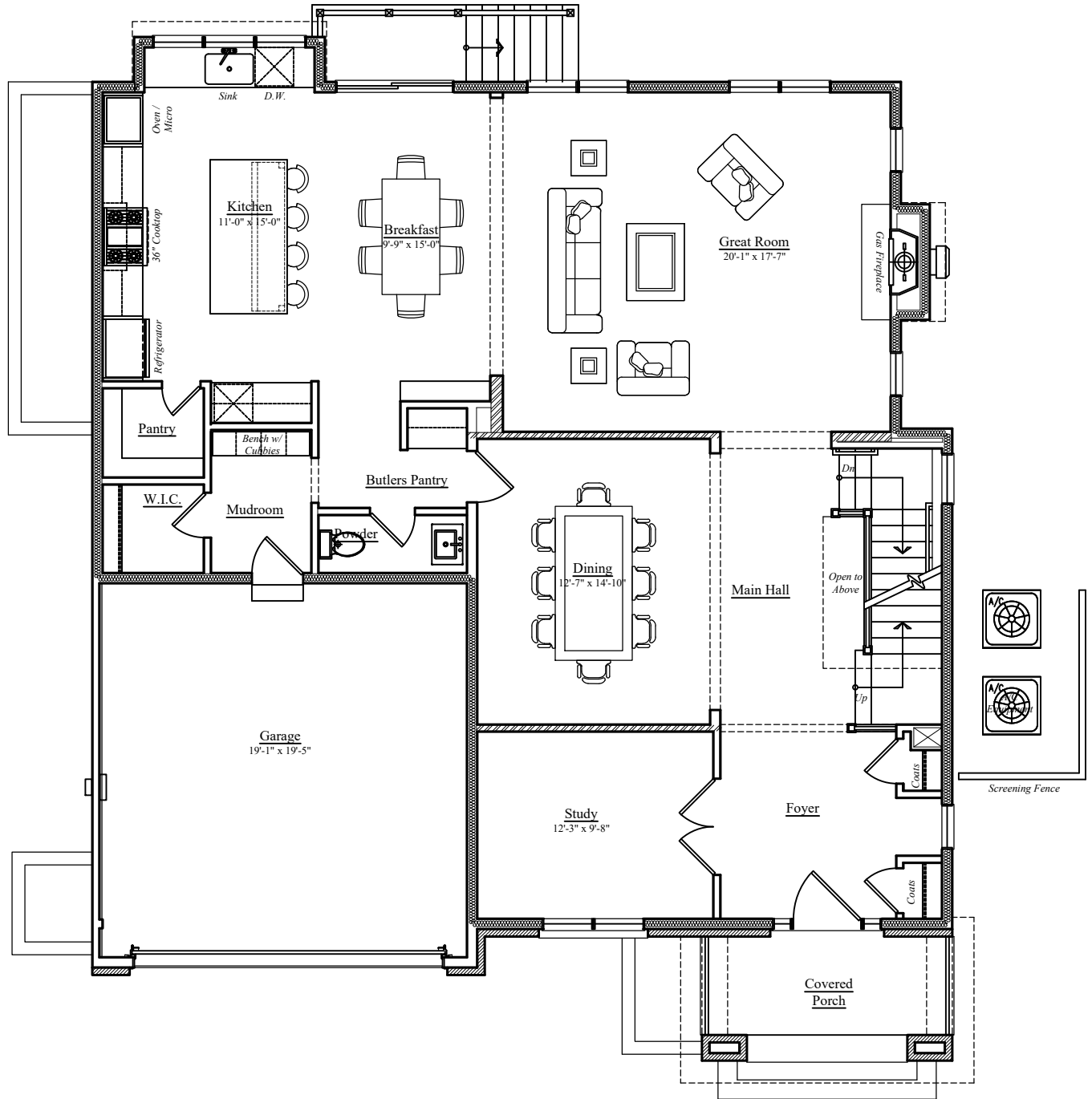


4513 20th Street
Arlington, VA



First Floor

Finished Area Above Grade: 1,600 sq.ft.
Garage: 389 sq. ft.

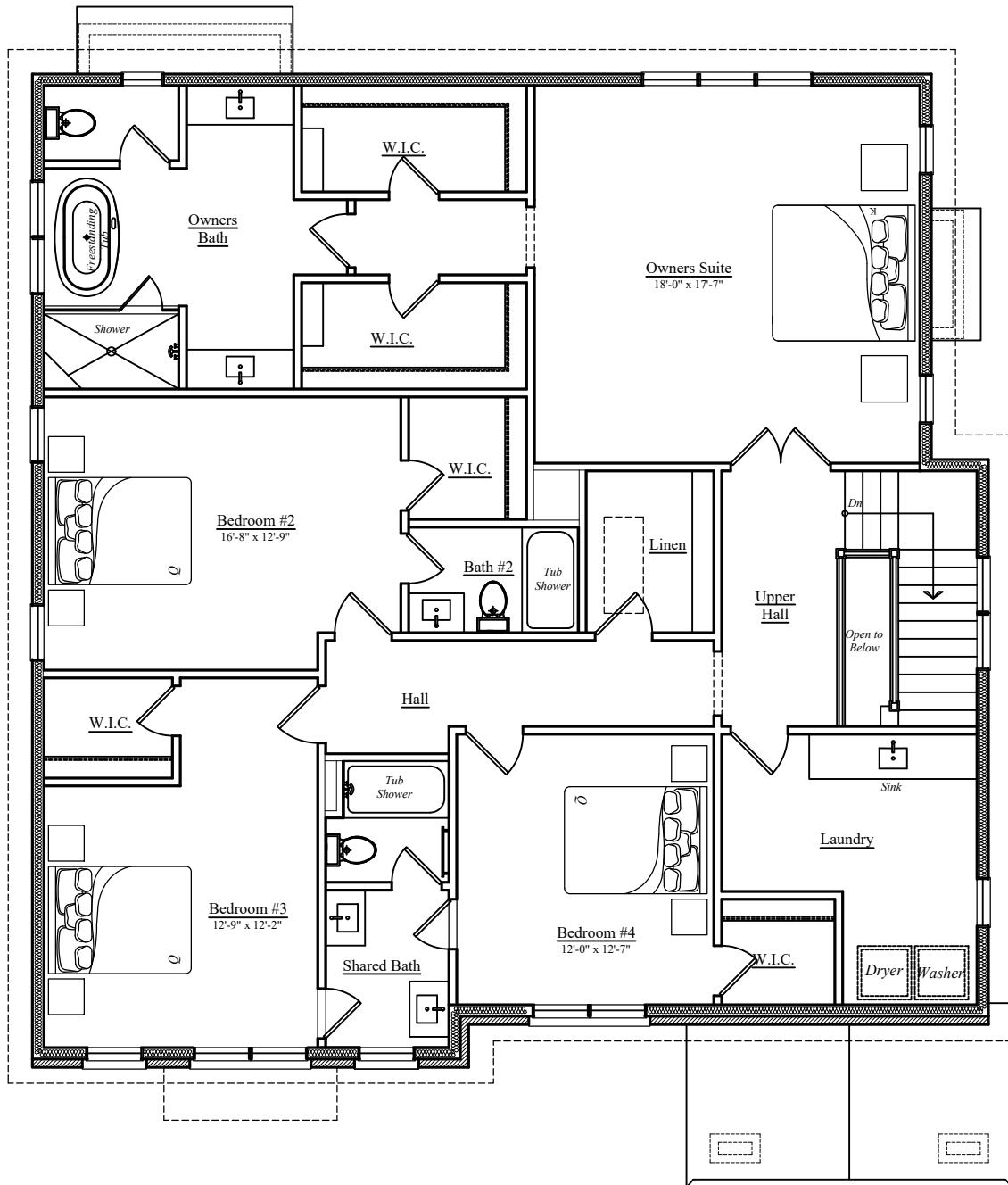
Finished square footage calculations for this house were made based on plan dimensions only and may vary from the finished square footage of the house as built. Areas calculated per the American National Standard For Single-Family Residential Buildings, Approved June 2013: ANSI Z765-2013



04/02/2022

W
WORMALD

4513 20th Street
Arlington, VA



Second Floor

Finished Area Above Grade: 1,940 sq.ft.

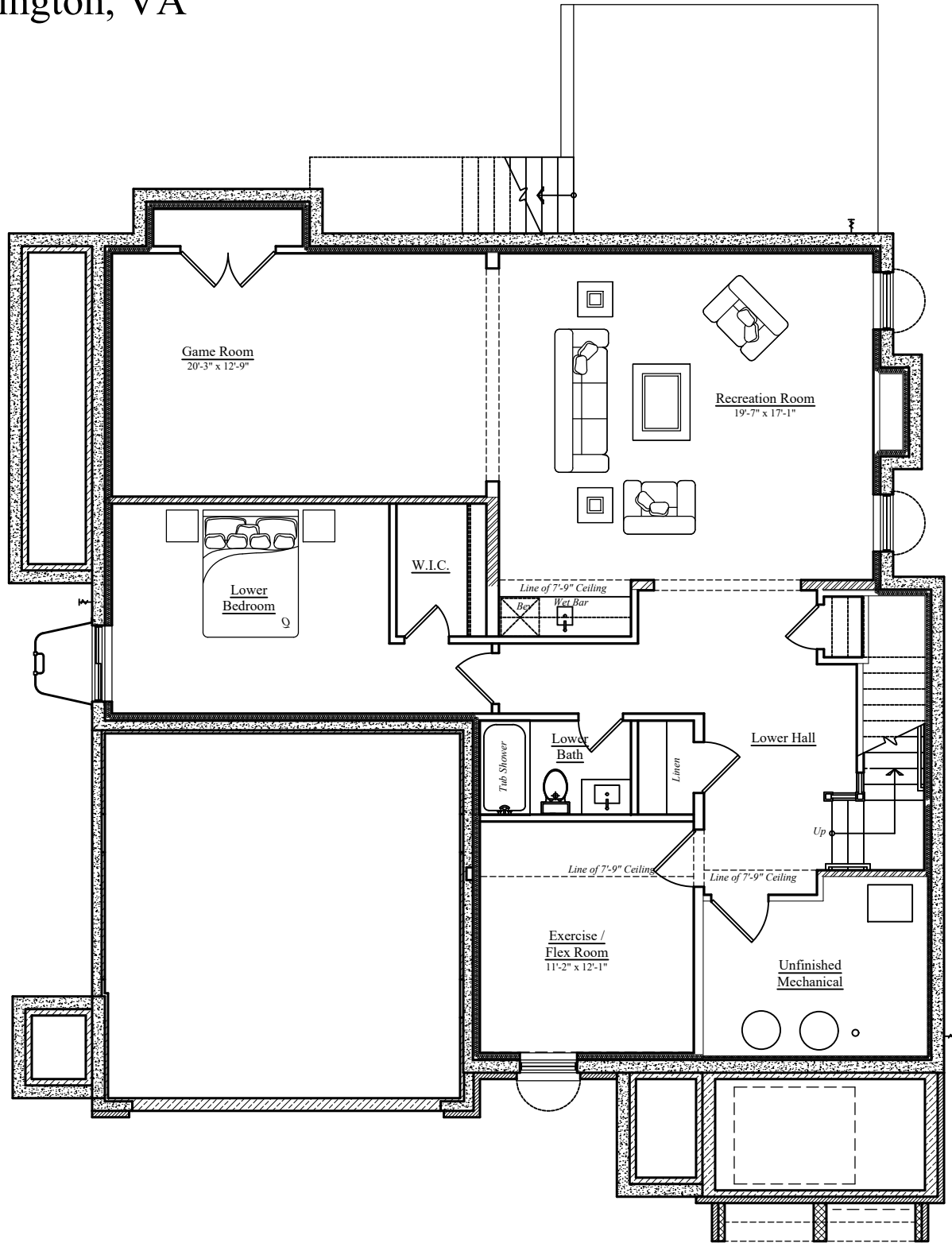
Finished square footage calculations for this house were made based on plan dimensions only and may vary from the finished square footage of the house as built. Areas calculated per the American National Standard For Single-Family Residential Buildings, Approved June 2013: ANSI Z765-2013



04/02/2022

W
WORMALD

4513 20th Street
Arlington, VA



Basement Level

Finished Area Below Grade: 1,478 sq.ft.

Unfinished Area Below Grade: 121 sq. ft.

Finished square footage calculations for this house were made based on plan dimensions only and may vary from the finished square footage of the house as built. Areas calculated per the American National Standard For Single-Family Residential Buildings, Approved June 2013: ANSI Z765-2013



04/02/2022



4513 20th Street
Arlington, VA



Front Elevation

Finished square footage calculations for this house were made based on plan dimensions only and may vary from the finished square footage of the house as built. Areas calculated per the American National Standard For Single-Family Residential Buildings, Approved June 2013: ANSI Z765-2013



04/02/2022



4513 20th Street
Arlington, VA



Right Elevation

Finished square footage calculations for this house were made based on plan dimensions only and may vary from the finished square footage of the house as built. Areas calculated per the American National Standard For Single-Family Residential Buildings, Approved June 2013: ANSI Z765-2013



04/02/2022



4513 20th Street
Arlington, VA



Rear Elevation

Finished square footage calculations for this house were made based on plan dimensions only and may vary from the finished square footage of the house as built. Areas calculated per the American National Standard For Single-Family Residential Buildings, Approved June 2013: ANSI Z765-2013



04/02/2022



4513 20th Street
Arlington, VA



Left Elevation

Finished square footage calculations for this house were made based on plan dimensions only and may vary from the finished square footage of the house as built. Areas calculated per the American National Standard For Single-Family Residential Buildings, Approved June 2013: ANSI Z765-2013



04/02/2022

