

4427 19th ROAD NORTH
A SIGNATURE PROPERTY

BY

W

W O R M A L D



FRONT ELEVATION

DESIGN BY:

W

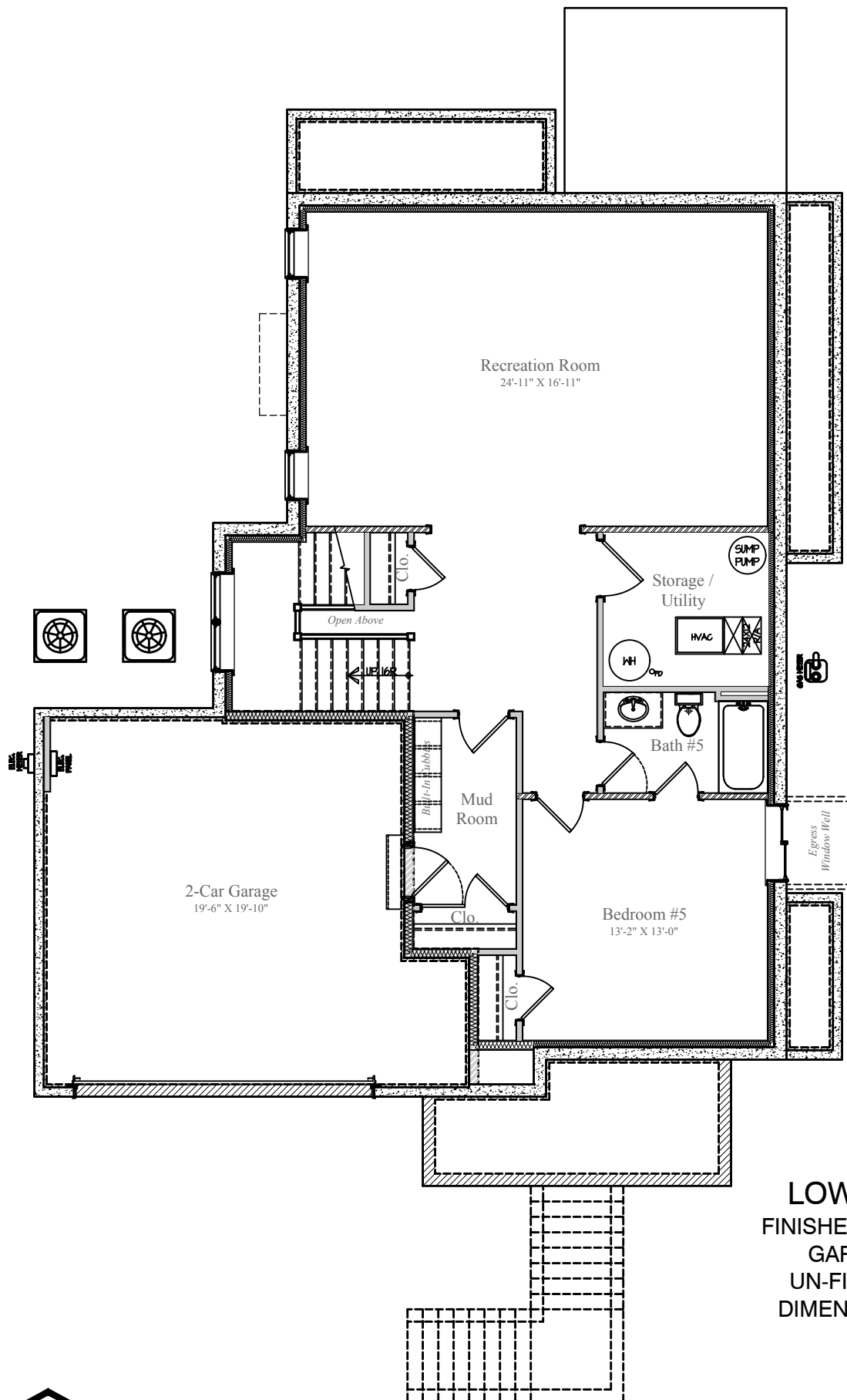
W O R M A L D



6/18/2023

Design and details are the exclusive property of Wormald Homes, Inc. Unauthorized use is strictly prohibited. Actual product and specifications may vary in dimension or detail from these drawings and are subject to change without notice. Window and door locations vary per elevation. MHBR No. 3514

4427 19TH ROAD NORTH



LOWER LEVEL
FINISHED AREA: 1,084 sq.ft.
GARAGE: 457 sq.ft.
UN-FINISHED: 85 sq.ft.
DIMENSIONS MAY VARY

DESIGN BY:



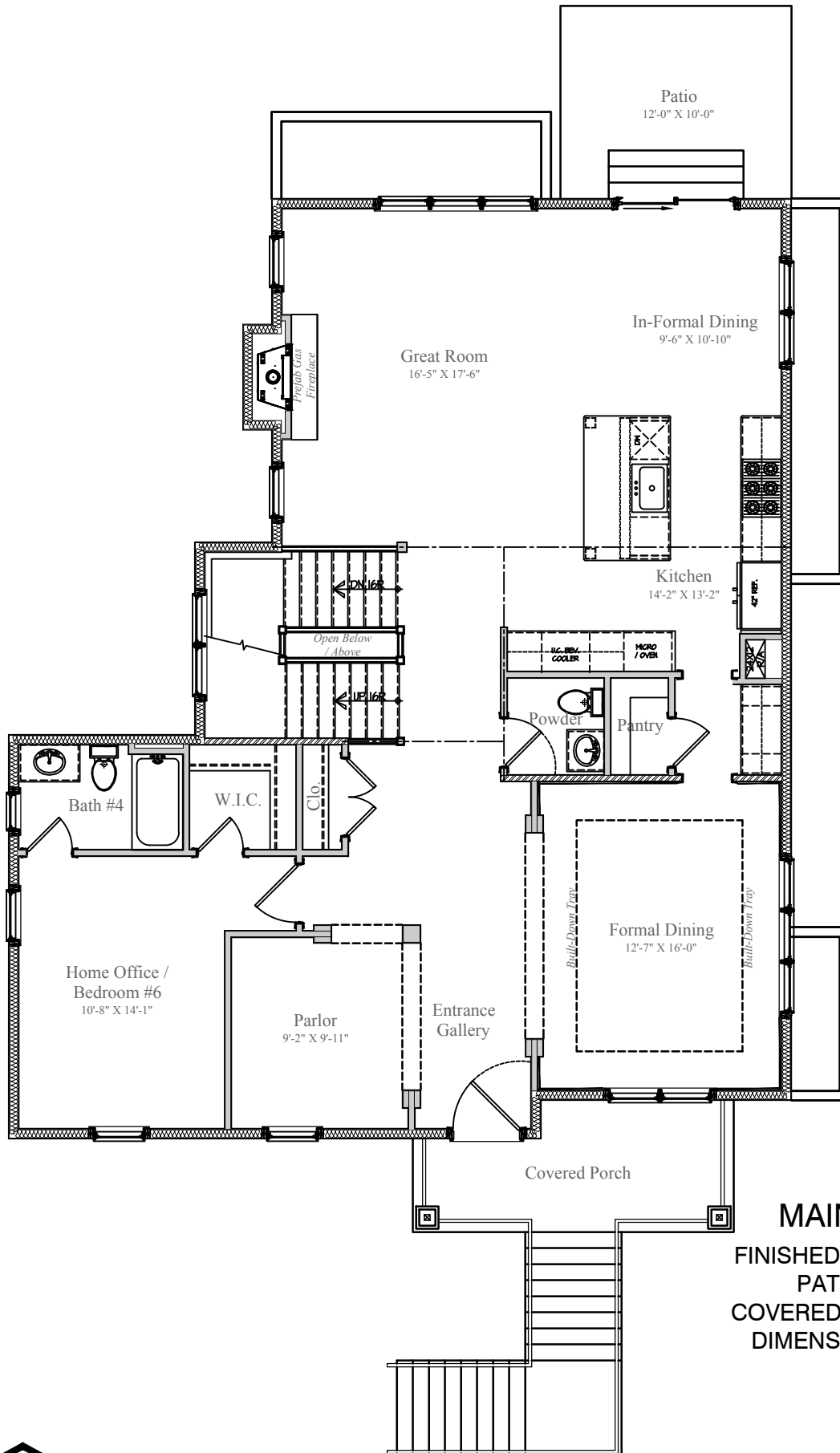
WORMALD



6/18/2023

Design and details are the exclusive property of Wormald Homes, Inc. Unauthorized use is strictly prohibited. Actual product and specifications may vary in dimension or detail from these drawings and are subject to change without notice. Window and door locations vary per elevation. MHBR No. 3514

4427 19TH ROAD NORTH



MAIN LEVEL

FINISHED AREA: 1,619 sq.ft.
 PATIO: 120 sq.ft.
 COVERED PORCH: 100 sq.ft.
 DIMENSIONS MAY VARY

DESIGN BY:



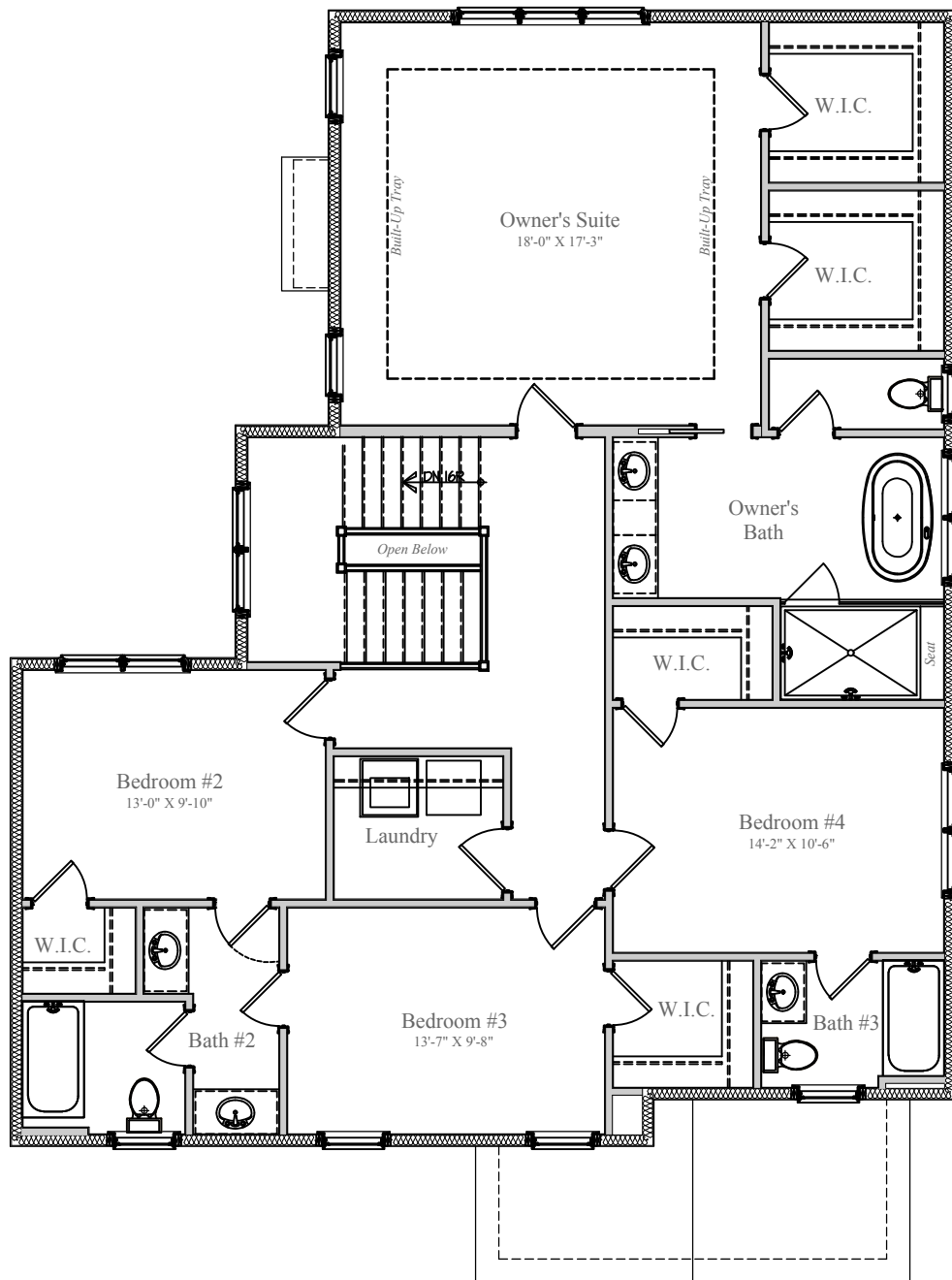
WORMALD



6/18/2023

Design and details are the exclusive property of Wormald Homes, Inc. Unauthorized use is strictly prohibited. Actual product and specifications may vary in dimension or detail from these drawings and are subject to change without notice. Window and door locations vary per elevation. MHBR No. 3514

4427 19TH ROAD NORTH



UPPER LEVEL

FINISHED AREA: 1,506 sq. ft.

DIMENSIONS MAY VARY

DESIGN BY:

W

WORMALD



6/18/2023

Design and details are the exclusive property of Wormald Homes, Inc. Unauthorized use is strictly prohibited. Actual product and specifications may vary in dimension or detail from these drawings and are subject to change without notice. Window and door locations vary per elevation. MHBR No. 3514