

252 N. BRYAN STREET
A SIGNATURE PROPERTY
BY

W
W O R M A L D



FRONT ELEVATION

DESIGN BY:

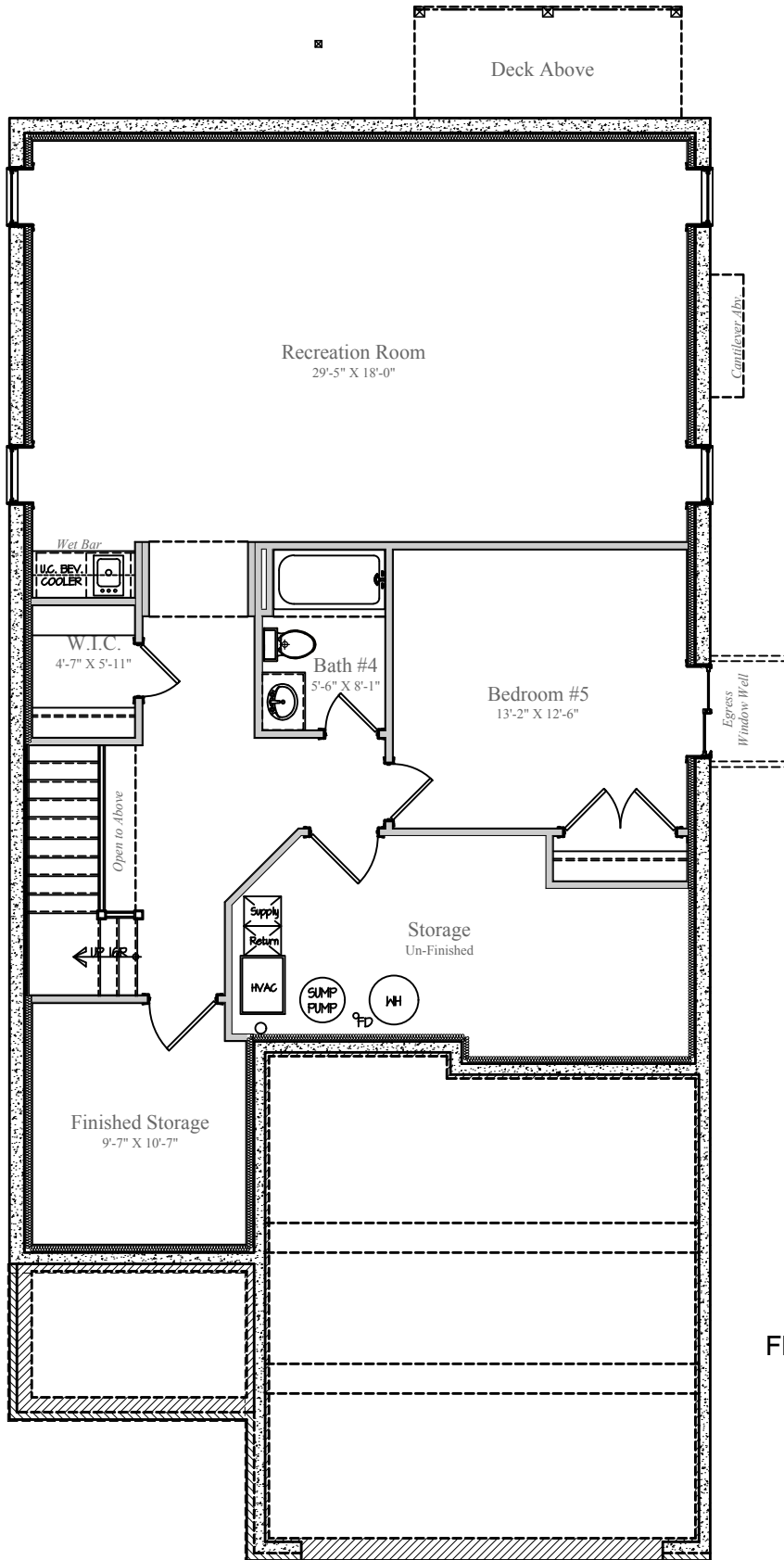


10/10/2021

Design and details are the exclusive property of Wormald Homes, Inc. Unauthorized use is strictly prohibited. Actual product and specifications may vary in dimension or detail from these drawings and are subject to change without notice. Window and door locations vary per elevation. MHBR No. 3514

W
W O R M A L D

252 N. BRYAN STREET



LOWER LEVEL
FINISHED AREA: 1,246 sq.ft.
UN-FINISHED: 198 sq. ft.
DIMENSIONS MAY VARY

DESIGN BY:



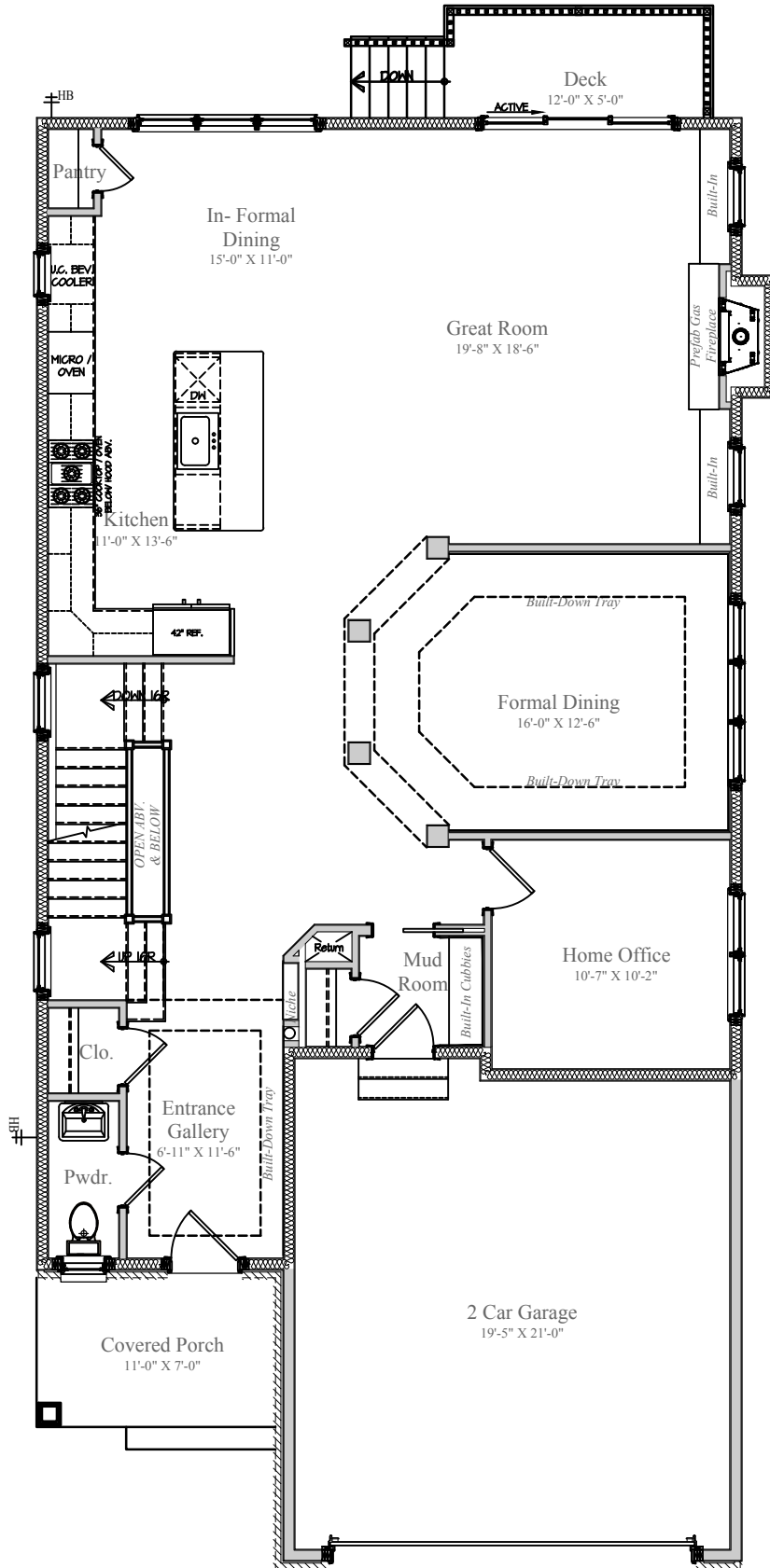
WORMALD



10/10/2021

Design and details are the exclusive property of Wormald Homes, Inc. Unauthorized use is strictly prohibited. Actual product and specifications may vary in dimension or detail from these drawings and are subject to change without notice. Window and door locations vary per elevation. MHBR No. 3514

252 N. BRYAN STREET



MAIN LEVEL

FINISHED AREA: 1,453sq.ft.

GARAGE: 444 sq. ft.

DECK: 60 sq. ft.

FRONT PORCH: 77 sq. ft.

DIMENSIONS MAY VARY

DESIGN BY:

W

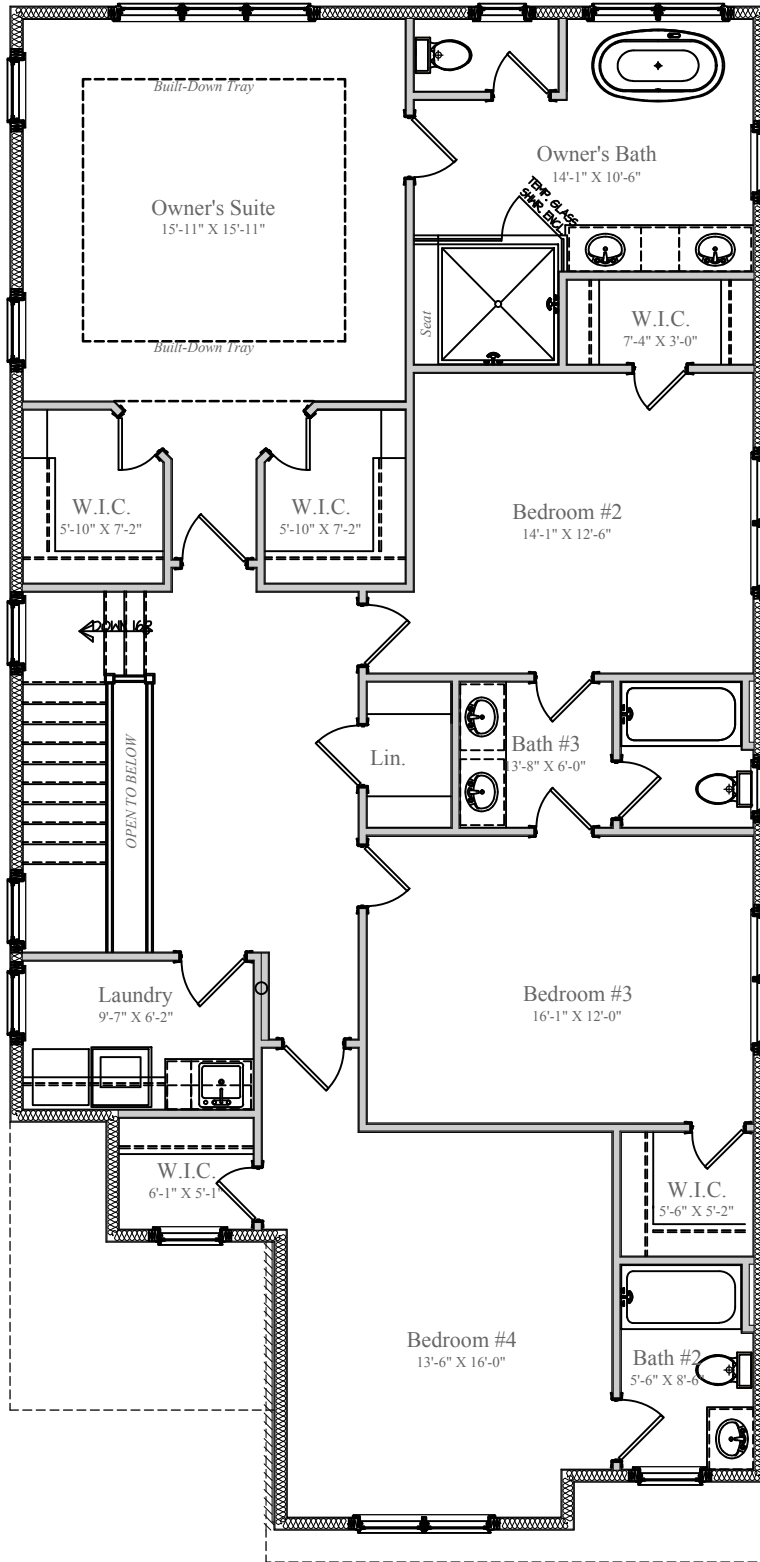
WORMALD



10/10/2021

Design and details are the exclusive property of Wormald Homes, Inc. Unauthorized use is strictly prohibited. Actual product and specifications may vary in dimension or detail from these drawings and are subject to change without notice. Window and door locations vary per elevation. MHBR No. 3514

252 N. BRYAN STREET



UPPER LEVEL
FINISHED AREA: 1,832 sq. ft.
DIMENSIONS MAY VARY



10/10/2021

Design and details are the exclusive property of Wormald Homes, Inc. Unauthorized use is strictly prohibited. Actual product and specifications may vary in dimension or detail from these drawings and are subject to change without notice. Window and door locations vary per elevation. MHBR No. 3514

DESIGN BY:
W
W O R M A L D