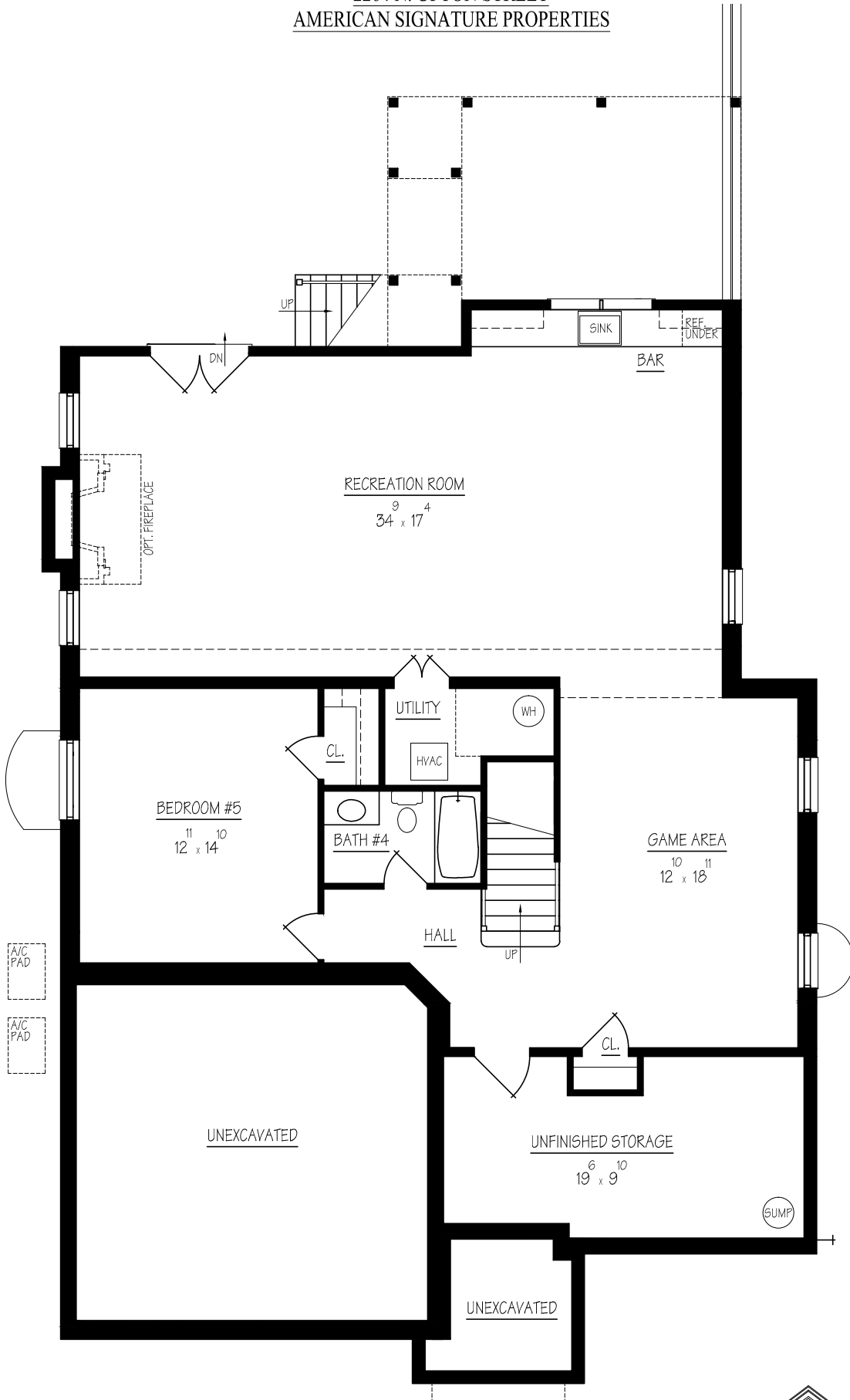


2264 N. UPTON STREET  
AMERICAN SIGNATURE PROPERTIES

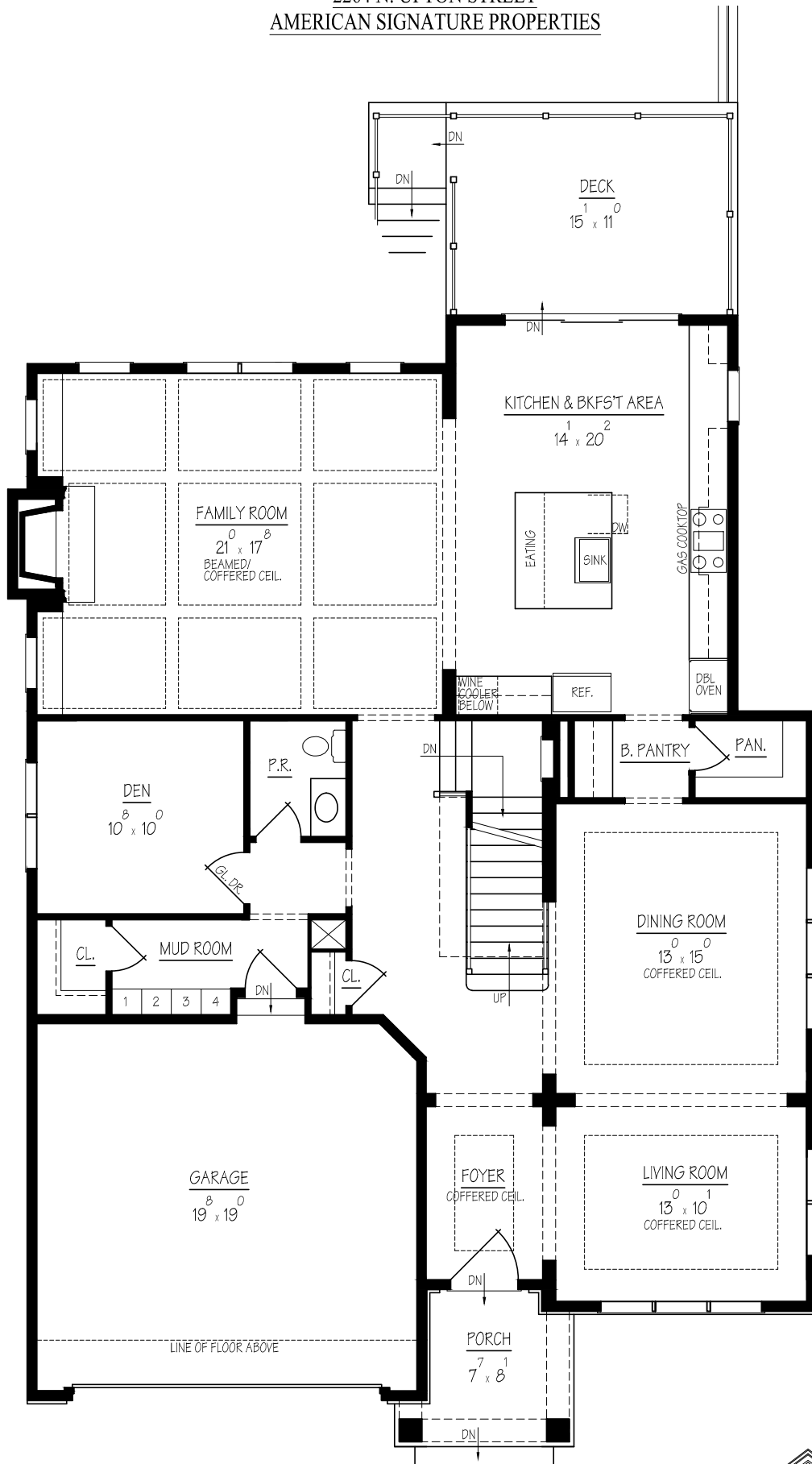


**BASEMENT FLOOR PLAN**  
1353 SQ. FT. FINISHED  
219 SQ. FT. UNFINISHED  
RENDERING ONLY: DIMENSIONS MAY VARY



**CLAUDE C. LAPP**  
— ARCHITECTS LLC —  
301-881-6856

2264 N. UPTON STREET  
 AMERICAN SIGNATURE PROPERTIES



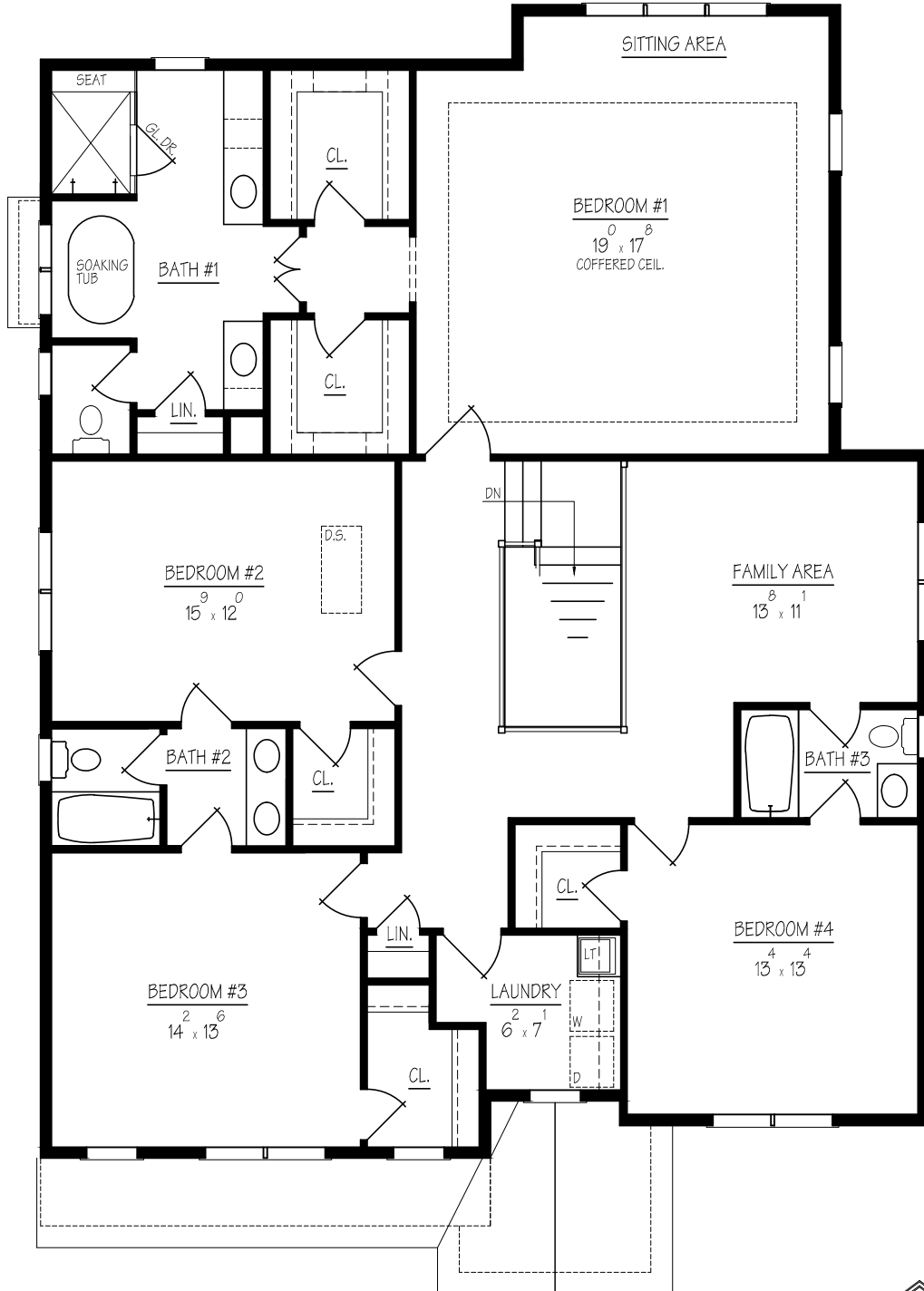
FIRST FLOOR PLAN

1661 SQ. FT. MAIN  
 399 SQ. FT. GARAGE  
 64 SQ. FT. FRONT PORCH  
 166 SQ. FT. DECK  
 RENDERING ONLY: DIMENSIONS MAY VARY



**CLAUDE C. LAPP**  
 — ARCHITECTS LLC —  
 301-881-6856

2264 N. UPTON STREET  
AMERICAN SIGNATURE PROPERTIES



SECOND FLOOR PLAN  
1990 SQ. FT. MAIN  
RENDERING ONLY: DIMENSIONS MAY VARY



**CLAUDE C. LAPP**  
— ARCHITECTS LLC —  
301-881-6856

2264 N. UPTON STREET  
AMERICAN SIGNATURE PROPERTIES



FRONT ELEVATION  
RENDERING ONLY: ELEVATION MAY VARY



**CLAUDE C. LAPP**  
— ARCHITECTS LLC —  
301-881-6856