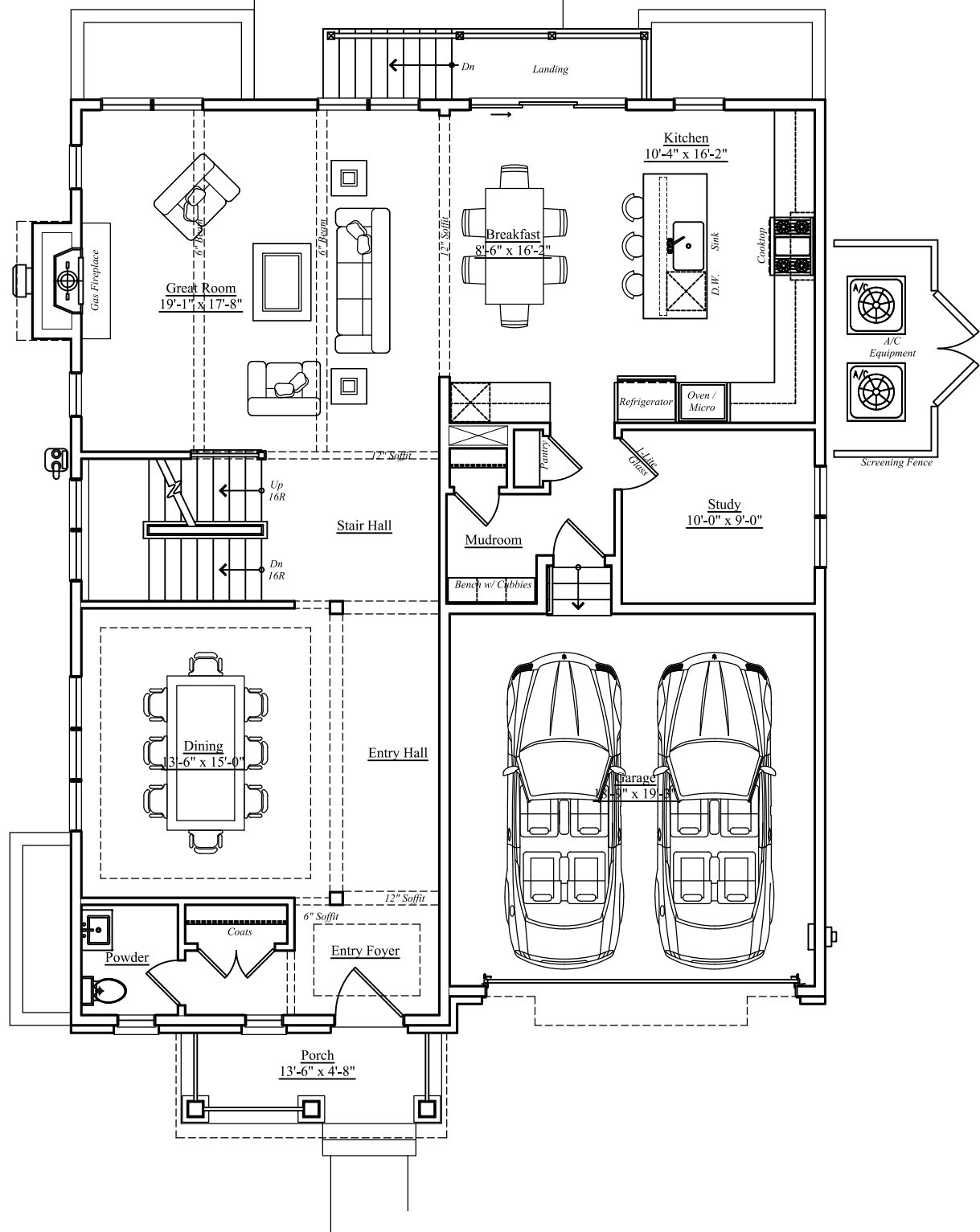


2119 North Harrison St.
Arlington, VA



First Floor

Finished Area Above Grade: 1,461 sq.ft.

Garage: 401 sq. ft.

Landing: 37 sq.ft., Porch: 63 sq. ft.

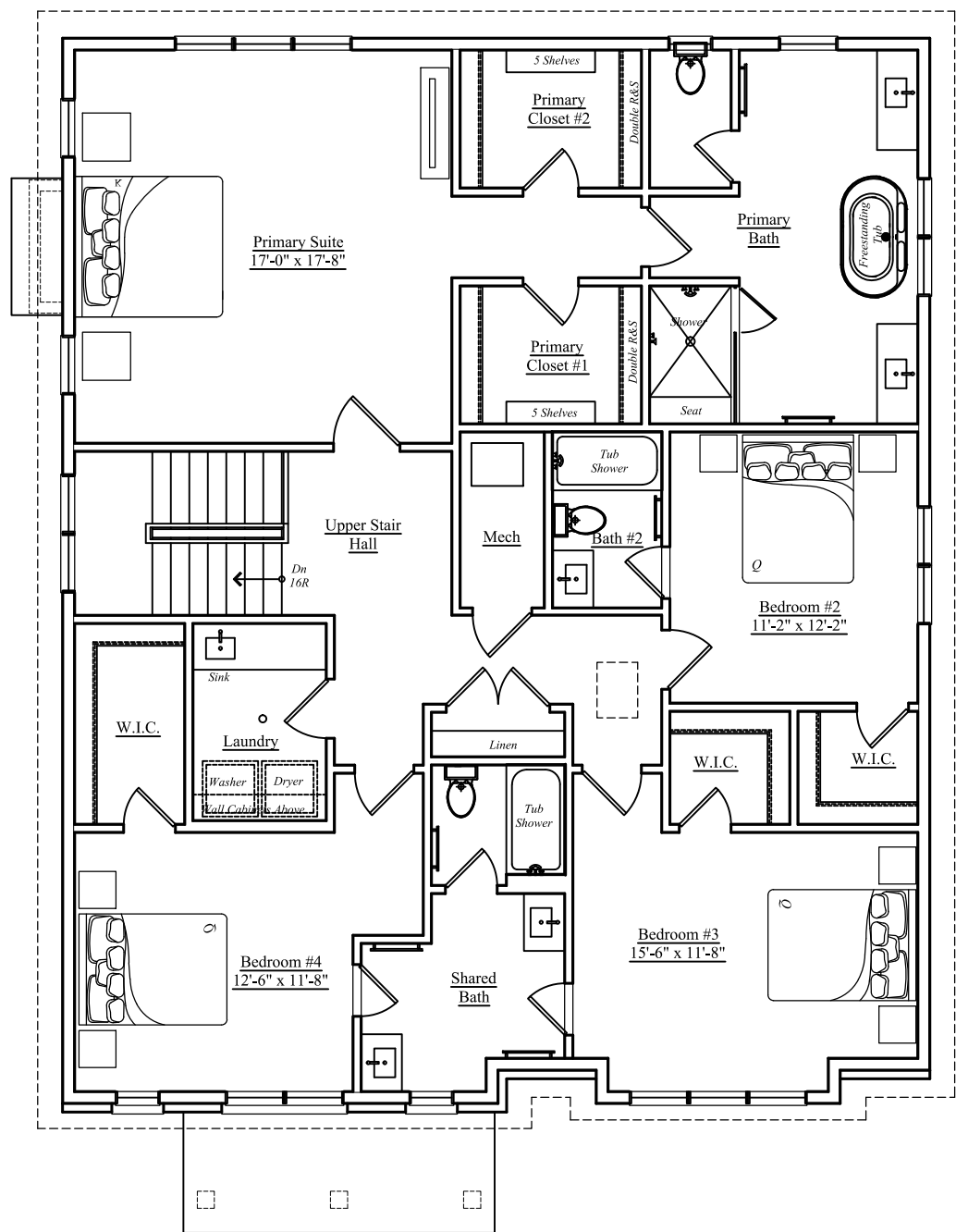
Finished square footage calculations for this house were made based on plan dimensions only and may vary from the finished square footage of the house as built. Areas calculated per the American National Standard For Single-Family Residential Buildings, Approved June 2013: ANSI Z765-2013
Note: Stormwater Planter Design subject to change.



03/19/2025

W
WORMALD

2119 North Harrison St.
Arlington, VA



Second Floor

Finished Area Above Grade: 1,874 sq.ft.

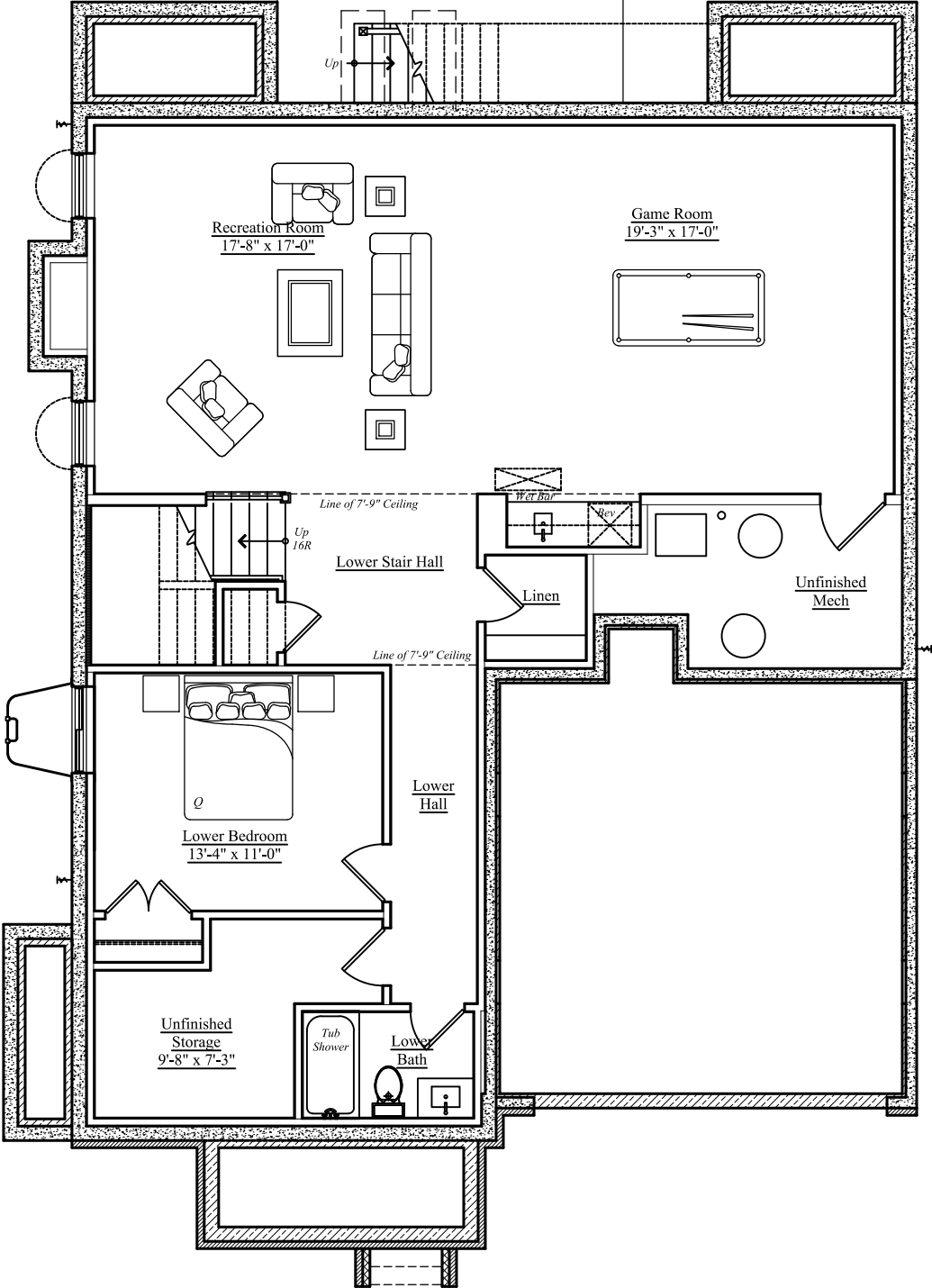
Finished square footage calculations for this house were made based on plan dimensions only and may vary from the finished square footage of the house as built. Areas calculated per the American National Standard For Single-Family Residential Buildings, Approved June 2013: ANSI Z765-2013
Note: Stormwater Planter Design subject to change.



03/19/2025



2119 North Harrison St.
Arlington, VA



Basement Level

Finished Area Below Grade: 1,245 sq.ft.
Unfinished Area Below Grade: 220 sq. ft.

Finished square footage calculations for this house were made based on plan dimensions only and may vary from the finished square footage of the house as built. Areas calculated per the American National Standard For Single-Family Residential Buildings, Approved June 2013: ANSI Z765-2013
Note: Stormwater Planter Design subject to change.



03/19/2025



2119 North Harrison St.
Arlington, VA



Front Elevation

Finished square footage calculations for this house were made based on plan dimensions only and may vary from the finished square footage of the house as built. Areas calculated per the American National Standard For Single-Family Residential Buildings, Approved June 2013: ANSI Z765-2013
Note: Stormwater Planter Design subject to change.



03/19/2025

W
WORMALD

2119 North Harrison St.
Arlington, VA



Left Elevation

Finished square footage calculations for this house were made based on plan dimensions only and may vary from the finished square footage of the house as built. Areas calculated per the American National Standard For Single-Family Residential Buildings, Approved June 2013: ANSI Z765-2013
Note: Stormwater Planter Design subject to change.



03/19/2025



2119 North Harrison St.
Arlington, VA



Rear Elevation

Finished square footage calculations for this house were made based on plan dimensions only and may vary from the finished square footage of the house as built. Areas calculated per the American National Standard For Single-Family Residential Buildings, Approved June 2013: ANSI Z765-2013
Note: Stormwater Planter Design subject to change.



03/19/2025



2119 North Harrison St.
Arlington, VA



Right Elevation

Finished square footage calculations for this house were made based on plan dimensions only and may vary from the finished square footage of the house as built. Areas calculated per the American National Standard For Single-Family Residential Buildings, Approved June 2013: ANSI Z765-2013
Note: Stormwater Planter Design subject to change.



03/19/2025

