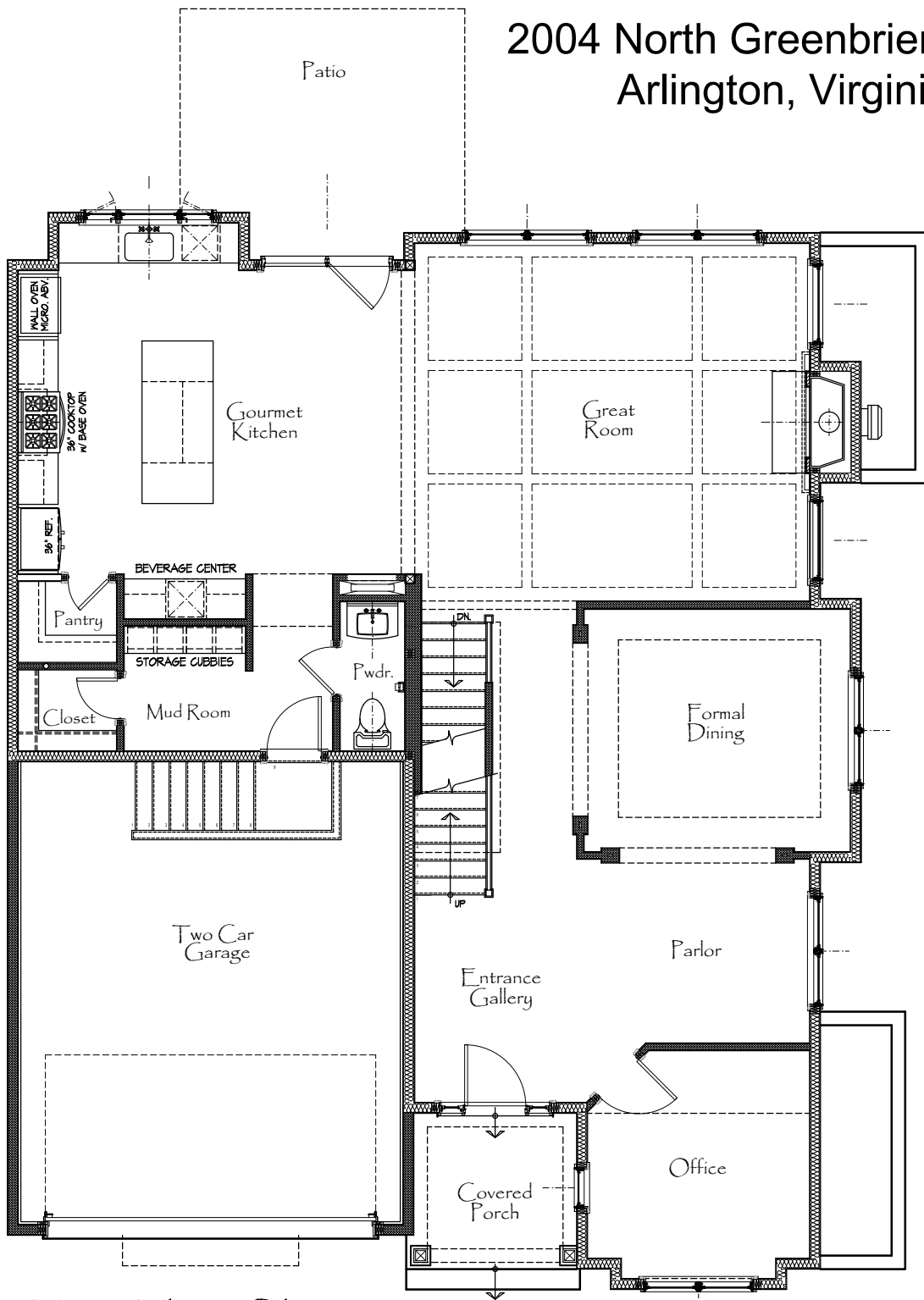


2004 North Greenbrier Street
Arlington, Virginia



First Floor Plan

1,541.78 SQ. FT. - LIVING SPACE
392 SQ. FT. - GARAGE
160 SQ. FT. - REAR PATIO

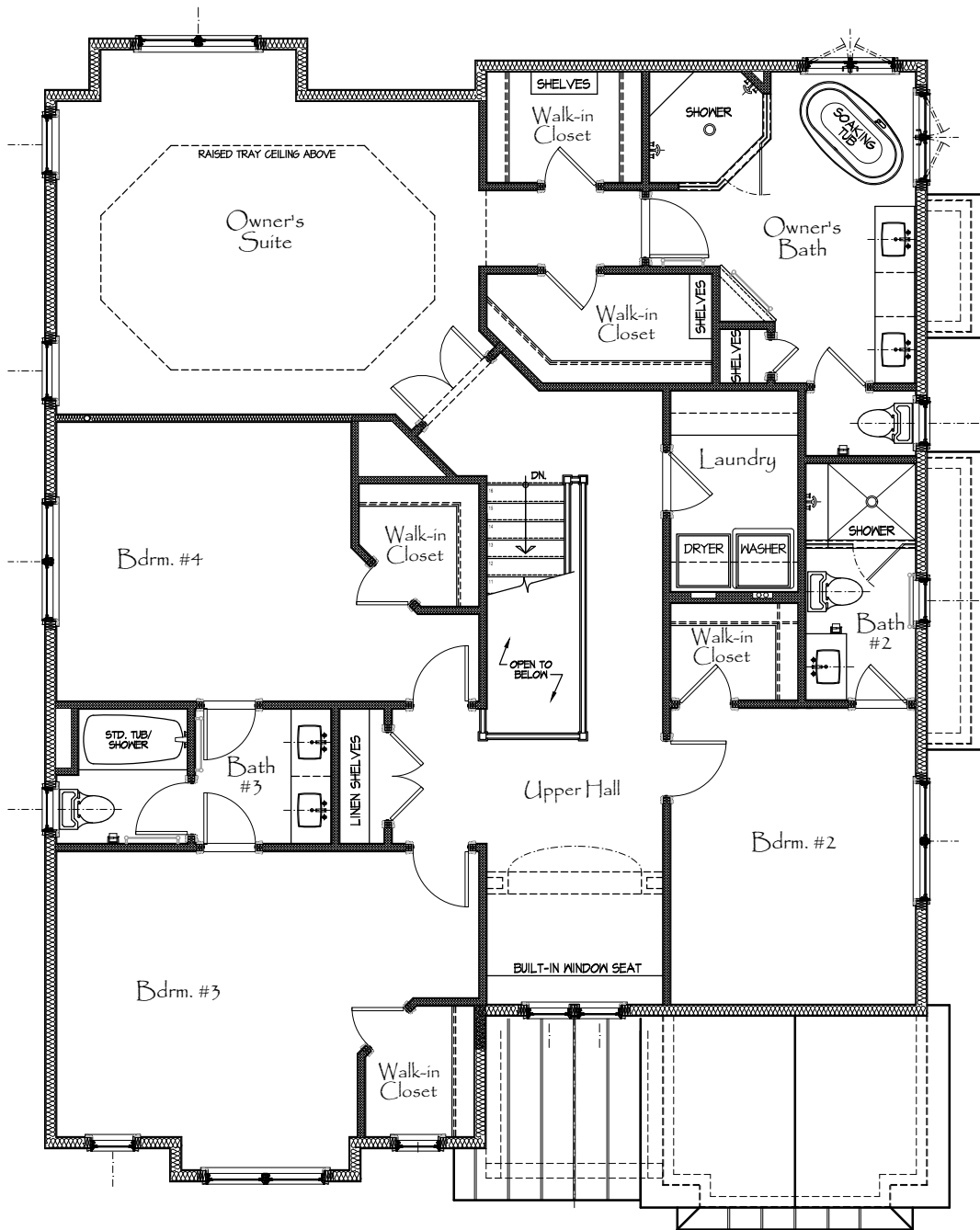


5/21/2018

Design and details are the exclusive property of Wormald Homes, Inc. Unauthorized use is strictly prohibited. Actual product and specifications may vary in dimension or detail from these drawings and are subject to change without notice. Window and door locations vary per elevation. MHR No. 3514

W
W O R M A L D

2004 North Greenbrier Street
Arlington, Virginia



Second Floor Plan

1,779 SQ. FT. - LIVING SPACE

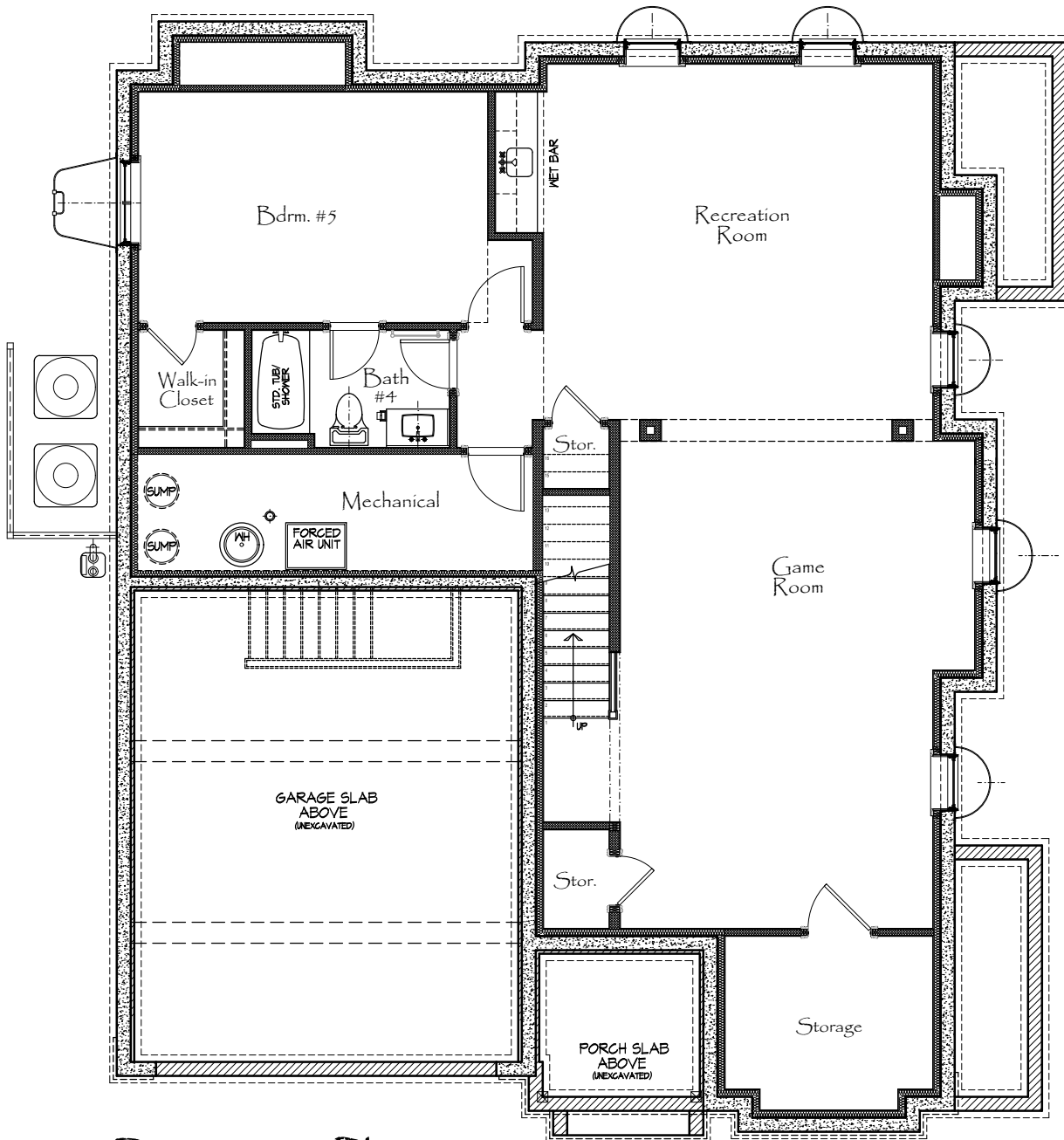


5/21/2018

Design and details are the exclusive property of Wormald Homes, Inc. Unauthorized use is strictly prohibited. Actual product and specifications may vary in dimension or detail from these drawings and are subject to change without notice. Window and door locations vary per elevation. MHBR No. 3514

W
W O R M A L D

2004 North Greenbrier Street
Arlington, Virginia



Basement Plan

1,278 SQ. FT. - LIVING SPACE (FINISHED)
135 SQ. FT. - LIVING SPACE (UNFINISHED)



5/21/2018

Design and details are the exclusive property of Wormald Homes, Inc. Unauthorized use is strictly prohibited. Actual product and specifications may vary in dimension or detail from these drawings and are subject to change without notice. Window and door locations vary per elevation. MHBR No. 3514

W
W O R M A L D

2004 North Greenbrier Street
Arlington, Virginia



5/21/2018

Design and details are the exclusive property of Wormald Homes, Inc. Unauthorized use is strictly prohibited. Actual product and specifications may vary in dimension or detail from these drawings and are subject to change without notice. Window and door locations vary per elevation. MHBR No. 3514

W
W O R M A L D