

9130 KIRKDALE ROAD
A SIGNATURE PROPERTY
BY

W
W O R M A L D



FRONT ELEVATION

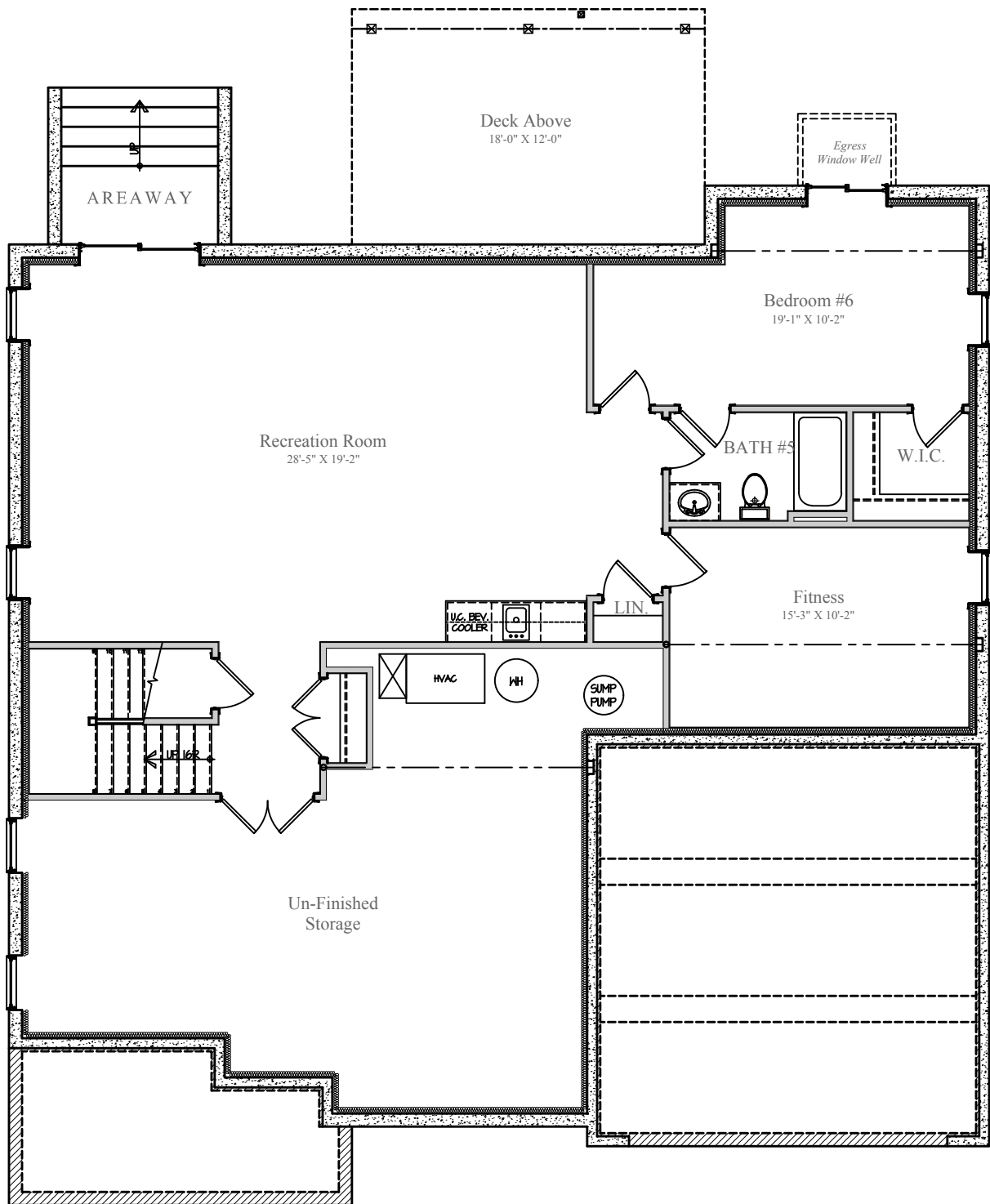


11/4/2018

Design and details are the exclusive property of Wormald Homes, Inc. Unauthorized use is strictly prohibited. Actual product and specifications may vary in dimension or detail from these drawings and are subject to change without notice. Window and door locations vary per elevation. MHBR No. 3514

DESIGN BY:
W
W O R M A L D

9130 KIRKDALE ROAD



LOWER LEVEL

FINISHED AREA: 1,285 sq.ft.

UN-FINIHSED: 565 sq. ft.

DIMENSIONS MAY VARY

DESIGN BY:

W

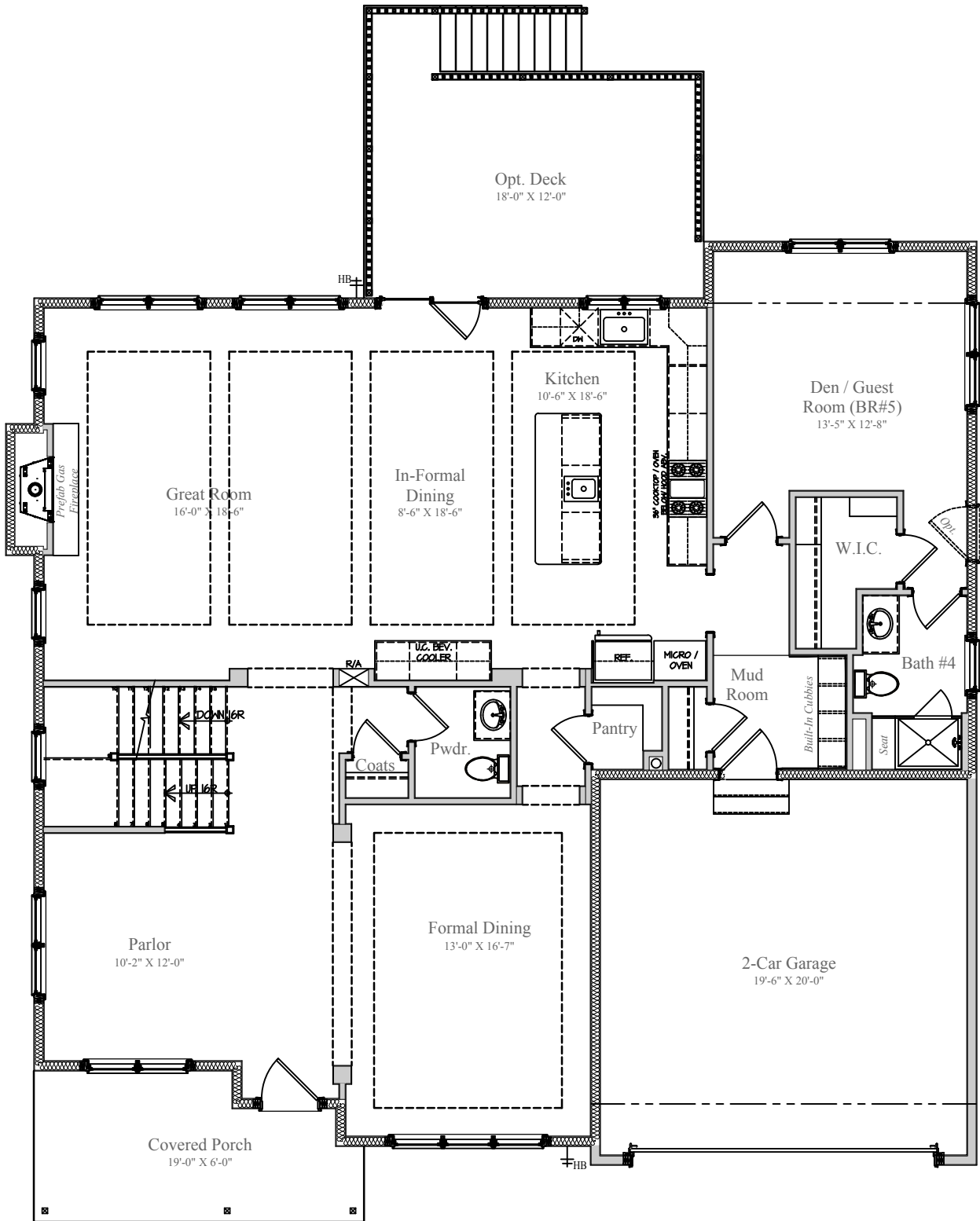
WORMALD



11/4/2018

Design and details are the exclusive property of Wormald Homes, Inc. Unauthorized use is strictly prohibited. Actual product and specifications may vary in dimension or detail from these drawings and are subject to change without notice. Window and door locations vary per elevation. MHBR No. 3514

9130 KIRKDALE ROAD



MAIN LEVEL

FINISHED AREA: 1,851 sq.ft.

GARAGE: 410 sq. ft.

COVERED PORCH: 123 sq. ft.

DIMENSIONS MAY VARY

DESIGN BY:



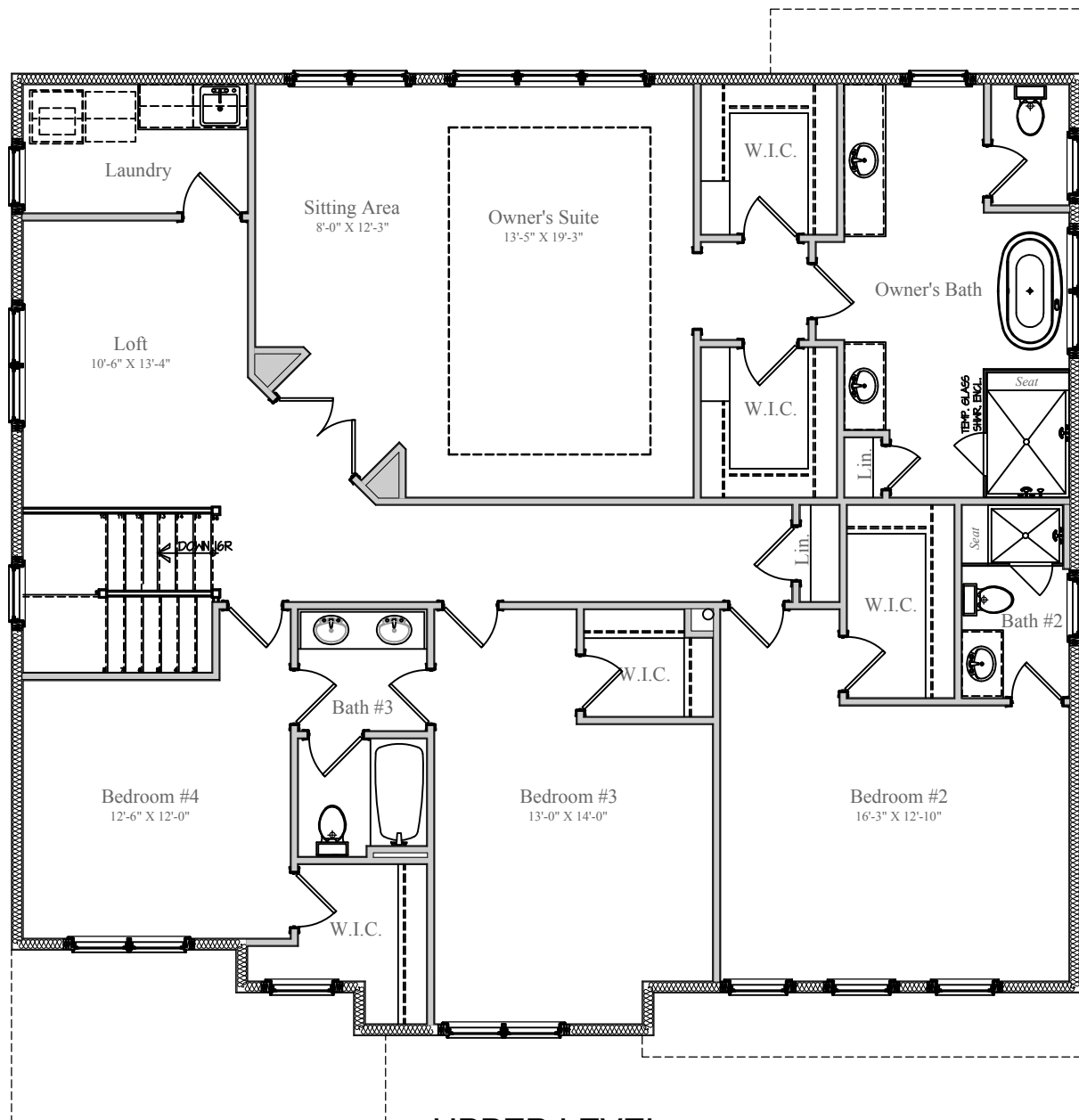
WORMALD



11/4/2018

Design and details are the exclusive property of Wormald Homes, Inc. Unauthorized use is strictly prohibited. Actual product and specifications may vary in dimension or detail from these drawings and are subject to change without notice. Window and door locations vary per elevation. MHBR No. 3514

9130 KIRKDALE ROAD



UPPER LEVEL
FINISHED AREA: 2,084 sq. ft.
DIMENSIONS MAY VARY

DESIGN BY:



11/4/2018

Design and details are the exclusive property of Wormald Homes, Inc. Unauthorized use is strictly prohibited. Actual product and specifications may vary in dimension or detail from these drawings and are subject to change without notice. Window and door locations vary per elevation. MHBR No. 3514

W
WORMALD