

1300 N. QUINTANA STREET  
A SIGNATURE PROPERTY

BY

W

W O R M A L D



FRONT ELEVATION

DESIGN BY:

W

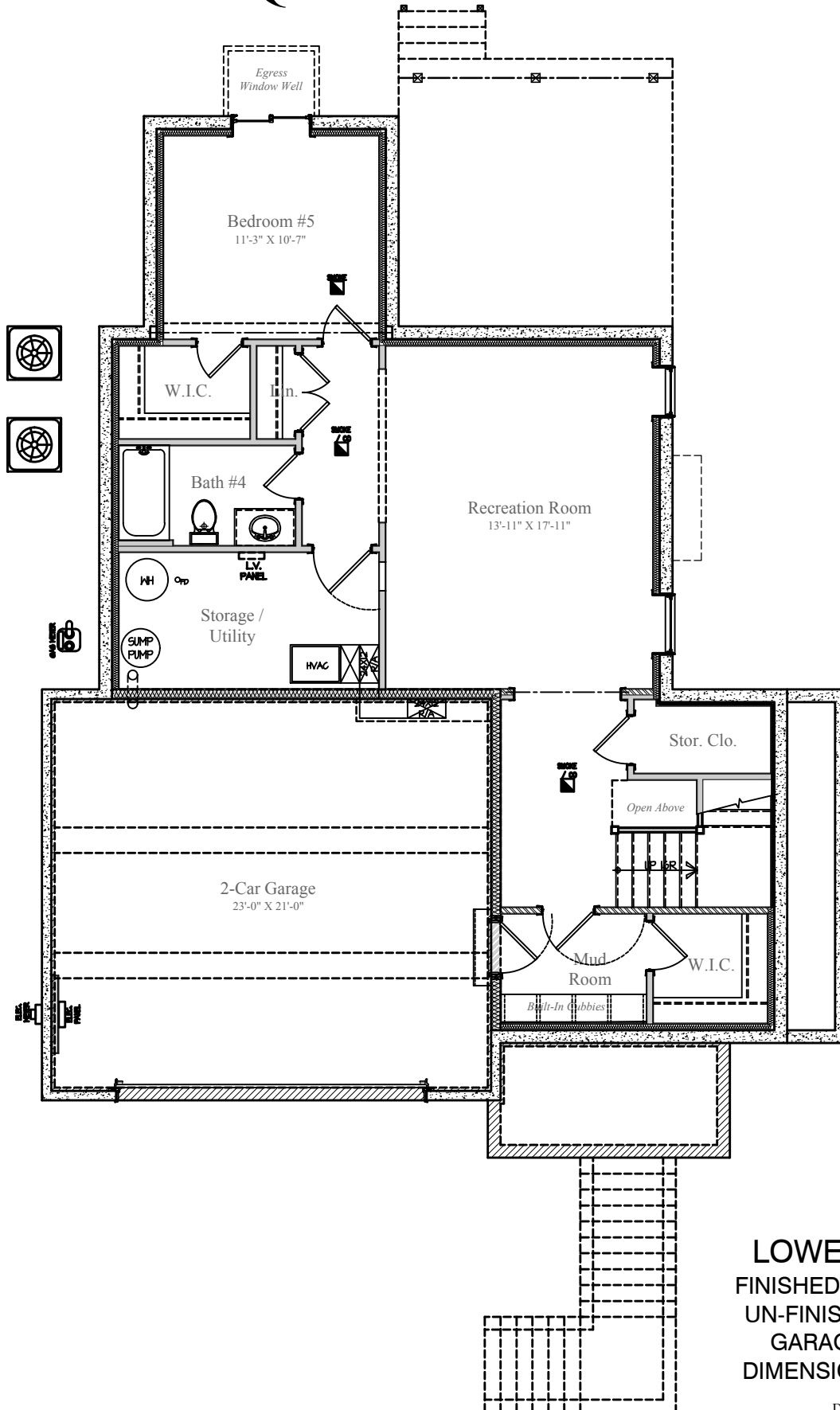
W O R M A L D



9/3/2023

Design and details are the exclusive property of Wormald Homes, Inc. Unauthorized use is strictly prohibited. Actual product and specifications may vary in dimension or detail from these drawings and are subject to change without notice. Window and door locations vary per elevation. MHBR No. 3514

# 1300 N. QUINTANA STREET



**LOWER LEVEL**  
 FINISHED AREA: 896 sq. ft.  
 UN-FINISHED: 105 sq. ft.  
 GARAGE: 507 sq. ft.  
 DIMENSIONS MAY VARY

DESIGN BY:



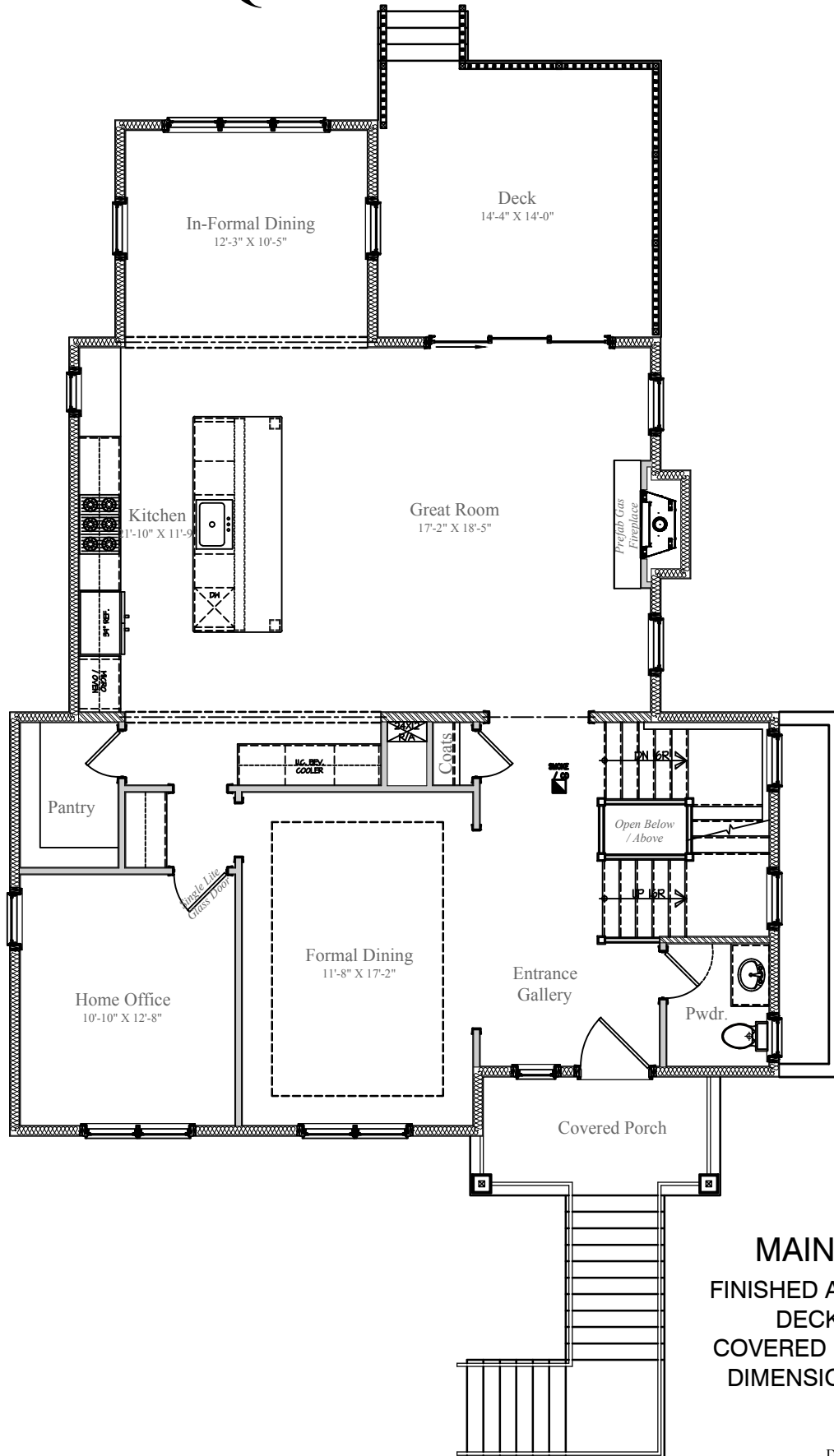
**WORMALD**



9/3/2023

Design and details are the exclusive property of Wormald Homes, Inc. Unauthorized use is strictly prohibited. Actual product and specifications may vary in dimension or detail from these drawings and are subject to change without notice. Window and door locations vary per elevation. MHBR No. 3514

# 1300 N. QUINTANA STREET



## MAIN LEVEL

FINISHED AREA: 1,518 sq.ft.

DECK: 200 sq.ft.

COVERED PORCH: 74 sq.ft.

DIMENSIONS MAY VARY

DESIGN BY:

**W**

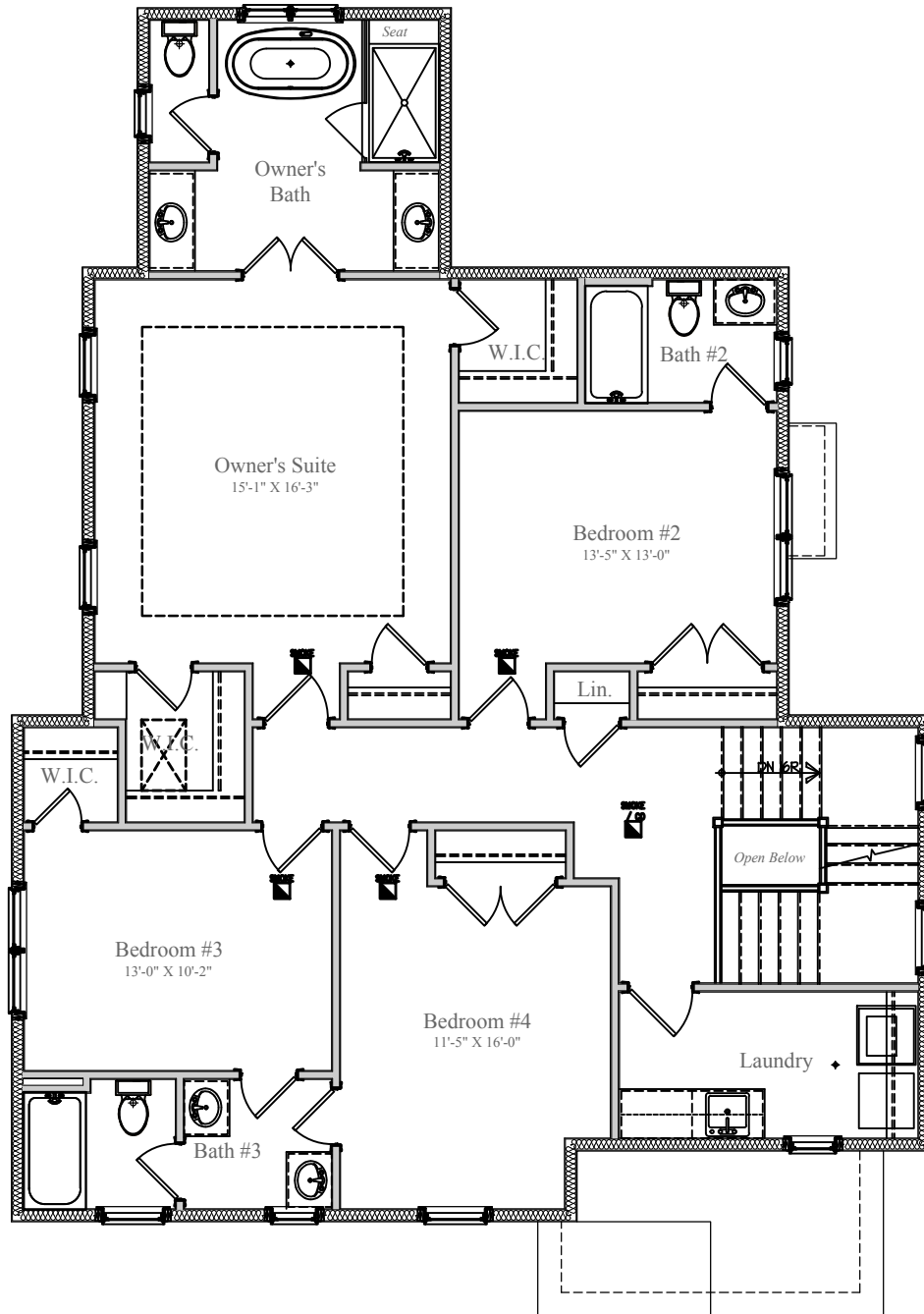
**WORMALD**



9/3/2023

Design and details are the exclusive property of Wormald Homes, Inc. Unauthorized use is strictly prohibited. Actual product and specifications may vary in dimension or detail from these drawings and are subject to change without notice. Window and door locations vary per elevation. MHBR No. 3514

# 1300 N. QUINTANA STREET



**UPPER LEVEL**  
FINISHED AREA: 1,411 sq. ft.  
DIMENSIONS MAY VARY

DESIGN BY:

**W**

**WORMALD**



9/3/2023

Design and details are the exclusive property of Wormald Homes, Inc. Unauthorized use is strictly prohibited. Actual product and specifications may vary in dimension or detail from these drawings and are subject to change without notice. Window and door locations vary per elevation. MHBR No. 3514