

W

W O R M A L D

Sales by Dean Yeonas
with Yeonas & Shafran Real Estate
Cell: 703.216.8552
Email: dean@yeonas.com

www.wormald.com/ASP
LOVE WHERE YOU LIVE



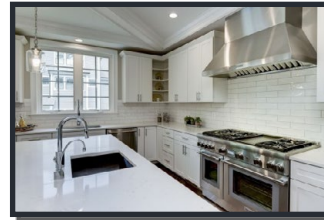
Signature Properties
By Wormald

1168 Randolph Road
McLean, VA 22101

GENERAL FEATURES

- ◆ Constructed by The Wormald Companies with a Commitment to Excellence & a Full Warranty Program.
- ◆ 6,353 Square Foot Lot.
- ◆ Approximately 3,792 Finished SF.
- ◆ Covered Front Porch & Rear Patio.
- ◆ 2-Car Garage with Adjacent Mud Room with Built in Cubbies.
- ◆ 5 Bedrooms, 4 Full Baths, Main Level Powder Room.
- ◆ Main Level Contains Home Office, Formal Dining Room, Great Room with Tray Ceilings, Gas Fireplace, Open Concept Kitchen & Family Dining.
- ◆ Gourmet Kitchen with Quartz Countertops & Bosch Stainless Steel Appliances.
- ◆ Grand Primary Suite with Tray Ceiling, Dual Walk-in Closets & Luxurious Primary Bath.
- ◆ Finished Lower Level with Rec Room, Wet Bar, 5th Bedroom, Full Bath & More!
- ◆ Walk to Parks, Dining and Shopping.

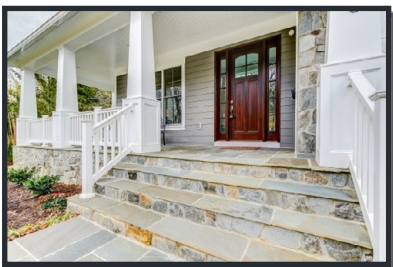
Please Note: Pictures below are a representation of previously built Signature Properties and are not of this property.



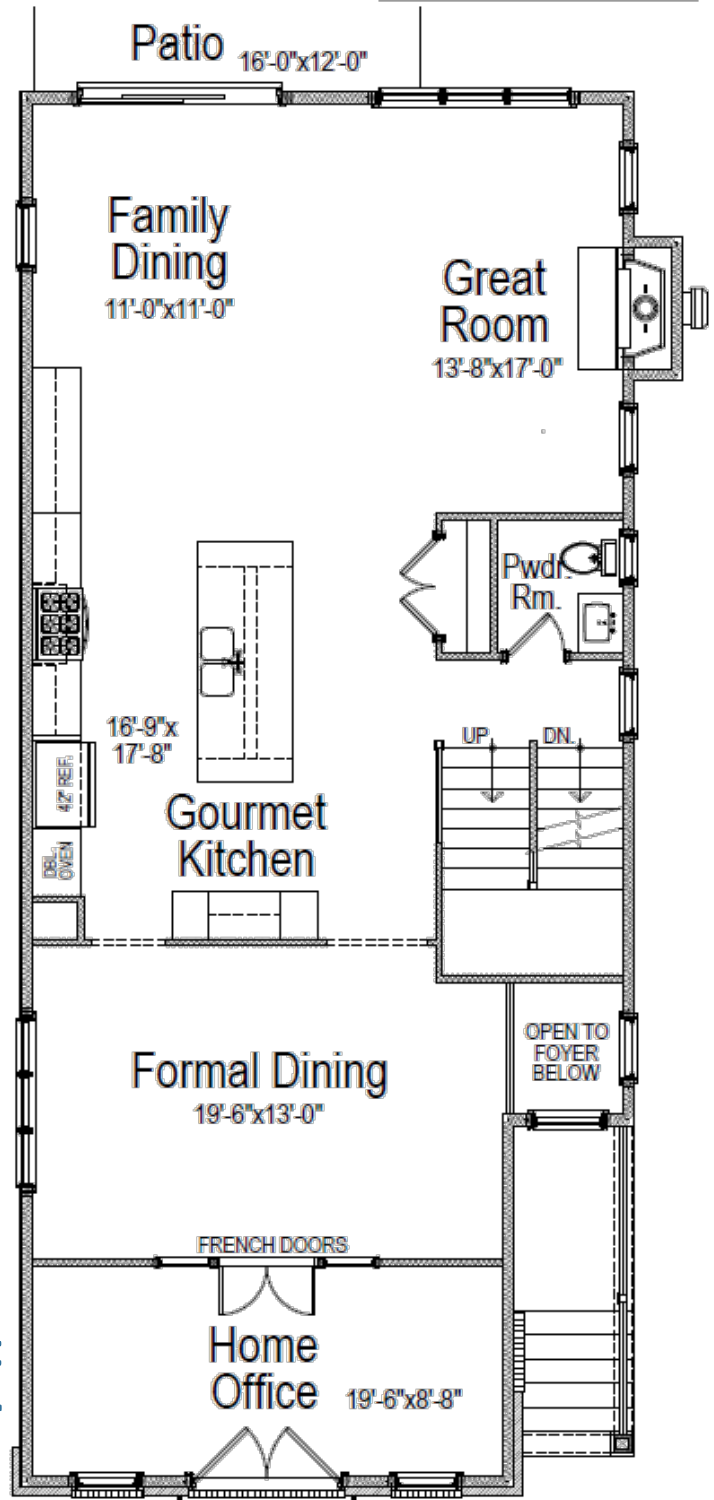
W
W O R M A L D

**WE PURCHASE HOMESITES.
WE BUILD ON YOUR LOT.**

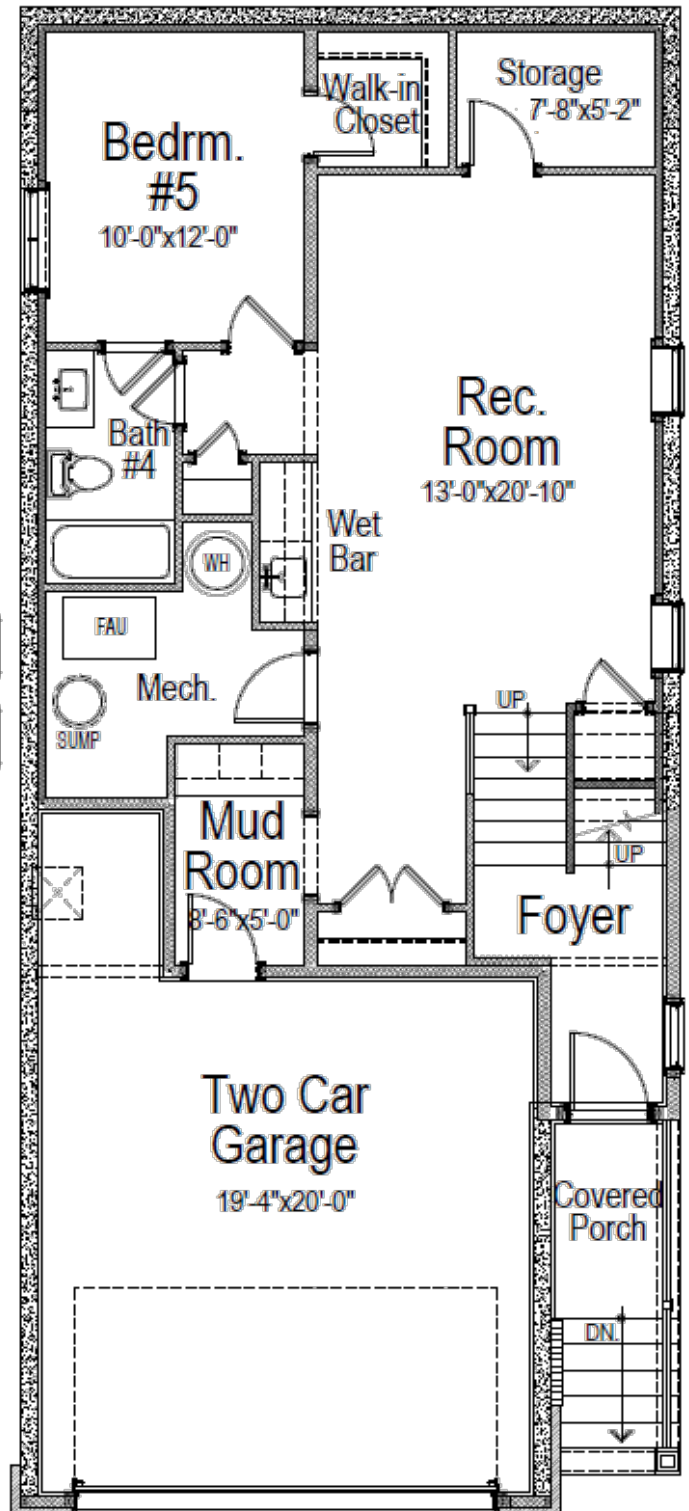
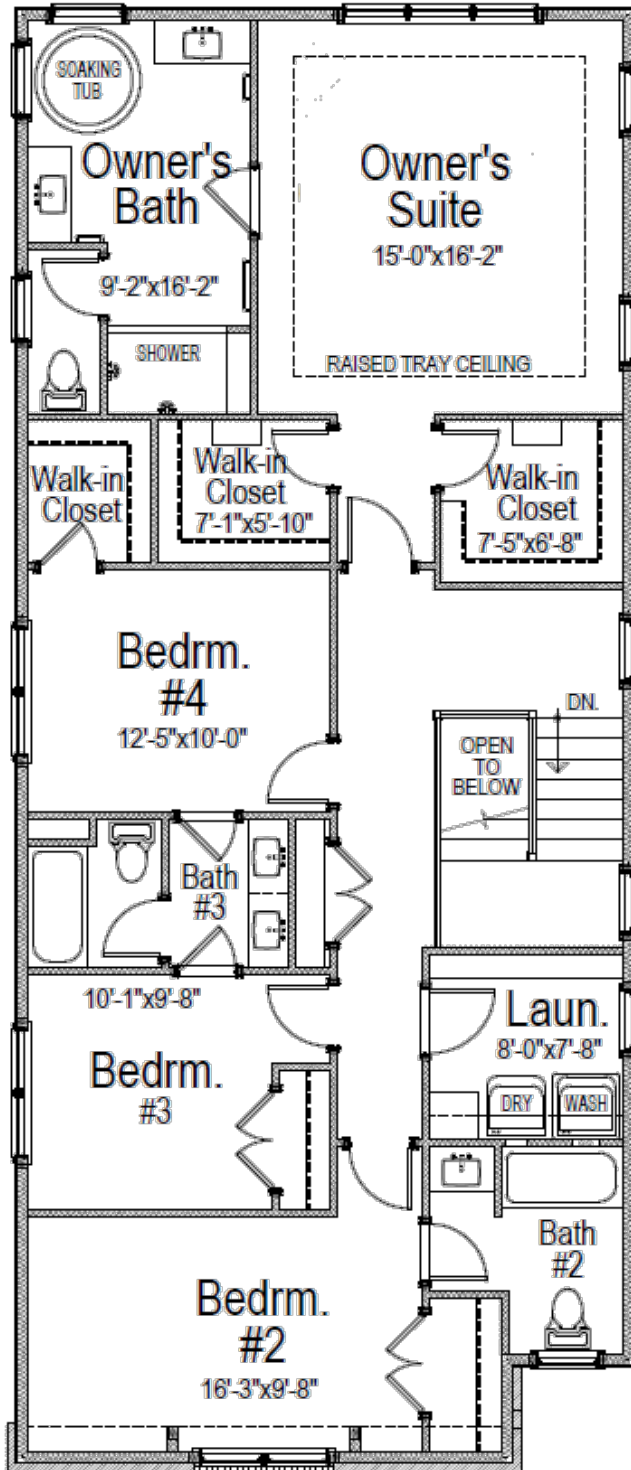
Contact: Vicki Favilla 240.405.1345 or
vicki.favilla@wormald.com



**First
Floor**



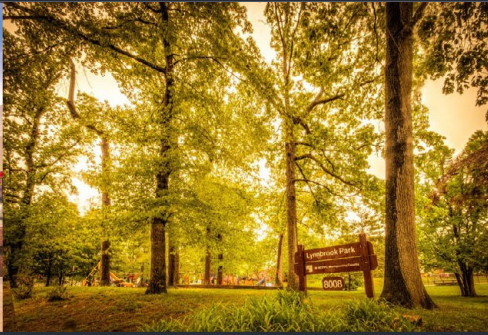
Second Floor



Lower Level

Wormald is the sixth generation D.C. Metropolitan area family with deep regional roots and generations of building experience. Arlington, Virginia native Bob Wormald founded Wormald Homes a half century ago in Potomac, Maryland. Wormald Homes success is built upon two strong pillars:

an uncommon spirited focus on unique signature designs that inspire the way we live, and a genuine passion for the details that make up a well-built home.



Signature Properties showcase a variety of beautiful, custom-designed homes with Wormald's signature architecture in hand-selected, high-end neighborhoods like Bethesda, Chevy Chase, Arlington and other close-in neighborhoods around the D.C. Beltway, featuring close proximity to upscale retail and highly reputable school districts.

We purchase homesites, and can also build on yours!



AVAILABLE HOMESITES IN VIRGINIA

Bryan Street, Arlington — Lyon Park Community

26th Road North, Arlington — Yorktown Community

20th Street North, Arlington — Waverly Hills Neighborhood

Kilgore Road, Falls Church - Pimmit Hills Neighborhood

AVAILABLE HOMESITES IN MARYLAND

Redwing Road, Bethesda — Woodburn Community

Chestnut Street, Bethesda — Rosedale Park Community

Edward Avenue, Bethesda — North Bethesda Grove Community

Bywood Lane, Bethesda - Glenbrook Village Neighborhood