

W WORMALD

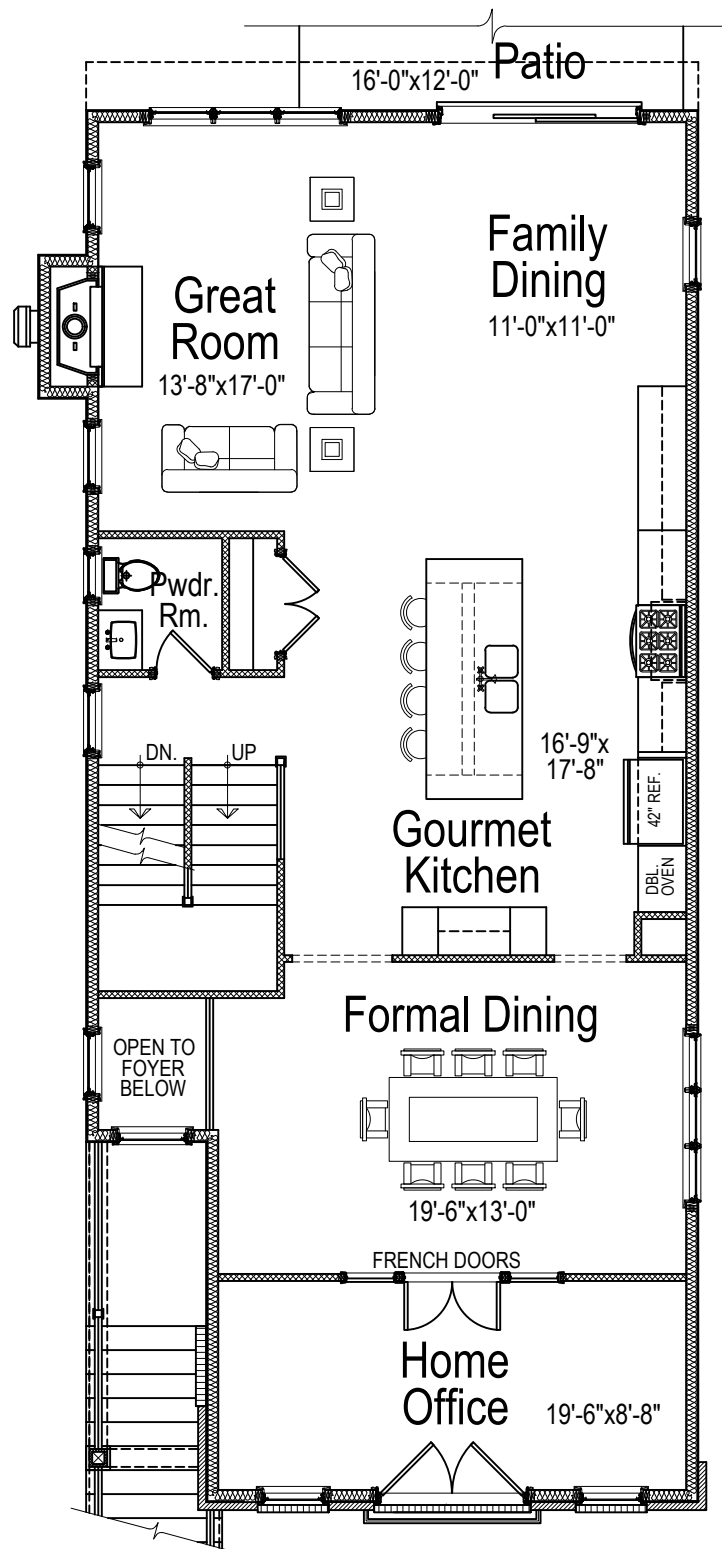
Concept Plan
Randolph Road
Lot 17-18
McLean, Virginia

FIRST FLOOR
Finished: 1,304 sq.ft.
Patio: 192 sq.ft.

Design and details are the exclusive property of Wormald Homes, Inc. Unauthorized use is strictly prohibited. Actual product and specifications may vary in dimension or detail from these drawings and are subject to change without notice. Window and door locations vary per elevation. MHBR No. 3514



7/16/2021

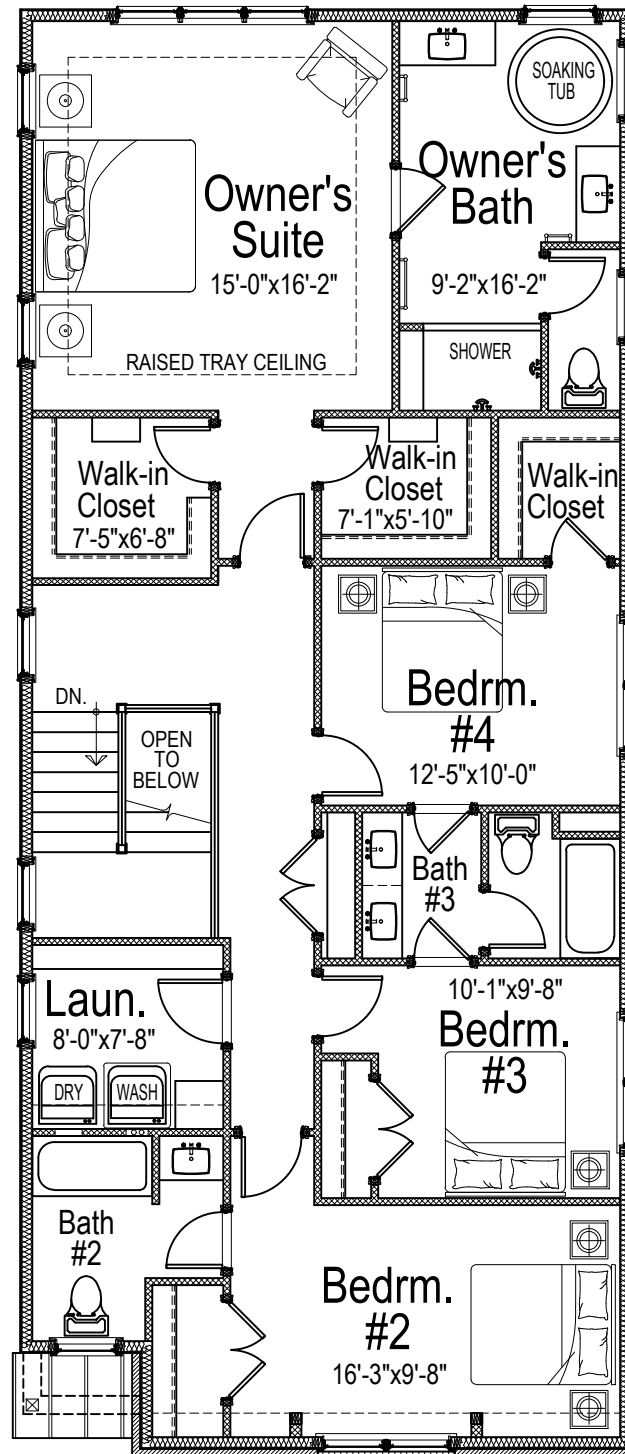


WORMALD

Concept Plan
 Randolph Road
 Lot 17-18
 McLean, Virginia

SECOND FLOOR
 Finished: 1,435 sq.ft.

Design and details are the exclusive property of Wormald Homes, Inc. Unauthorized use is strictly prohibited. Actual product and specifications may vary in dimension or detail from these drawings and are subject to change without notice. Window and door locations vary per elevation. MHBR No. 3514



7/16/2021

W WORMALD

Concept Plan
Randolph Road
Lot 17-18
McLean, Virginia

BASEMENT

Living: 950 sq.ft.
Front Porch: 38 sq.ft.
Garage: 454 sq.ft.

Design and details are the exclusive property of Wormald Homes, Inc. Unauthorized use is strictly prohibited. Actual product and specifications may vary in dimension or detail from these drawings and are subject to change without notice. Window and door locations vary per elevation. MHBR No. 3514



7/16/2021

