

10010 FLEMING AVE
A SIGNATURE PROPERTY
BY
W
W O R M A L D



FRONT ELEVATION



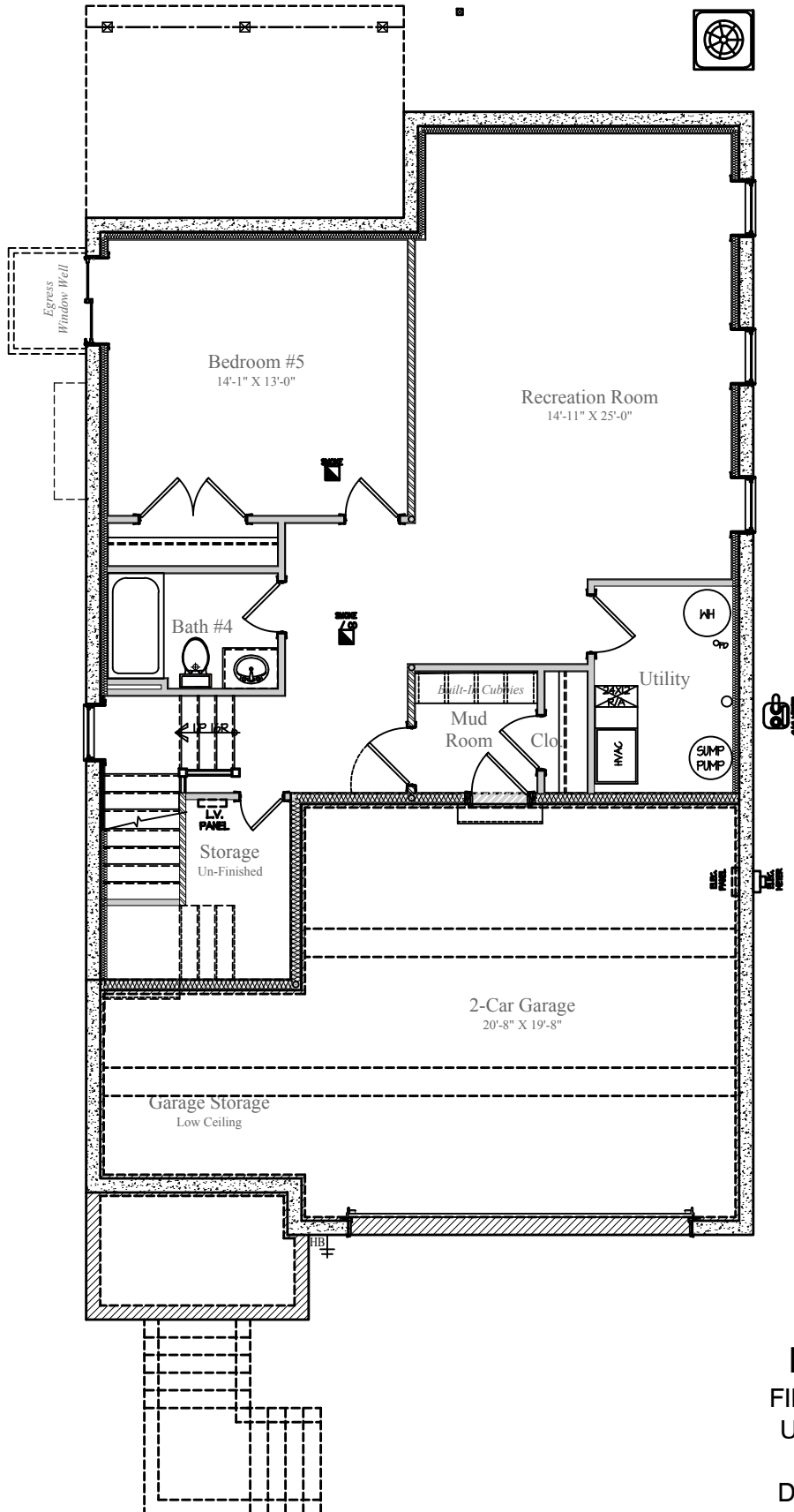
3/25/2023

Design and details are the exclusive property of Wormald Homes, Inc. Unauthorized use is strictly prohibited. Actual product and specifications may vary in dimension or detail from these drawings and are subject to change without notice. Window and door locations vary per elevation. MHBR No. 3514

DESIGN BY:

W
W O R M A L D

10010 FLEMING AVE.



LOWER LEVEL

FINISHED AREA: 907 sq.ft.

UN-FINISHED: 233 sq. ft.

GARAGE: 435 sq. ft.

DIMENSIONS MAY VARY

DESIGN BY:

W

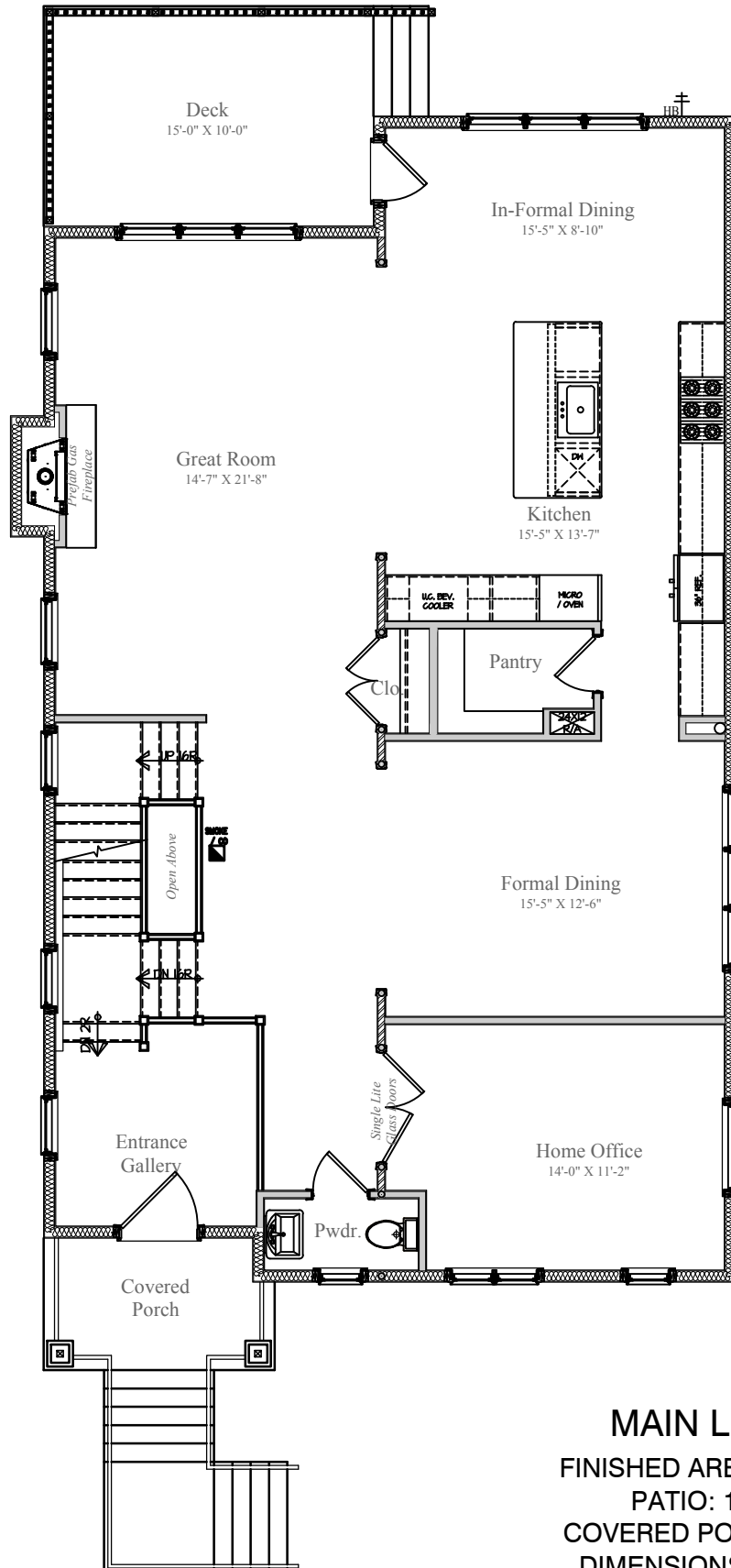
WORMALD



3/25/2023

Design and details are the exclusive property of Wormald Homes, Inc. Unauthorized use is strictly prohibited. Actual product and specifications may vary in dimension or detail from these drawings and are subject to change without notice. Window and door locations vary per elevation. MHBR No. 3514

10010 FLEMING AVE.



MAIN LEVEL

FINISHED AREA: 1,583 sq.ft.

PATIO: 150 sq.ft.

COVERED PORCH: 61 sq.ft.

DIMENSIONS MAY VARY

DESIGN BY:

W

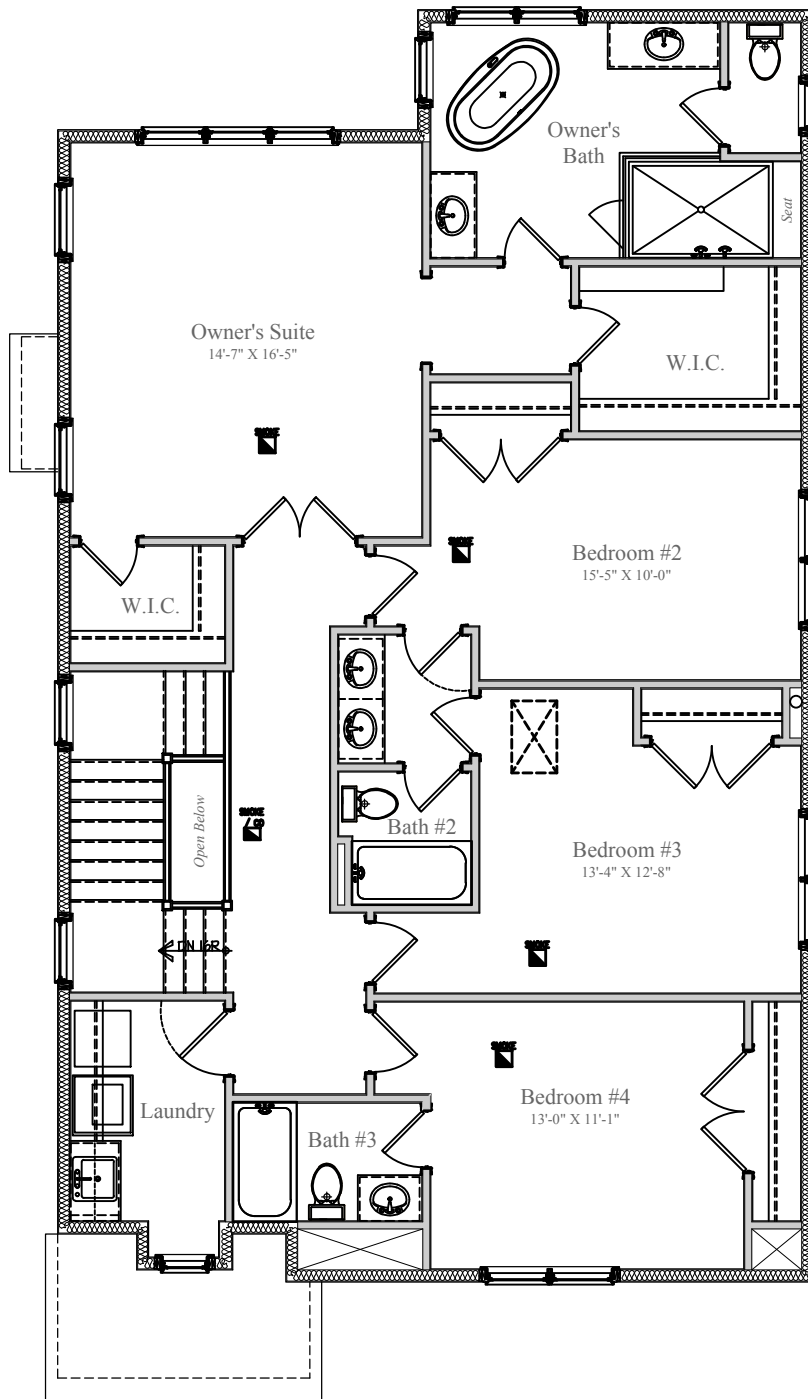
WORMALD



3/25/2023

Design and details are the exclusive property of Wormald Homes, Inc. Unauthorized use is strictly prohibited. Actual product and specifications may vary in dimension or detail from these drawings and are subject to change without notice. Window and door locations vary per elevation. MHBR No. 3514

10010 FLEMING AVE.



UPPER LEVEL

FINISHED AREA: 1,491 sq. ft.

DIMENSIONS MAY VARY

DESIGN BY:

W

WORMALD



3/25/2023

Design and details are the exclusive property of Wormald Homes, Inc. Unauthorized use is strictly prohibited. Actual product and specifications may vary in dimension or detail from these drawings and are subject to change without notice. Window and door locations vary per elevation. MHBR No. 3514