

THE WILLERSLEY

FROM APPROX. 1,900 SQ. FT.



Elevation II



Elevation I



Elevation III

THE LINKS AT GETTYSBURG The French Country Collection

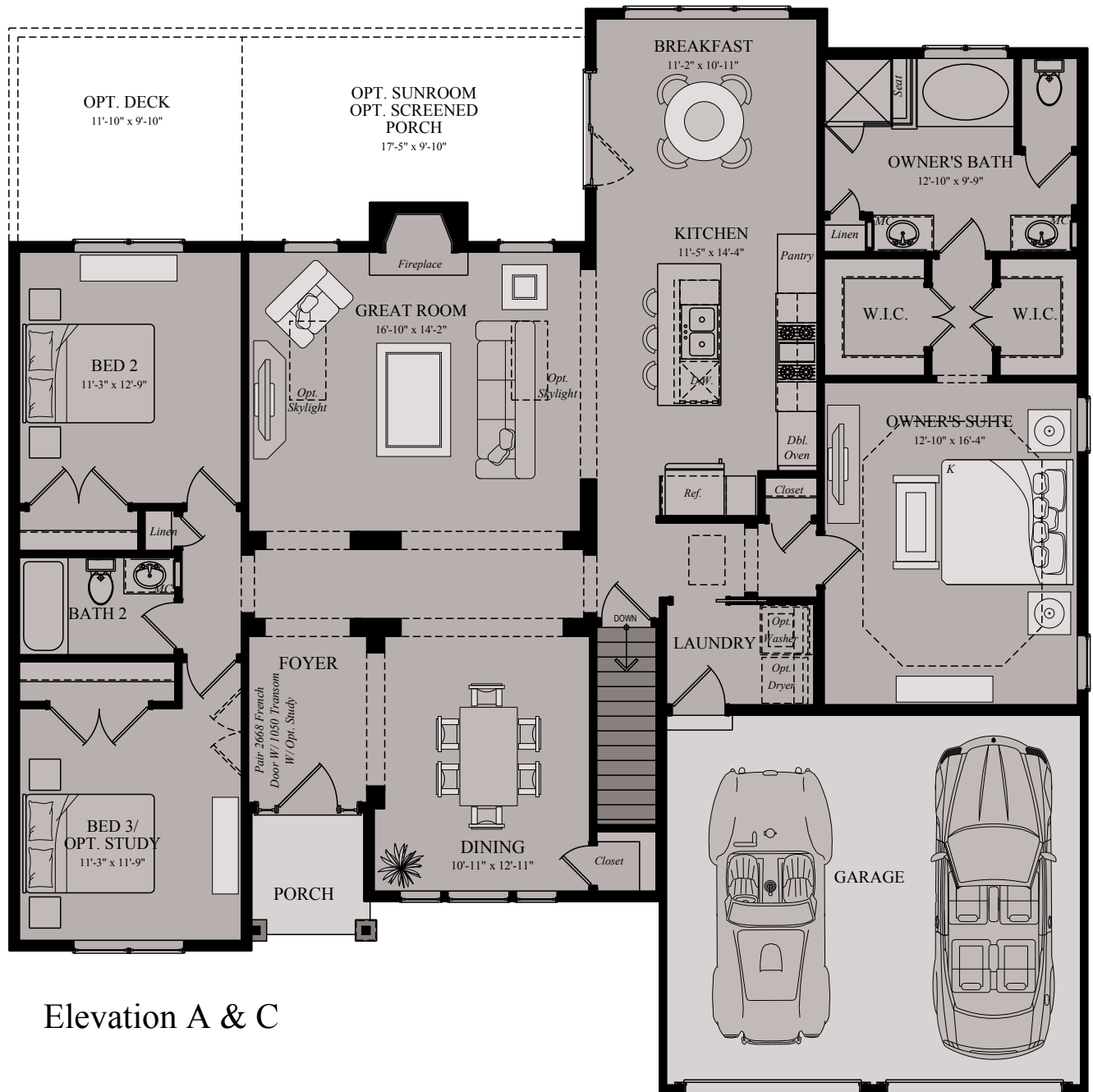
Cindy Van Meter, Sales Manager
717.359.8482 | Cindy.VanMeter@wormald.com
147 Savannah Drive, Gettysburg, PA 17325
Open Thursday - Monday 11 a.m. - 5 p.m.
or by appointment

W
WORMALD

Brokers welcome. Prices
are rounded and subject to
change without notice.



Willersley Main Floor



Elevation A & C



Elevation B



09/13/2018

WORMALD CORPORATION - ALL RIGHTS RESERVED

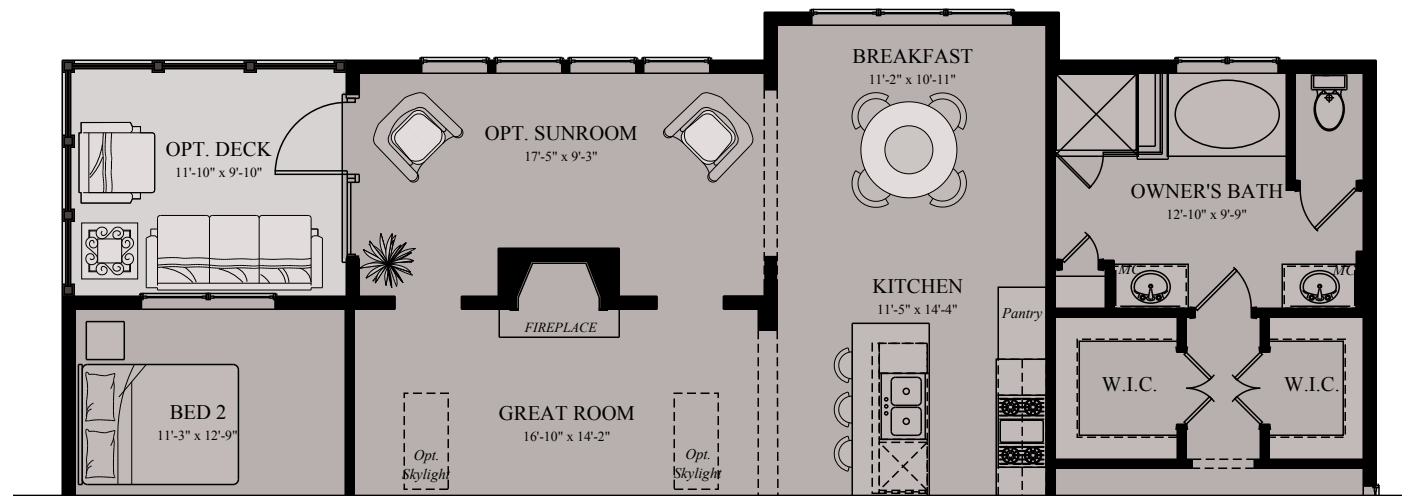
All ideas, designs, arrangements and plans indicated or represented by this drawing and written material appearing herein constitute the original and unpublished work of the Wormald corporation and may not be duplicated, used or disclosed to any person, firm or corporation for any purpose whatsoever without the written consent of the wormald corporation. Actual product and specifications may vary in dimension or detail from these drawings and are subject to change without notice. Window and door locations vary per elevation. MHBR No. 3514

W

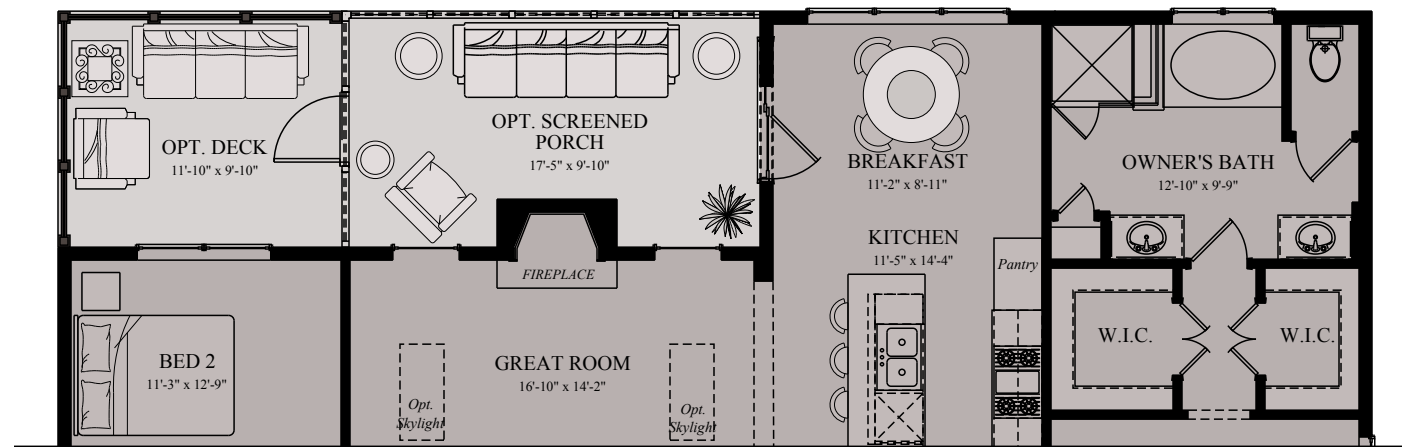
WORMALD

12-19-2018 2:59PM

Willersley Main Floor



Partial Plan Opt. Sunroom/Deck

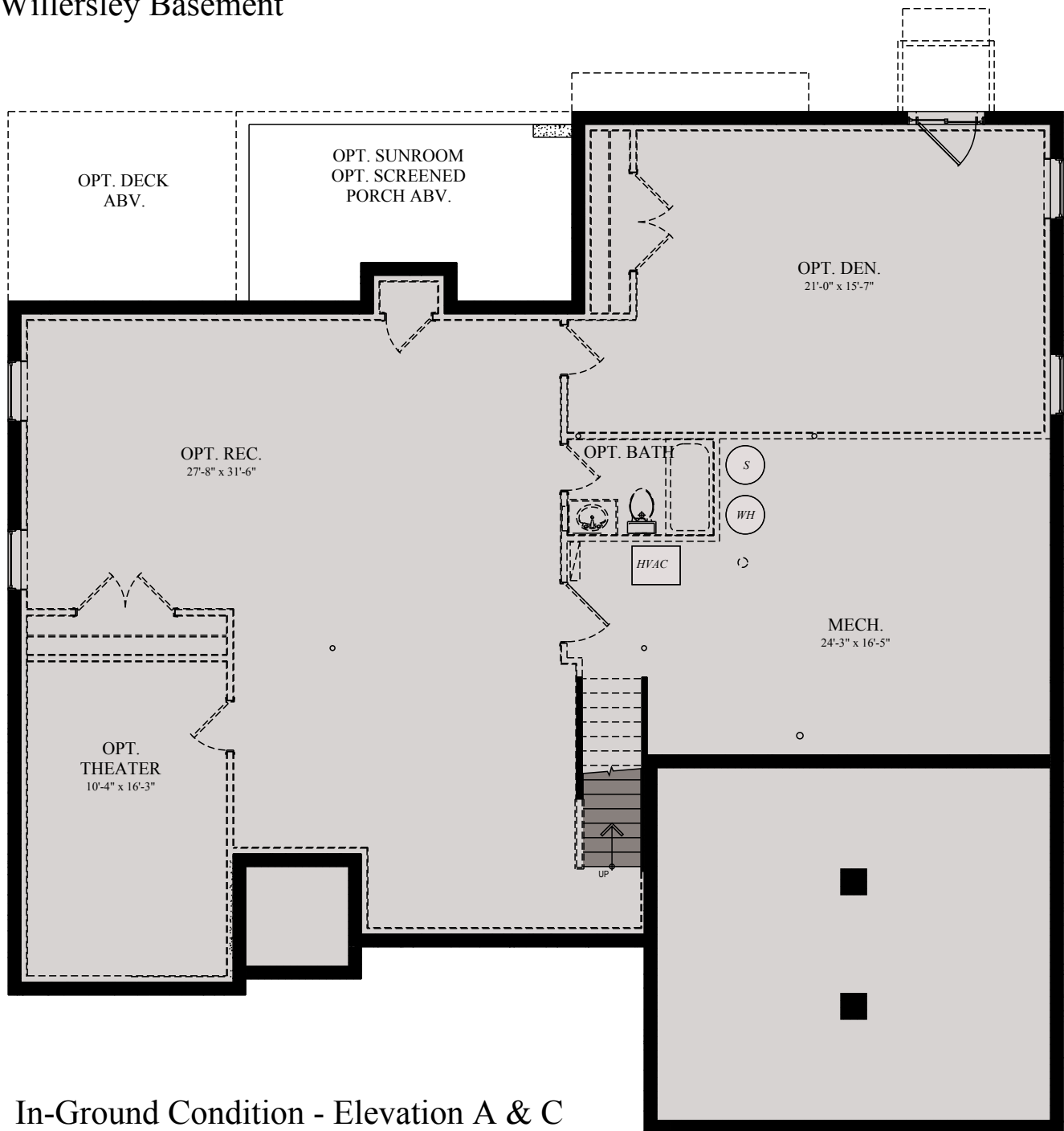


Partial Plan Opt. Screened Porch/Deck

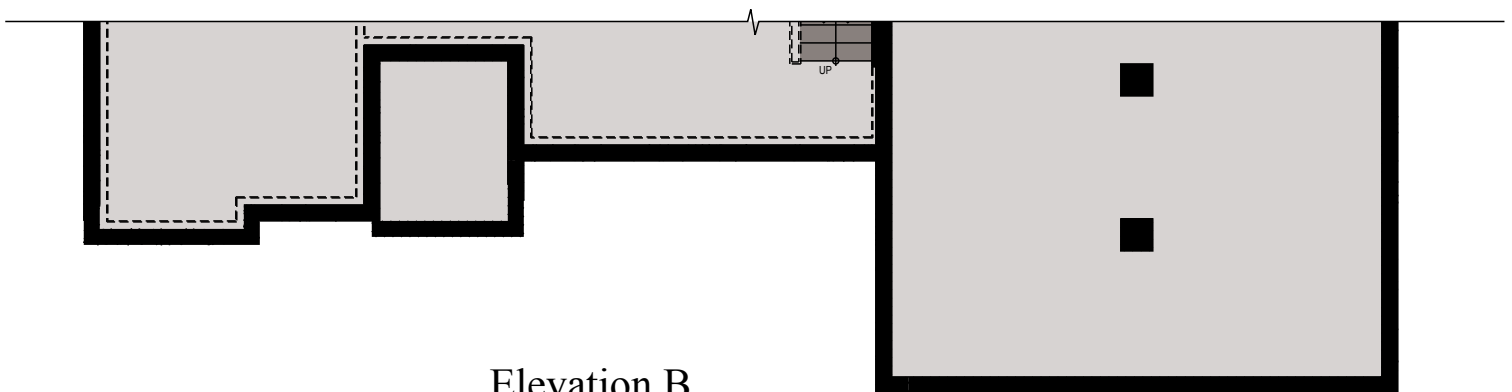


09/13/2018

Willersley Basement



In-Ground Condition - Elevation A & C



Elevation B



09/13/2018

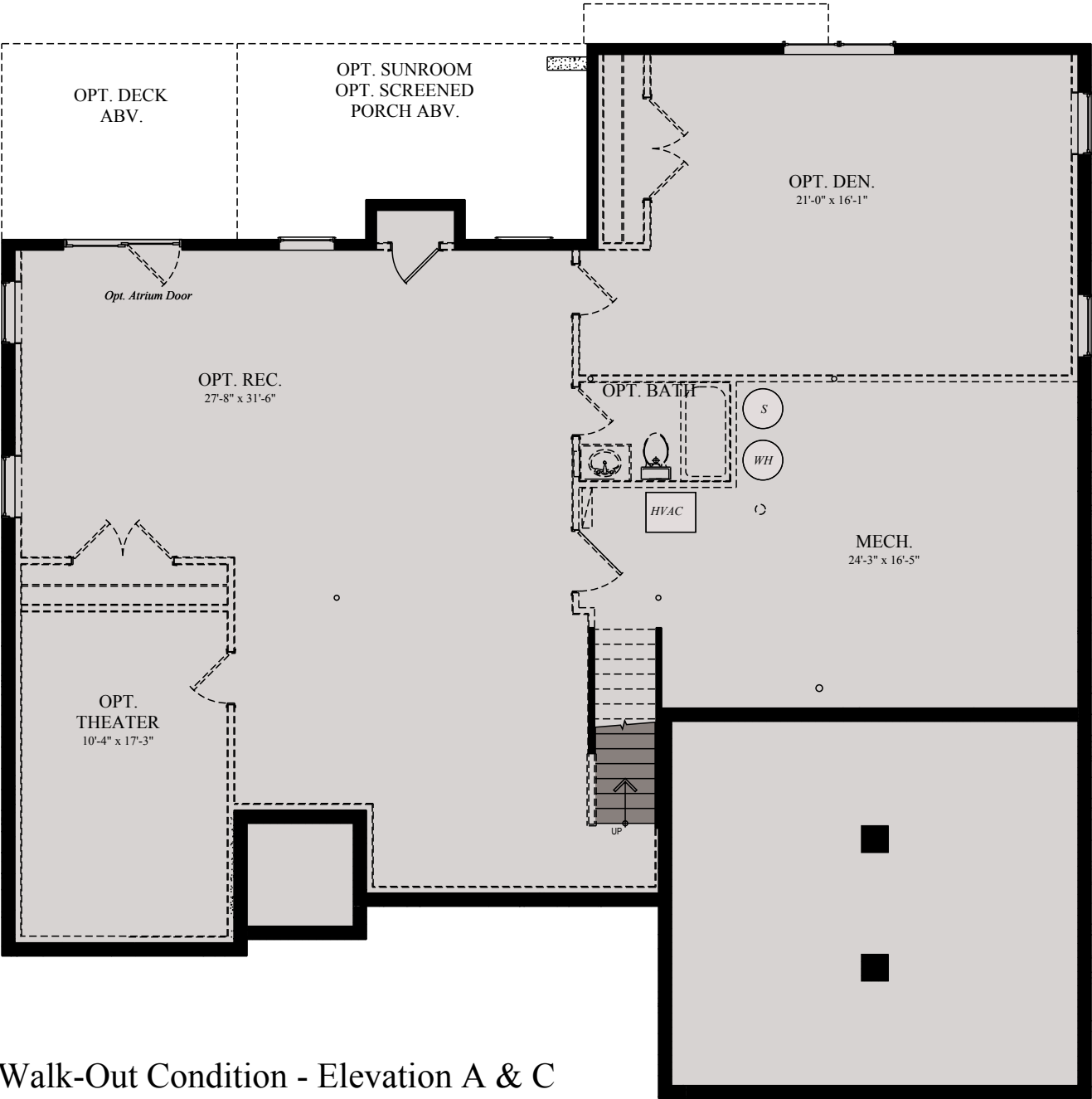
WORMALD CORPORATION - ALL RIGHTS RESERVED

All ideas, designs, arrangements and plans indicated or represented by this drawing and written material appearing herein constitute the original and unpublished work of the Wormald corporation and may not be duplicated, used or disclosed to any person, firm or corporation for any purpose whatsoever without the written consent of the wormald corporation. Actual product and specifications may vary in dimension or detail from these drawings and are subject to change without notice. Window and door locations vary per elevation. MHBR No. 3514



12-19-2018 2:59PM

Willersley Basement

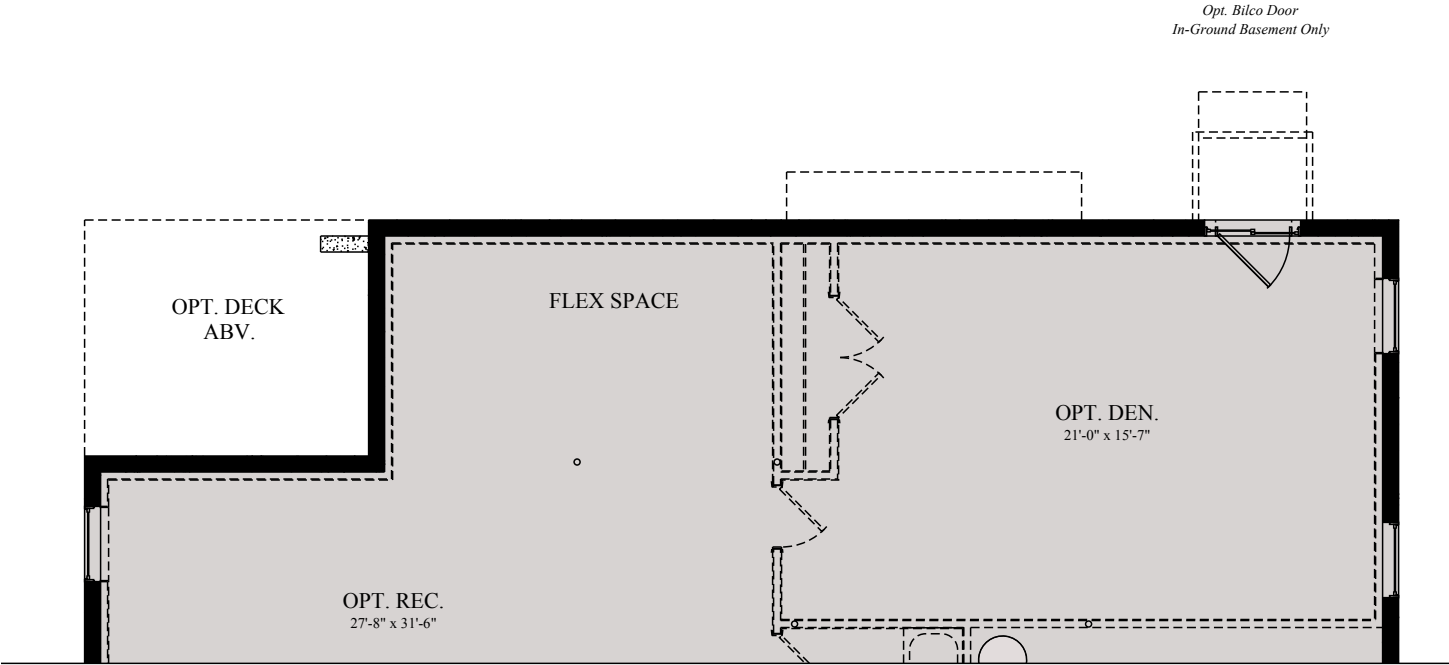


Walk-Out Condition - Elevation A & C

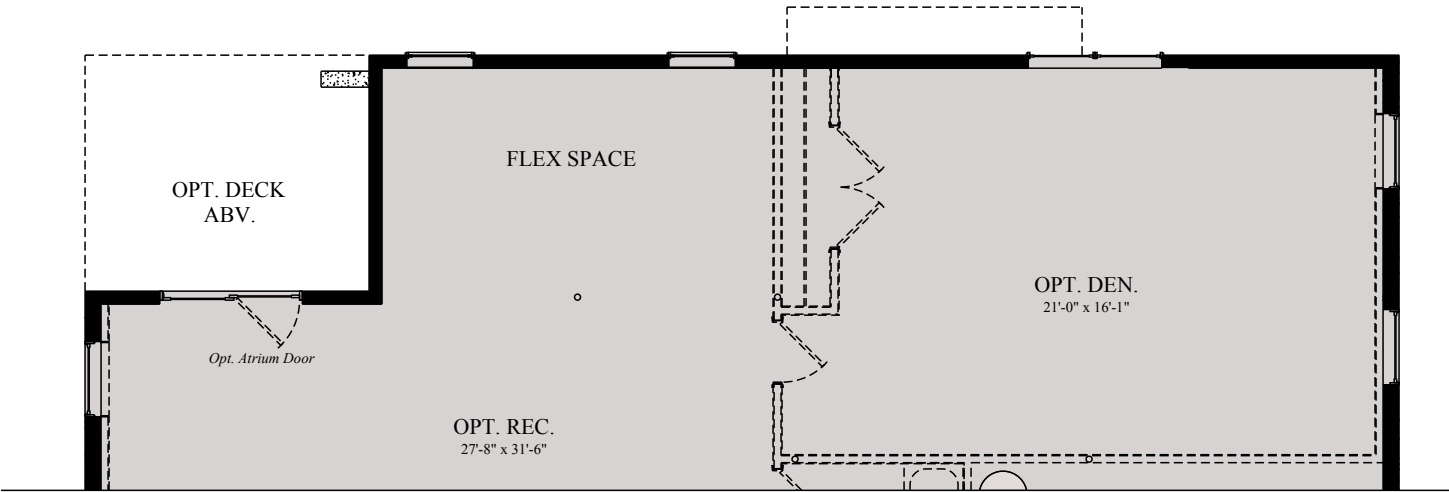


09/13/2018

Willersley Basement



Opt. In-Ground w/ Opt. Sunroom
/Opt. Screened Porch Above



Opt. Walk-Out w/ Opt. Sunroom
/Opt. Screened Porch Above



09/13/2018



LOVE
WHERE
YOU
LIVE

W
W O R M A L D
www.wormald.com