

# THE WHITEHAVEN

4,188 - 5,562 SQ FT LIVING SPACE



Elevation B

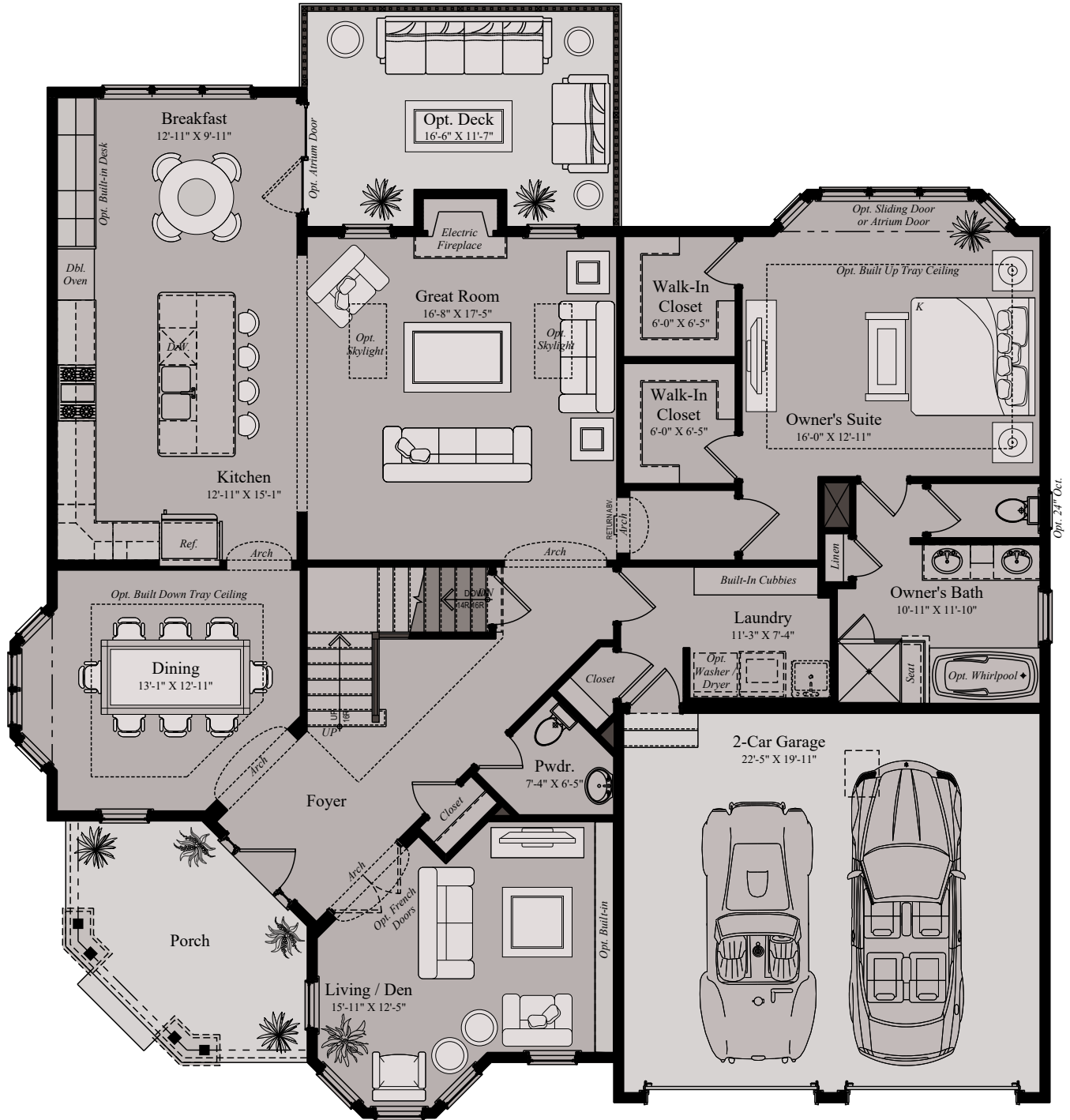
**BENNETT PRESERVE**  
The Grand Manor Collection

Cindy Van Meter, Sales Manager  
BennettPreserve@wormald.com | 301.732.4535  
Ijamsville, MD 21754  
Open By Appointment Daily 11 a.m. - 5 p.m.

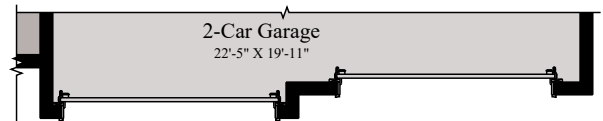
W  
WORMALD

Brokers Welcome.  
MHR 7457. Prices are  
rounded and subject to  
change without notice.



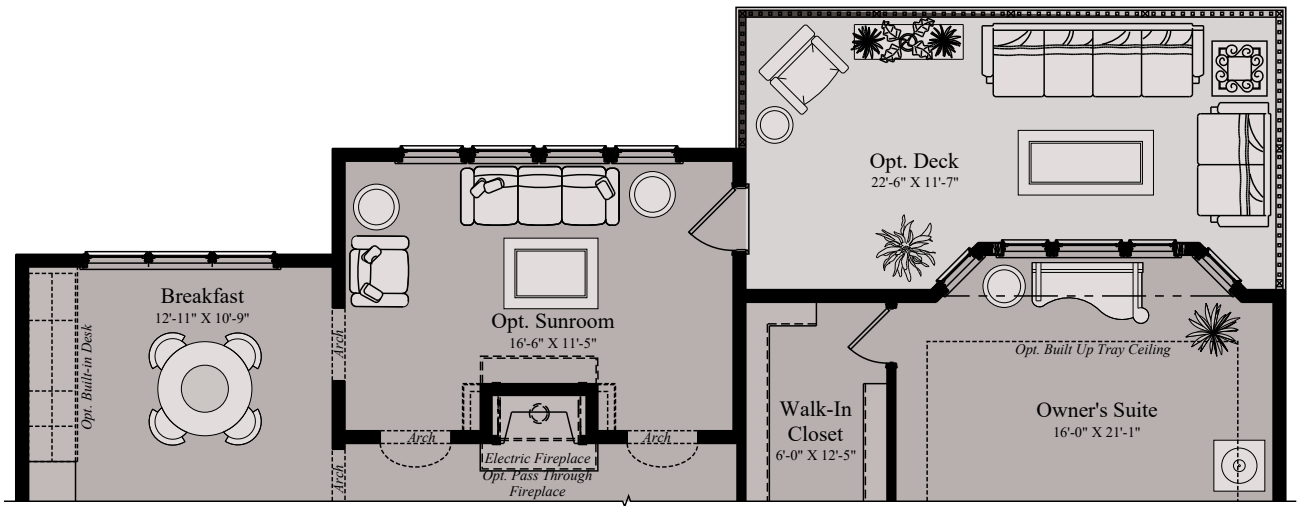


MAIN LEVEL ELEVATION A

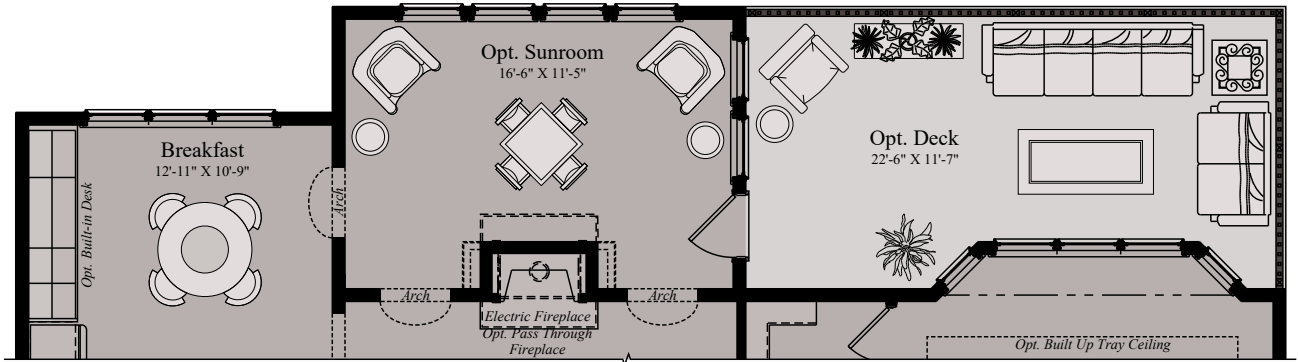


THE WHITEHAVEN | MAIN LEVEL

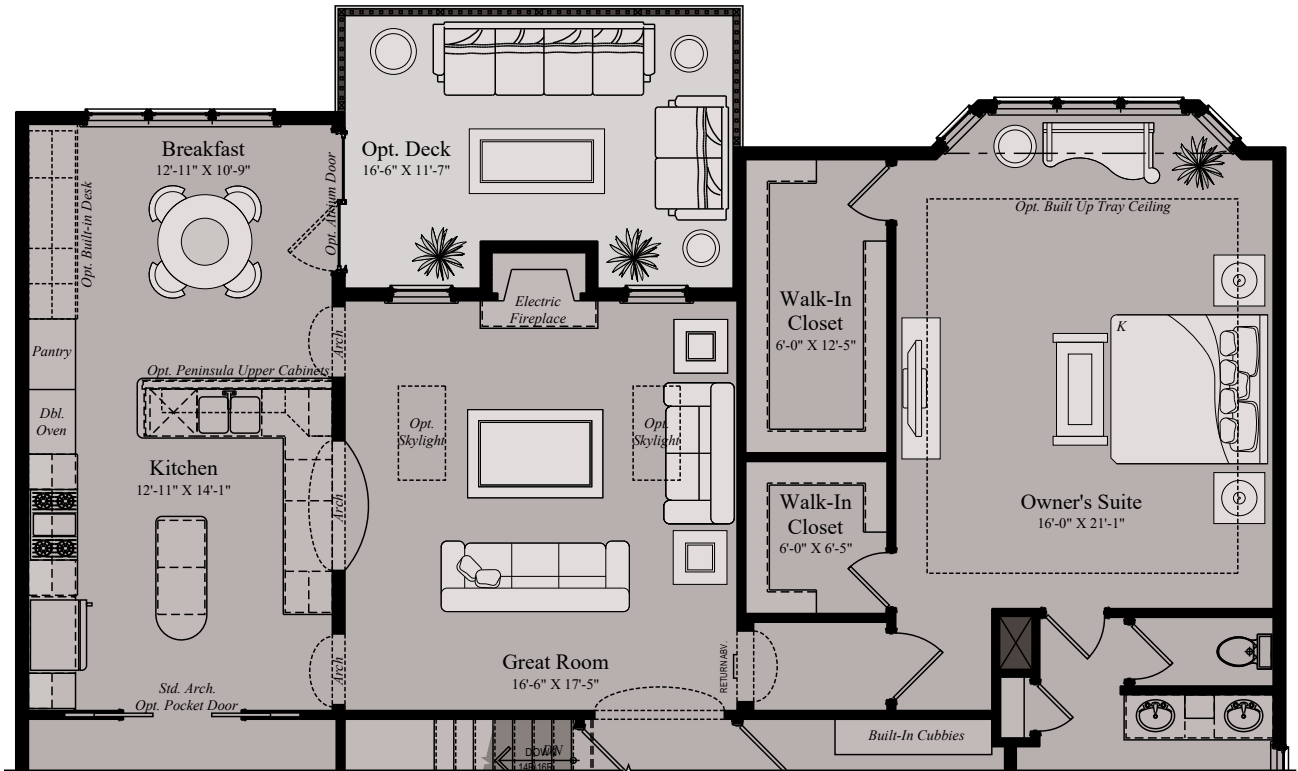
Architectural drawings are proprietary to Wormald Corporation. Unauthorized use or duplication of floor plans, concepts, or elevations is strictly prohibited. **Architectural designs are approximate artist's renderings and are for illustrative purposes only. Actual design and detail will vary from what is shown and are subject to change without notice.** Landscape and furniture is for illustrative purposes only. Optional areas are illustrated. Windows, door locations, and square footage may vary per elevation. Please consult Sales Manager for details. © 2022 Wormald Corporation.



**PARTIAL MAIN LEVEL W/ OPT. SUNROOM & OWNER SUITE EXTENSION**



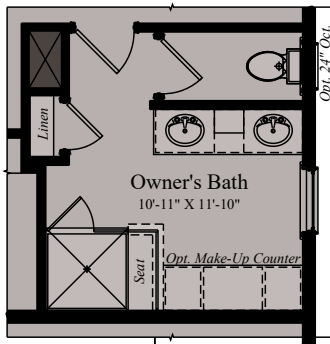
**PARTIAL MAIN LEVEL W/ OPT. SUNROOM**



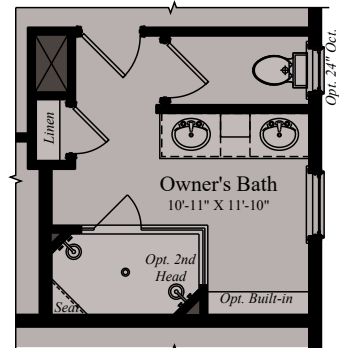
**PARTIAL MAIN LEVEL  
W/ OWNER SUITE EXTENSION & OPT. KITCHEN LAYOUT**

**THE WHITEHAVEN | MAIN LEVEL**

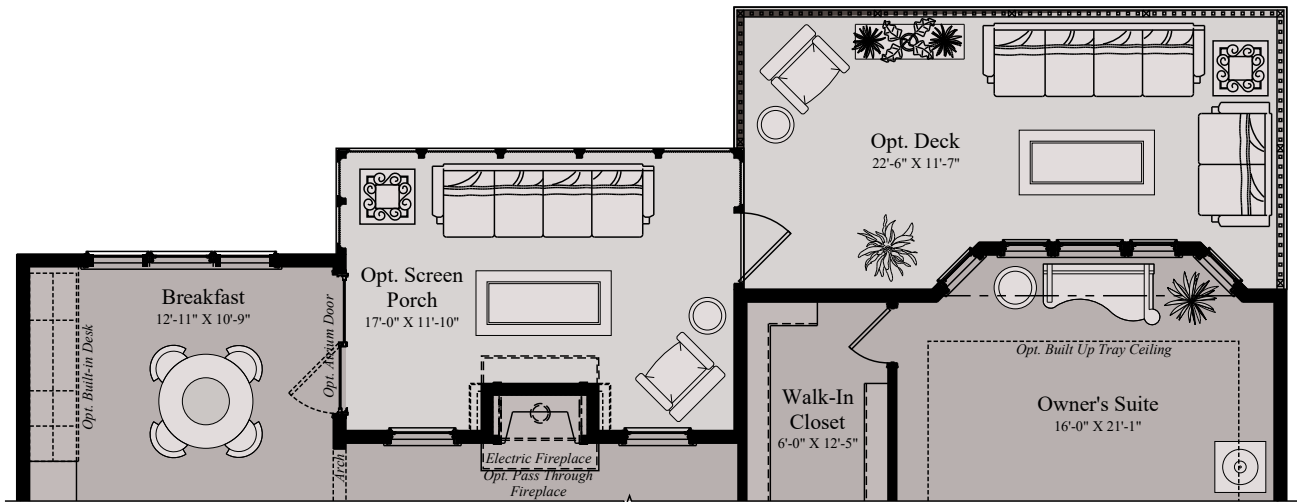
Architectural drawings are proprietary to Wormald Corporation. Unauthorized use or duplication of floor plans, concepts, or elevations is strictly prohibited. **Architectural designs are approximate artist's renderings and are for illustrative purposes only. Actual design and detail will vary from what is shown and are subject to change without notice.** Landscape and furniture is for illustrative purposes only. Optional areas are illustrated. Windows, door locations, and square footage may vary per elevation. Please consult Sales Manager for details. © 2022 Wormald Corporation.



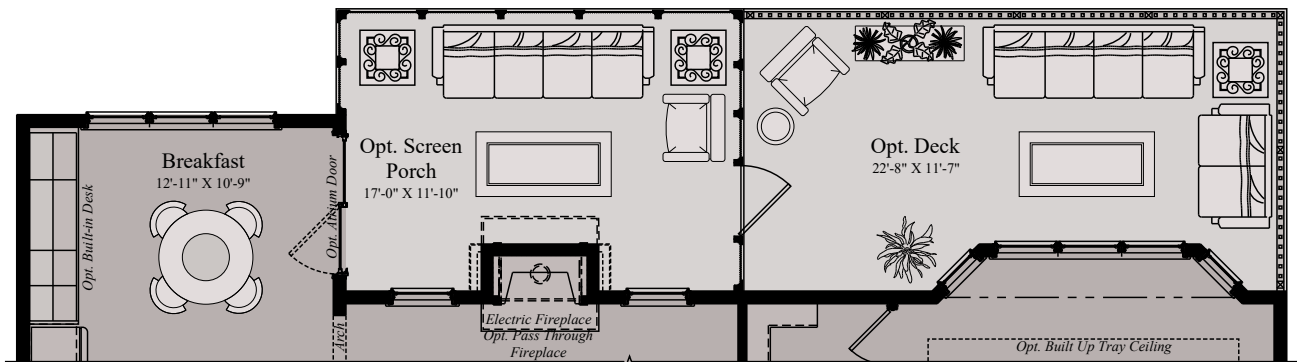
OPTIONAL OWNER'S BATH



OPTIONAL OWNER'S BATH



OPTIONAL SCREEN PORCH W/ OWNER SUITE EXTENSION

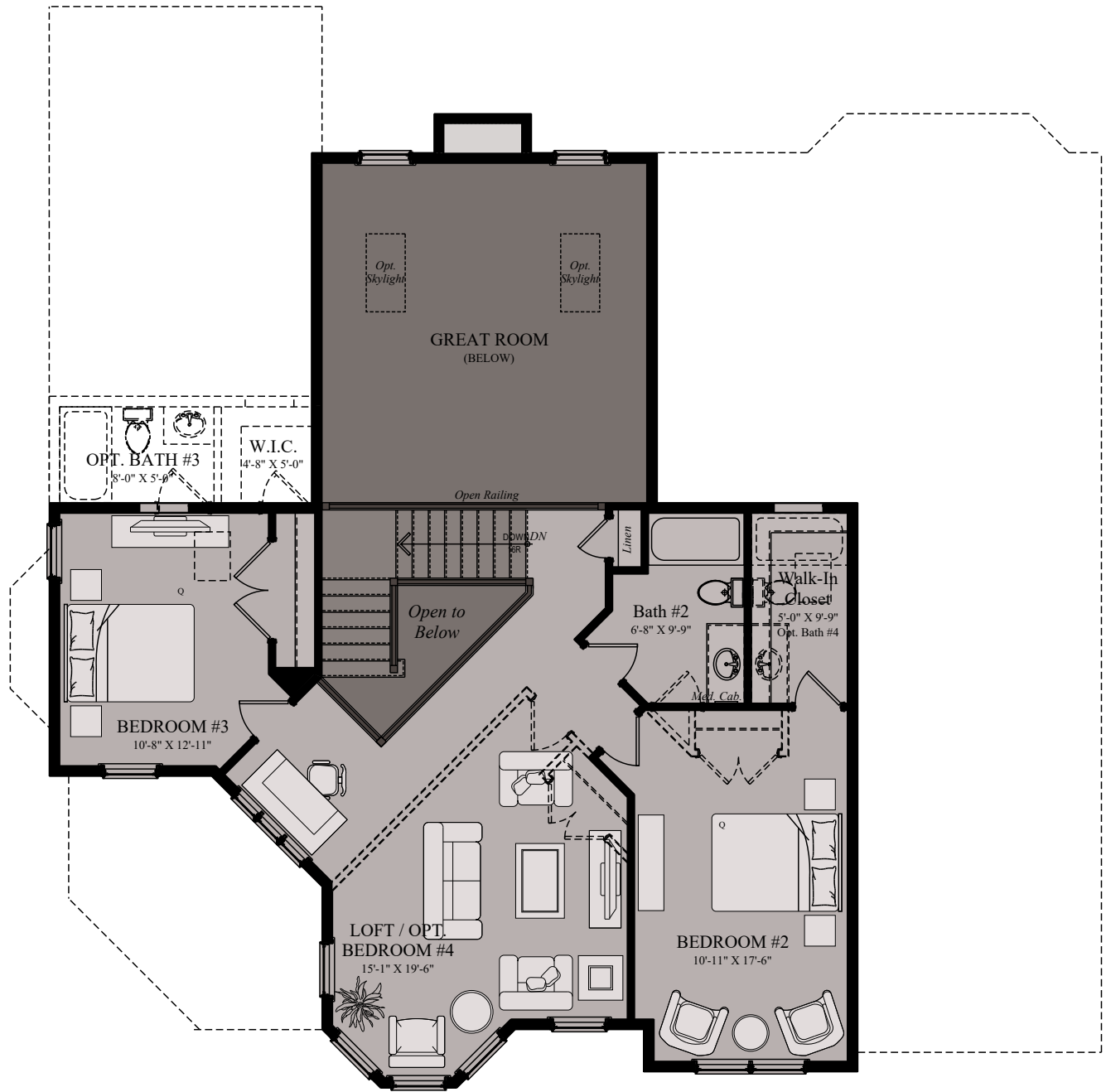


OPTIONAL SCREEN PORCH

THE WHITEHAVEN | MAIN LEVEL

Architectural drawings are proprietary to Wormald Corporation. Unauthorized use or duplication of floor plans, concepts, or elevations is strictly prohibited. **Architectural designs are approximate artist's renderings and are for illustrative purposes only. Actual design and detail will vary from what is shown and are subject to change without notice.** Landscape and furniture is for illustrative purposes only. Optional areas are illustrated. Windows, door locations, and square footage may vary per elevation. Please consult Sales Manager for details. © 2022 Wormald Corporation.

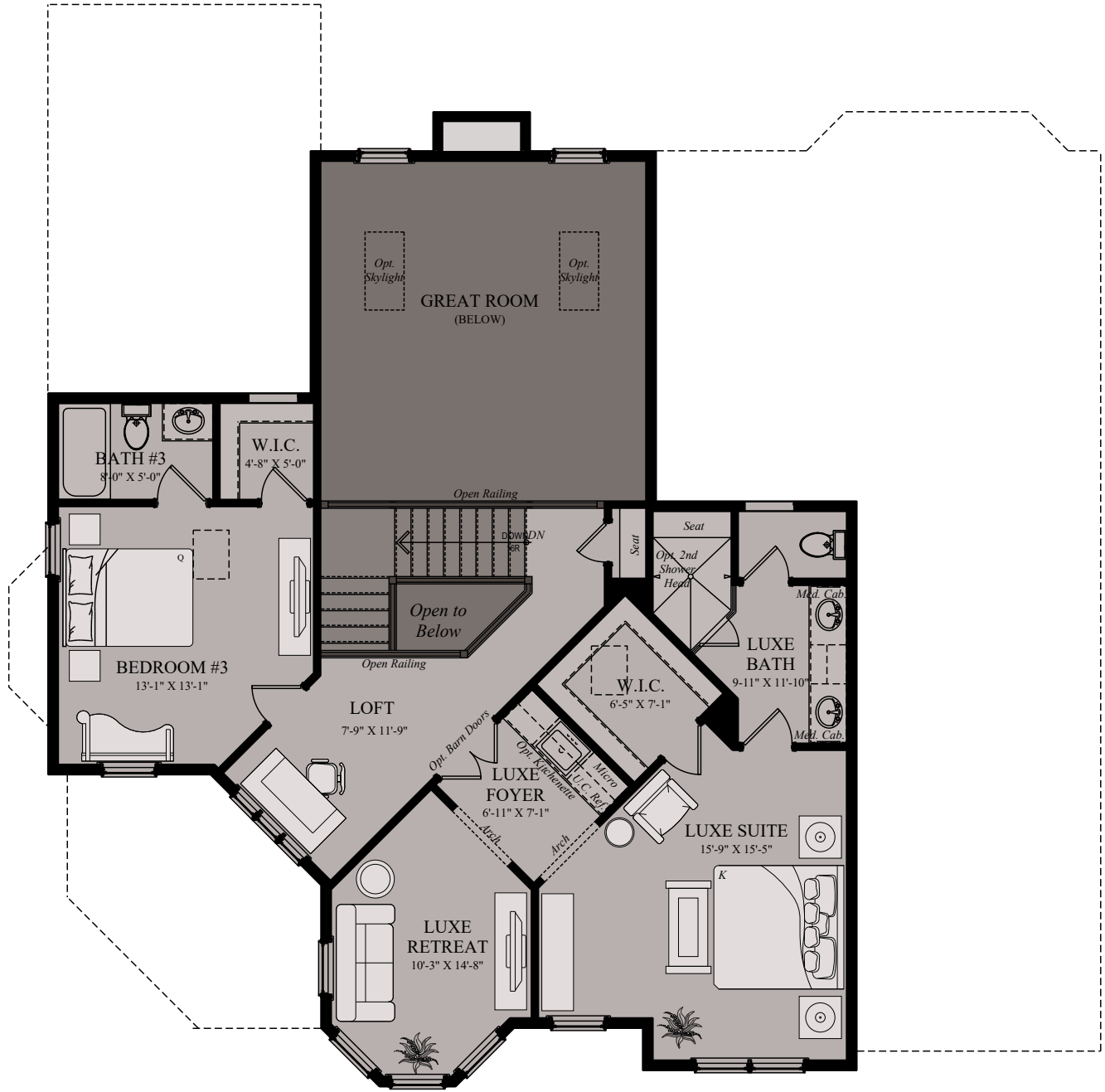




UPPER LEVEL - ELEVATION B  
 w/ OPT. LOFT  
 OR OPT. BEDROOM #4

THE WHITEHAVEN | UPPER LEVEL

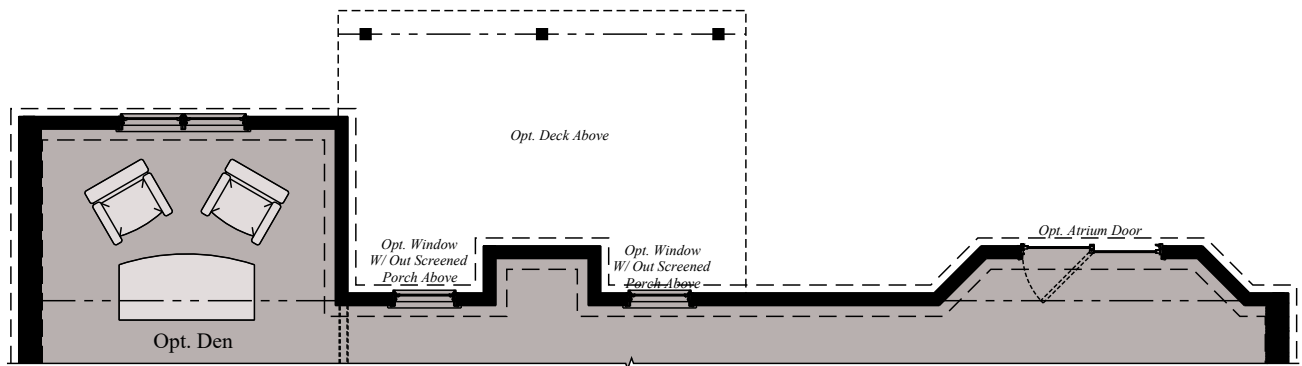
Architectural drawings are proprietary to Wormald Corporation. Unauthorized use or duplication of floor plans, concepts, or elevations is strictly prohibited. **Architectural designs are approximate artist's renderings and are for illustrative purposes only. Actual design and detail will vary from what is shown and are subject to change without notice.** Landscape and furniture is for illustrative purposes only. Optional areas are illustrated. Windows, door locations, and square footage may vary per elevation. Please consult Sales Manager for details. © 2022 Wormald Corporation.



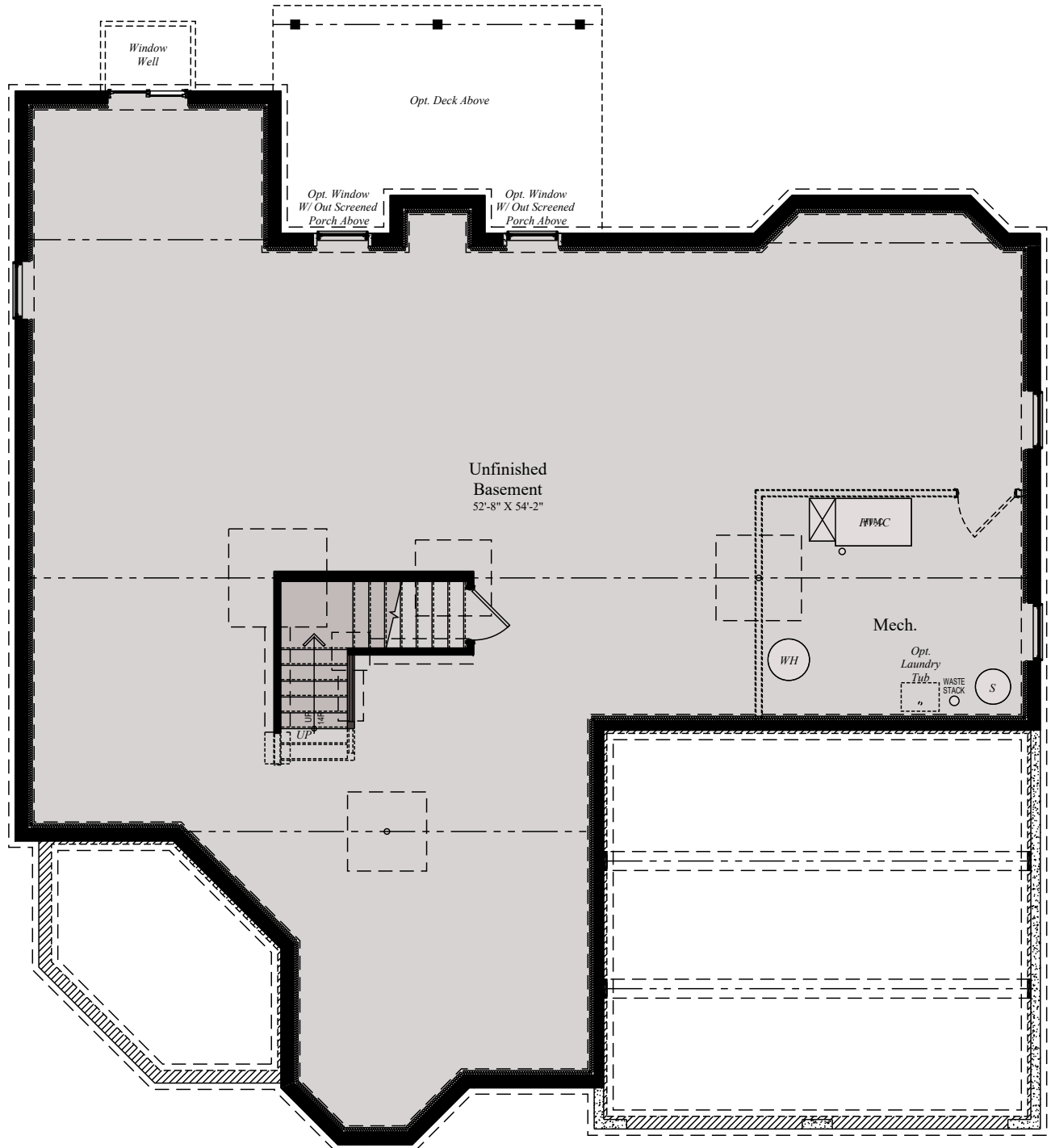
**UPPER LEVEL - ELEVATION B  
W/ OPTIONAL LUXE SUITE & RETREAT  
w/ BATH #3 INCLUDED**

**THE WHITEHAVEN | UPPER LEVEL**

Architectural drawings are proprietary to Wormald Corporation. Unauthorized use or duplication of floor plans, concepts, or elevations is strictly prohibited. **Architectural designs are approximate artist's renderings and are for illustrative purposes only. Actual design and detail will vary from what is shown and are subject to change without notice.** Landscape and furniture is for illustrative purposes only. Optional areas are illustrated. Windows, door locations, and square footage may vary per elevation. Please consult Sales Manager for details. © 2022 Wormald Corporation.



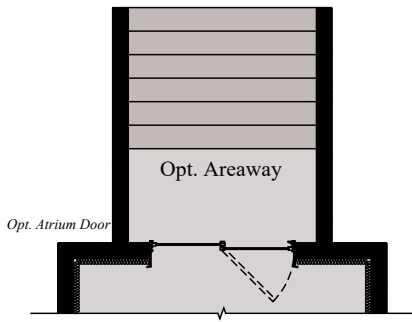
LOWER LEVEL - WALK-OUT CONDITION



LOWER LEVEL - UN-FINISHED IN-GROUND CONDITION

THE WHITEHAVEN | LOWER LEVEL

Architectural drawings are proprietary to Wormald Corporation. Unauthorized use or duplication of floor plans, concepts, or elevations is strictly prohibited. **Architectural designs are approximate artist's renderings and are for illustrative purposes only. Actual design and detail will vary from what is shown and are subject to change without notice.** Landscape and furniture is for illustrative purposes only. Optional areas are illustrated. Windows, door locations, and square footage may vary per elevation. Please consult Sales Manager for details. © 2022 Wormald Corporation.

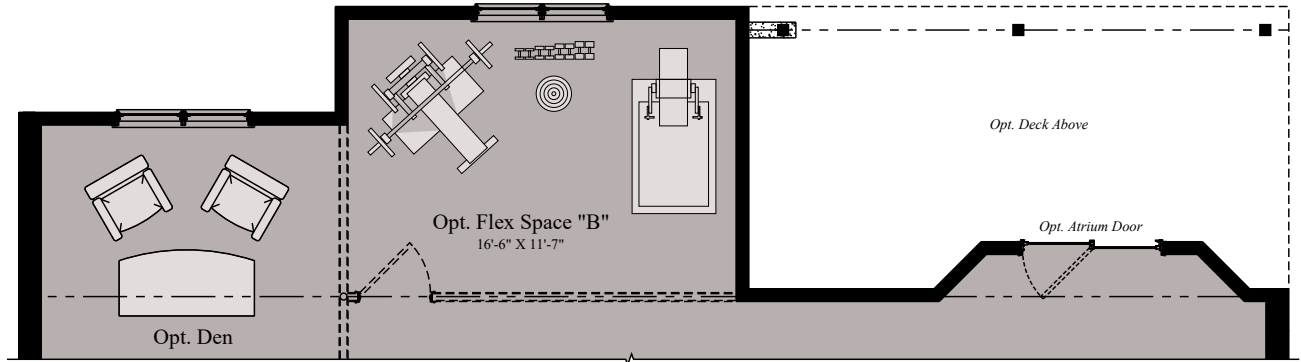


## LOWER LEVEL - FINISHED IN-GROUND CONDITION

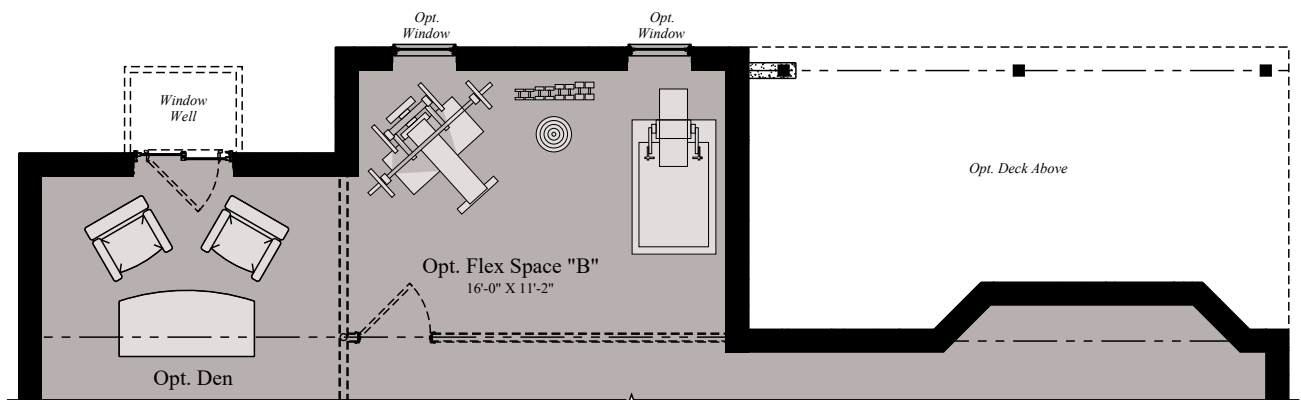
### THE WHITEHAVEN | LOWER LEVEL

Architectural drawings are proprietary to Wormald Corporation. Unauthorized use or duplication of floor plans, concepts, or elevations is strictly prohibited. **Architectural designs are approximate artist's renderings and are for illustrative purposes only. Actual design and detail will vary from what is shown and are subject to change without notice.** Landscape and furniture is for illustrative purposes only. Optional areas are illustrated. Windows, door locations, and square footage may vary per elevation. Please consult Sales Manager for details. © 2022 Wormald Corporation.





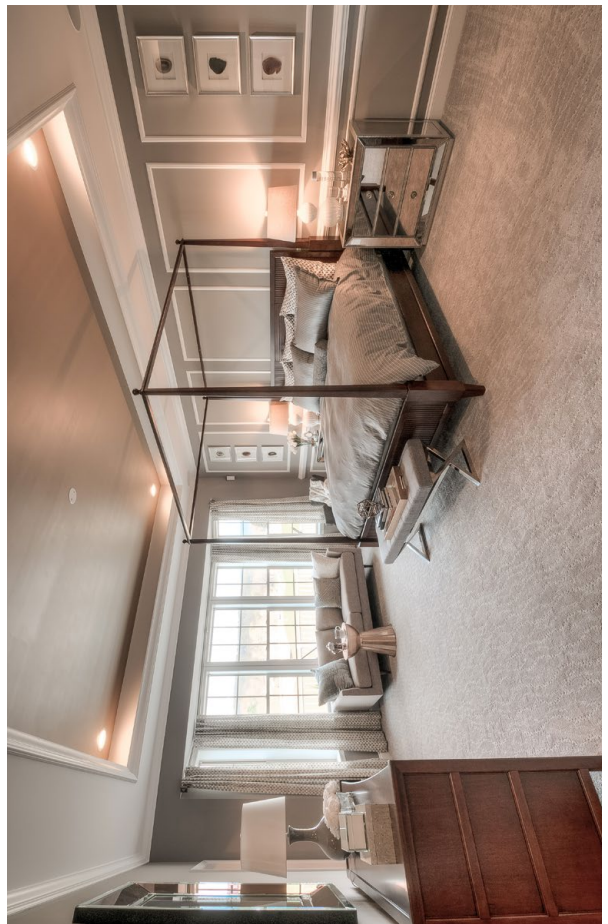
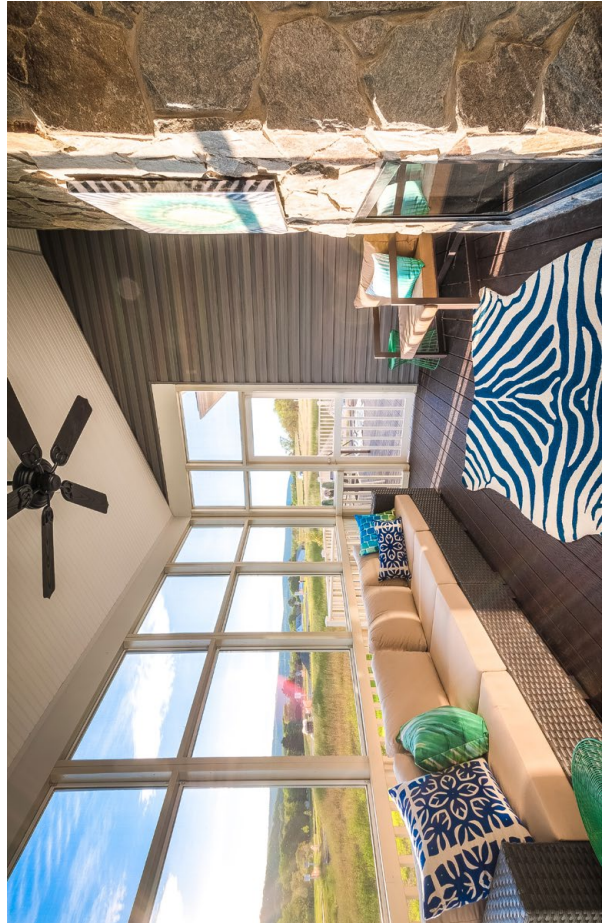
PARTIAL LOWER LEVEL - W/ OPT.  
SUNROOM - WALK-OUT CONDITION



PARTIAL LOWER LEVEL - W/ OPT. SUNROOM  
IN-GROUND CONDITION

**THE WHITEHAVEN | LOWER LEVEL**

Architectural drawings are proprietary to Wormald Corporation. Unauthorized use or duplication of floor plans, concepts, or elevations is strictly prohibited. **Architectural designs are approximate artist's renderings and are for illustrative purposes only. Actual design and detail will vary from what is shown and are subject to change without notice.** Landscape and furniture is for illustrative purposes only. Optional areas are illustrated. Windows, door locations, and square footage may vary per elevation. Please consult Sales Manager for details. © 2022 Wormald Corporation.







**LOVE**  
WHERE  
**YOU**  
LIVE

**W**  
W O R M A L D

[www.wormald.com](http://www.wormald.com)