

# THE SUMMERHILL

FROM APPROX. 3,462 SQ. FT.



Elevation I shown with optional front door and stucco



Elevation II

## THE LINKS AT GETTYSBURG The French Country Collection

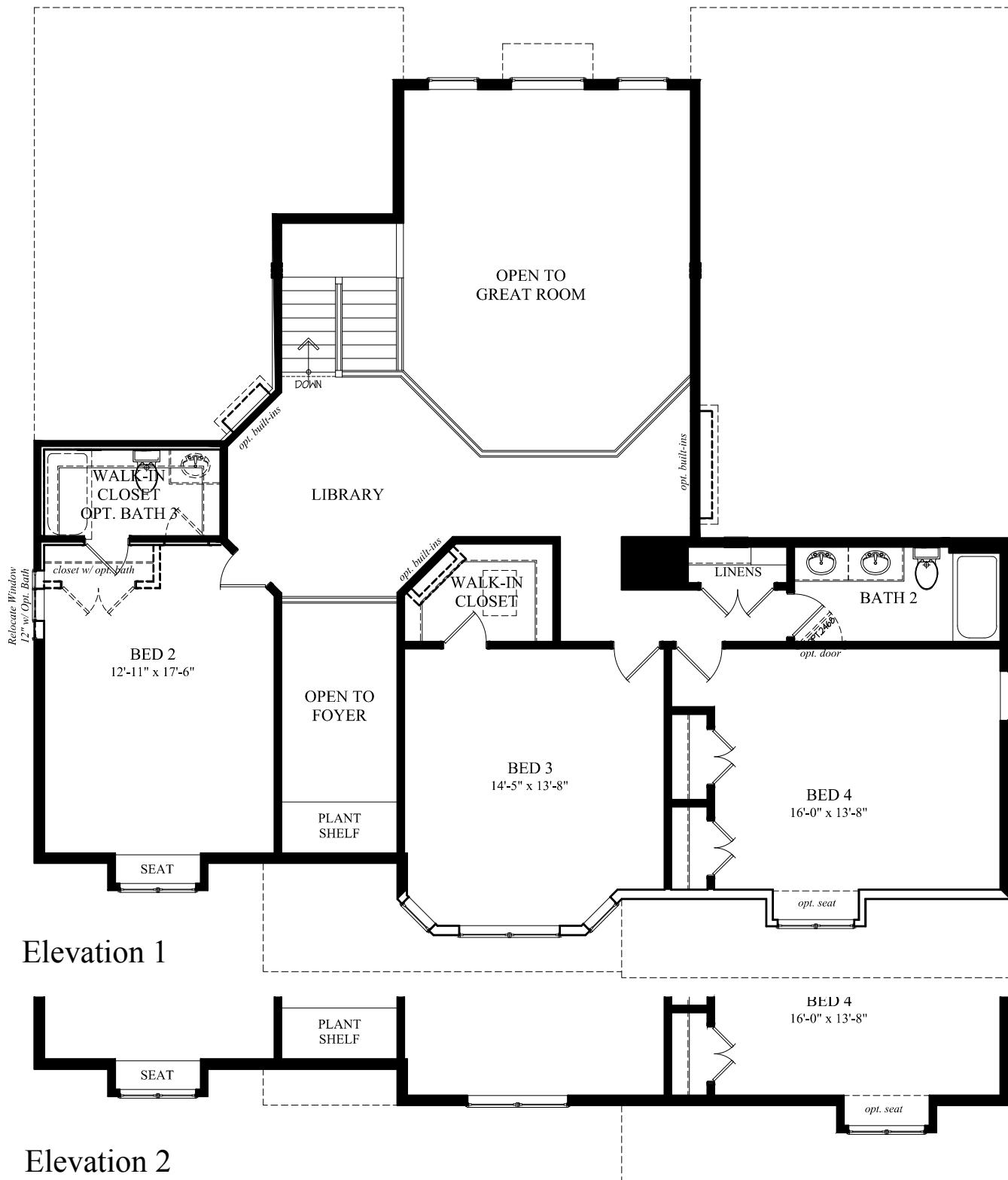
Cindy Van Meter, Sales Manager  
717.359.8482 | [Cindy.VanMeter@wormald.com](mailto:Cindy.VanMeter@wormald.com)  
147 Savannah Drive, Gettysburg, PA 17325  
Open Thursday - Monday 11 a.m. - 5 p.m.  
or by appointment

W  
W O R M A L D

Brokers welcome. Prices  
are rounded and subject to  
change without notice.







## THE SUMMERHILL | UPPER LEVEL

Architectural drawings are proprietary to Wormald Corporation. Unauthorized use or duplication of floor plans, concepts, or elevations is strictly prohibited. **Architectural designs are approximate artist's renderings and are for illustrative purposes only. Actual design and detail will vary from what is shown and are subject to change without notice.** Landscape and furniture is for illustrative purposes only. Optional areas are illustrated. Windows, door locations, and square footage may vary per elevation. Please consult Sales Manager for details. ©2018 Wormald Corporation.

**W**  
W O R M A L D

08-15-2018 5:03PM

## Walk-Out

OPT. FLEX SPACE  
16'-6" x 11'-6"

*opt. 5468  
atrium door*

*Opt. Window*

*opt. gas  
fireplace*

*Opt. Window*

## In-Ground

OPT. FLEX SPACE  
16'-6" x 11'-6"

OPTIONAL MASTER  
BEDROOM EXTENSION  
ABOVE

OPTIONAL MASTER  
BEDROOM EXTENSION  
ABOVE  
*opt. areaway*

EGRESS  
WELL

OPT. BED  
18'-3" x 13'-8"

OPT. REC.  
32'-6" x 20'-3"

OPT.  
BATH

W.I.C.

*opt.  
d.w.*

OPT.  
WET  
BAR

*opt.  
u.c. ref*

MECH.  
UNFINISHED

HVAC

WH

SUMP

*opt.  
laundry tub*

OPT.  
FITNESS / WINE  
CELLAR  
11'-10" x 16'-9"

OPT. THEATRE  
17'-6" x 15'-0"

*opt. 1 steps  
(only w/ opt. 9' ceiling)*

*opt. built-ins*

GARAGE  
ABOVE

## THE SUMMERHILL | LOWER LEVEL

Architectural drawings are proprietary to Wormald Corporation. Unauthorized use or duplication of floor plans, concepts, or elevations is strictly prohibited. **Architectural designs are approximate artist's renderings and are for illustrative purposes only. Actual design and detail will vary from what is shown and are subject to change without notice.** Landscape and furniture is for illustrative purposes only. Optional areas are illustrated. Windows, door locations, and square footage may vary per elevation. Please consult Sales Manager for details. ©2018 Wormald Corporation.

**W**  
WORMALD

08-15-2018 5:03PM













**LOVE**  
**WHERE**  
**YOU**  
**LIVE**

**W**  
**W O R M A L D**  
[www.wormald.com](http://www.wormald.com)