

# LE BEAUX

4,207-6,554 SQ FT LIVING SPACE



Elevation C



Elevation B



Elevation A

## WORMAN'S MILL The River View Estates

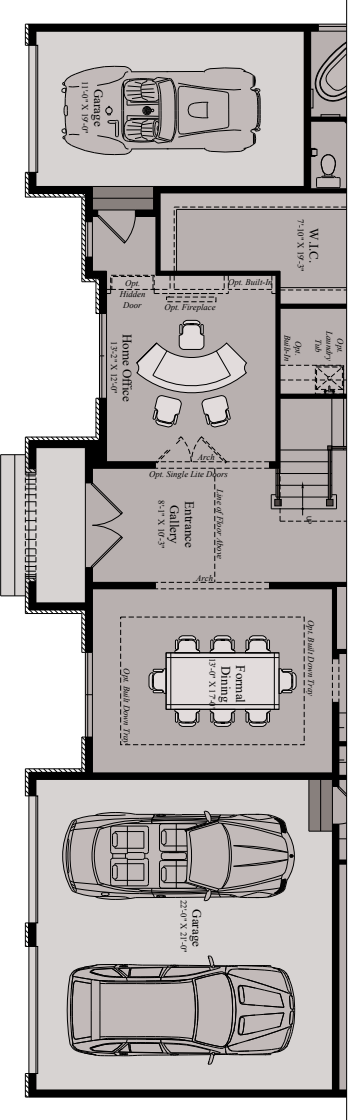
Cindy Van Meter, Sales Manager  
240.341.7913 | [Cindy.Vanmeter@wormald.com](mailto:Cindy.Vanmeter@wormald.com)  
10382 Springside Terrace, Ijamsville, MD 21754  
Open Daily 11 a.m. - 5 p.m.  
or by appointment

W  
WORMALD

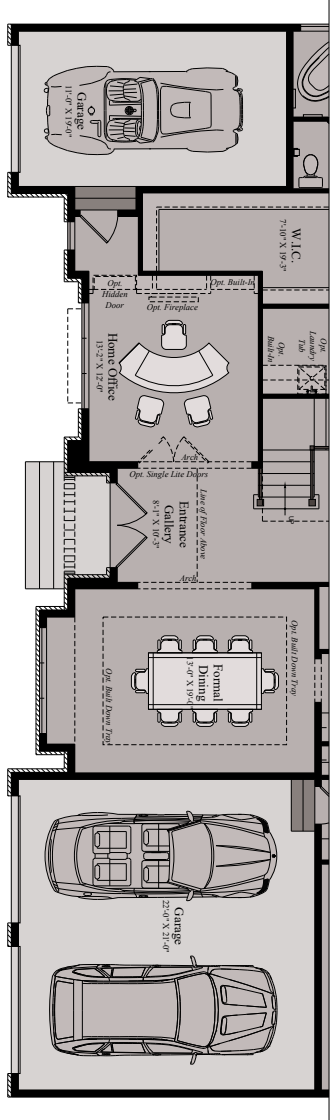
Brokers welcome. MHRB  
No. 3517 and 6835. Prices  
are rounded and subject  
to change without notice.







PARTIAL MAIN LEVEL PLAN - ELEVATION "B"

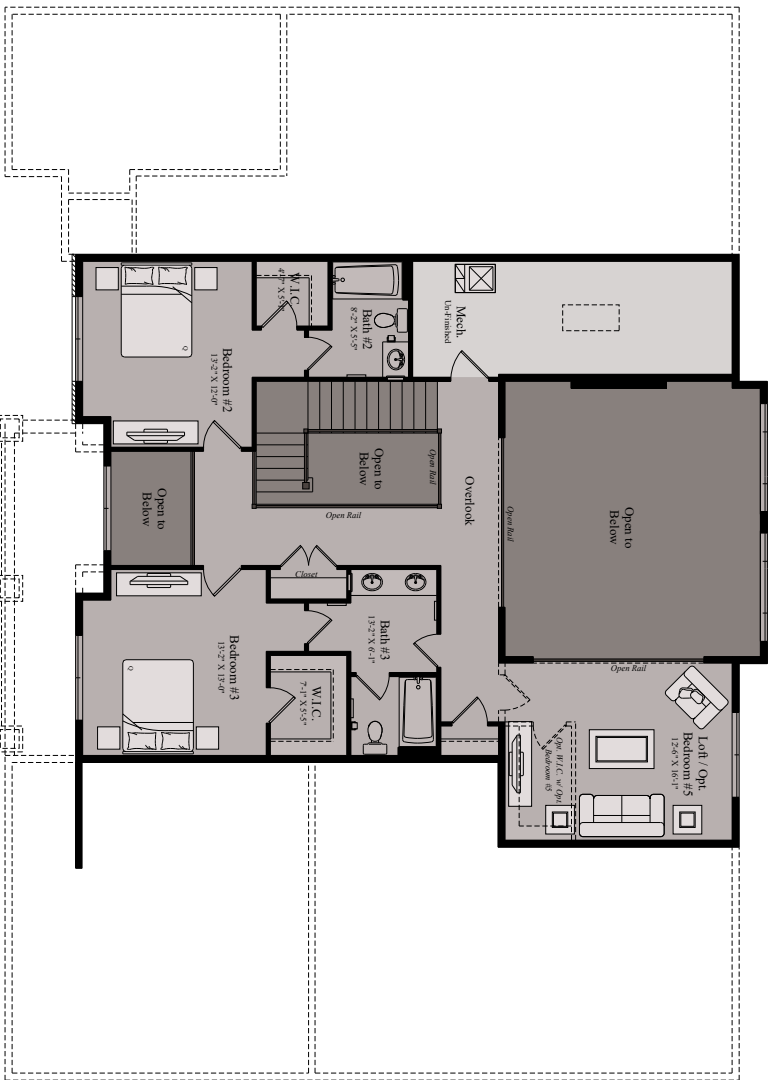


PARTIAL MAIN LEVEL PLAN - ELEVATION "C"

Design and details are the exclusive property of Wornald Corporation. Unauthorized use is strictly prohibited. Actual product and specifications may vary in dimension or detail from these drawings and are subject to change without notice. Window and door locations vary per elevation. MHBR No. 3414. Finished square footage calculations for this house were made based on plan dimensions only and may vary from the finished square footage of the house as built. Area calculated per the American National Standard for Single-Family Residential Buildings. Approved June 2013; ANSI Z765-2013



06/10/2019

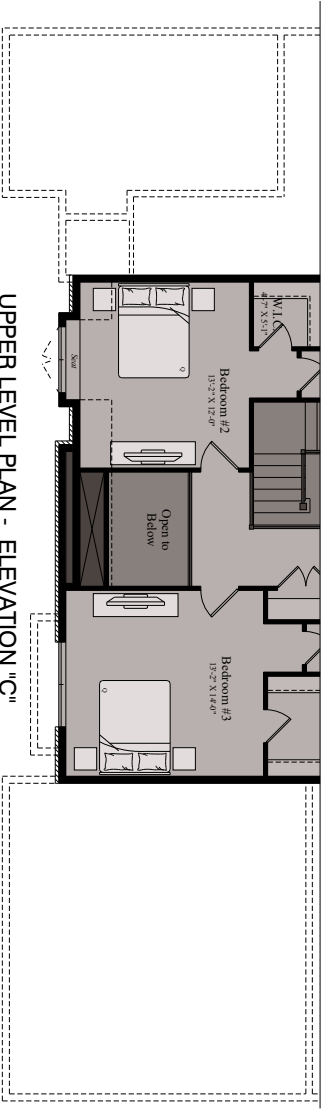
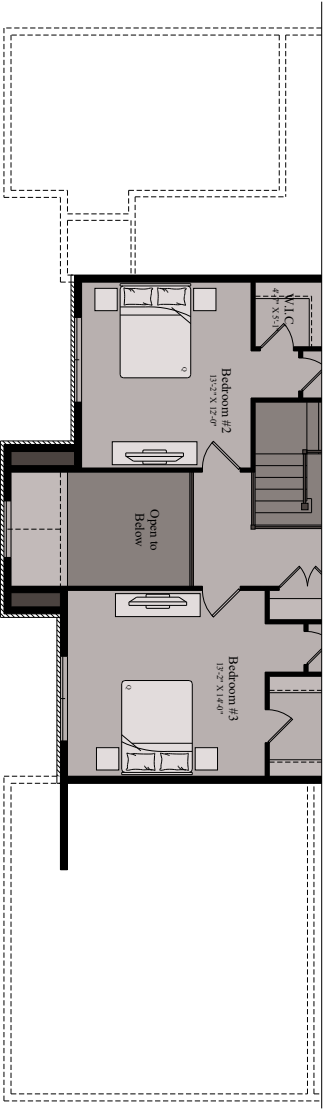


UPPER LEVEL PLAN - ELEVATION "A"

Design and details are the exclusive property of Wornald Corporation. Unauthorized use is strictly prohibited. Actual product and specifications may vary in dimension or detail from these drawings and are subject to change without notice. Window and door locations vary per elevation. MHBR No. 314. Finished square footage calculations for this house were made based on plan dimensions only and may vary from the finished square footage of the house as built. Area calculated per the American National Standard For Single-Family Residential Buildings. Approved June 2013; ANSI Z765-2013



06/10/2019

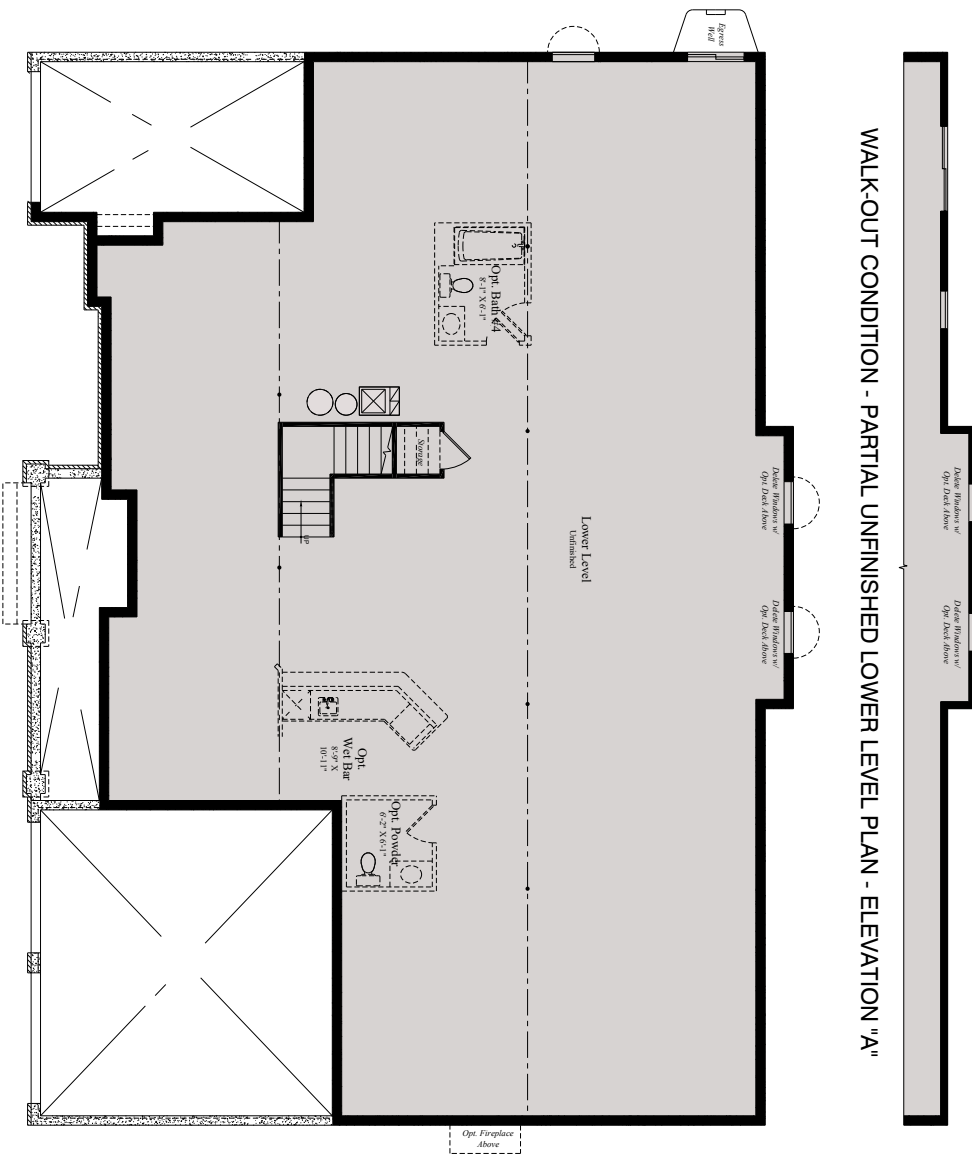


Design and details are the exclusive property of Wornald Corporation. Unauthorized use is strictly prohibited. Actual product and specifications may vary in dimension or detail from these drawings and are subject to change without notice. Window and door locations vary per elevation. MHBR No. 3414  
Finished square footage calculations for this house were made based on plan dimensions only and may vary from the finished square footage of the house as built. Area calculated per the American National Standard for Single-Family Residential Buildings. Approved June 2013. ANSI Z765-2013



06/10/2019

WALK-OUT CONDITION - PARTIAL UNFINISHED LOWER LEVEL PLAN - ELEVATION "A"



IN-GROUND CONDITION - UNFINISHED LOWER LEVEL PLAN - ELEVATION "A"

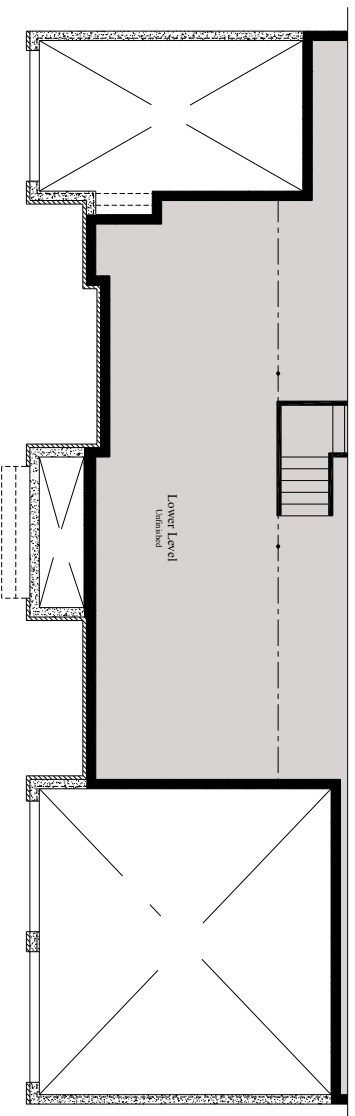
06/10/2019

Design and details are the exclusive property of Wornald Corporation. Unauthorized use is strictly prohibited. Actual product and specifications may vary in dimension or detail from these drawings and are subject to change without notice. Window and door locations vary per elevation. MHBR No. 3414. Finished square footage calculations for this house were made based on plan dimensions only and may vary from the finished square footage of the house as built. Areas calculated per the American National Standard For Single-Family Residential Buildings. Approved June 2013; ANSI Z765-2003

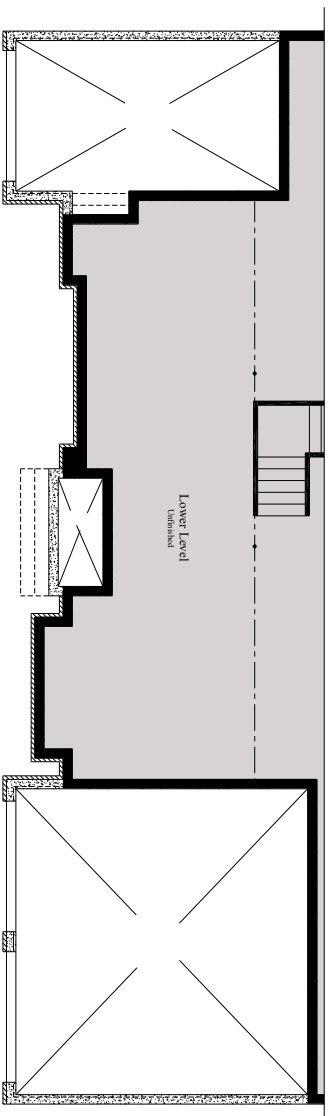








PARTIAL UNFINISHED LOWER LEVEL PLAN - ELEVATION "B"



PARTIAL UNFINISHED LOWER LEVEL PLAN - ELEVATION "C"



06/10/2019

Design and details are the exclusive property of Wornald Corporation. Unauthorized use is strictly prohibited. Actual product and specifications may vary in dimension or detail from these drawings and are subject to change without notice. Window and door locations vary per elevation. MHBR No. 3414. Finished square footage calculations for this house were made based on plan dimensions only and may vary from the finished square footage of the house as built. Area calculated per the American National Standard for Single-Family Residential Buildings. Approved June 2013; ANSI Z765-2013













**LOVE**  
WHERE  
**YOU**  
LIVE

**W**  
W O R M A L D

[www.wormald.com](http://www.wormald.com)