

THE LA BELLE

6,440 - 7,681 SQ FT LIVING SPACE



Elevation C



Elevation B



Elevation A

BENNETT PRESERVE The Grand Manor Collection

Cindy Van Meter, Sales Manager
BennettPreserve@wormald.com | 301.732.4535
ljamsville, MD 21754
Open By Appointment Daily 11 a.m. - 5 p.m.

W
WORMALD

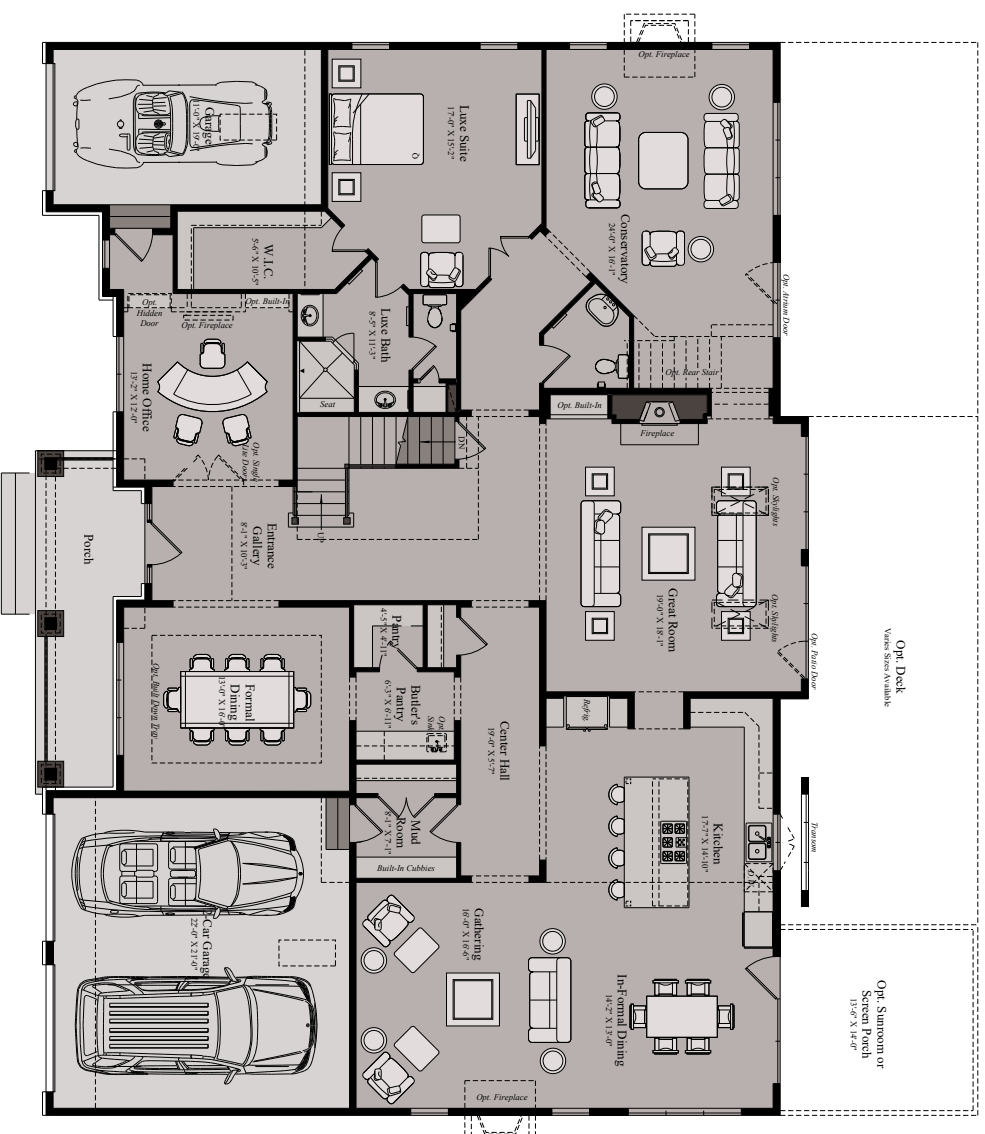
Brokers Welcome.
MHB 7457. Prices are
rounded and subject to
change without notice.



Opt. Sunroom
10'-0" x 14'-0"

This architectural floor plan shows a house with a curved staircase. The staircase is located in the upper left portion of the plan, featuring a quarter-circle turn. It is bordered by a dashed line, indicating a specific area or boundary. The plan includes various rooms, a central hallway, and a large open area on the right. A small circular feature, possibly a well or a decorative element, is visible near the top center. The overall layout is compact and efficient, with the curved staircase being a prominent feature.

PARTIAL MAIN LEVEL PLAN - OPT. CURVED STAIR



MAIN LEVEL ELEVATION "A"

06/04/2019

Design and details are the exclusive property of Winward Corporation. Unauthorized use is strictly prohibited. Actual product and specifications may vary in dimension or detail from these drawings and are subject to change without notice. Window and door locations vary per elevation. MHBR No. 3514. Finished square footage calculations for this house were made based on plan dimensions only and may vary from the finished square footage of the house as built. Acres calculated per the American National Standard For Single-Family Residential Buildings. Approved June 2013; ANSI Z765-2013

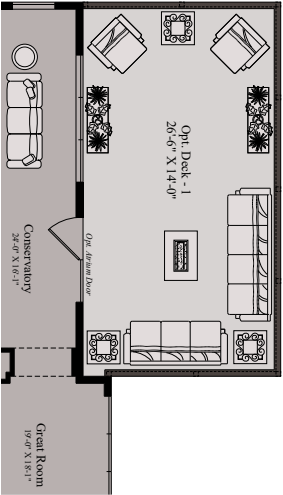
WORMALD

Design and details are the exclusive property of Winward Corporation. Unauthorized use is strictly prohibited. Actual product and specifications may vary in dimension or detail from these drawings and are subject to change without notice. Window and door locations vary per elevation. MHHR No. 3514. Finished square footage calculations for this house were made based on plan dimensions only and may vary from the finished square footage of the house as built. Areas calculated per the American National Standard For Single-Family Residential Buildings, Approved June 2013; ANSI Z765-2013.

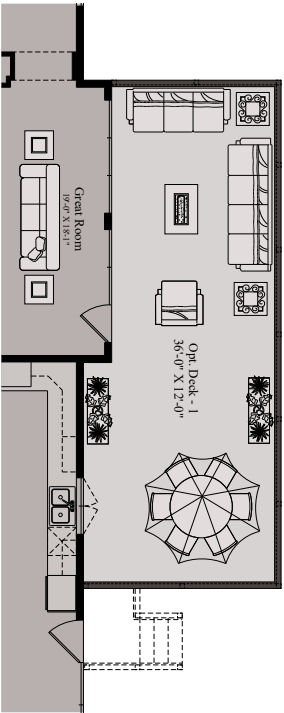
This floor plan shows a 1,200 sq. ft. house with a car garage, formal dining room, entrance gallery, home office, and carport. The layout includes a car garage (12'0" x 21'0") with a car, a formal dining room (10'0" x 13'0") with a table and chairs, an entrance gallery (8'0" x 10'0"), a home office (10'2" x 12'0") with a desk and chair, a carport (10'0" x 10'0") with a car, and a porch. The house also features a W.C. (6'0" x 10'0"), a bathroom (5'0" x 6'0"), and a kitchen (10'0" x 10'0"). The overall dimensions of the house are 30'0" x 40'0".

This floor plan shows a two-story house with a total area of 1,500 sq. ft. The layout includes:

- Garage:** A 2-car garage at the front (left) with a 12'0" X 18'0" area.
- Formal Dining Room:** Located on the left side of the main floor, measuring 10'0" X 12'0". It features a large rectangular table and chairs.
- Home Office:** Situated in the center of the main floor, measuring 10'0" X 12'0". It contains a curved desk and chairs.
- Entrance:** A central entrance measuring 8'0" X 10'0" with a small closet.
- Living Area:** An open space at the front (left) with a fireplace and a large window.
- Kitchen:** Located at the back (right) of the main floor, measuring 10'0" X 12'0". It includes a sink, stove, and refrigerator.
- Bedroom:** A bedroom at the back (right) measuring 10'0" X 12'0" with a closet.
- Bathroom:** A bathroom at the back (right) measuring 5'0" X 7'0" with a toilet and sink.
- W.C.:** A water closet at the back (right) measuring 5'0" X 7'0" with a toilet and sink.
- Staircase:** A staircase leading up to the second floor, located between the kitchen and the bedroom.
- Porch:** A small porch at the front (left) measuring 8'0" X 10'0".
- Closets:** Several closets are distributed throughout the house, including a large closet in the bedroom and a closet in the home office.



PARTIAL MAIN LEVEL PLAN - OPTIONAL DECK #1

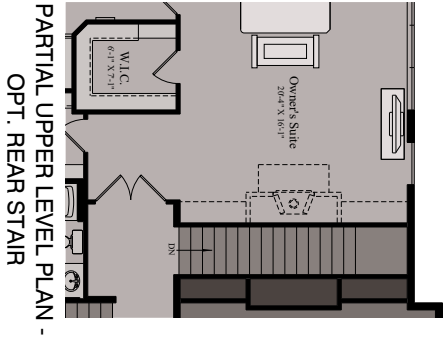


PARTIAL MAIN LEVEL PLAN - OPTIONAL DECK #2

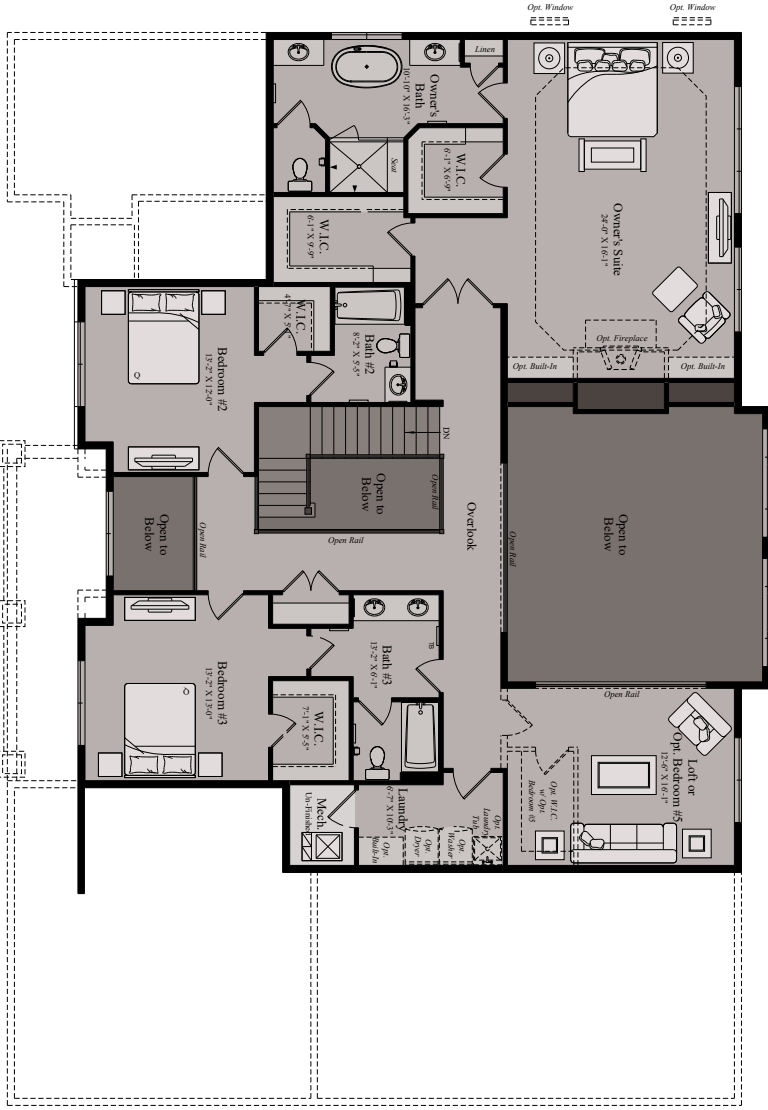


06/04/2019

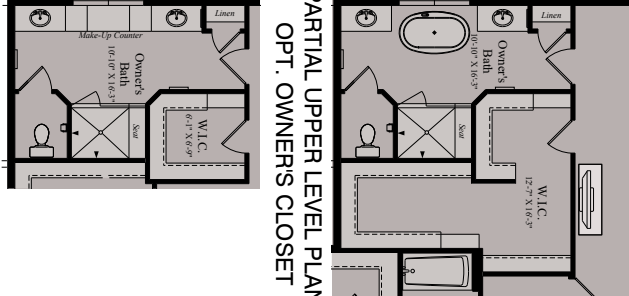
Design and details are the exclusive property of Worland Corporation. Unauthorized use is strictly prohibited. Actual product and specifications may vary in dimension or detail from these drawings and are subject to change without notice. Window and door locations vary per elevation. MHBR No. 351.4
Finished square footage calculations for this house were made based on plan dimensions only and may vary from the finished square footage of the house as built. Areas calculated per the American National Standard For Single-Family Residential Buildings - Approved June 2013: ANSI Z765-2013



PARTIAL UPPER LEVEL PLAN -
OPT. REAR STAIR



UPPER LEVEL ELEVATION "A"



PARTIAL UPPER LEVEL PLAN -
OPT. OWNERS CLOSET

PARTIAL UPPER LEVEL PLAN -
OPT. OWNERS BATH
w/ MAKEUP COUNTER

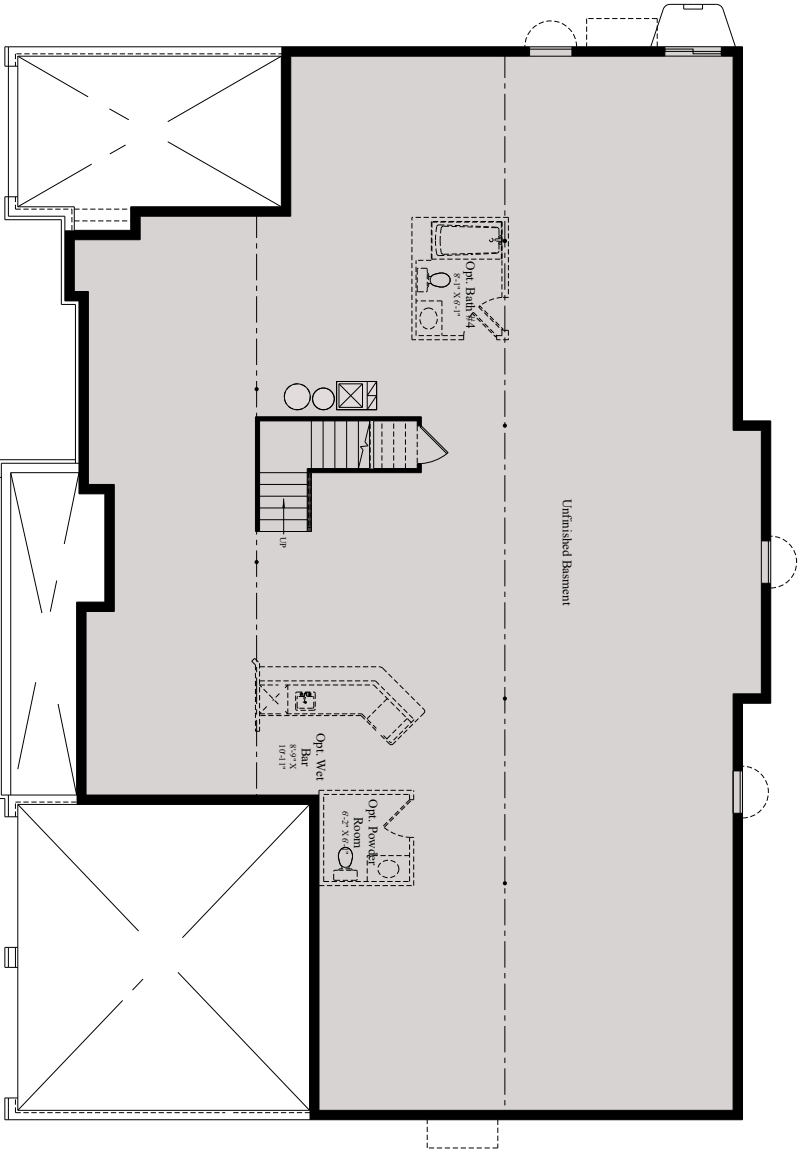


06/04/2019

Design and details are the exclusive property of Worrald Corporation. Unauthorized use is strictly prohibited. Actual product and specifications may vary in dimension or detail from these drawings and are subject to change without notice. Window and door locations vary per elevation. MIBR No. 3314. Finished square footage calculations for this house were made based on plan dimensions only and may vary from the finished square footage of the house as built. Areas calculated per the American National Standard For Single-Family Residential Buildings. Approved June 2013. ANSI Z765-2013



WALK-OUT CONDITION LOWER LEVEL

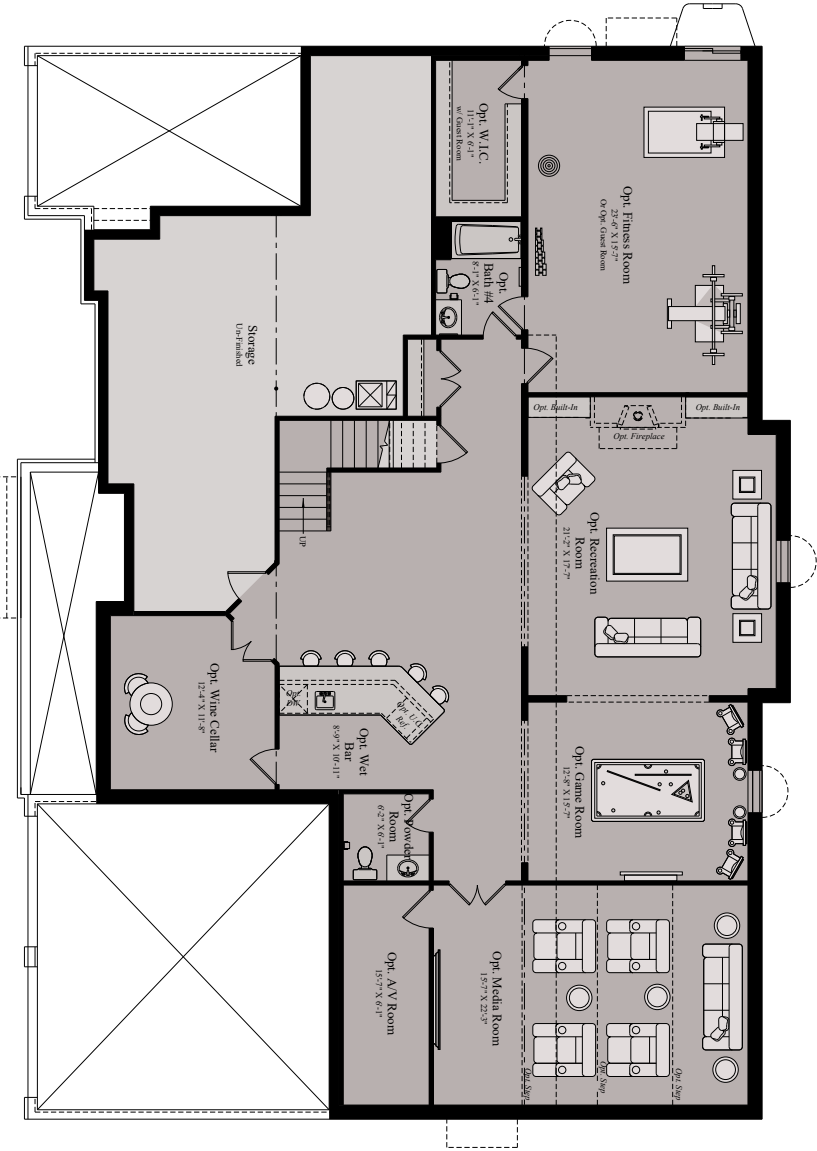


IN-GROUND CONDITION - LOWER LEVEL ELEVATION "A"

Design and details are the exclusive property of Wornald Corporation. Unauthorized use is strictly prohibited. Actual product and specifications may vary in dimension or detail from these drawings and are subject to change without notice. Window and door locations vary per elevation. MTHB No. 3414. Finished square footage calculations for this house were made based on plan dimensions only and may vary from the finished square footage of the house as built. Areas calculated per the American National Standard For Single-Family Residential Buildings. Approved June 2013; ANSI Z765-2013



WALK-OUT CONDITION - OPT. FINISHED LOWER LEVEL

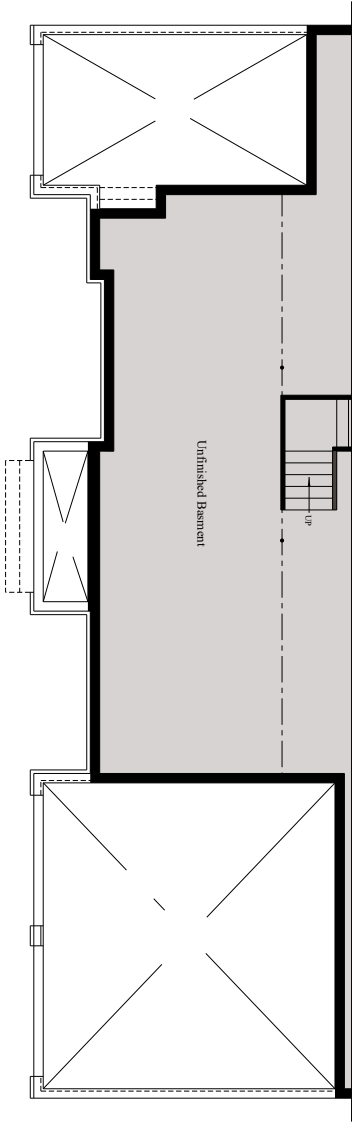


IN-GROUND CONDITION - OPT. FINISHED LOWER LEVEL

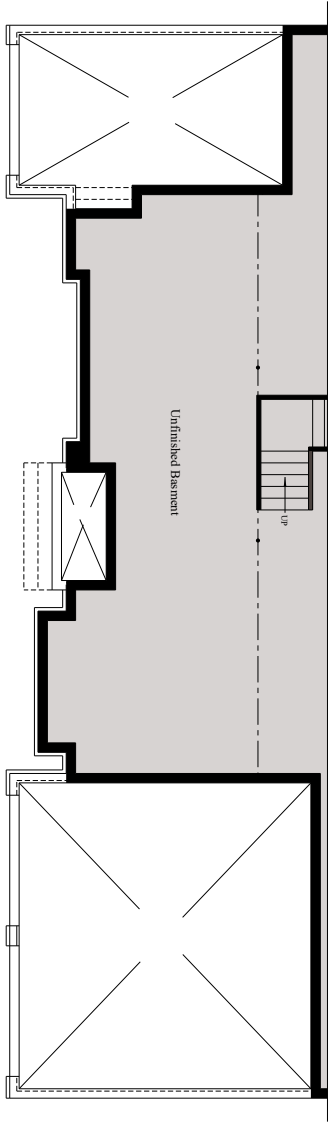
Design and details are the exclusive property of Wornald Corporation. Unauthorized use is strictly prohibited. Actual product and specifications may vary in dimension or detail from these drawings and are subject to change without notice. Window and door locations vary per elevation. MIBR No. 3414. Finished square footage calculations for this house were made based on plan dimensions only and may vary from the finished square footage of the house as built. Area calculated per the American National Standard For Single-Family Residential Buildings. Approved June 2013; ANSI Z765-2013.



06/04/2019



LOWER LEVEL ELEVATION "B"

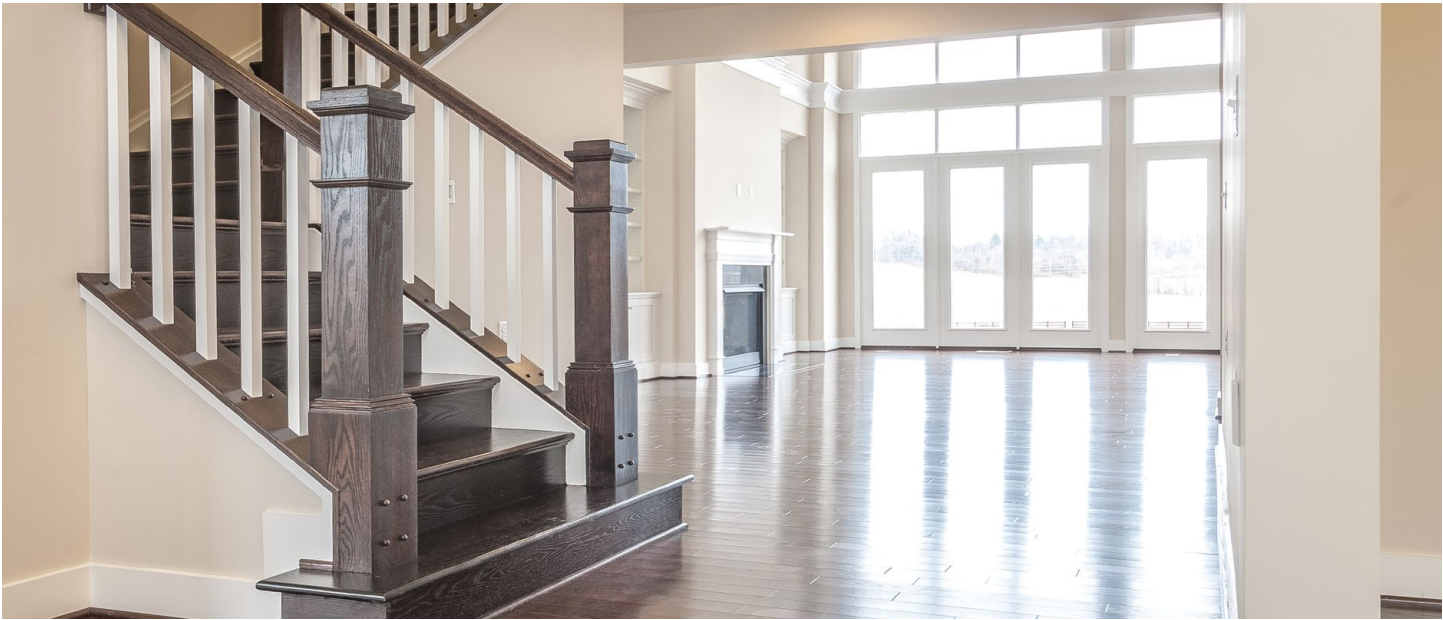


LOWER LEVEL ELEVATION "C"



06/04/2019

Design and details are the exclusive property of Worland Corporation. Unauthorized use is strictly prohibited. Actual product and specifications may vary in dimension or detail from these drawings and are subject to change without notice. Window and door locations vary per elevation. MTHB No. 3414. Finished square footage calculations for this house were made based on plan dimensions only and may vary from the finished square footage of the house as built. Areas calculated per the American National Standard For Single-Family Residential Buildings. Approved June 2013; ANSI Z765-2003







LOVE
WHERE
YOU
LIVE

W
W O R M A L D

www.wormald.com