

THE KADENCE



THE GROVE Luxury Attached Residences

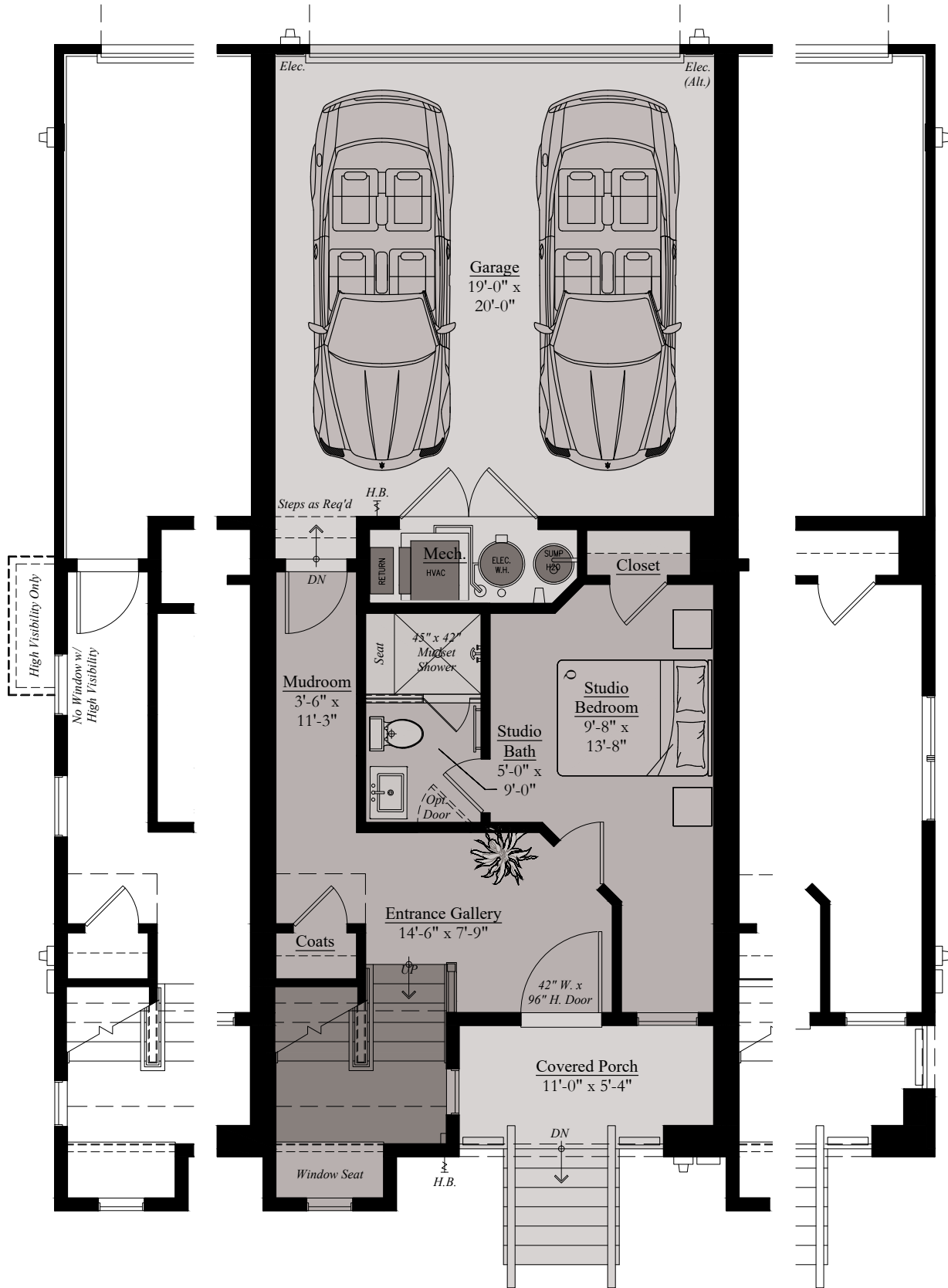
Candice Grams, Sales Manager
301.691.8029 | thegrove@wormald.com
177 Kentlands Blvd., Suite 200, Gaithersburg, MD 20878
Open Daily 11 a.m. - 5 p.m. or by appointment

W
WORMALD

Brokers welcome.
MHBR No. 9221 (PSTA
Residential, LLC). Prices
are rounded and subject
to change without notice.



THE KADENCE | STUDIO LEVEL



Typ. End

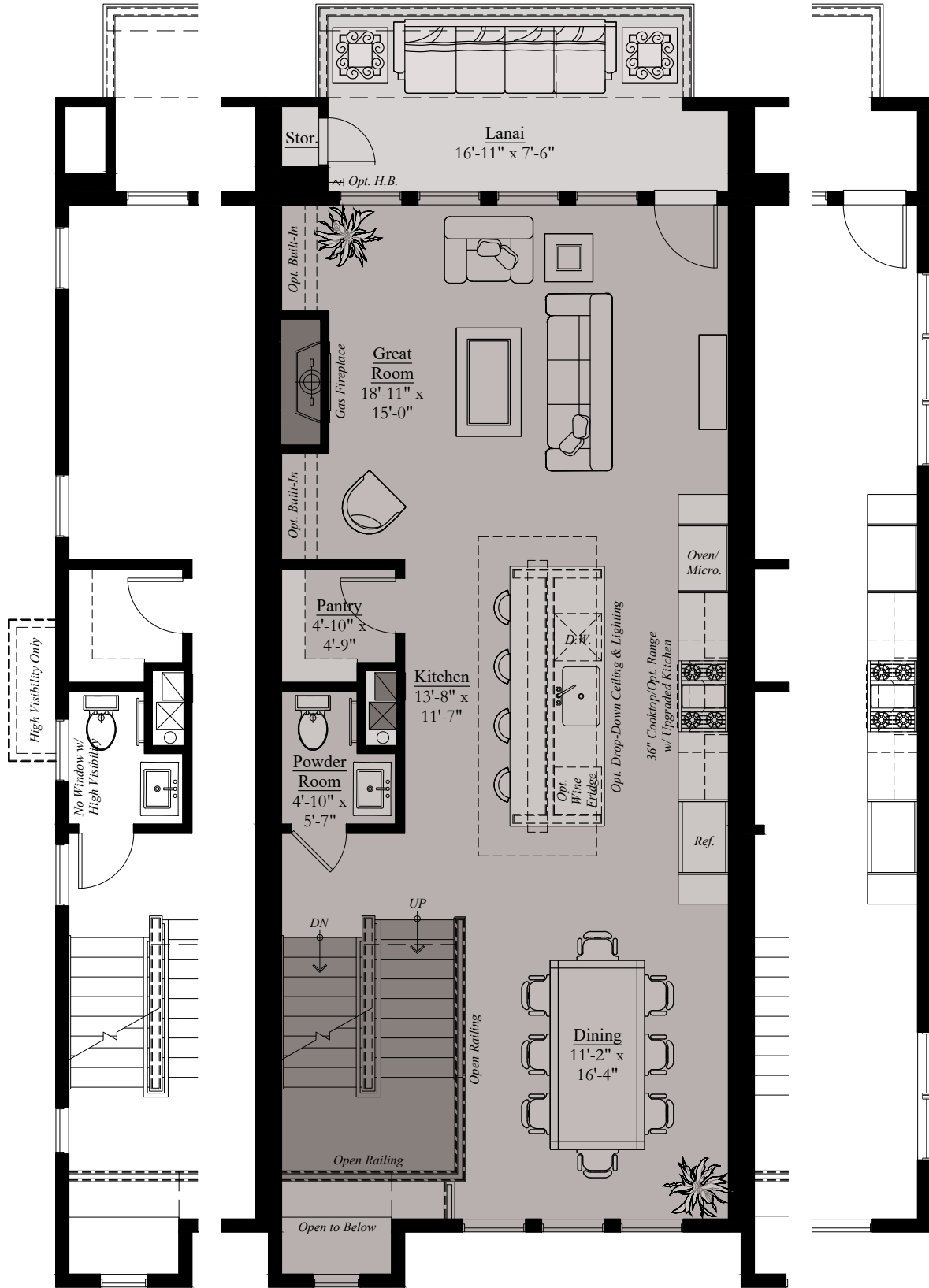
Typ. Studio Level

Typ. End

THE AMARI

Architectural drawings are proprietary to Wormald Corporation. Unauthorized use or duplication of floor plans, concepts, or elevations is strictly prohibited. **Architectural designs are approximate artist's renderings and are for illustrative purposes only. Actual design and detail will vary from what is shown and are subject to change without notice.** Landscape and furniture is for illustrative purposes only. Optional areas are illustrated. Windows, door locations, and square footage may vary per elevation. Please consult Sales Manager for details. © 2024 Wormald Corporation.

THE KADENCE | MAIN LEVEL



Typ. End

Typ. Main Level

Typ. End

THE AMARI

Architectural drawings are proprietary to Wormald Corporation. Unauthorized use or duplication of floor plans, concepts, or elevations is strictly prohibited. **Architectural designs are approximate artist's renderings and are for illustrative purposes only. Actual design and detail will vary from what is shown and are subject to change without notice.** Landscape and furniture is for illustrative purposes only. Optional areas are illustrated. Windows, door locations, and square footage may vary per elevation. Please consult Sales Manager for details. © 2024 Wormald Corporation.

THE KADENCE | UPPER LEVEL



Typ. End

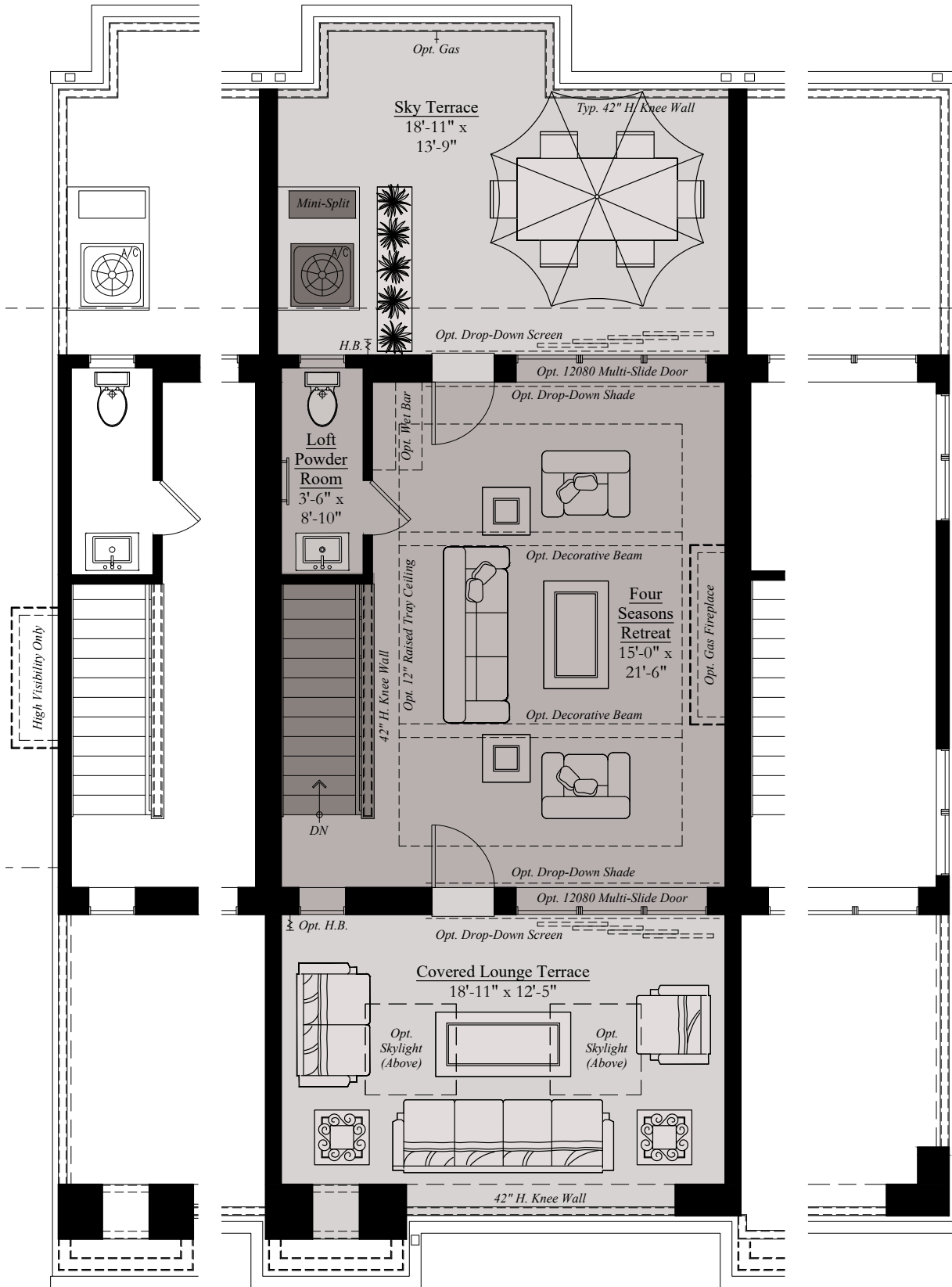
Typ. Upper Level

Typ. End

THE AMARI

Architectural drawings are proprietary to Wormald Corporation. Unauthorized use or duplication of floor plans, concepts, or elevations is strictly prohibited. **Architectural designs are approximate artist's renderings and are for illustrative purposes only. Actual design and detail will vary from what is shown and are subject to change without notice.** Landscape and furniture is for illustrative purposes only. Optional areas are illustrated. Windows, door locations, and square footage may vary per elevation. Please consult Sales Manager for details. © 2024 Wormald Corporation.

THE KADENCE | LOFT LEVEL



Typ. End

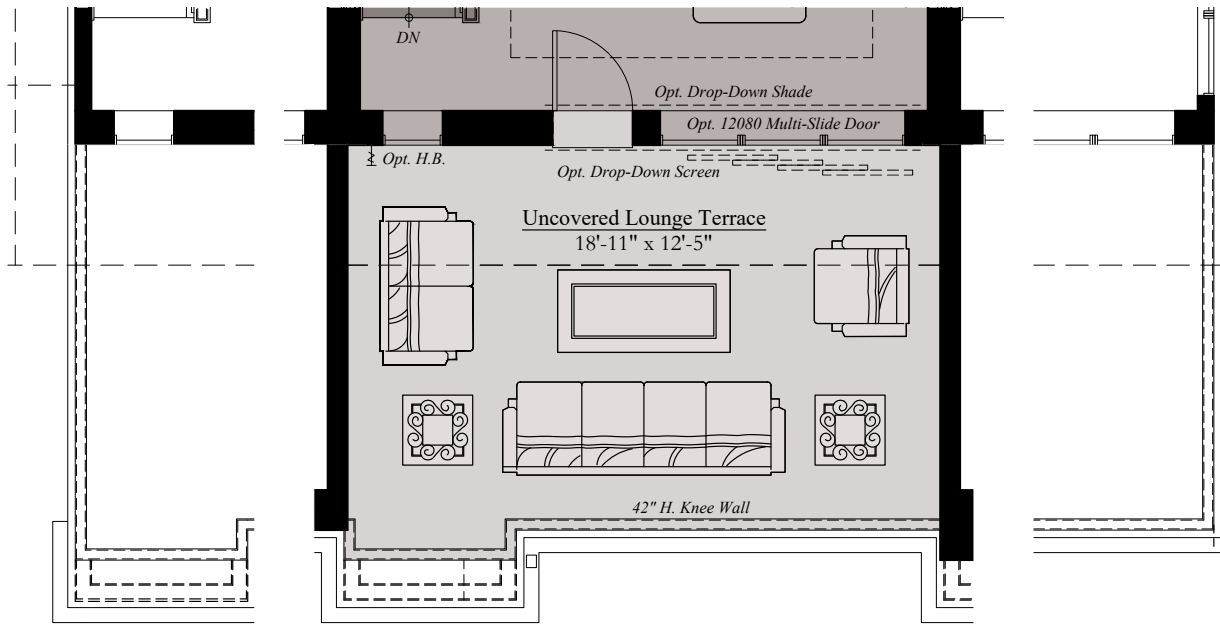
Typ. 'A', 'B', & 'E' Loft Level

Typ. End

THE AMARI

Architectural drawings are proprietary to Wormald Corporation. Unauthorized use or duplication of floor plans, concepts, or elevations is strictly prohibited. **Architectural designs are approximate artist's renderings and are for illustrative purposes only. Actual design and detail will vary from what is shown and are subject to change without notice.** Landscape and furniture is for illustrative purposes only. Optional areas are illustrated. Windows, door locations, and square footage may vary per elevation. Please consult Sales Manager for details. © 2024 Wormald Corporation.

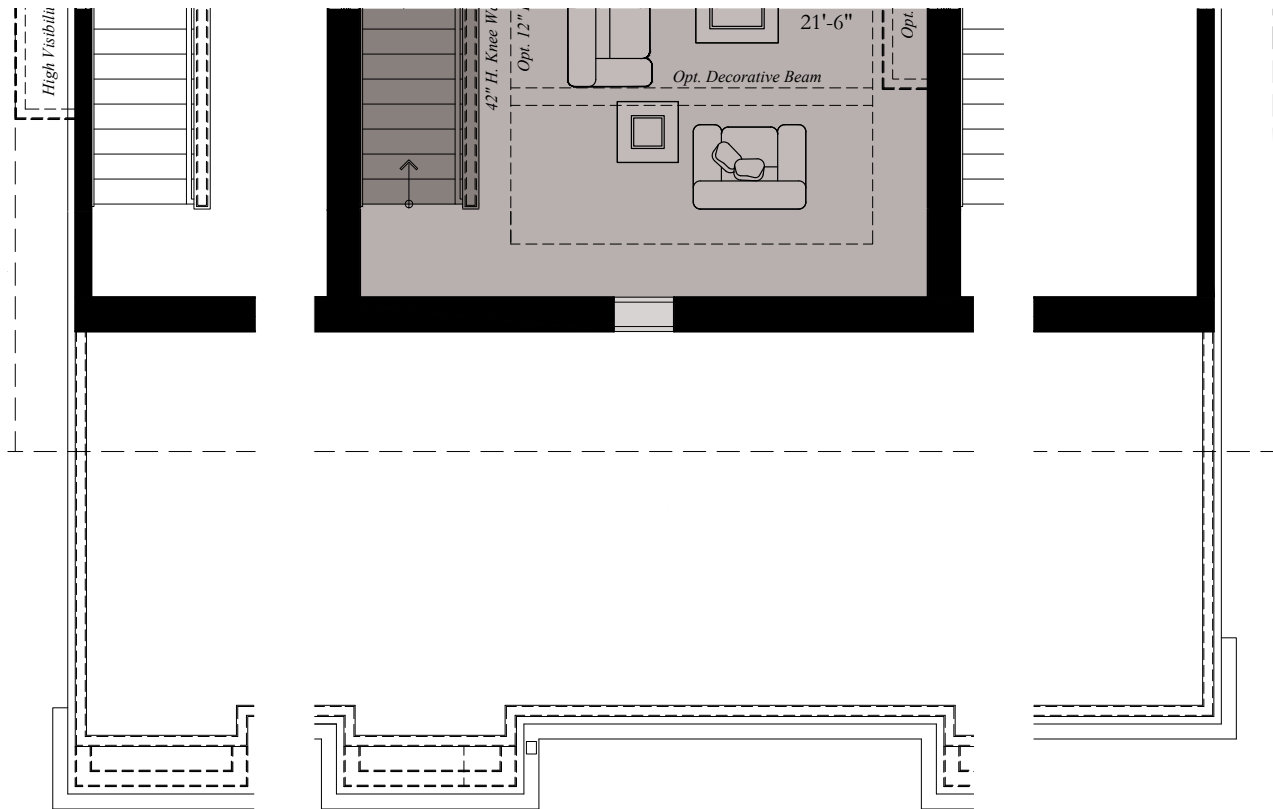
THE KADENCE | ALTERNATE LOFTS



Typ. End

Typ. 'C' & 'D' Loft Level

Typ. End



Typ. End

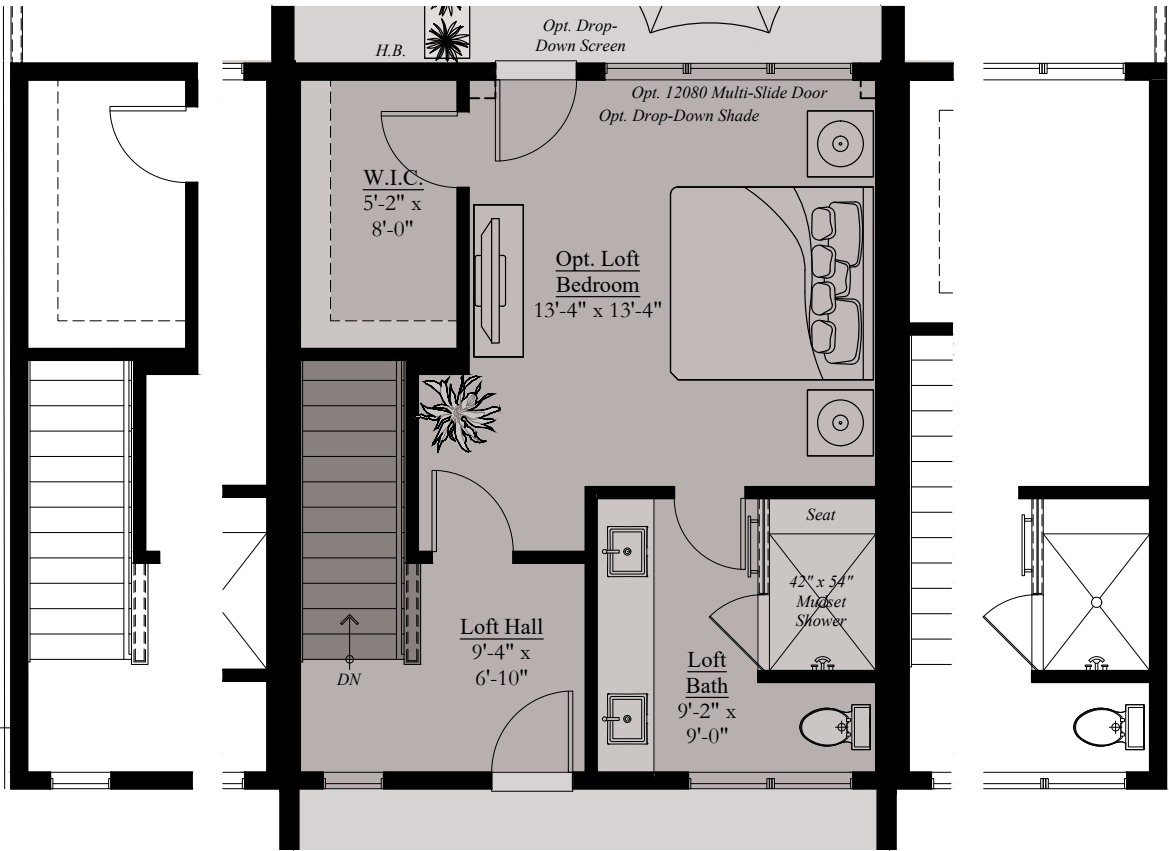
Typ. 'T', 'J', 'K', 'L', & 'M' Loft Level

Typ. End

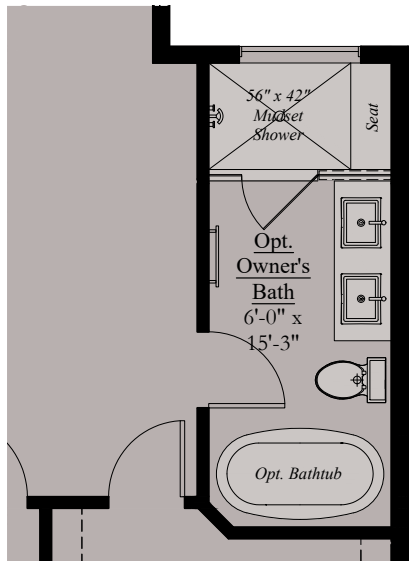
THE AMARI

Architectural drawings are proprietary to Wormald Corporation. Unauthorized use or duplication of floor plans, concepts, or elevations is strictly prohibited. **Architectural designs are approximate artist's renderings and are for illustrative purposes only. Actual design and detail will vary from what is shown and are subject to change without notice.** Landscape and furniture is for illustrative purposes only. Optional areas are illustrated. Windows, door locations, and square footage may vary per elevation. Please consult Sales Manager for details. © 2024 Wormald Corporation.

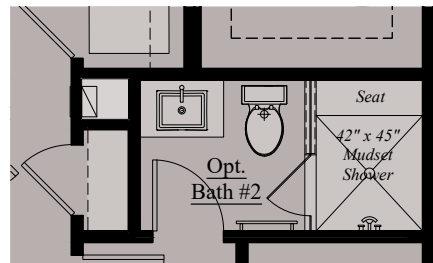
THE KADENCE | OPTIONS



Typ. End Opt. Loft Level Suite w/ Front Terrace Typ. End



Opt. Owner's Bath



Opt. Bath #2

THE AMARI

Architectural drawings are proprietary to Wormald Corporation. Unauthorized use or duplication of floor plans, concepts, or elevations is strictly prohibited. **Architectural designs are approximate artist's renderings and are for illustrative purposes only. Actual design and detail will vary from what is shown and are subject to change without notice.** Landscape and furniture is for illustrative purposes only. Optional areas are illustrated. Windows, door locations, and square footage may vary per elevation. Please consult Sales Manager for details. © 2024 Wormald Corporation.

LOVE
WHERE
YOU
LIVE

W
W O R M A L D

www.wormald.com