

# THE HATHAWAY

2,981 - 4,464 SQ FT LIVING SPACE | 223 SQ FT OUTDOOR LIVING SPACE



<No data from link>

Elevation D



Elevation C



Elevation B



Elevation A

Glass doors are optional

## ROSEHAVEN

The Modern Farmhouse Collection

8774 Rosehaven Lane, Frederick, MD 21701

rosehaven@wormald.com | 301.631.0335

Open Daily 11 a.m. - 5 p.m.

SALES MANAGER Cindy Van Meter · 240.315.6417

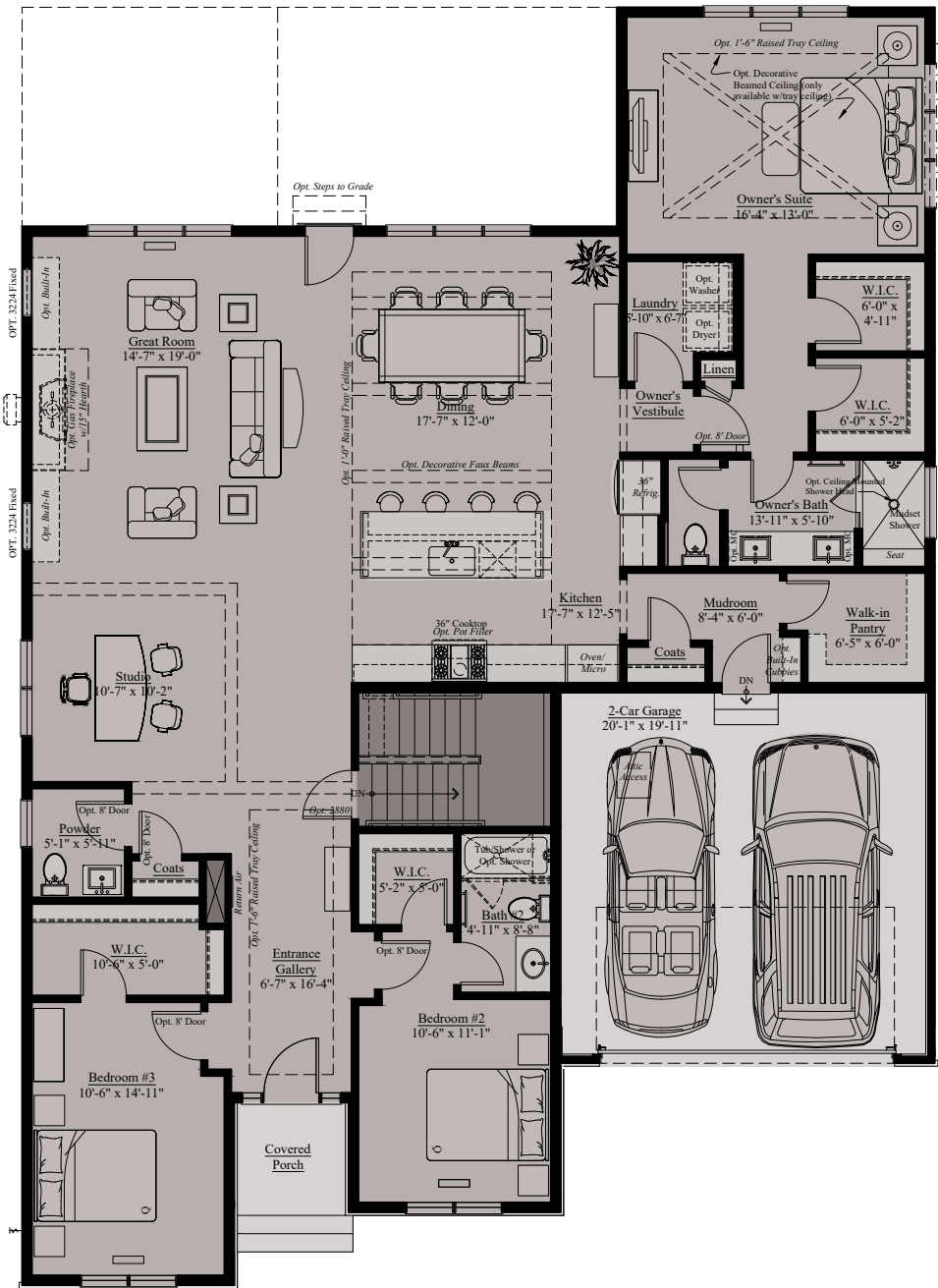
SALES MANAGER Lisa Stuart · 240.446.2803

W  
WORMALD

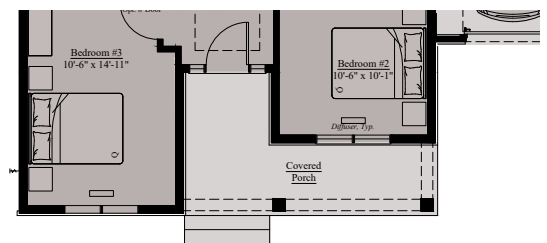
Brokers welcome. MHBR  
No. 8652 and 8819. Prices  
are rounded and subject  
to change without notice.



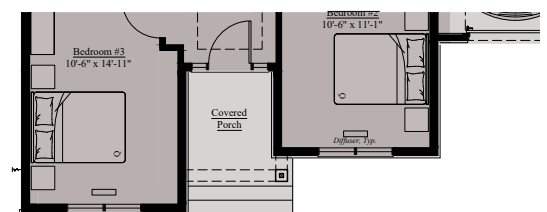
# THE HATHAWAY | MAIN LEVEL



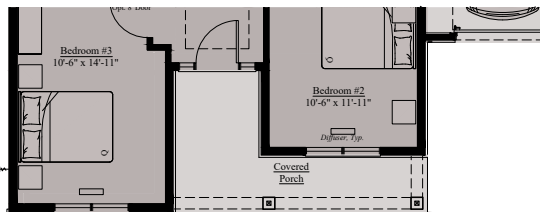
*Main Level - Elevation A*



*Main Level - Elevation B*



*Main Level - Elevation C*



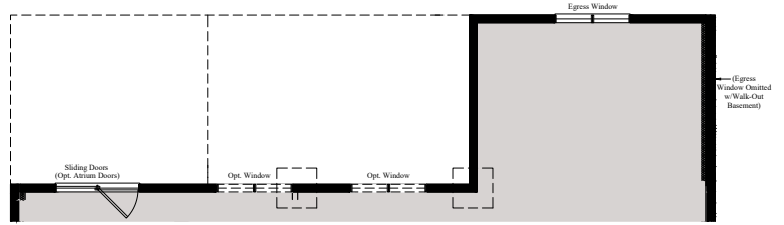
*Main Level - Elevation D*

**THE HATHAWAY**

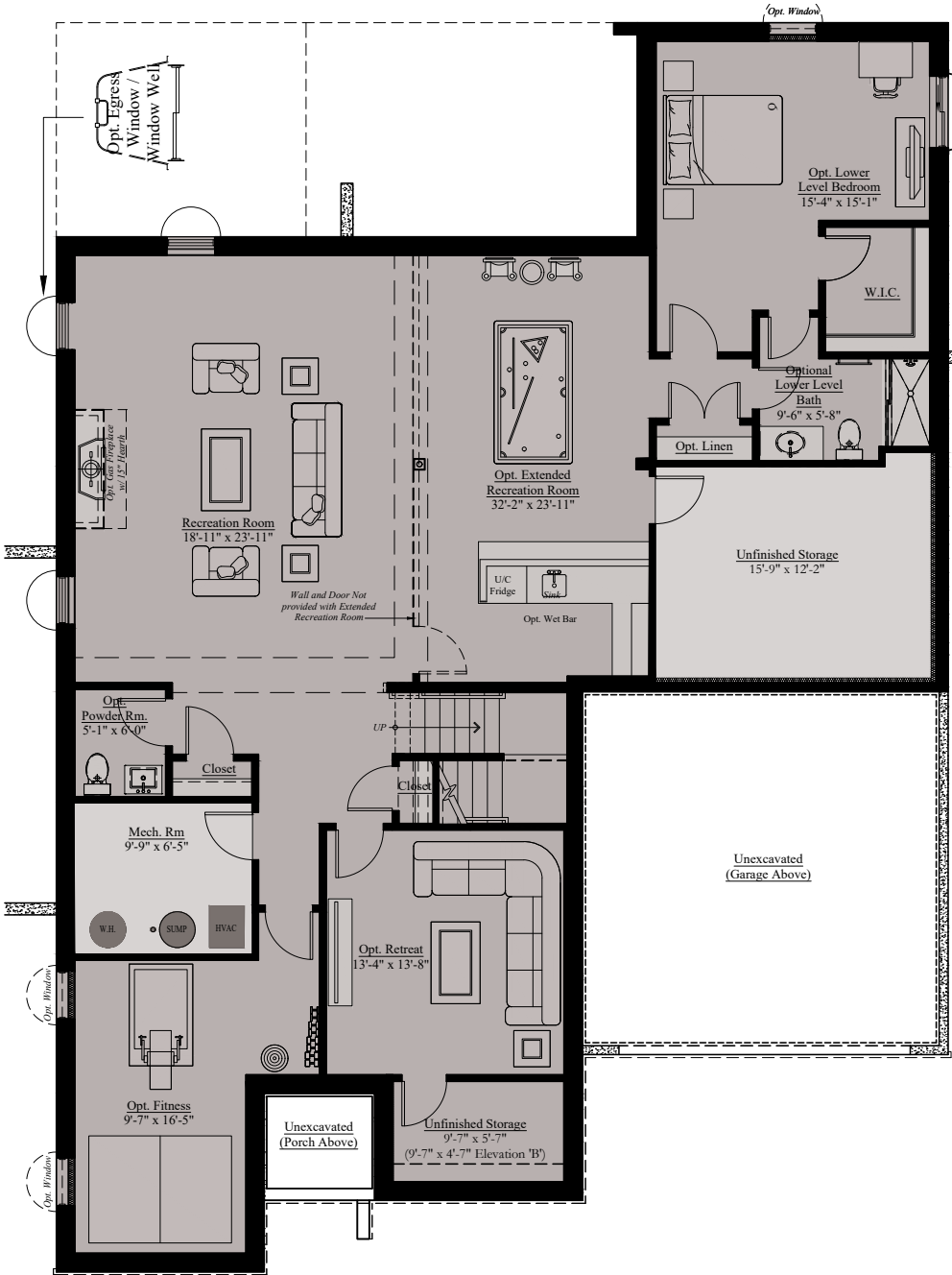
Architectural drawings are proprietary to Wormald Corporation. Unauthorized use or duplication of floor plans, concepts, or elevations is strictly prohibited. **Architectural designs are approximate artist's renderings and are for illustrative purposes only. Actual design and detail will vary from what is shown and are subject to change without notice.** Landscape and furniture is for illustrative purposes only. Optional areas are illustrated. Windows, door locations, and square footage may vary per elevation. Please consult Sales Manager for details. © 2024 Wormald Corporation.



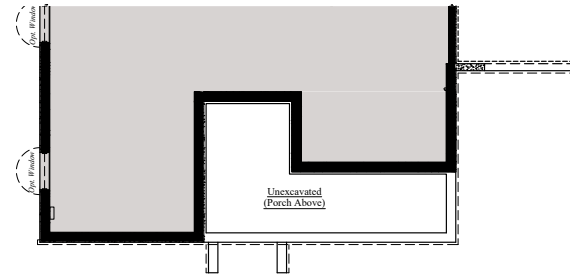
# THE HATHAWAY | LOWER LEVEL W/ OPTIONS



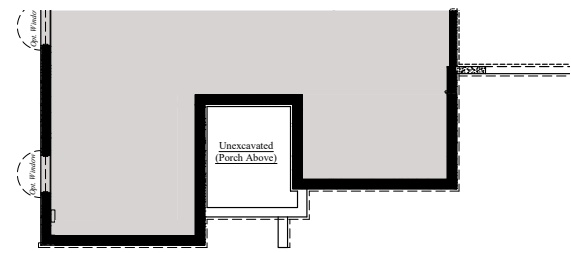
Walk-Out Basement



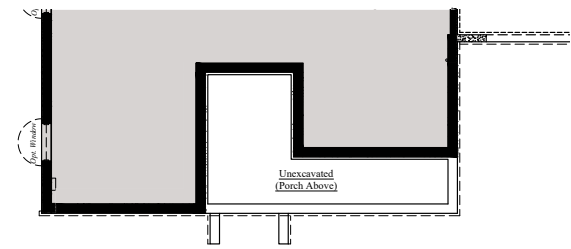
Finished Basement Options Plan



Lower Level - Elevation B



Lower Level - Elevation C

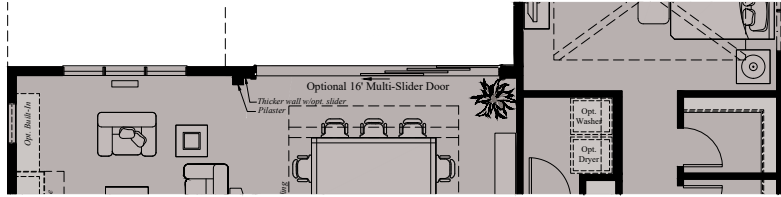


Lower Level - Elevation D

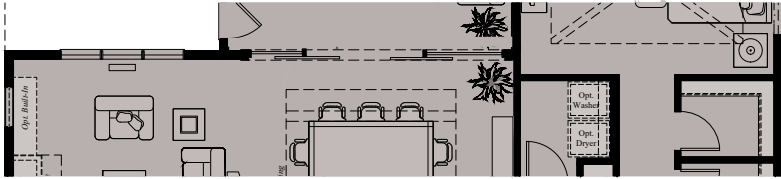
## THE HATHAWAY

Architectural drawings are proprietary to Wormald Corporation. Unauthorized use or duplication of floor plans, concepts, or elevations is strictly prohibited. **Architectural designs are approximate artist's renderings and are for illustrative purposes only. Actual design and detail will vary from what is shown and are subject to change without notice.** Landscape and furniture is for illustrative purposes only. Optional areas are illustrated. Windows, door locations, and square footage may vary per elevation. Please consult Sales Manager for details. © 2024 Wormald Corporation.

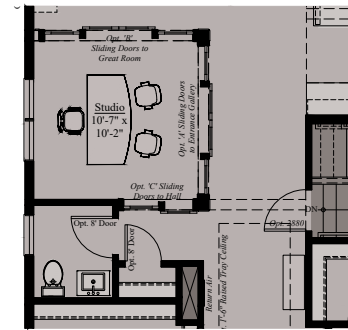
# THE HATHAWAY | MAIN LEVEL OPTIONS



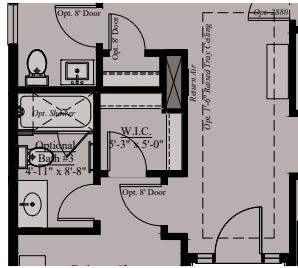
*Main Level - Opt. Multi-Slider*



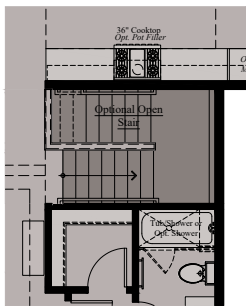
*Main Level - Opt. Sliding Barn Doors  
with Optional Sunroom Only*



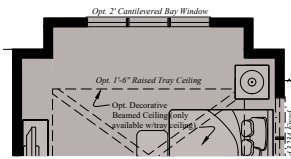
*Opt. Enclosed Studio w/  
Sliding Door Options*



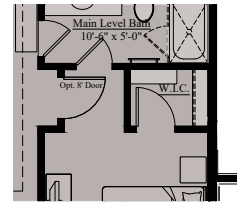
*Main Level -  
Opt. Bath #3*



*Main Level -  
Opt. Open Stair*

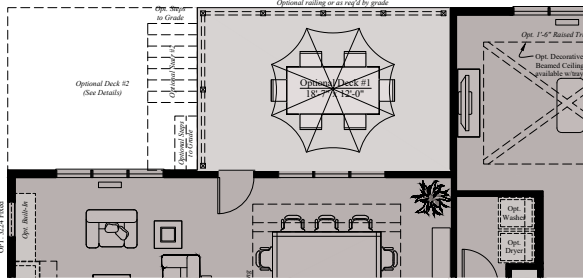


*Opt. Box Bay at  
Owner's Suite*

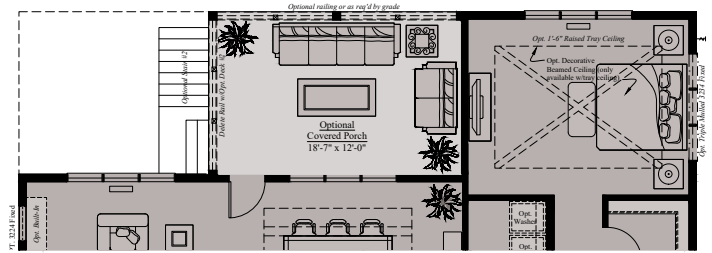


*Opt. Main Level Bath*

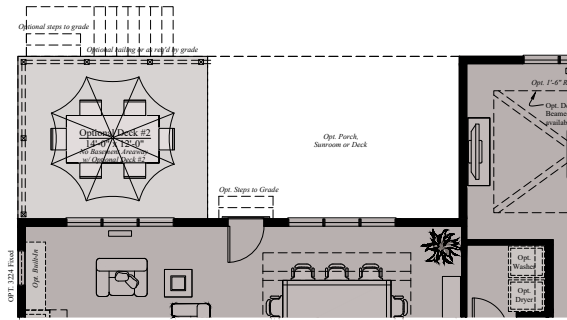
# THE HATHAWAY | SUNROOM & DECKS



Main Level - Opt. Deck# 1

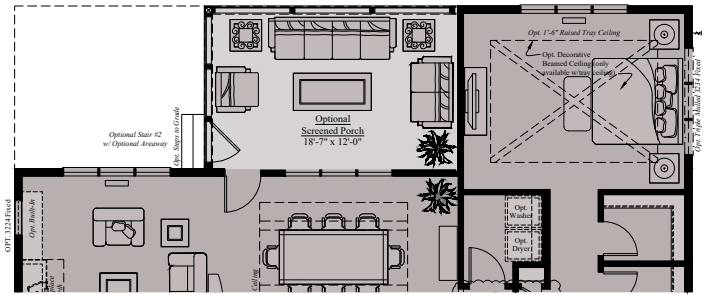


Main Level - Opt. Covered Deck

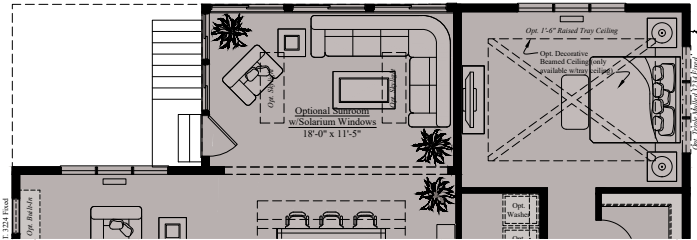


Main Level - Opt. Deck# 2

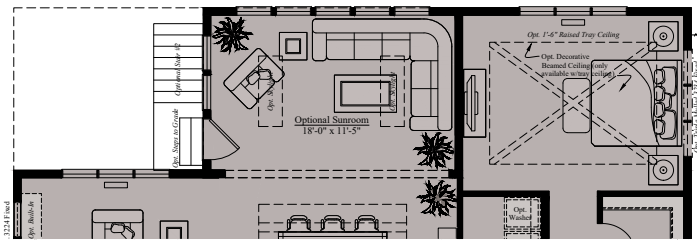
(Available w/ Opt. Deck #1, Covered Deck, Screened Deck or Sunroom)



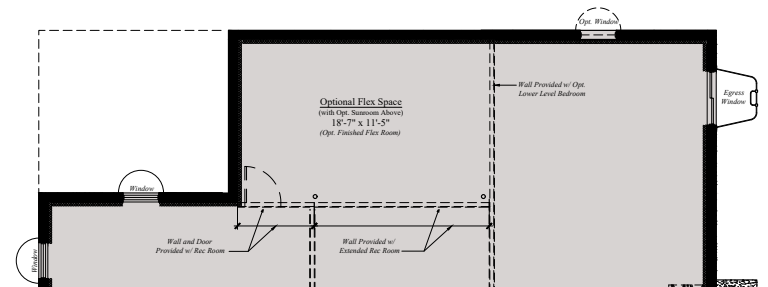
Main Level - Opt. Screened Porch



Main Level - Opt. Sunroom w/ Opt. Solarium Windows



Main Level - Opt. Sunroom



Lower Level - Flex Room w/ Opt. Sunroom

## THE HATHAWAY

Architectural drawings are proprietary to Wormald Corporation. Unauthorized use or duplication of floor plans, concepts, or elevations is strictly prohibited. **Architectural designs are approximate artist's renderings and are for illustrative purposes only. Actual design and detail will vary from what is shown and are subject to change without notice.** Landscape and furniture is for illustrative purposes only. Optional areas are illustrated. Windows, door locations, and square footage may vary per elevation. Please consult Sales Manager for details. © 2024 Wormald Corporation.

## NOTES:

## NOTES:

**LOVE**  
WHERE  
**YOU**  
LIVE

**W**  
W O R M A L D

[www.wormald.com](http://www.wormald.com)