

# THE ESTATE HOME

WITH FIRST FLOOR OWNER'S SUITE AND REGENCY PARK PACKAGE

5,438 SQ. FT. LIVING SPACE | 670 SQ. FT. OUTDOOR LIVING SPACE



Illustrative rendering of the Estate Home at Crown

**CROWN**  
The Estate Home Collection

Candice Grams, Sales Manager  
301.926.4000 | crown@wormald.com  
312 Steinbeck Avenue, Gaithersburg, MD 20878  
Open Daily 11 a.m. - 5 p.m.  
or by appointment

W  
WORMALD

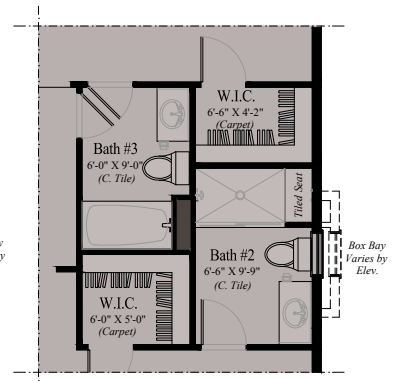
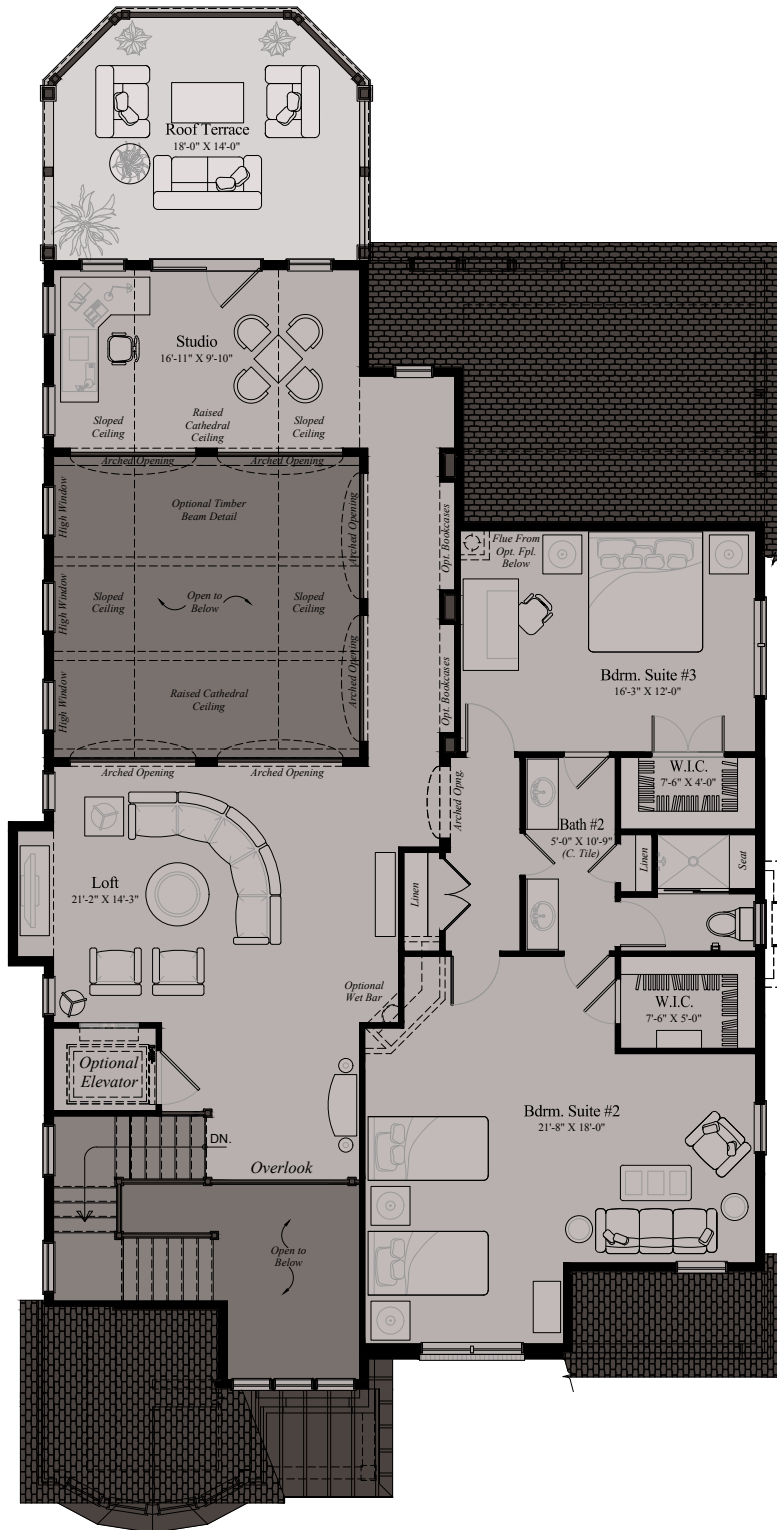
Brokers welcome. MHBR  
No. 7342. Prices are  
rounded and subject to  
change without notice.





**THE ESTATE HOME (REGENCY PARK) - MAIN LEVEL**

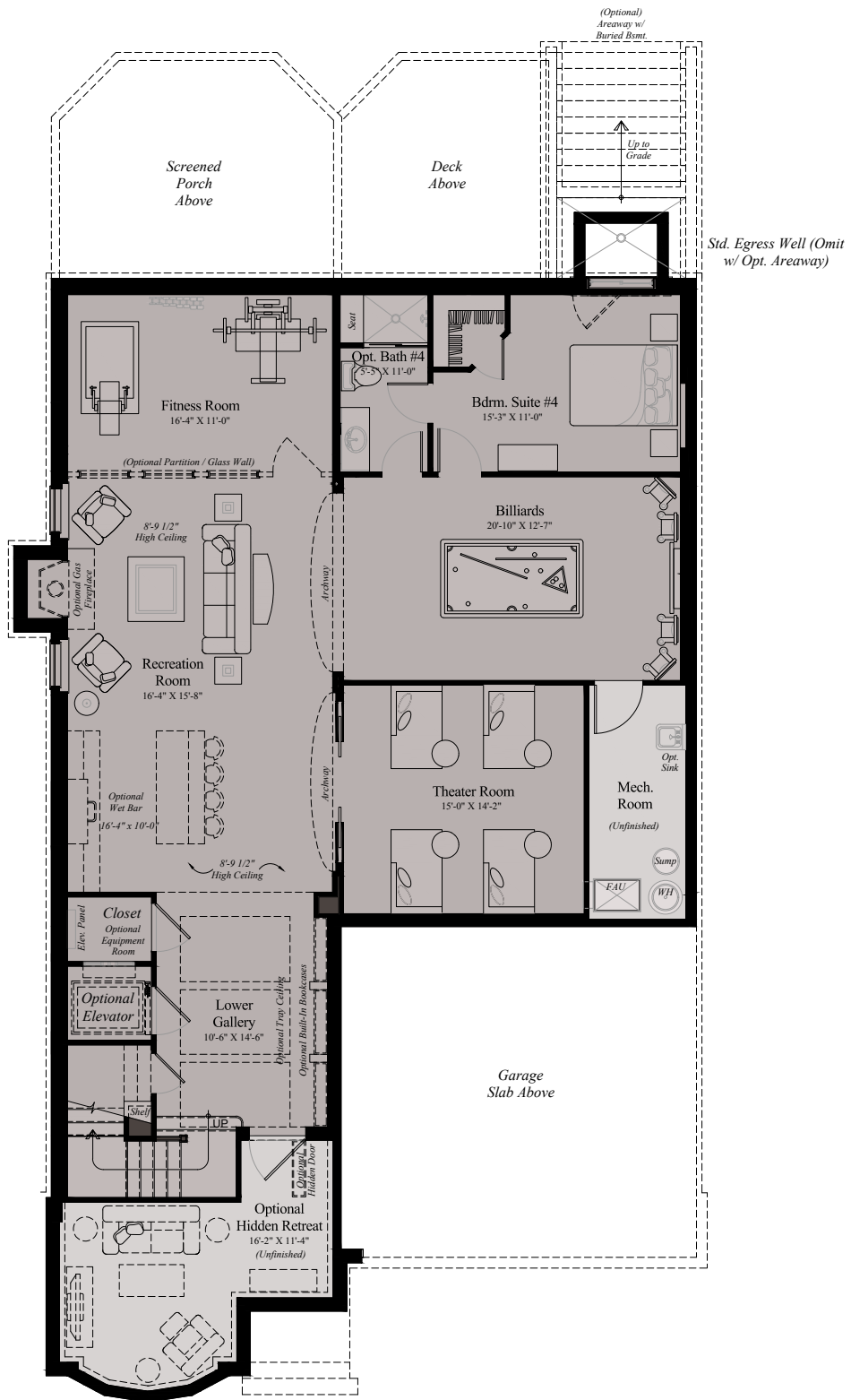
Design and details are the exclusive property of Wormald Homes, Inc. Unauthorized use is strictly prohibited. Actual product and specifications may vary in dimension or detail from these drawings and are subject to change without notice. Window and door locations vary per elevation. MHBR No. 3514



Two Bath Option

## THE ESTATE HOME (REGENCY PARK) - UPPER LEVEL

Design and details are the exclusive property of Wormald Homes, Inc. Unauthorized use is strictly prohibited. Actual product and specifications may vary in dimension or detail from these drawings and are subject to change without notice. Window and door locations vary per elevation. MHB No. 3514



**THE ESTATE HOME (REGENCY PARK) - LOWER LEVEL**

Design and details are the exclusive property of Wormald Homes, Inc. Unauthorized use is strictly prohibited. Actual product and specifications may vary in dimension or detail from these drawings and are subject to change without notice. Window and door locations vary per elevation. MHBR No. 3514