

# THE ESTATE HOME

WITH UPPER LEVEL OWNER'S SUITE AND OAK PARK PACKAGE

5,082 SQ. FT. LIVING SPACE | 575 SQ. FT. OUTDOOR LIVING SPACE



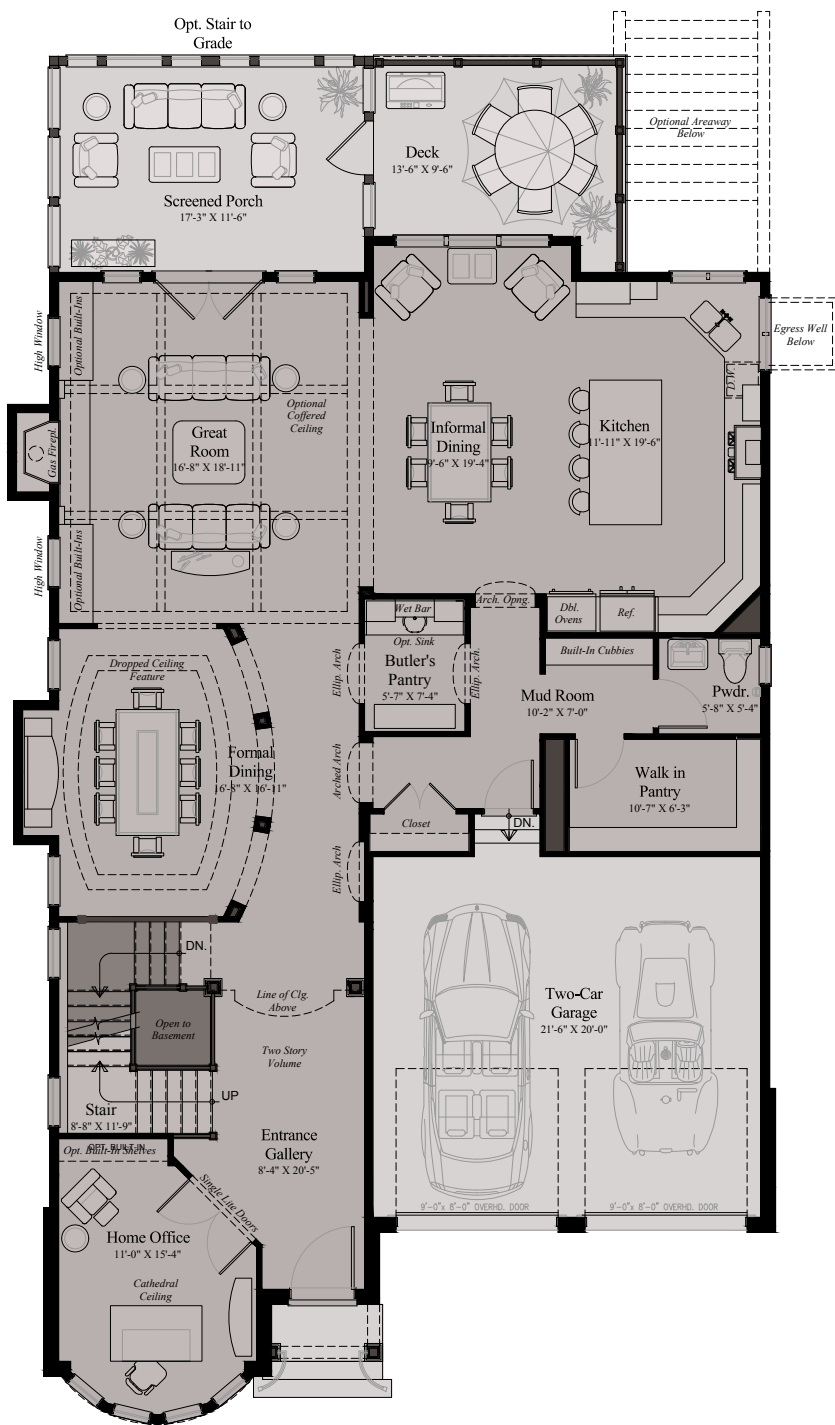
## **CROWN** The Estate Home Collection

Candice Grams, Sales Manager  
540.809.6550 | [crown@wormald.com](mailto:crown@wormald.com)  
803 Crown Park Ave, Gaithersburg, MD 20878  
Open Daily 11 a.m. - 5 p.m.  
or by appointment

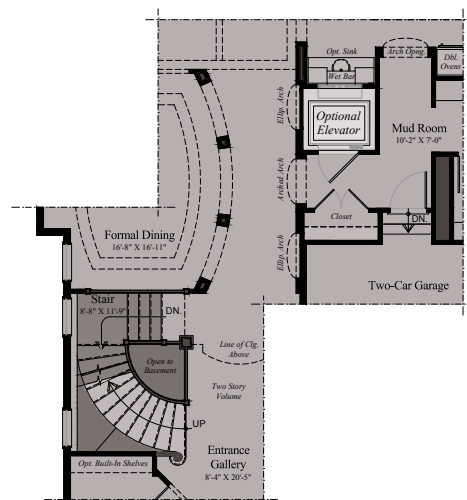
**W**  
**WORMALD**

Brokers welcome. MHBR  
No. 7342. Prices are  
rounded and subject to  
change without notice.





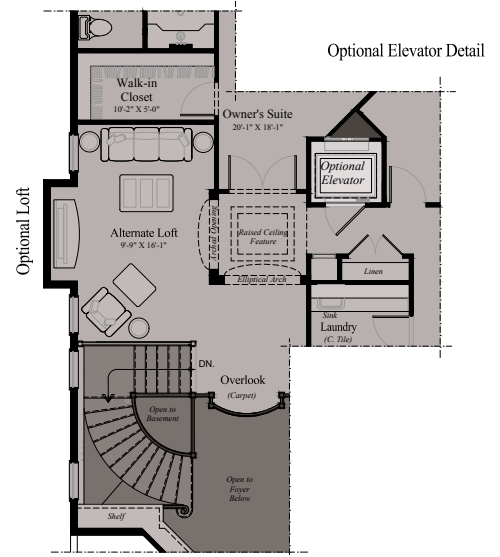
Optional Elevator Detail



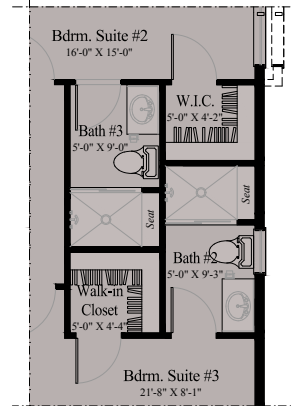
Optional Stair Detail

## THE ESTATE HOME (OAK PARK) - MAIN LEVEL

Design and details are the exclusive property of Wormald Homes, Inc. Unauthorized use is strictly prohibited. Actual product and specifications may vary in dimension or detail from these drawings and are subject to change without notice. Window and door locations vary per elevation. MHBR No. 3514



Optional Stair Detail



Two Bath Option Detail

## THE ESTATE HOME (OAK PARK) - UPPER LEVEL

Design and details are the exclusive property of Wormald Homes, Inc. Unauthorized use is strictly prohibited. Actual product and specifications may vary in dimension or detail from these drawings and are subject to change without notice. Window and door locations vary per elevation. MHBR No. 3514

**W**  
**WORMALD**

