

THE ESTATE HOME

WITH UPPER LEVEL OWNER'S SUITE (HYDE PARK II)

4,479 SQ. FT. LIVING SPACE | 215 SQ. FT. OUTDOOR LIVING SPACE



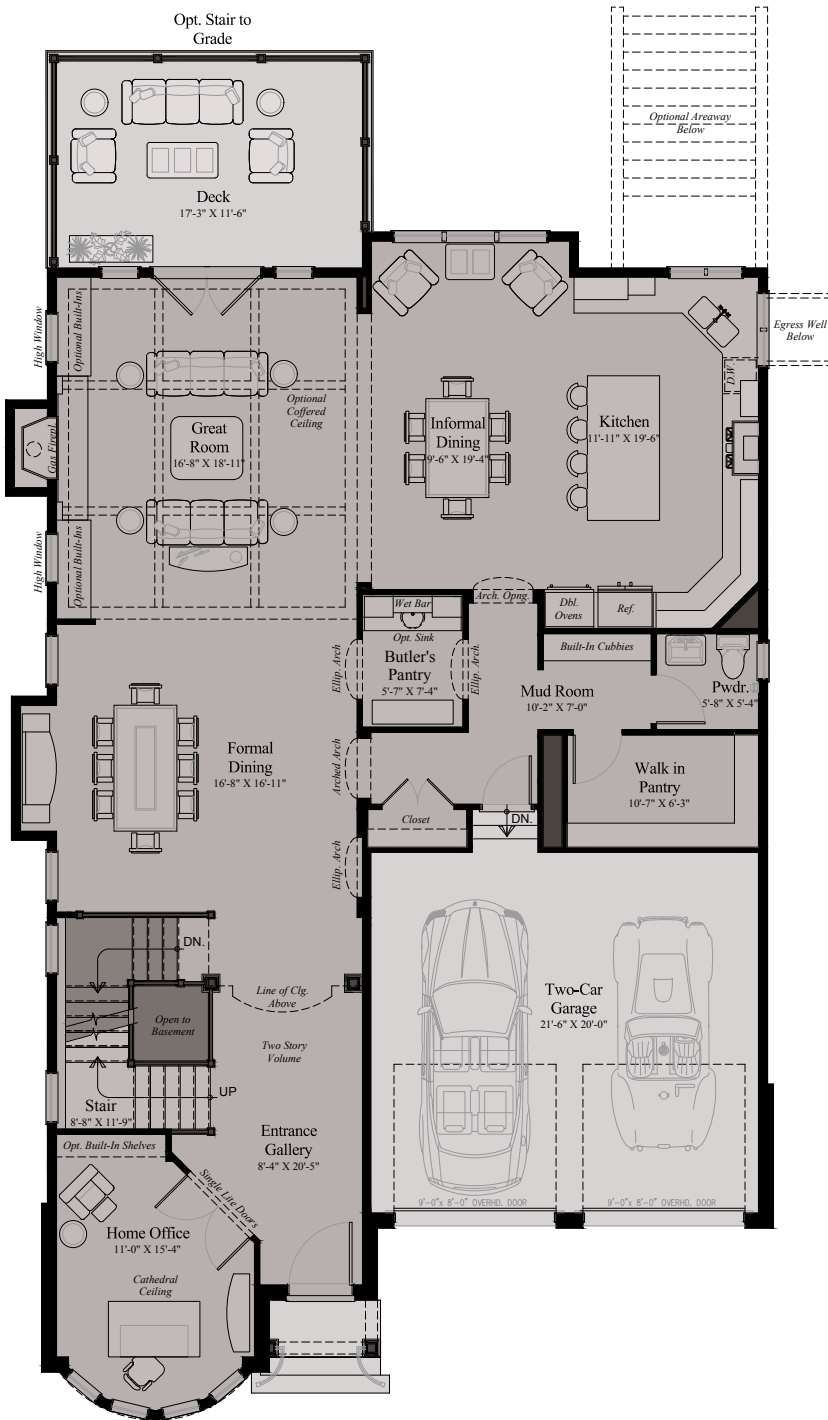
CROWN The Estate Home Collection

Candice Grams, Sales Manager
301.926.4000 | crown@wormald.com
803 Crown Park Ave, Gaithersburg, MD 20878
Open Daily 11 a.m. - 5 p.m.
or by appointment

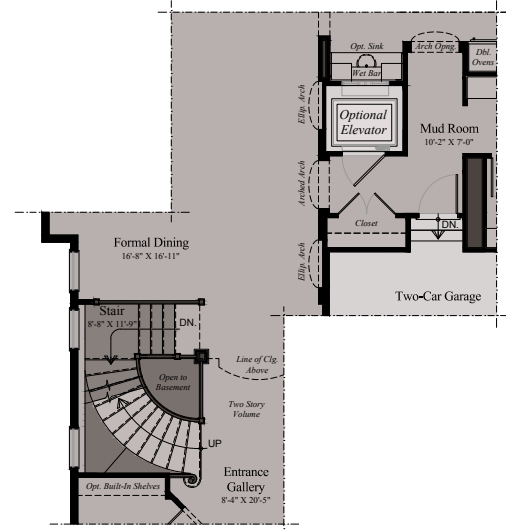
W
ORMALD

Brokers welcome. MHBR
No. 7342. Prices are
rounded and subject to
change without notice.





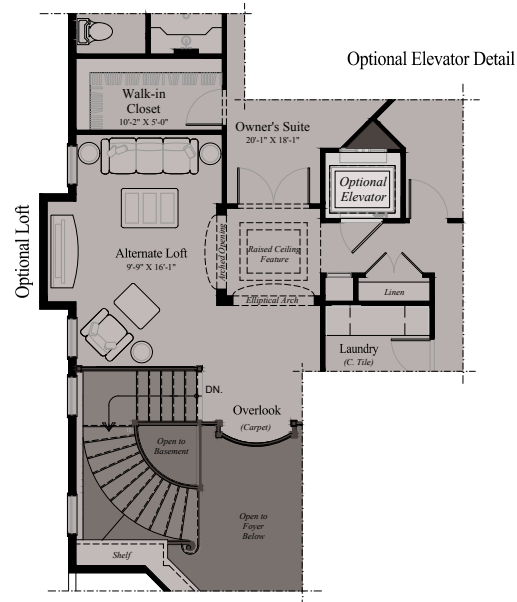
Optional Elevator Detail



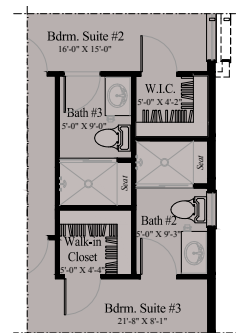
Optional Stair Detail

THE ESTATE HOME (HYDE PARK II) - MAIN LEVEL

Design and details are the exclusive property of Wormald Homes, Inc. Unauthorized use is strictly prohibited. Actual product and specifications may vary in dimension or detail from these drawings and are subject to change without notice. Window and door locations vary per elevation. MHBR No. 3514



Optional Stair Detail

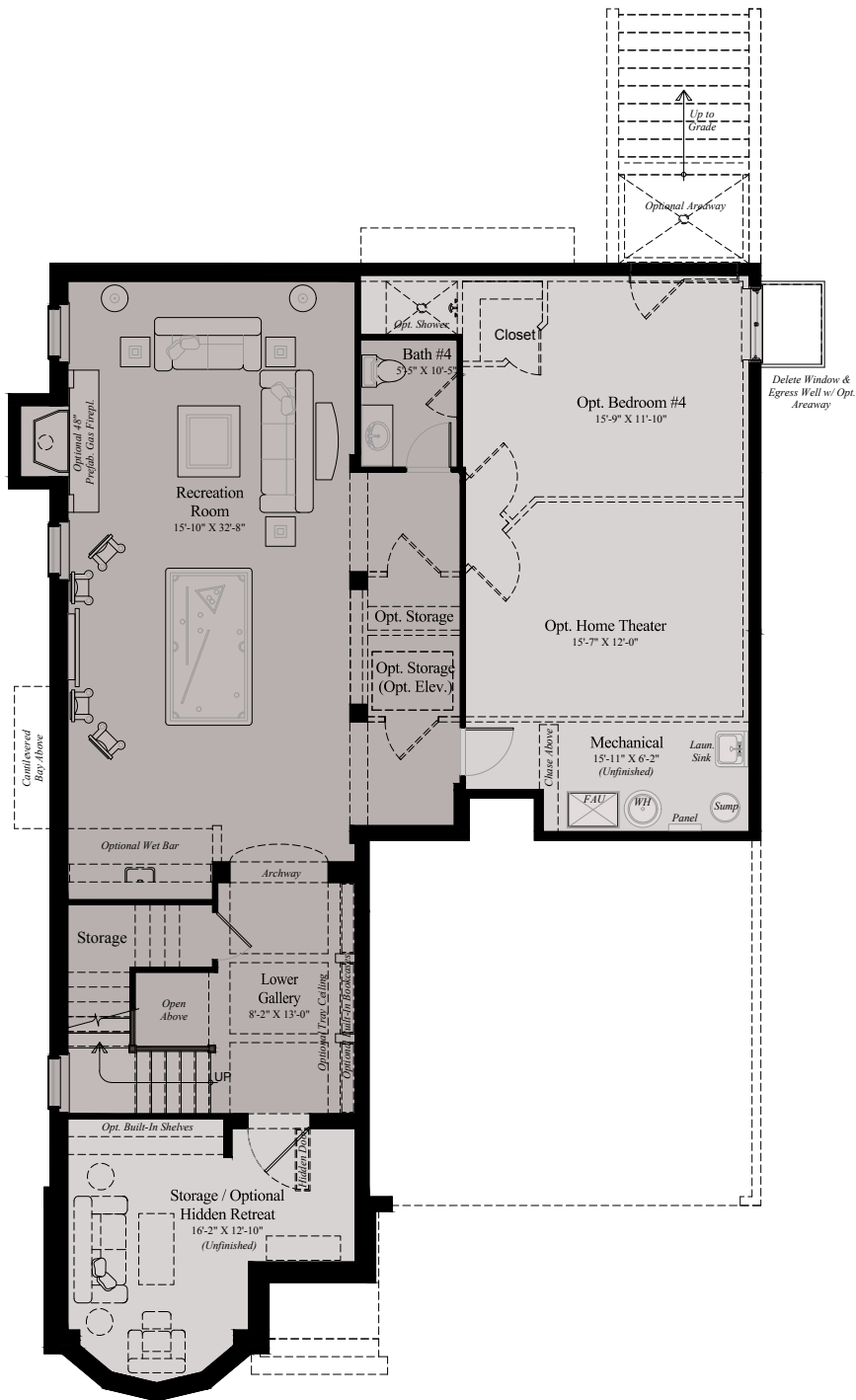


Two Bath Option Detail

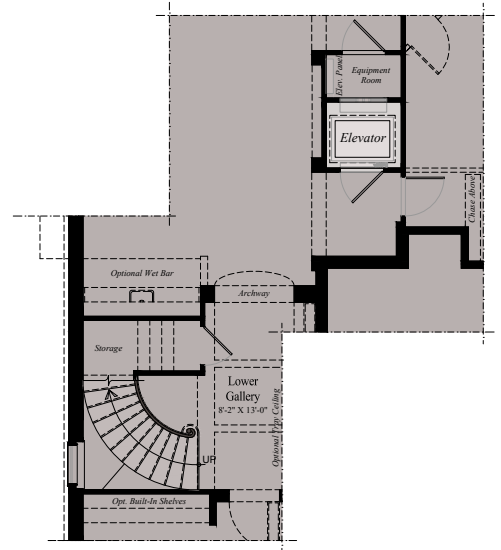
THE ESTATE HOME (HYDE PARK II) - UPPER LEVEL

Design and details are the exclusive property of Wormald Homes, Inc. Unauthorized use is strictly prohibited. Actual product and specifications may vary in dimension or detail from these drawings and are subject to change without notice. Window and door locations vary per elevation. MHBR No. 3514

W
WORMALD



Optional Elevator Detail



Optional Stair Detail

THE ESTATE HOME (HYDE PARK II) - LOWER LEVEL

Design and details are the exclusive property of Wormald Homes, Inc. Unauthorized use is strictly prohibited. Actual product and specifications may vary in dimension or detail from these drawings and are subject to change without notice. Window and door locations vary per elevation. MHBR No. 3514