

THE EMERSON

3,110 - 4,103 SQ FT LIVING SPACE | 180 SQ FT OUTDOOR LIVING SPACE



Elevation D



Elevation C



Elevation B



Elevation A

ROSEHAVEN

The Modern Farmhouse Collection

8774 Rosehaven Lane, Frederick, MD 21701

rosehaven@wormald.com | 301.631.0335

Open Daily 11 a.m. - 5 p.m.

SALES MANAGER Cindy Van Meter · 240.315.6417

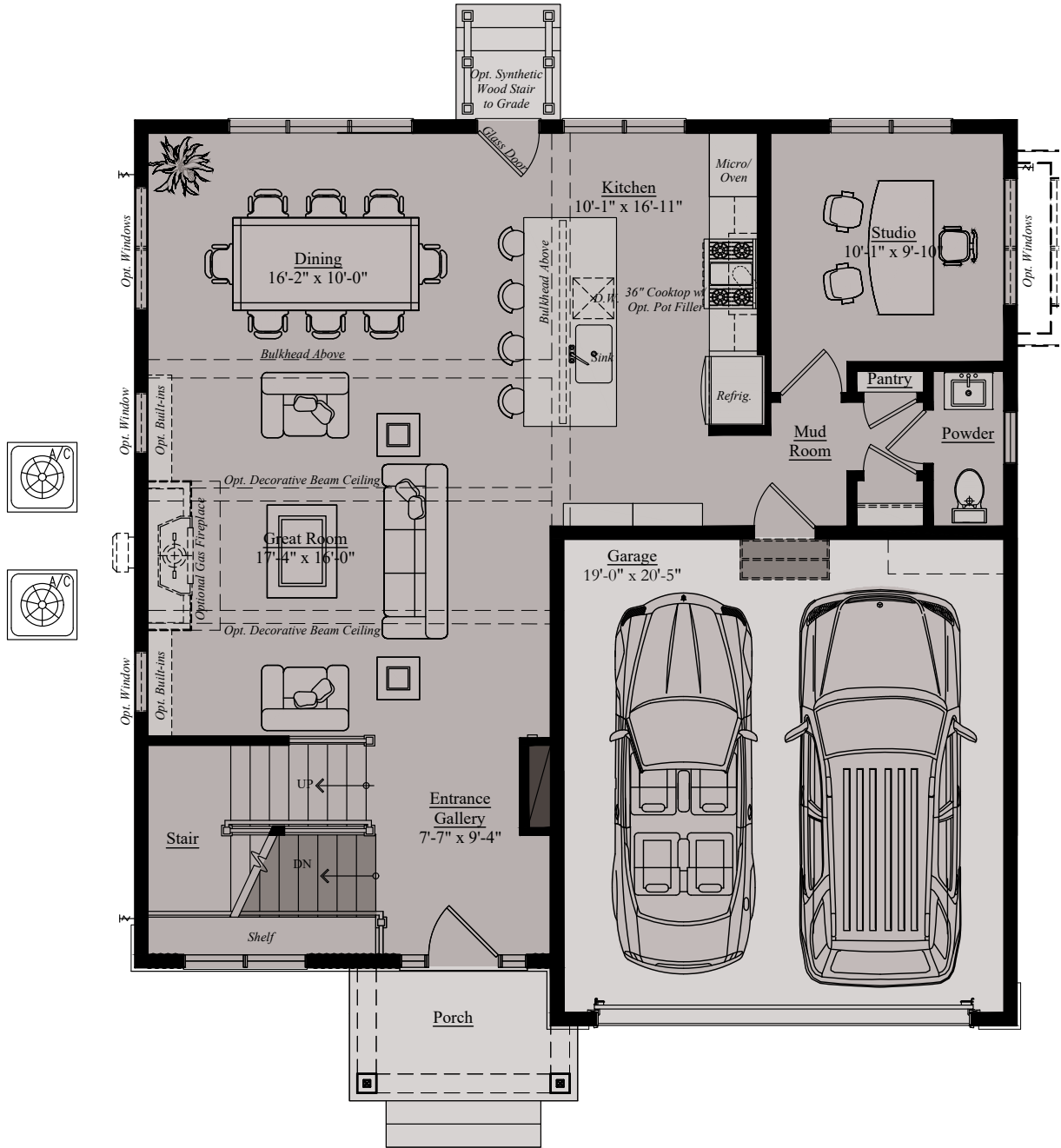
SALES MANAGER Lisa Stuart · 240.446.2803

W
WORMALD

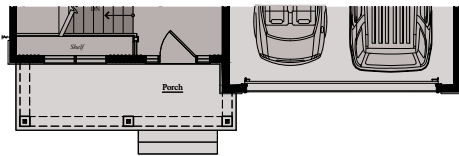
Brokers welcome. MHBR
No. 8652 and 8819. Prices
are rounded and subject
to change without notice.



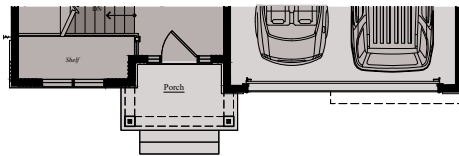
THE EMERSON | MAIN LEVEL



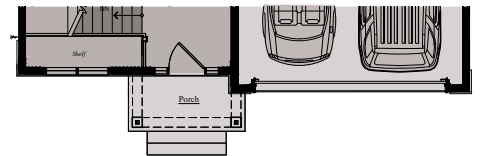
Main Level 'A'



Main Level 'B'



Main Level 'C'

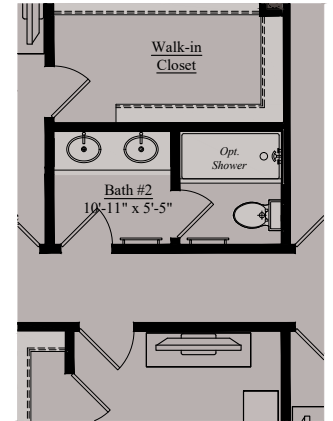
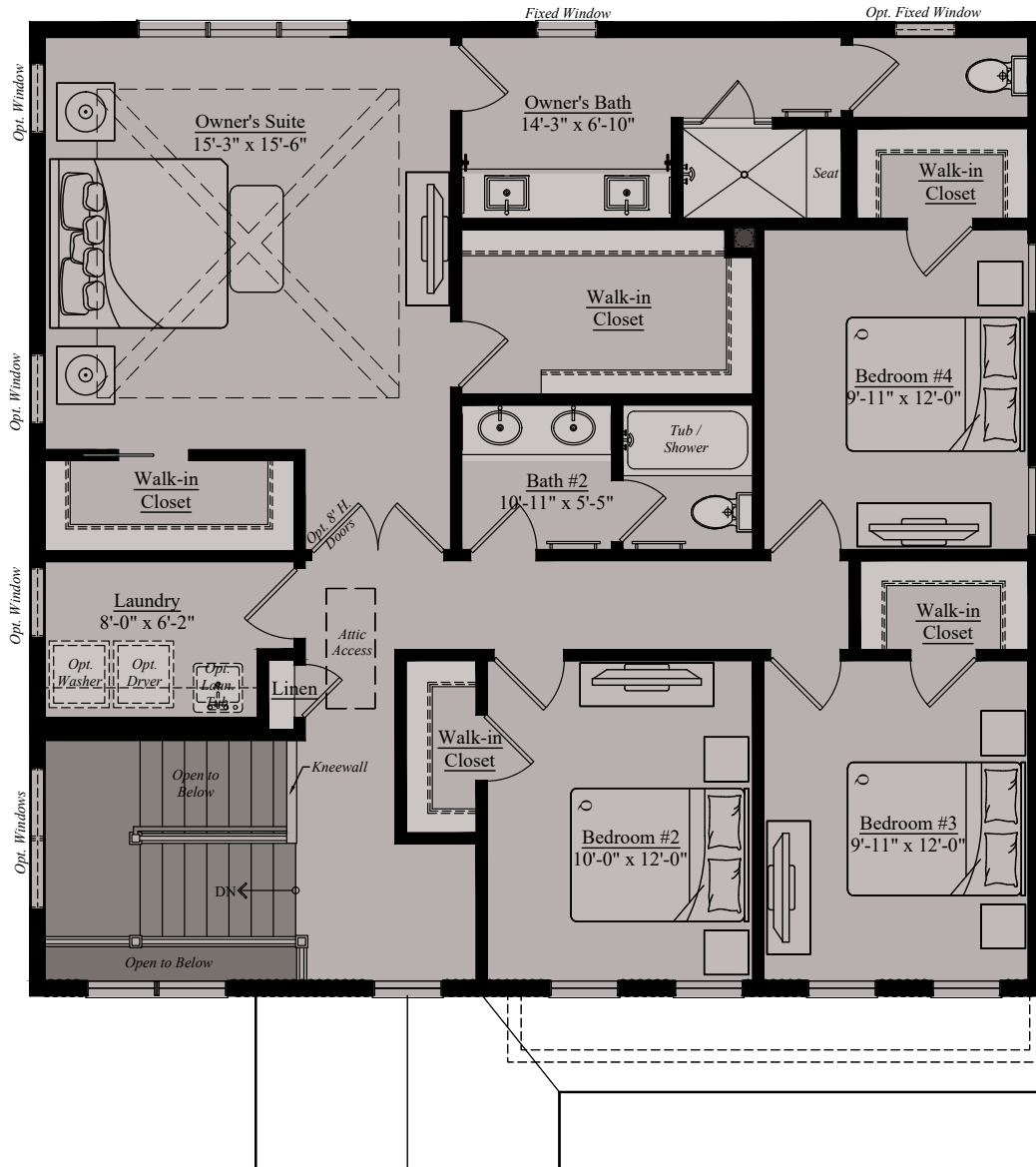


Main Level 'D'

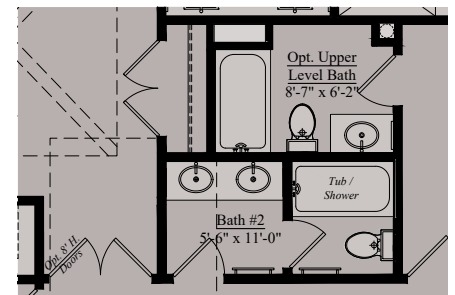
THE EMERSON

Architectural drawings are proprietary to Wormald Corporation. Unauthorized use or duplication of floor plans, concepts, or elevations is strictly prohibited. **Architectural designs are approximate artist's renderings and are for illustrative purposes only. Actual design and detail will vary from what is shown and are subject to change without notice.** Landscape and furniture is for illustrative purposes only. Optional areas are illustrated. Windows, door locations, and square footage may vary per elevation. Please consult Sales Manager for details. © 2024 Wormald Corporation.

THE EMERSON | UPPER LEVEL



Upper Level - Opt. Shower at Bath #2

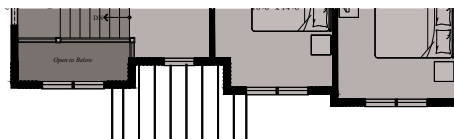


Opt. Upper Level Bath

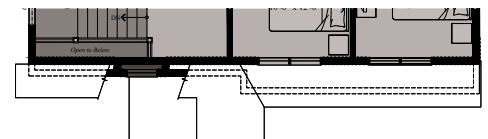
Upper Level 'A'



Upper Level 'B'



Upper Level 'C'

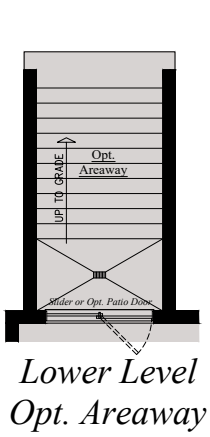


Upper Level 'D'

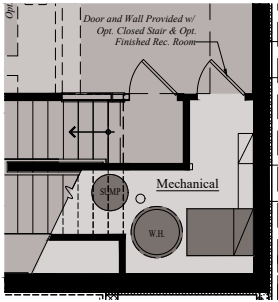
THE EMERSON

Architectural drawings are proprietary to Wormald Corporation. Unauthorized use or duplication of floor plans, concepts, or elevations is strictly prohibited. **Architectural designs are approximate artist's renderings and are for illustrative purposes only. Actual design and detail will vary from what is shown and are subject to change without notice.** Landscape and furniture is for illustrative purposes only. Optional areas are illustrated. Windows, door locations, and square footage may vary per elevation. Please consult Sales Manager for details. © 2024 Wormald Corporation.

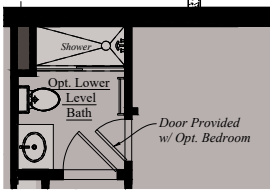
THE EMERSON | LOWER LEVEL W/ OPTIONS



Lower Level
Opt. Areaway



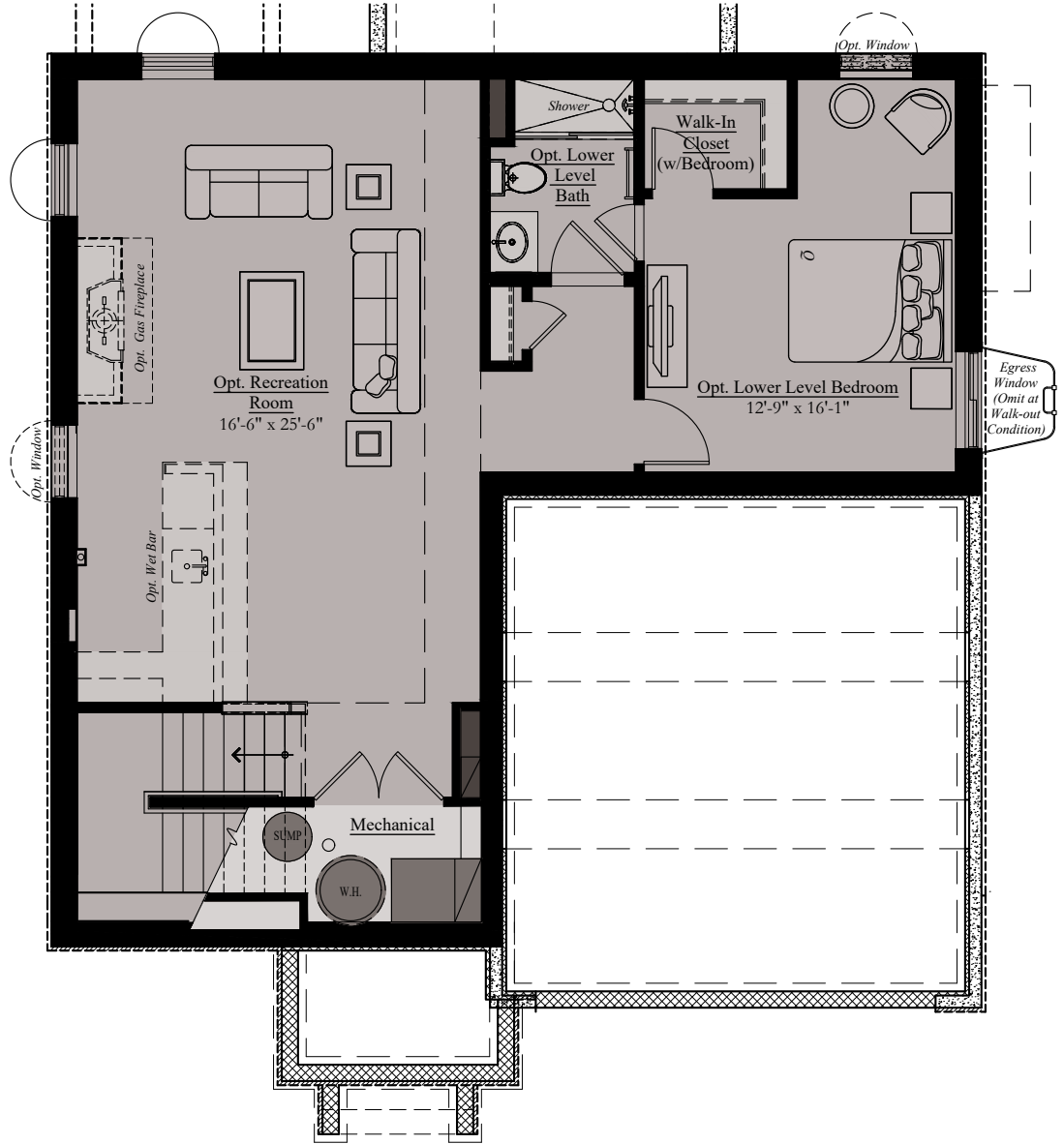
Lower Level Opt.
Closed Stair



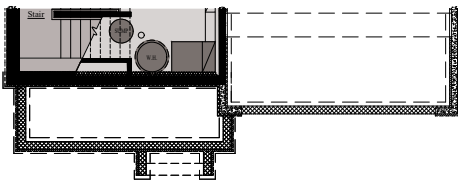
Opt. Lower
Level Bathroom



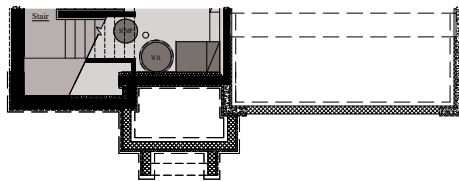
Walk-Out Condition



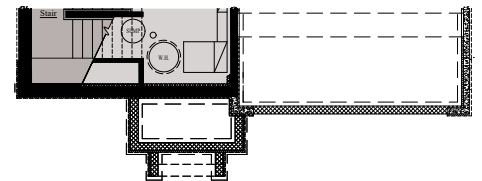
Finished Basement Plan



Lower Level 'B'



Lower Level 'C'

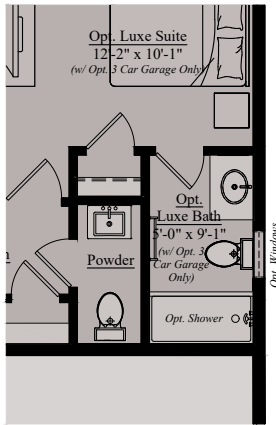


Lower Level 'D'

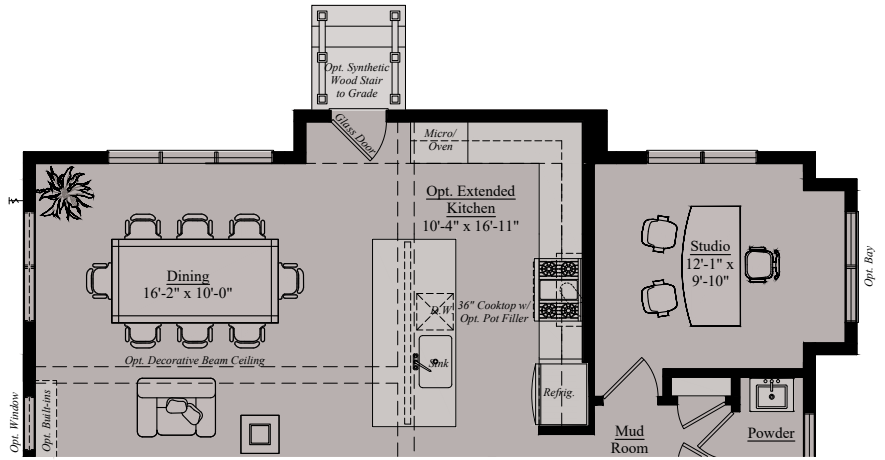
THE EMERSON

Architectural drawings are proprietary to Wormald Corporation. Unauthorized use or duplication of floor plans, concepts, or elevations is strictly prohibited. **Architectural designs are approximate artist's renderings and are for illustrative purposes only. Actual design and detail will vary from what is shown and are subject to change without notice.** Landscape and furniture is for illustrative purposes only. Optional areas are illustrated. Windows, door locations, and square footage may vary per elevation. Please consult Sales Manager for details. © 2024 Wormald Corporation.

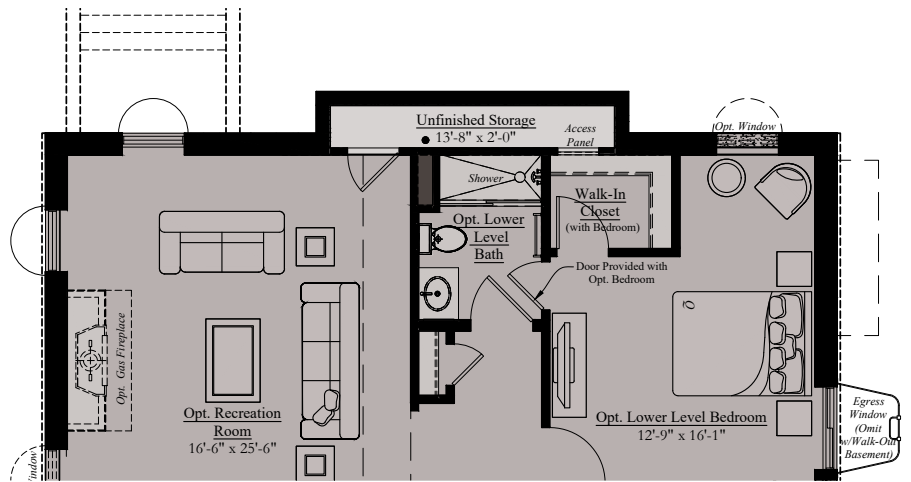
THE EMERSON | MAIN LEVEL OPTIONS



Main Level - Opt. Shower at Luxe Bath

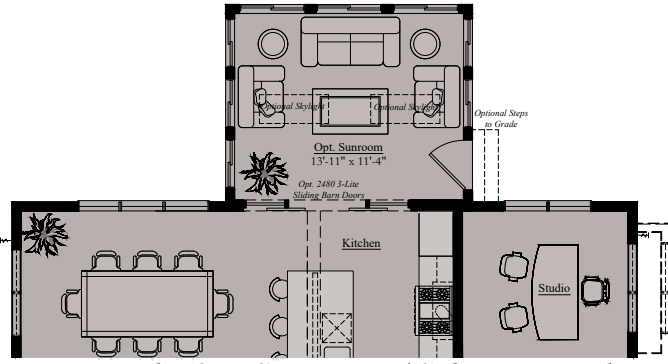


Main Level - Opt. Extended Kitchen & Opt. Box Bay

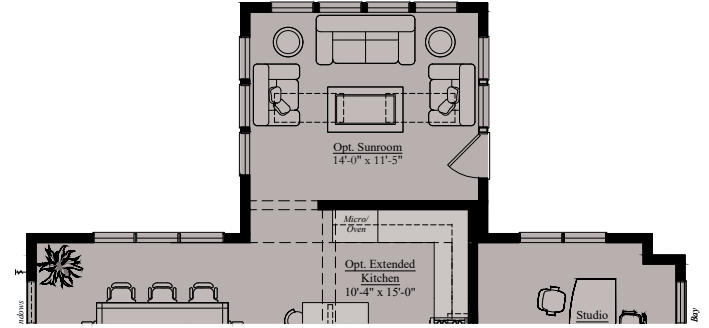


*Lower Level - Opt. Finished Basement w/
Opt. Extended Kitchen Above*

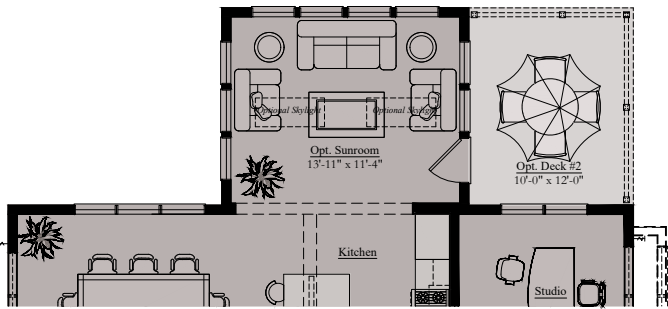
THE EMERSON | SUNROOM



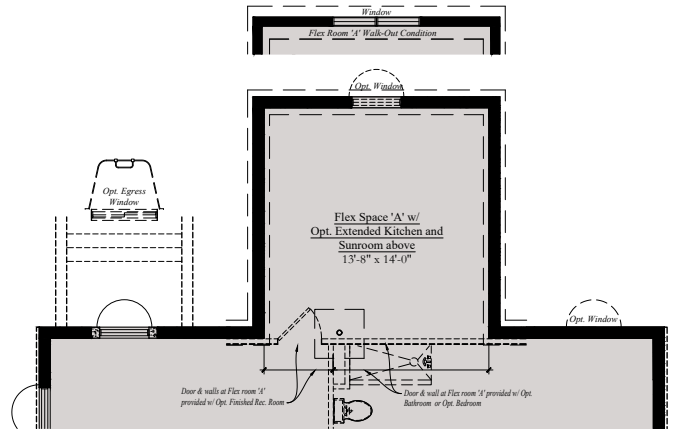
Main Level - Opt. Sunroom w/ Solarium Windows



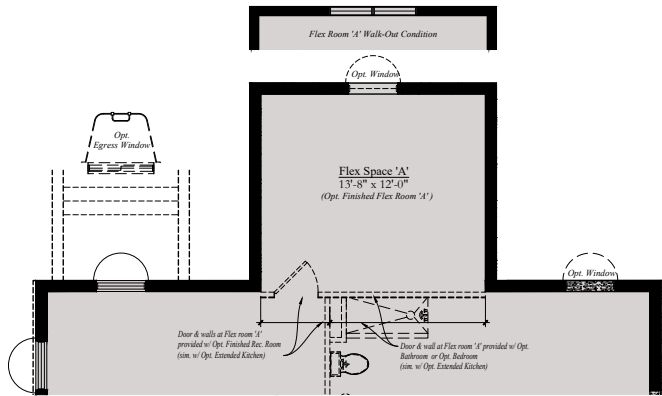
Main Level - Opt. Extended Kitchen w/ Opt. Sunroom



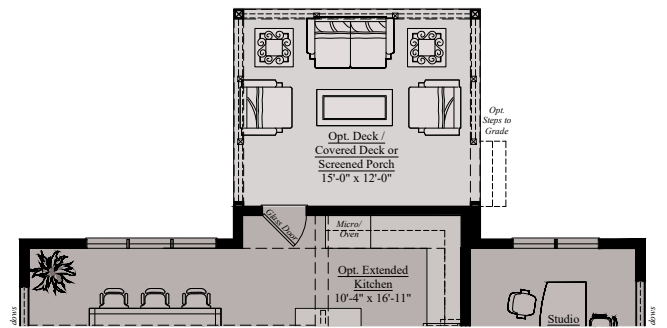
Main Level - Opt. Sunroom w/ Opt. Deck #2



Lower Level - Flex Space with Opt. Extended Kitchen and Opt. Sunroom Above



Lower Level - Flex Space 'A' w/ Opt. Sunroom Abv.

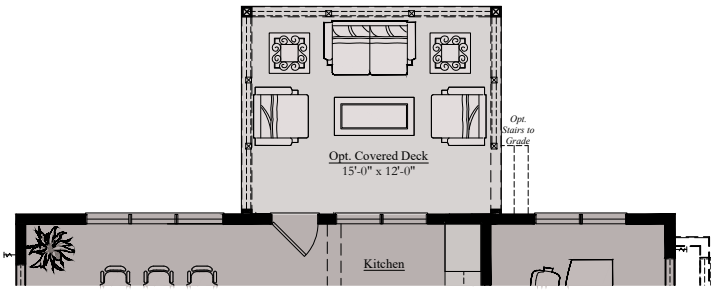


Main Level - Opt. Extended Kitchen w/ Opt. Deck, Covered Deck or Screened Porch

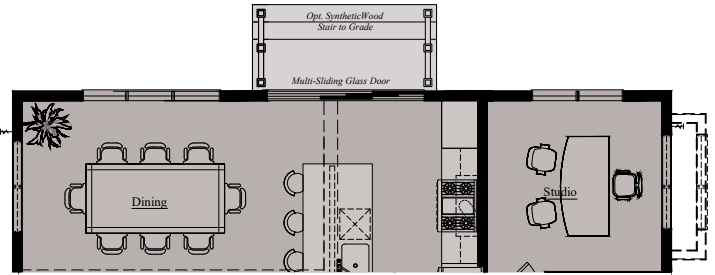
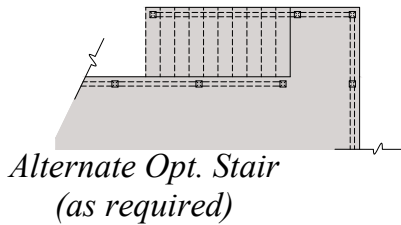
THE EMERSON

Architectural drawings are proprietary to Wormald Corporation. Unauthorized use or duplication of floor plans, concepts, or elevations is strictly prohibited. **Architectural designs are approximate artist's renderings and are for illustrative purposes only. Actual design and detail will vary from what is shown and are subject to change without notice.** Landscape and furniture is for illustrative purposes only. Optional areas are illustrated. Windows, door locations, and square footage may vary per elevation. Please consult Sales Manager for details. © 2024 Wormald Corporation.

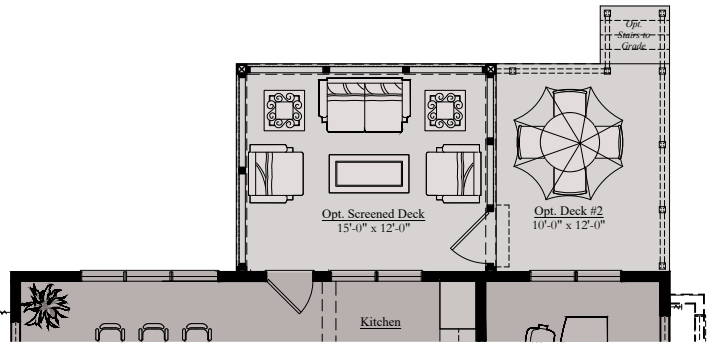
THE EMERSON | OUTDOOR LIVING



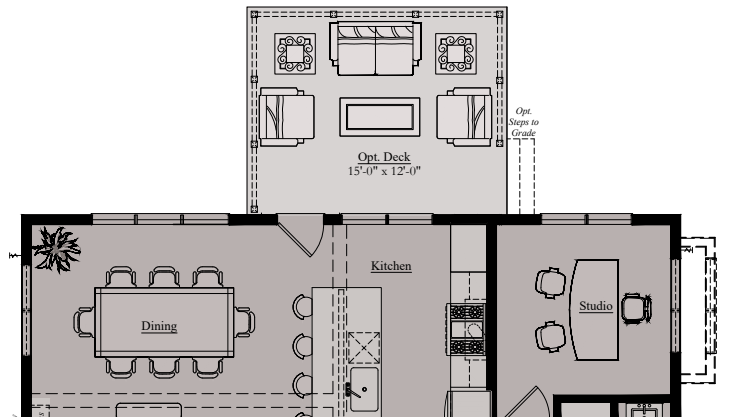
Main Level - Opt. Covered Deck



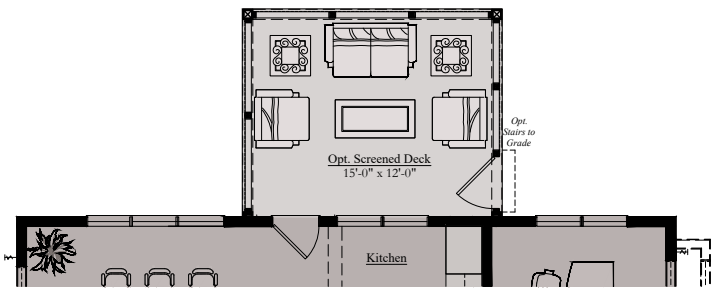
Main Level - Opt. Multi-Sliding Door



Main Level - Opt. Screened Deck & Opt. Deck 2



Main Level - Opt. Deck

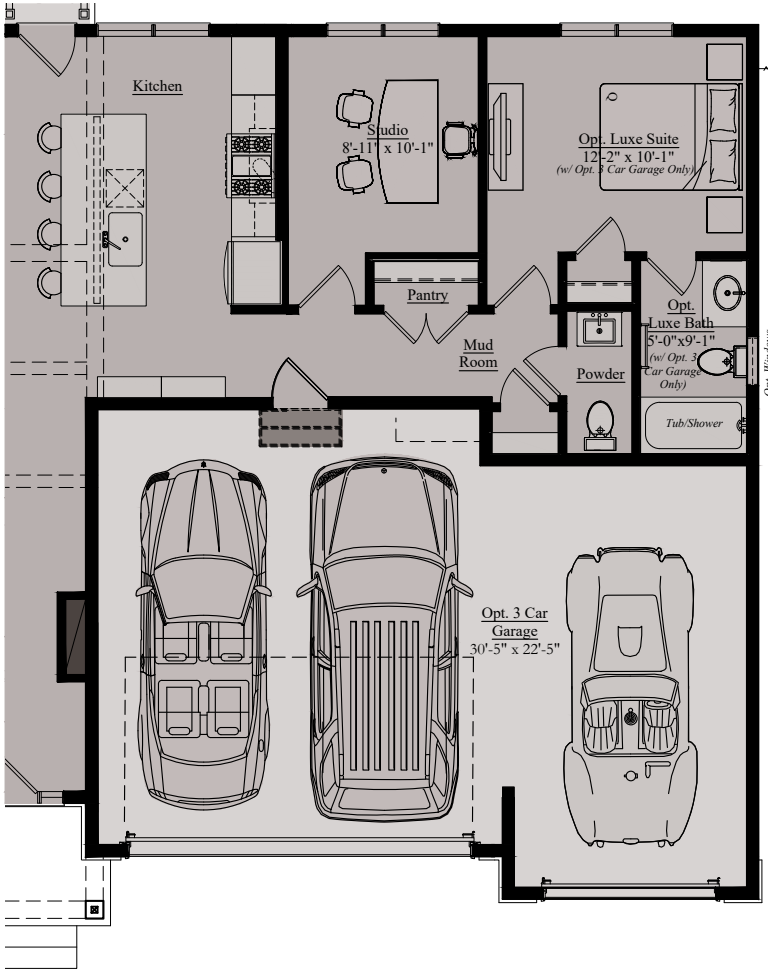


Main Level - Opt. Screened Deck

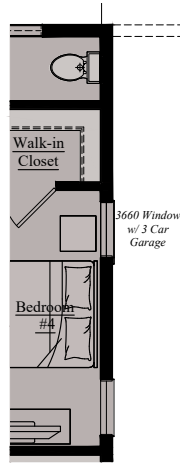
THE EMERSON

Architectural drawings are proprietary to Wormald Corporation. Unauthorized use or duplication of floor plans, concepts, or elevations is strictly prohibited. **Architectural designs are approximate artist's renderings and are for illustrative purposes only. Actual design and detail will vary from what is shown and are subject to change without notice.** Landscape and furniture is for illustrative purposes only. Optional areas are illustrated. Windows, door locations, and square footage may vary per elevation. Please consult Sales Manager for details. © 2024 Wormald Corporation.

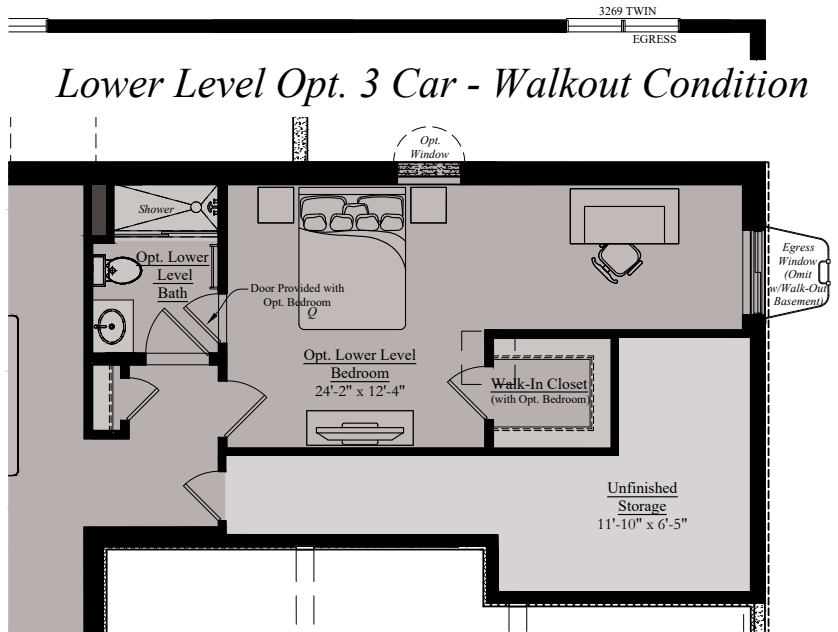
THE EMERSON | 3-CAR GARAGE



Main Level Opt. 3 - Car Garage w/ Luxe Suite



Partial Upper Level Plan - Bedroom #4 Window w/ 3 Car Garage



Lower Level Optional 3 Car Garage

THE EMERSON

Architectural drawings are proprietary to Wormald Corporation. Unauthorized use or duplication of floor plans, concepts, or elevations is strictly prohibited. **Architectural designs are approximate artist's renderings and are for illustrative purposes only. Actual design and detail will vary from what is shown and are subject to change without notice.** Landscape and furniture is for illustrative purposes only. Optional areas are illustrated. Windows, door locations, and square footage may vary per elevation. Please consult Sales Manager for details. © 2024 Wormald Corporation.

NOTES:

NOTES:

NOTES:

LOVE
WHERE
YOU
LIVE

W
W O R M A L D

www.wormald.com