

THE DARTMOUTH



Elevation B



Elevation A



Elevation C

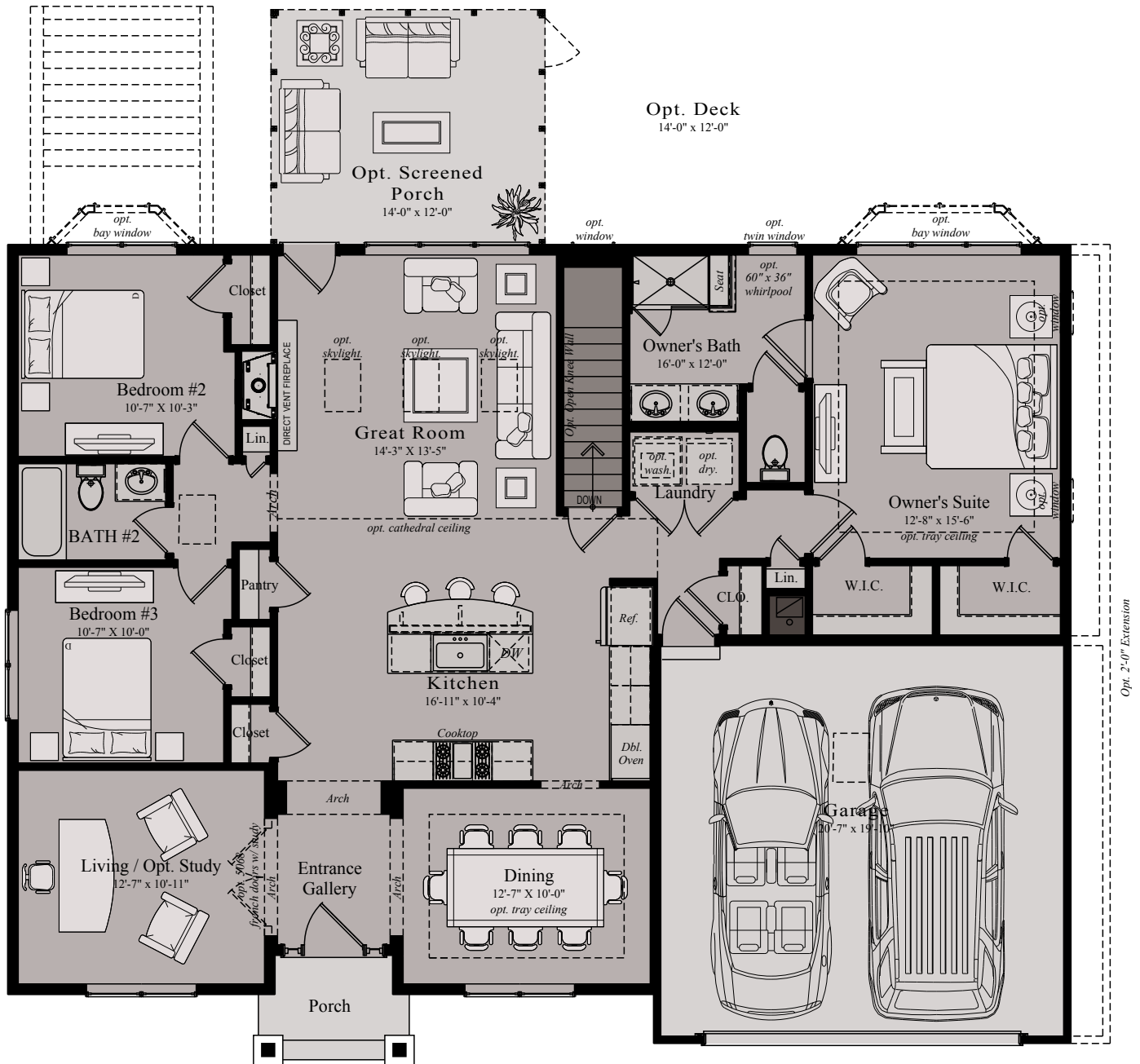
BRENTWOOD SPRINGS The Mount Vernon Collection

Charlie McAuliffe, Sales Manager
540.751.9103 | Charlie.McAuliffe@wormald.com
17289 Creekside Green Place, Purcellville / Round Hill VA 20141
Open Daily 11 a.m. - 5 p.m.
or by appointment

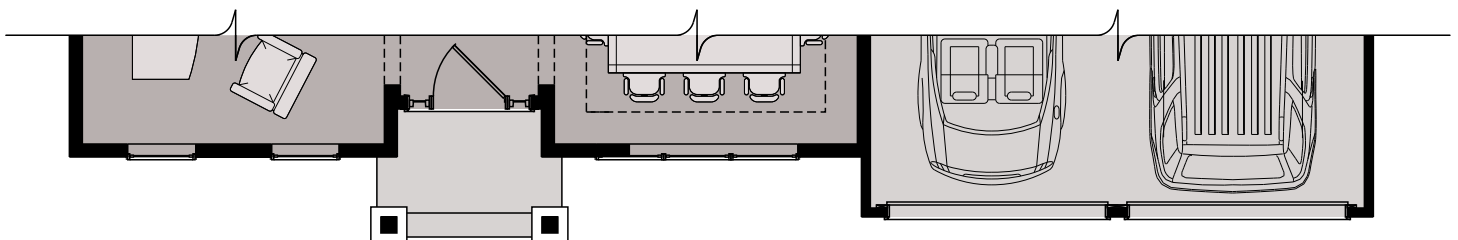
W
WORMALD

Brokers welcome. Prices
are rounded and subject to
change without notice.





MAIN LEVEL - ELEVATION B



MAIN LEVEL - ELEVATION A PART. PLAN

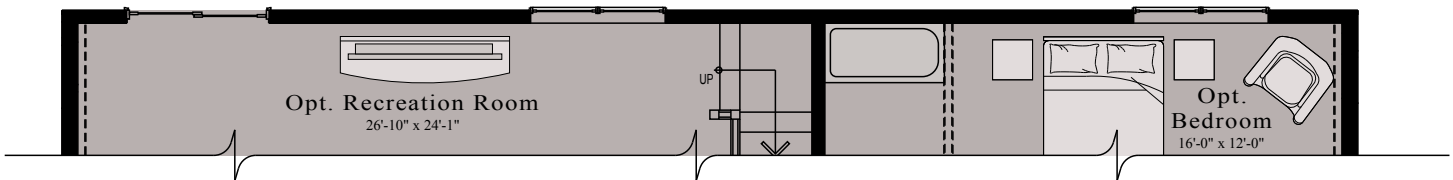
WORMALD CORPORATION - ALL RIGHTS RESERVED

All ideas, designs, arrangements and plans indicated or represented by this drawing and written material appearing herein constitute the original and unpublished work of the Wormald corporation and may not be duplicated, used or disclosed to any person, firm or corporation for any purpose whatsoever without the written consent of the wormald corporation. Actual product and specifications may vary in dimension or detail from these drawings and are subject to change without notice. Window and door locations vary per elevation. MHBR No. 3514

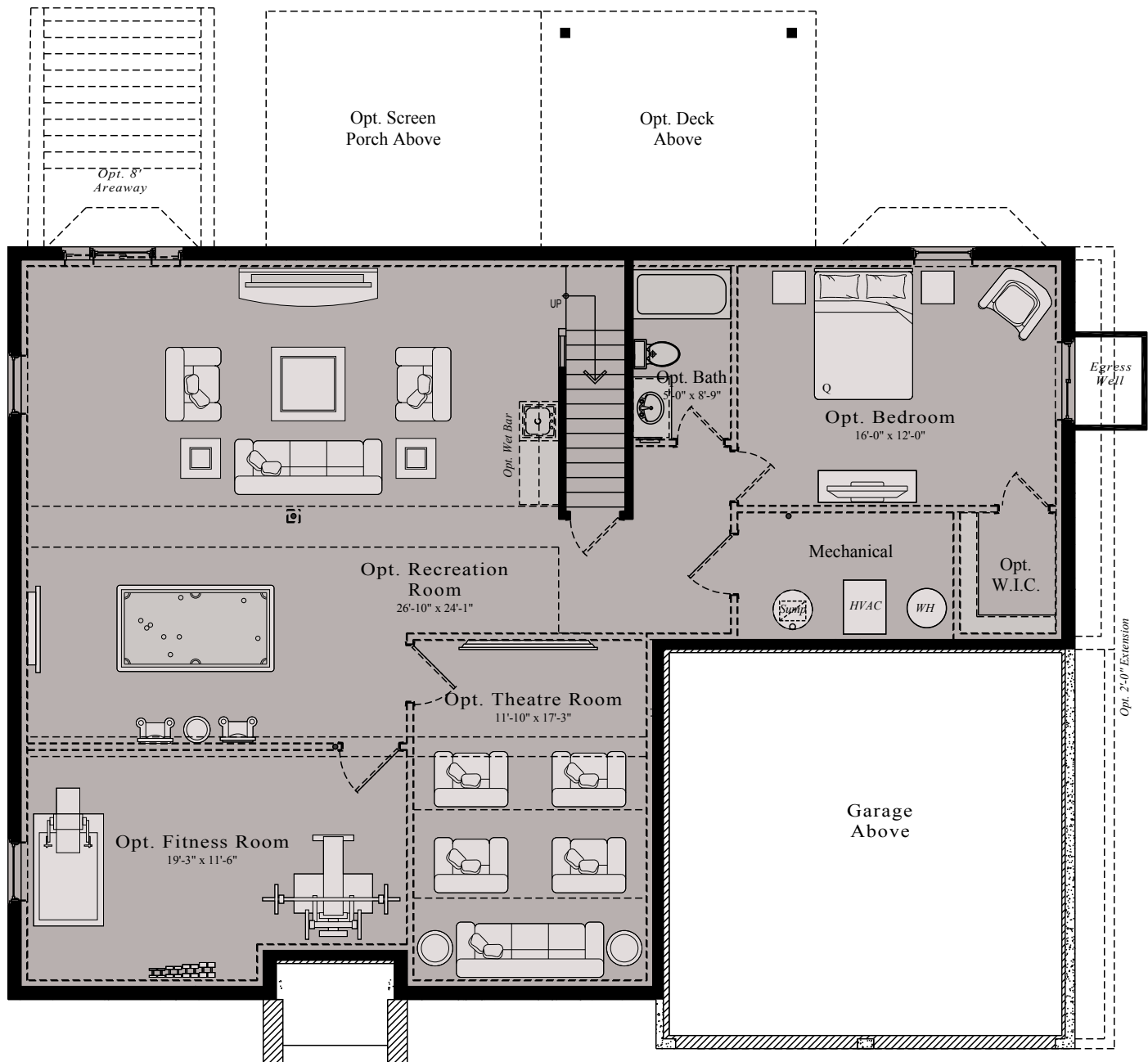


10/11/2018

W
WORMALD



LOWER LEVEL - PART. OPT. FINISHED PLAN
WALK-OUT CONDITION



LOWER LEVEL - OPT. FINISHED PLAN IN-GROUND
CONDITION

WORMALD CORPORATION - ALL RIGHTS RESERVED

All ideas, designs, arrangements and plans indicated or represented by this drawing and written material appearing herein constitute the original and unpublished work of the Wormald corporation and may not be duplicated, used or disclosed to any person, firm or corporation for any purpose whatsoever without the written consent of the wormald corporation. Actual product and specifications may vary in dimension or detail from these drawings and are subject to change without notice. Window and door locations vary per elevation. MHBR No. 3514



10/11/2018

W
WORMALD

LOVE
WHERE
YOU
LIVE

W
W O R M A L D
www.wormald.com