

# THE DALTON



Elevation D



Elevation C



Elevation B



Elevation A

Glass doors are optional

## BEALLAIR

The Modern Farmhouse Collection

Caryn Knapp, Sales Manager

304.728.6300 | Caryn.Knapp@wormald.com

73 Claymont Hill Street, Charles Town, WV 25414

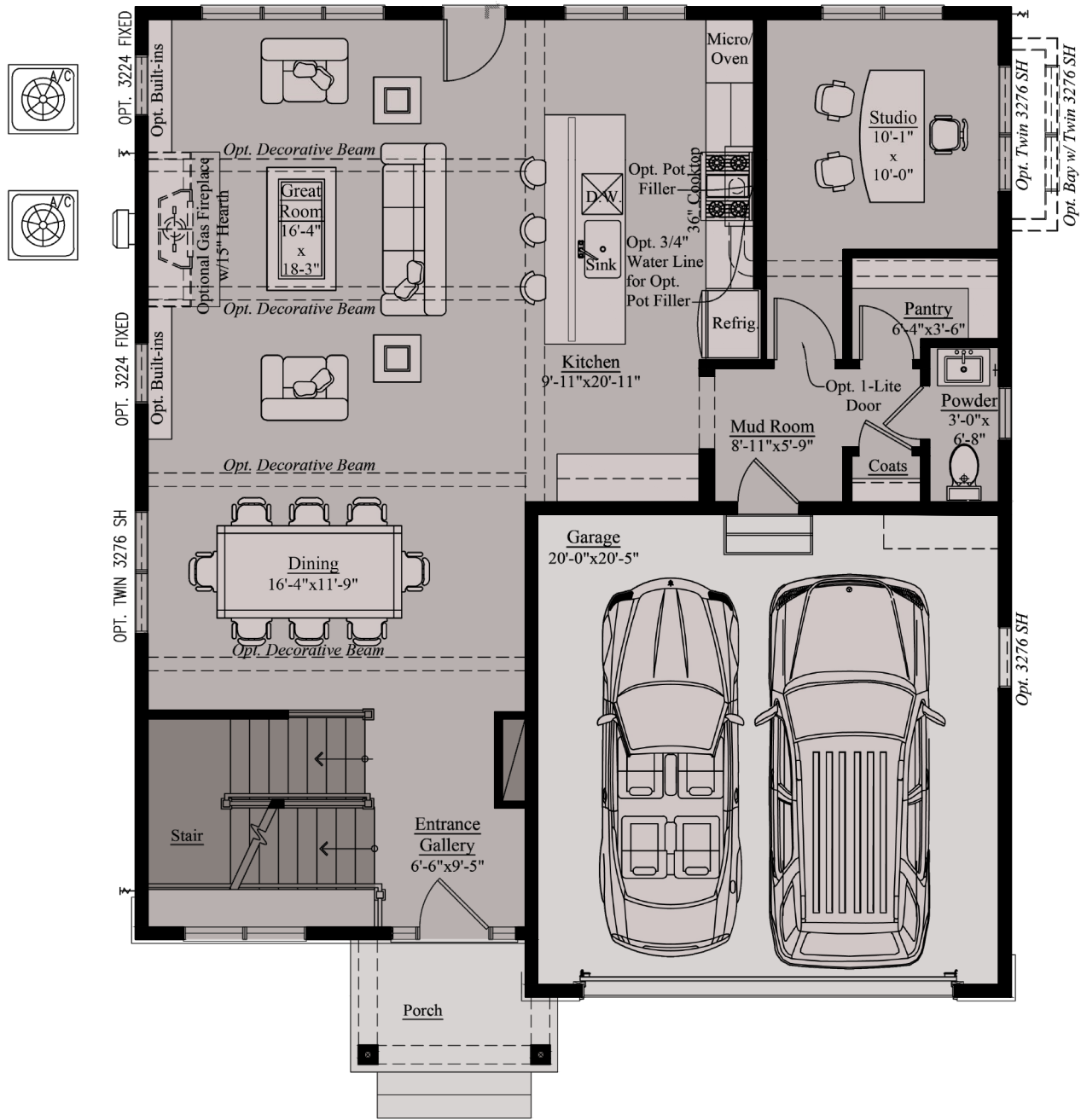
Open daily 11 a.m. - 5 p.m. or by appointment

W  
WORMALD

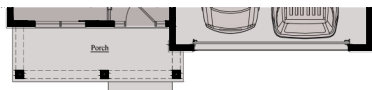
Sales by Wormald Realty West  
Virginia, LLC. Agents for seller,  
Richard W. Bryan, Broker.  
WVB210300748. 703.967.2073.  
Prices are rounded and subject  
to change without notice.



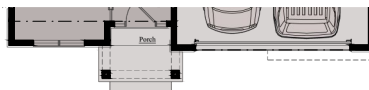
# THE DALTON | MAIN LEVEL



*Main Level 'A'*



*Main Level 'B'*



*Main Level 'C'*



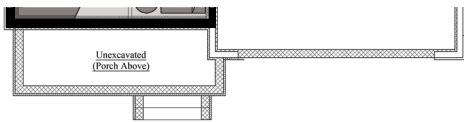
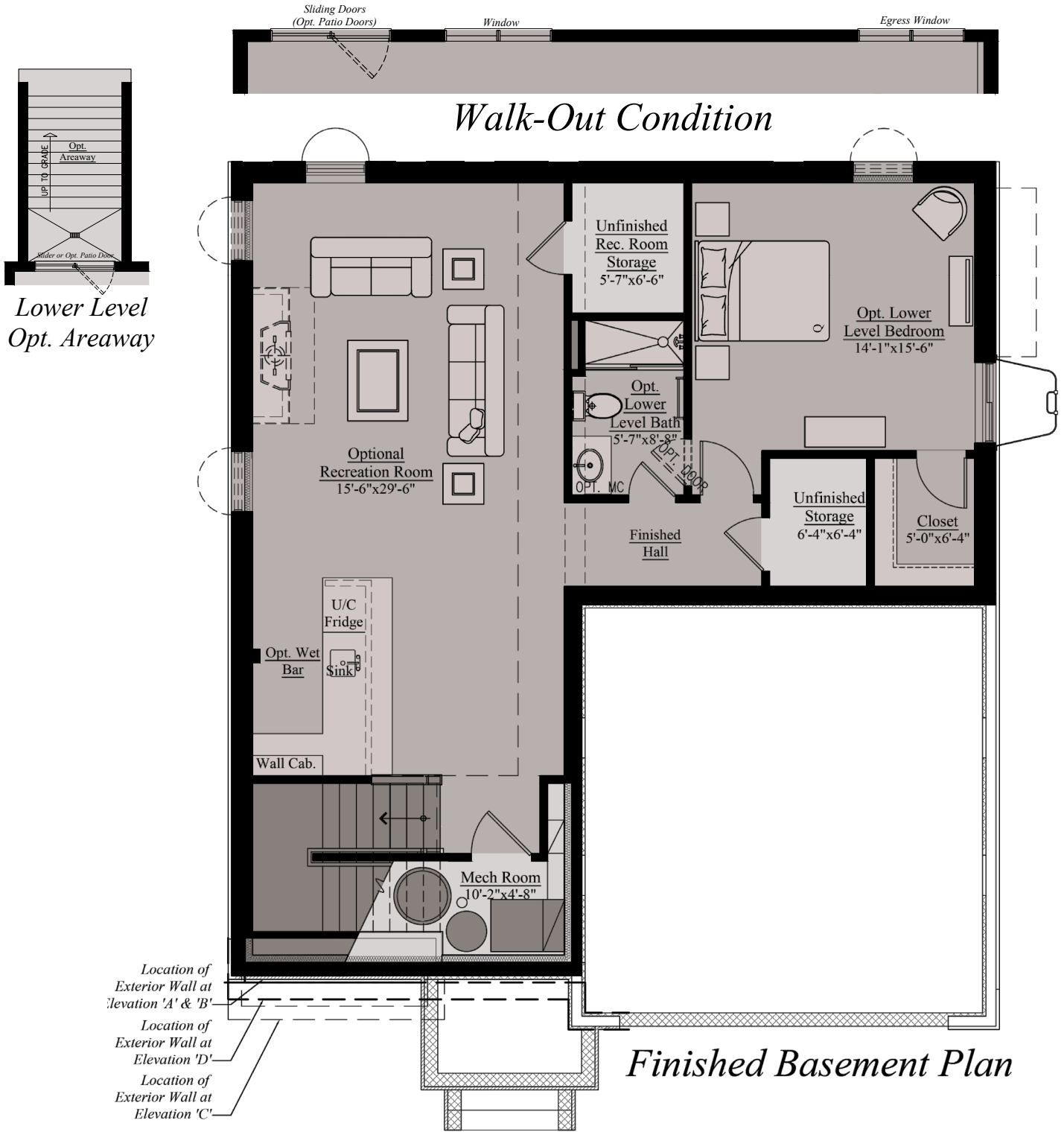
*Main Level 'D'*

**THE DALTON**

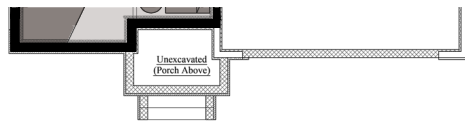
Architectural drawings are proprietary to Wormald Corporation. Unauthorized use or duplication of floor plans, concepts, or elevations is strictly prohibited. **Architectural designs are approximate artist's renderings and are for illustrative purposes only. Actual design and detail will vary from what is shown and are subject to change without notice.** Landscape and furniture is for illustrative purposes only. Optional areas are illustrated. Windows, door locations, and square footage may vary per elevation. Please consult Sales Manager for details. © 2026 Wormald Corporation.



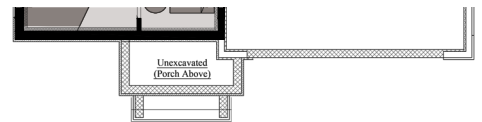
# THE DALTON | LOWER LEVEL



Lower Level 'B'



Lower Level 'C'

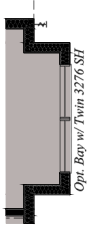


Lower Level 'D'

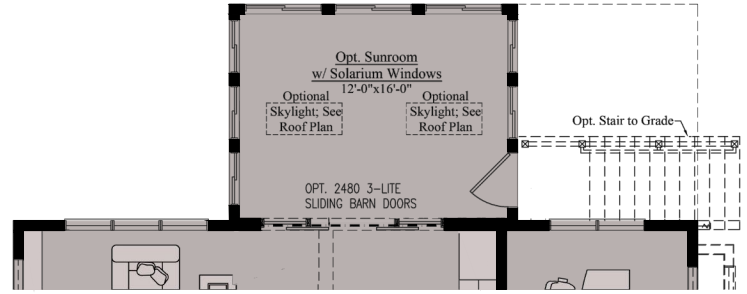
## THE DALTON

Architectural drawings are proprietary to Wormald Corporation. Unauthorized use or duplication of floor plans, concepts, or elevations is strictly prohibited. **Architectural designs are approximate artist's renderings and are for illustrative purposes only. Actual design and detail will vary from what is shown and are subject to change without notice.** Landscape and furniture is for illustrative purposes only. Optional areas are illustrated. Windows, door locations, and square footage may vary per elevation. Please consult Sales Manager for details. © 2026 Wormald Corporation.

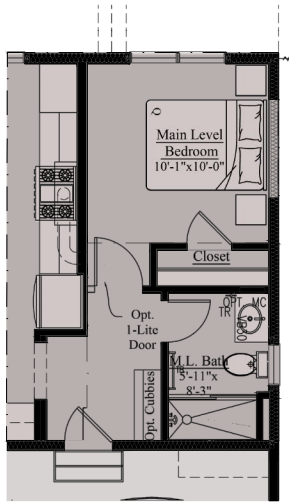
# THE DALTON | MAIN LEVEL & SUNROOM OPTIONS



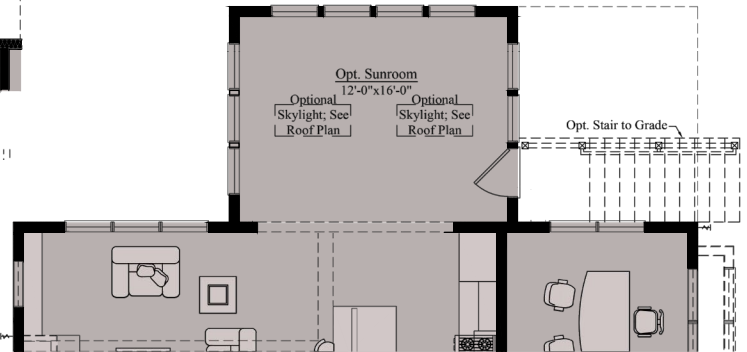
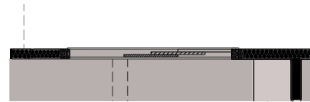
Opt. Bay Window



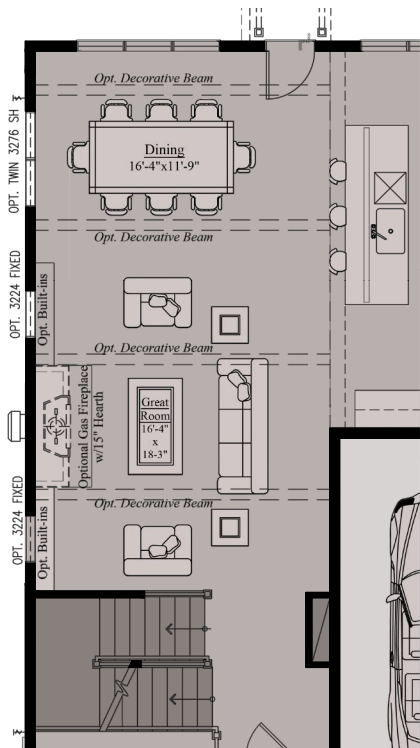
Main Level - Opt. Sunroom + Solarium Windows + Opt. Stair To Grade



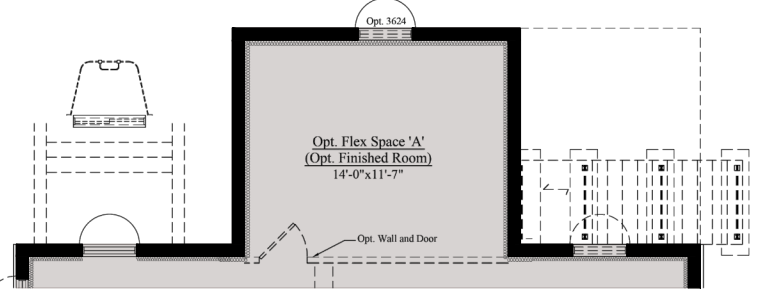
Opt. Main Level Bedroom



Main Level - Opt. Sunroom + Opt. Stair To Grade

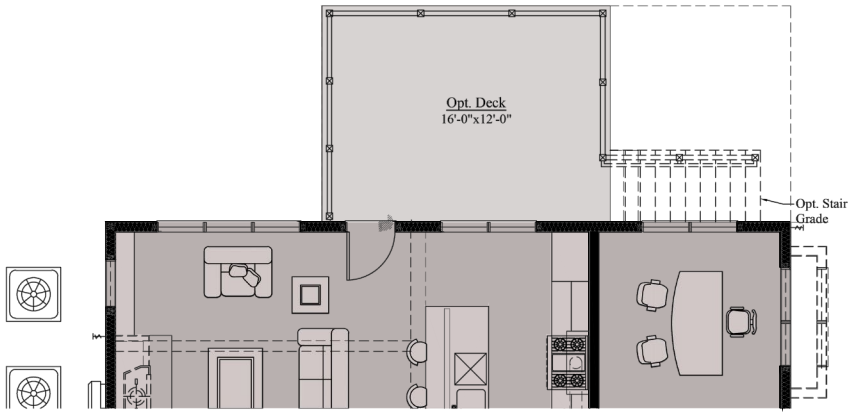


Opt. Alternate Dining/Living Room

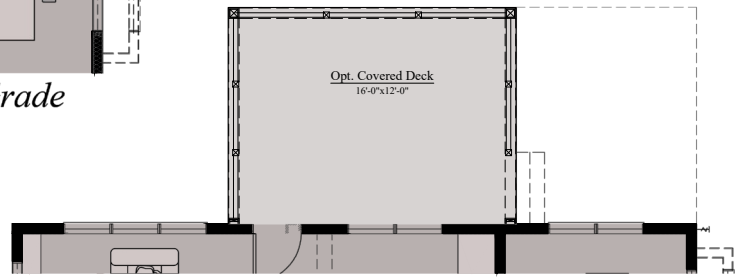


Lower Level - Flex Room 'A' + Opt. Sunroom Abv. + Opt. Stair To Grade

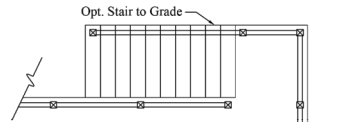
# THE DALTON | OUTDOOR LIVING OPTIONS



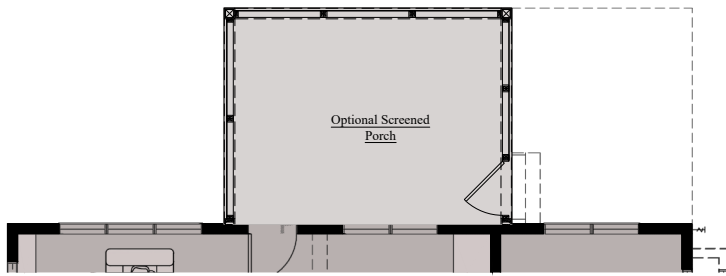
*Main Level - Opt. Deck + Opt. Steps to Grade*



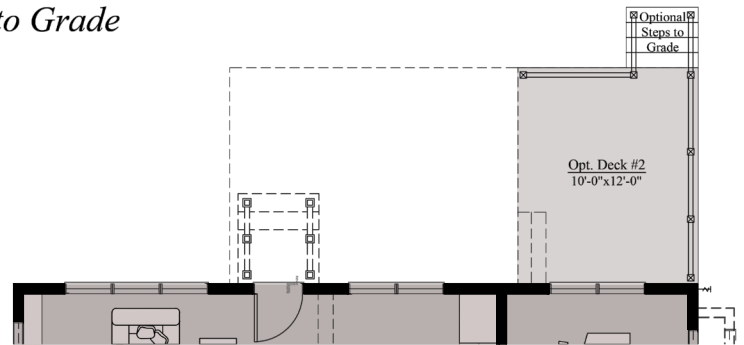
*Main Level - Opt. Covered Deck + Opt. Steps to Grade*



*Alternate Opt. Stair  
(as required)*



*Main Level - Opt. Screened Porch + Opt. Stair to Grade*

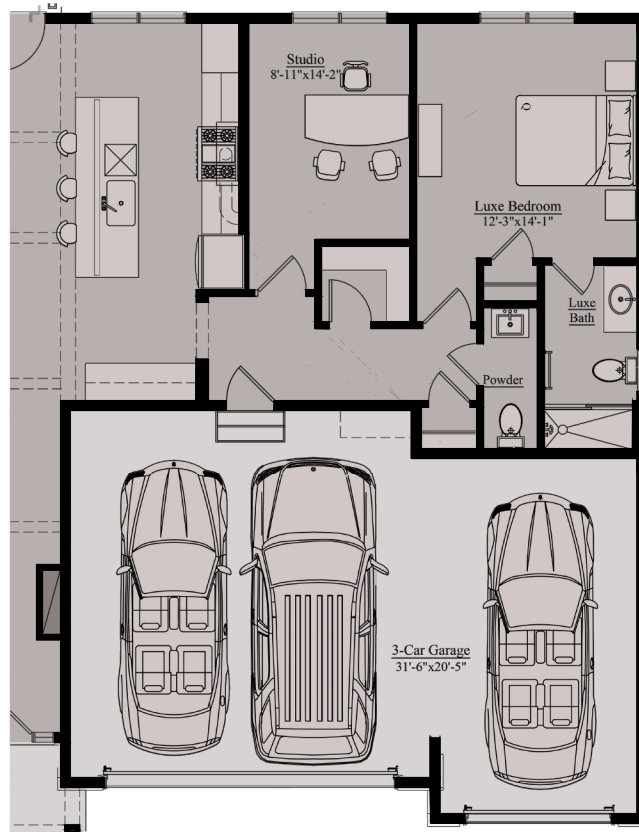


*Main Level - Opt. Deck 2 + Stair*

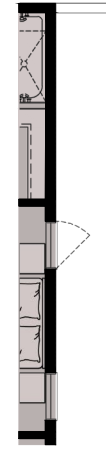
## THE DALTON

Architectural drawings are proprietary to Wormald Corporation. Unauthorized use or duplication of floor plans, concepts, or elevations is strictly prohibited. **Architectural designs are approximate artist's renderings and are for illustrative purposes only. Actual design and detail will vary from what is shown and are subject to change without notice.** Landscape and furniture is for illustrative purposes only. Optional areas are illustrated. Windows, door locations, and square footage may vary per elevation. Please consult Sales Manager for details. © 2026 Wormald Corporation.

# THE DALTON | 3-CAR GARAGE OPTIONS



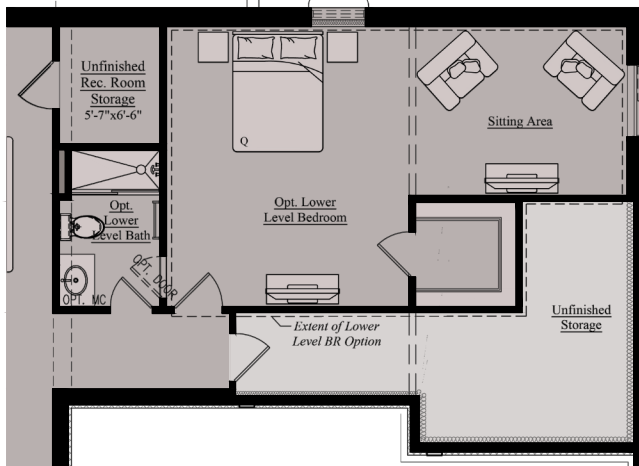
*Main Level Opt. 3 - Car Garage w/ Luxe Suite*



*Partial Upper Level Plan - Bedroom #4 Window w/ 3 Car Garage*



*Lower Level Opt. 3 Car - Walkout Condition*



*Opt. Egress window & Well. Requ'd w/LL Bedroom*

## THE DALTON

Architectural drawings are proprietary to Wormald Corporation. Unauthorized use or duplication of floor plans, concepts, or elevations is strictly prohibited. **Architectural designs are approximate artist's renderings and are for illustrative purposes only. Actual design and detail will vary from what is shown and are subject to change without notice.** Landscape and furniture is for illustrative purposes only. Optional areas are illustrated. Windows, door locations, and square footage may vary per elevation. Please consult Sales Manager for details. © 2026 Wormald Corporation.

**LOVE**  
WHERE  
**YOU**  
LIVE

**W**  
W O R M A L D

[www.wormald.com](http://www.wormald.com)