

THE CITY HOME

WITH THE GEORGETOWN PACKAGE

4,882 SQ. FT. LIVING SPACE | 879 SQ. FT. OUTDOOR LIVING SPACE



The Georgetown Model at Crown

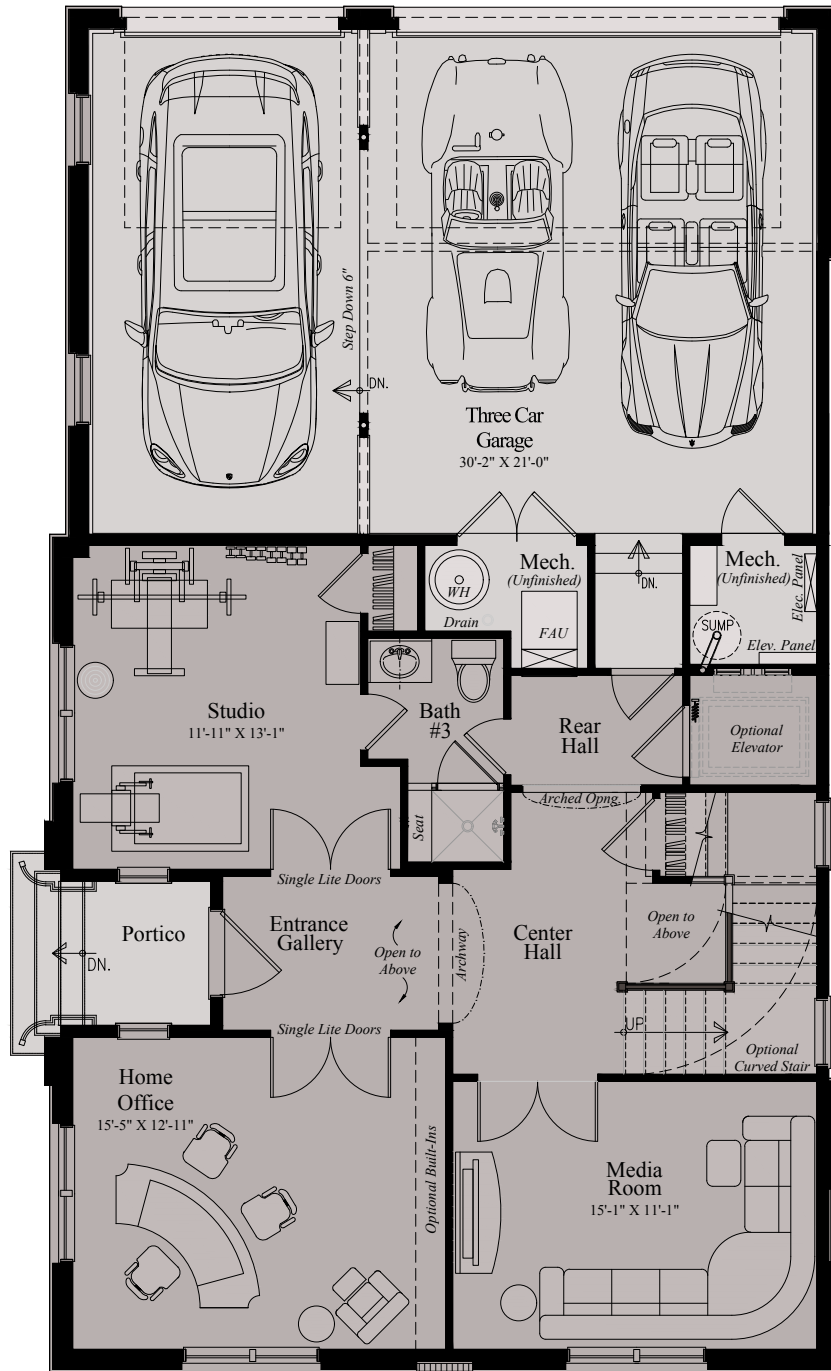
CROWN The City Home Collection

Candice Grams, Sales Manager
540.809.6550 | crown@wormald.com
803 Crown Park Ave, Gaithersburg, MD 20878
Open Daily 11 a.m. - 5 p.m.
or by appointment

W
WORMALD

Brokers welcome. MHBR
No. 7342. Prices are
rounded and subject to
change without notice.

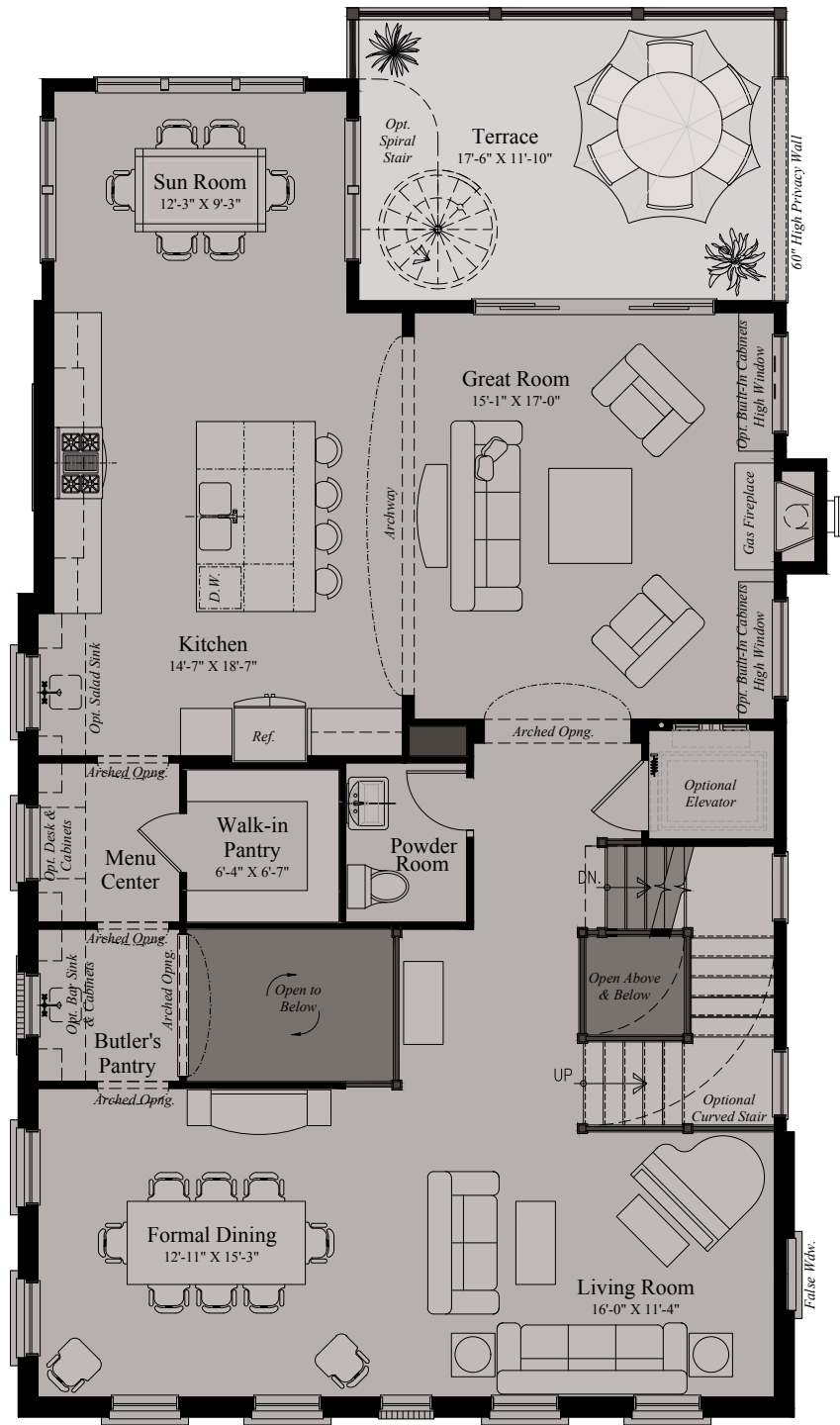




THE CITY HOME WITH GEORGETOWN PACKAGE - ENTRY LEVEL

Design and details are the exclusive property of Wormald Homes, Inc. Unauthorized use is strictly prohibited. Actual product and specifications may vary in dimension or detail from these drawings and are subject to change without notice. Window and door locations vary per elevation. MHBR No. 3514

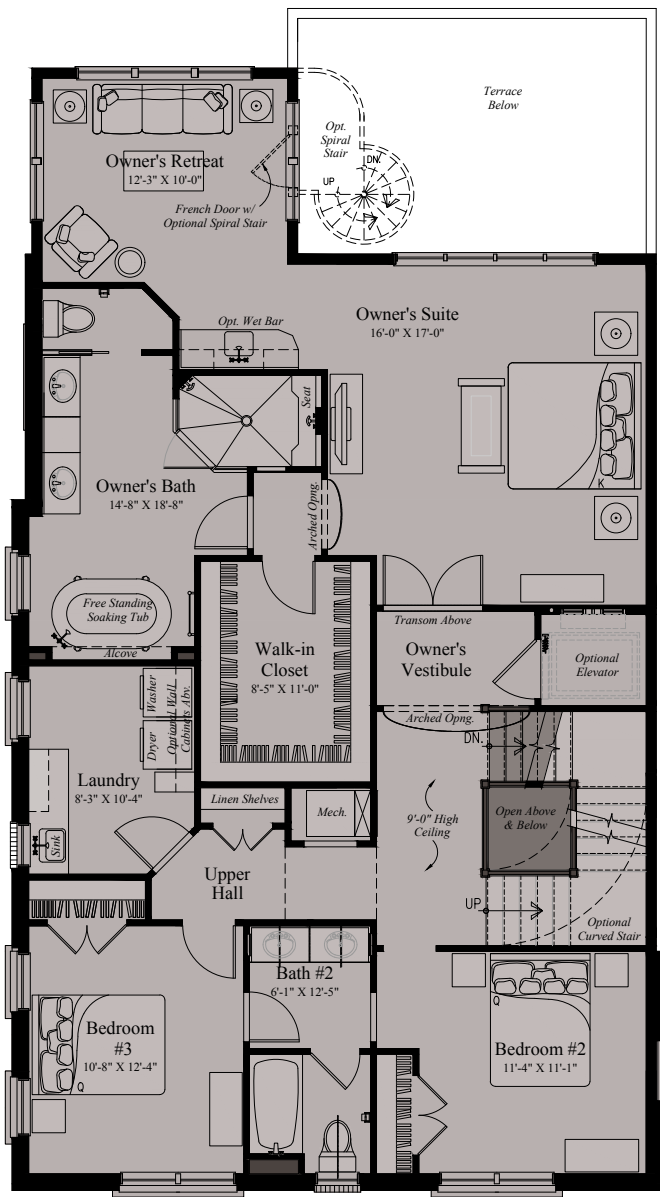
W
W O R M A L D



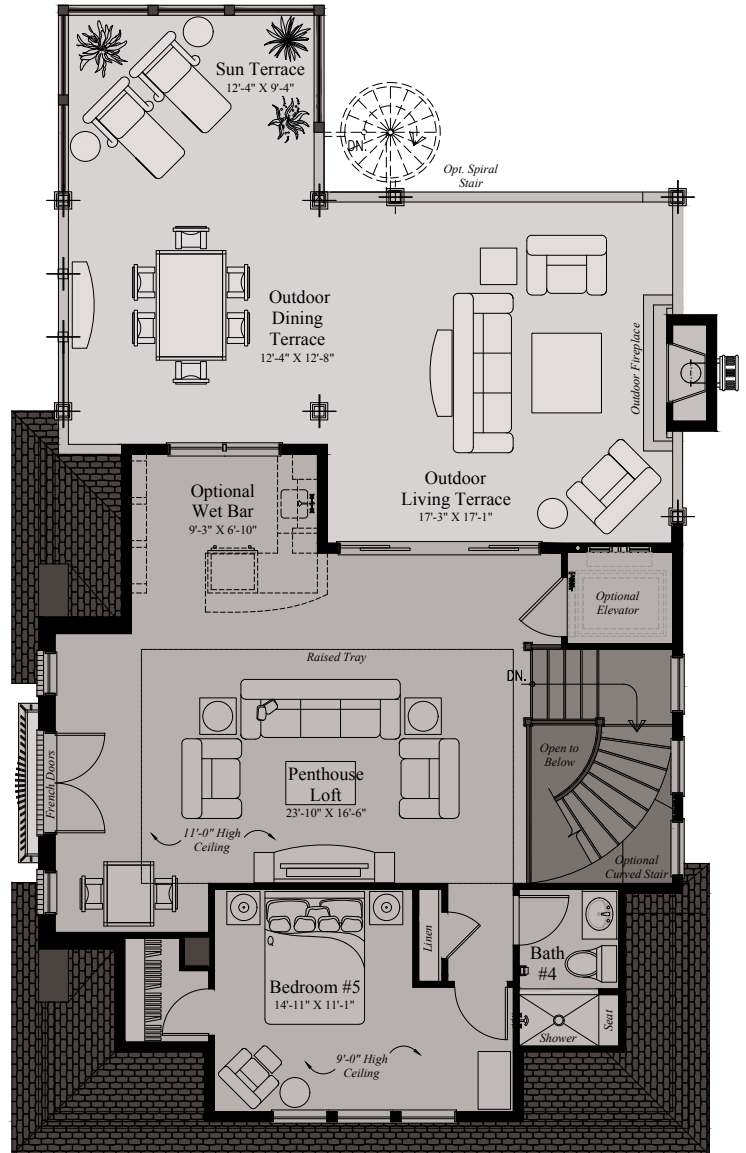
THE CITY HOME WITH GEORGETOWN PACKAGE - MAIN LEVEL

Design and details are the exclusive property of Wormald Homes, Inc. Unauthorized use is strictly prohibited. Actual product and specifications may vary in dimension or detail from these drawings and are subject to change without notice. Window and door locations vary per elevation. MHBR No. 3514

W
WORMALD



UPPER LEVEL



PENTHOUSE LEVEL