

# THE CITY HOME

WITH THE CAMBRIDGE PACKAGE

4,948 SQ. FT. LIVING SPACE | 879 SQ. FT. OUTDOOR LIVING SPACE



Illustrative rendering of the City Homes at Crown

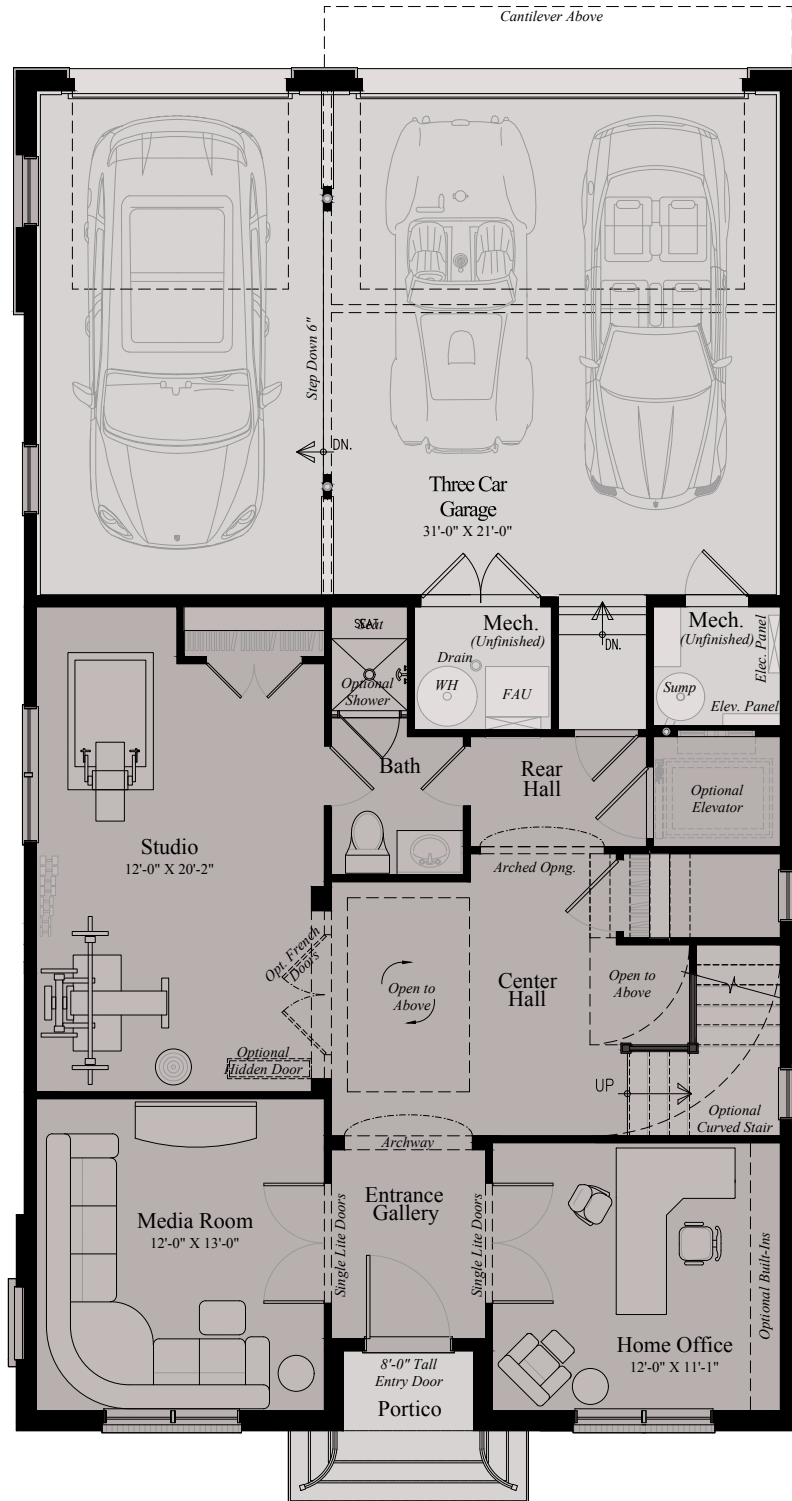
## **CROWN** The City Home Collection

Candice Grams, Sales Manager  
540.809.6550 | crown@wormald.com  
803 Crown Park Ave, Gaithersburg, MD 20878  
Open Daily 11 a.m. - 5 p.m.  
or by appointment

**W**  
WORMALD

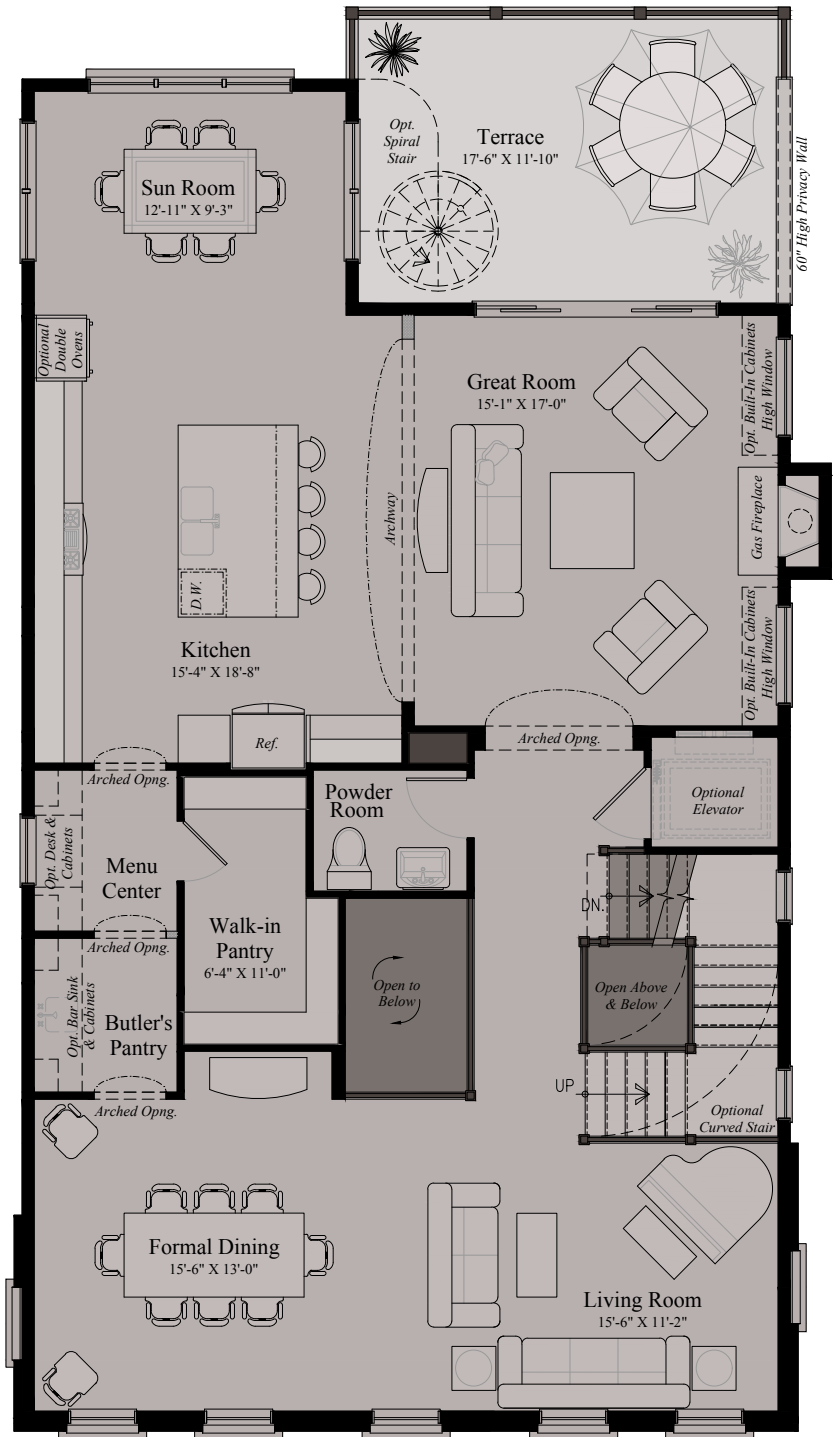
Brokers welcome. MHBR  
No. 7342. Prices are  
rounded and subject to  
change without notice.





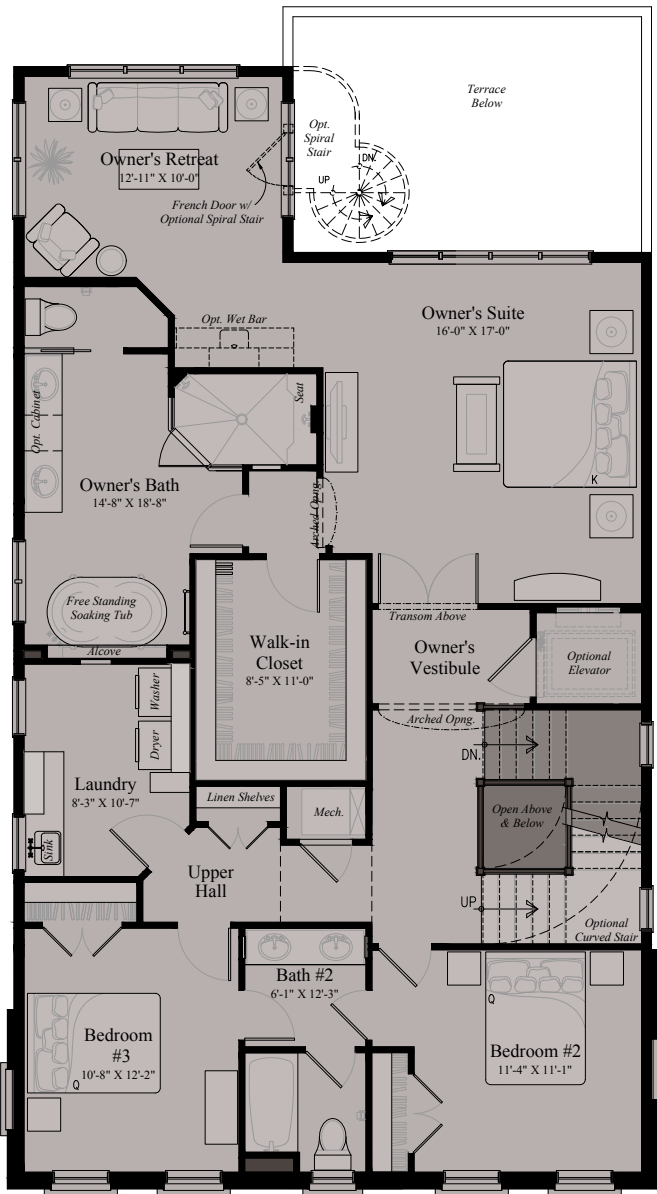
## THE CITY HOME WITH CAMBRIDGE PACKAGE - ENTRY LEVEL

Design and details are the exclusive property of Wormald Homes, Inc. Unauthorized use is strictly prohibited. Actual product and specifications may vary in dimension or detail from these drawings and are subject to change without notice. Window and door locations vary per elevation. MHBR No. 3514

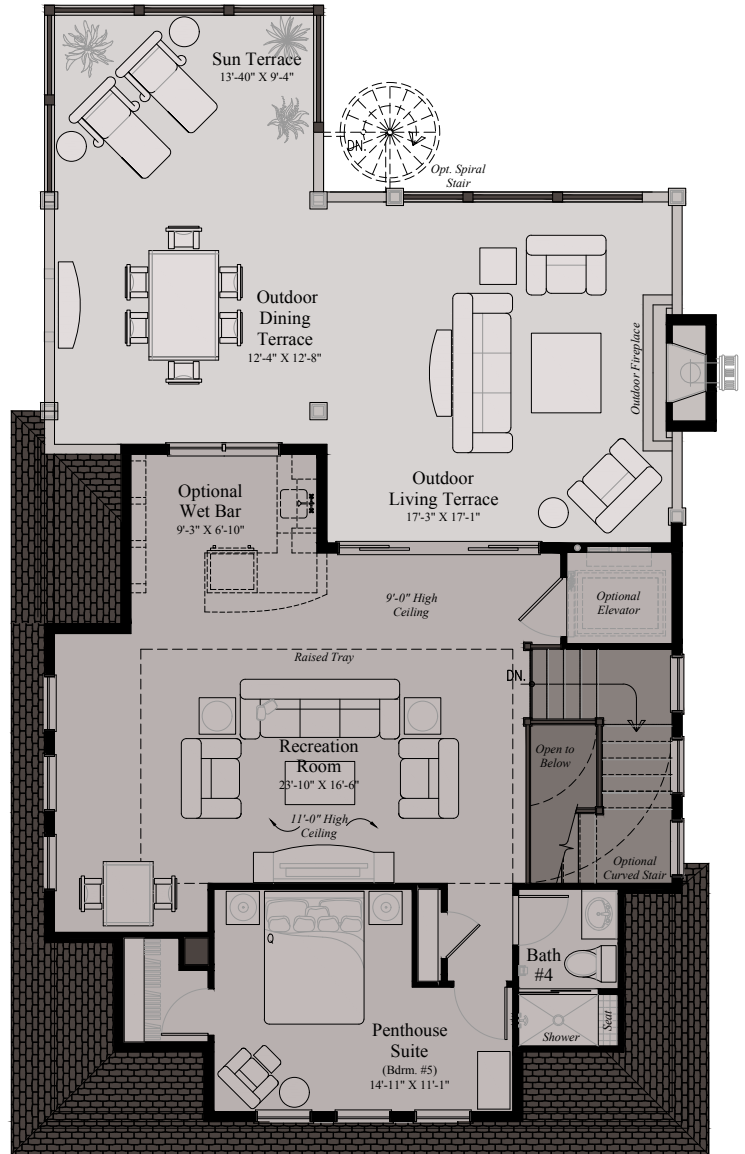


**THE CITY HOME WITH CAMBRIDGE PACKAGE - MAIN LEVEL**

Design and details are the exclusive property of Wormald Homes, Inc. Unauthorized use is strictly prohibited. Actual product and specifications may vary in dimension or detail from these drawings and are subject to change without notice. Window and door locations vary per elevation. MHBR No. 3514



UPPER LEVEL



PENTHOUSE LEVEL