

# THE CHELSEA



Elevation A



Elevation B



Elevation C

## **BRENTWOOD SPRINGS** **The Mount Vernon Collection**

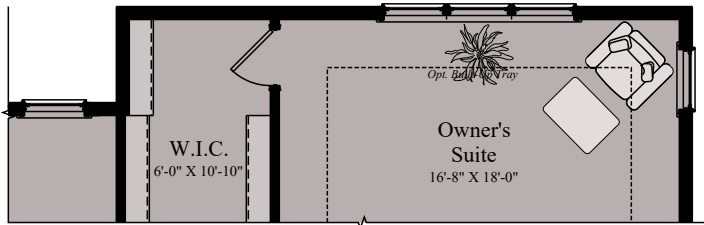
Charlie McAuliffe, Sales Manager  
540.751.9103 | [Charlie.McAuliffe@wormald.com](mailto:Charlie.McAuliffe@wormald.com)  
17289 Creekside Green Place, Purcellville / Round Hill VA 20141  
Open Daily 11 a.m. - 5 p.m.  
or by appointment

**W**  
**ORMALD**

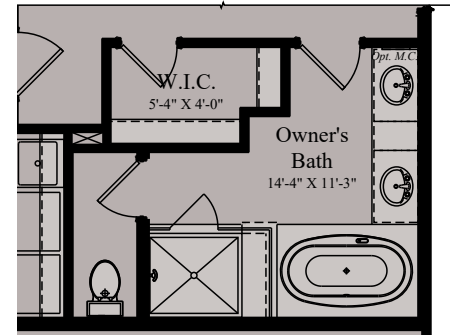
Brokers welcome. Prices  
are rounded and subject to  
change without notice.



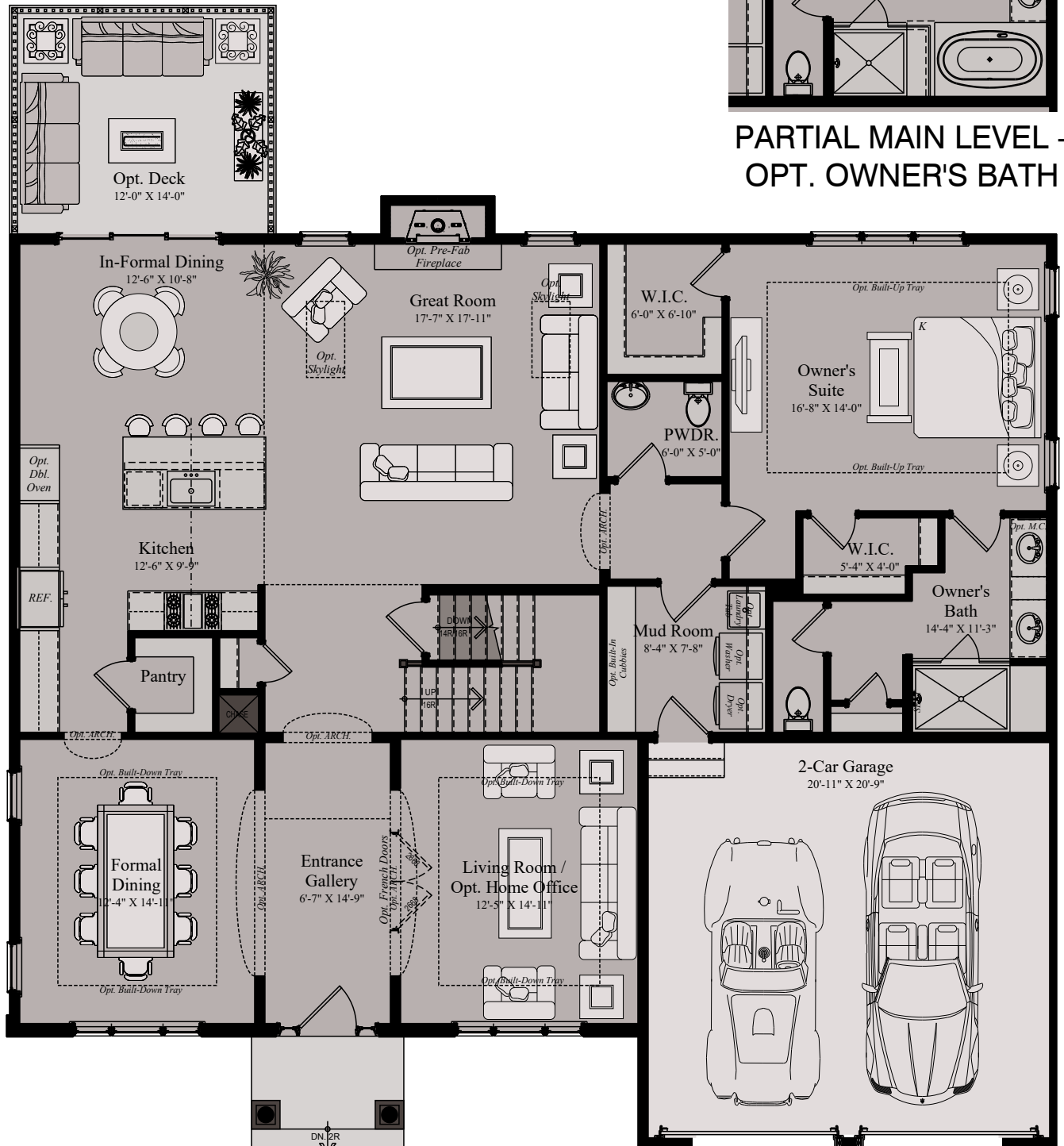
# CHELSEA



PARTIAL MAIN LEVEL - OPT. 4'  
OWNER'S SUITE EXTENSION



PARTIAL MAIN LEVEL -  
OPT. OWNER'S BATH



MAIN LEVEL



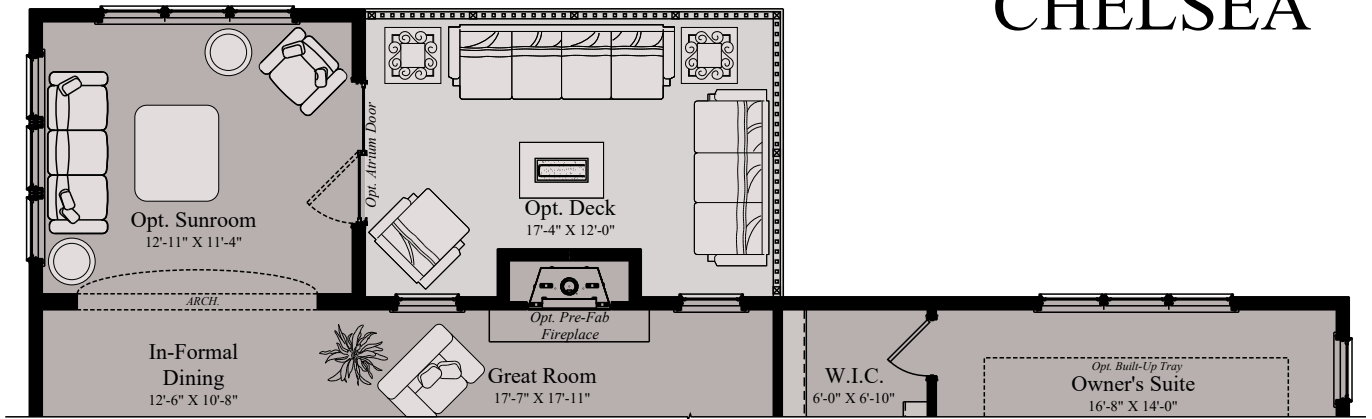
08/07/2018

WORMALD CORPORATION - ALL RIGHTS RESERVED

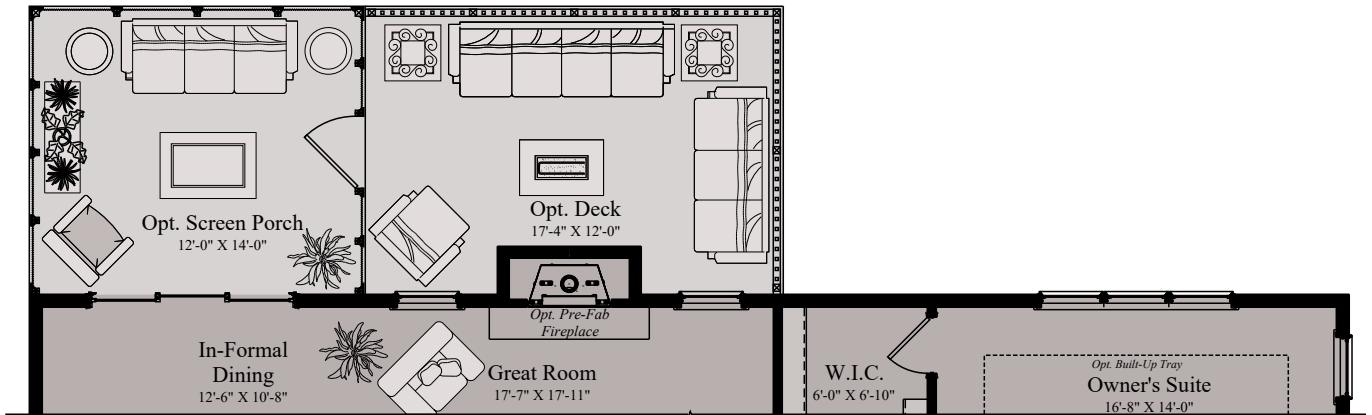
All ideas, designs, arrangements and plans indicated or represented by this drawing and written material appearing herein constitute the original and unpublished work of the Wormald corporation and may not be duplicated, used or disclosed to any person, firm or corporation for any purpose whatsoever without the written consent of the wormald corporation. Actual product and specifications may vary in dimension or detail from these drawings and are subject to change without notice. Window and door locations vary per elevation. MHBR No. 3514

**W**  
**WORMALD**

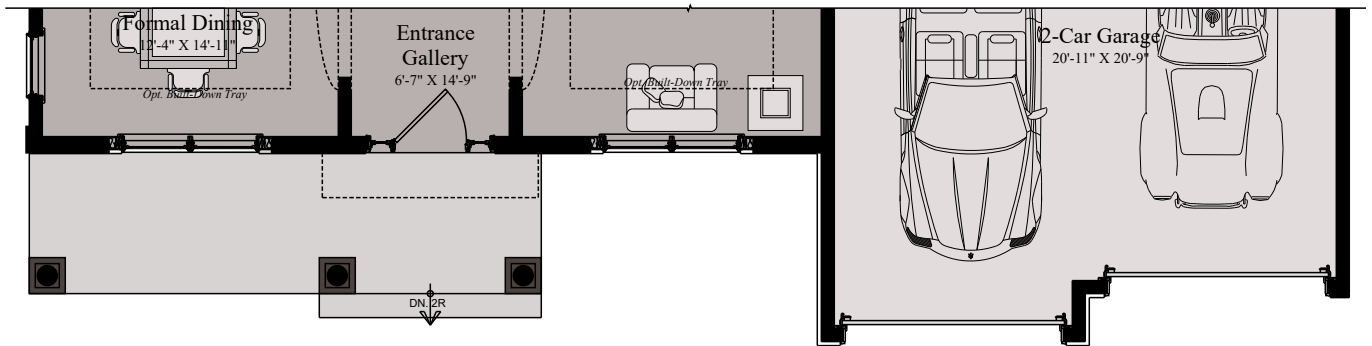
# CHELSEA



PARTIAL MAIN LEVEL -  
OPTIONAL SUNROOM



PARTIAL MAIN LEVEL -  
OPTIONAL SCREEN PORCH



PARTIAL MAIN LEVEL -  
ELEVATION B



PARTIAL MAIN LEVEL -  
ELEVATION C

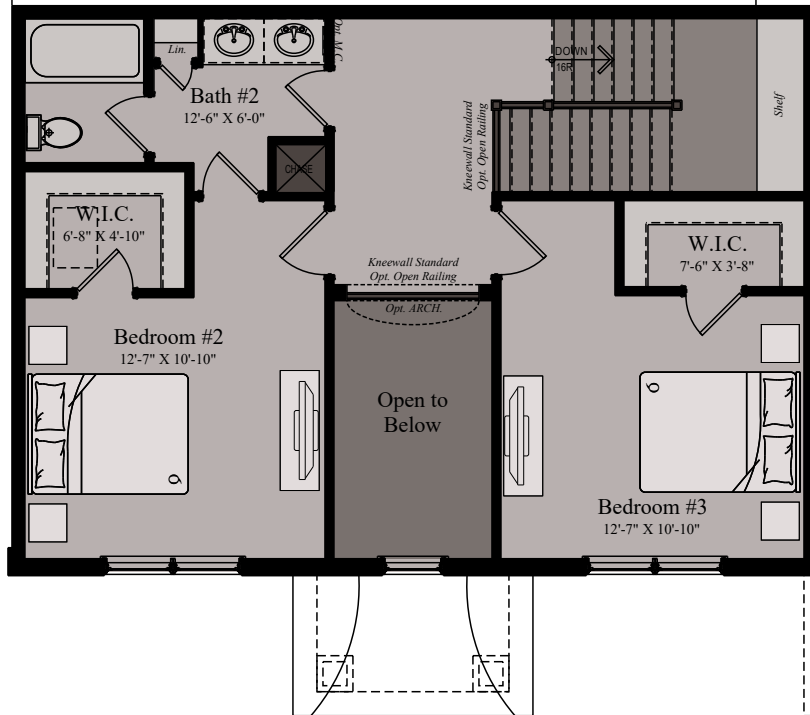


08/07/2018

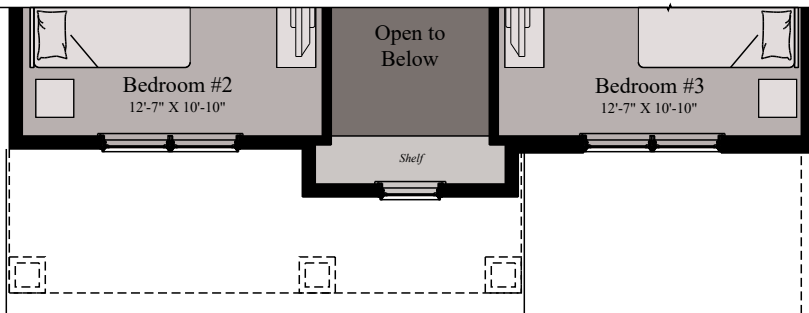
WORMALD CORPORATION - ALL RIGHTS RESERVED  
All ideas, designs, arrangements and plans indicated or represented by this drawing and written material appearing herein constitute the original and unpublished work of the Wormald corporation and may not be duplicated, used or disclosed to any person, firm or corporation for any purpose whatsoever without the written consent of the wormald corporation. Actual product and specifications may vary in dimension or detail from these drawings and are subject to change without notice. Window and door locations vary per elevation. MHBR No. 3514

W  
WORMALD

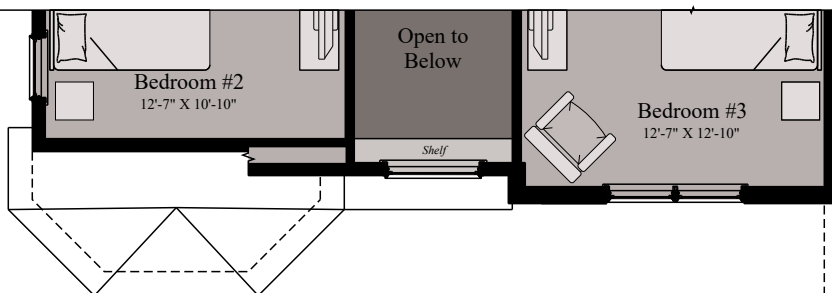
# CHELSEA



UPPER LEVEL



PARTIAL UPPER LEVEL -  
ELEVATION B



PARTIAL UPPER LEVEL -  
ELEVATION C



08/07/2018

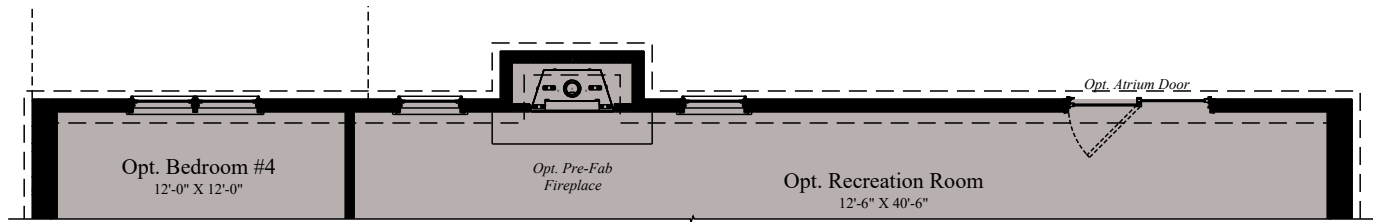
WORMALD CORPORATION - ALL RIGHTS RESERVED

All ideas, designs, arrangements and plans indicated or represented by this drawing and written material appearing herein constitute the original and unpublished work of the Wormald corporation and may not be duplicated, used or disclosed to any person, firm or corporation for any purpose whatsoever without the written consent of the wormald corporation. Actual product and specifications may vary in dimension or detail from these drawings and are subject to change without notice. Window and door locations vary per elevation. MHBR No. 3514

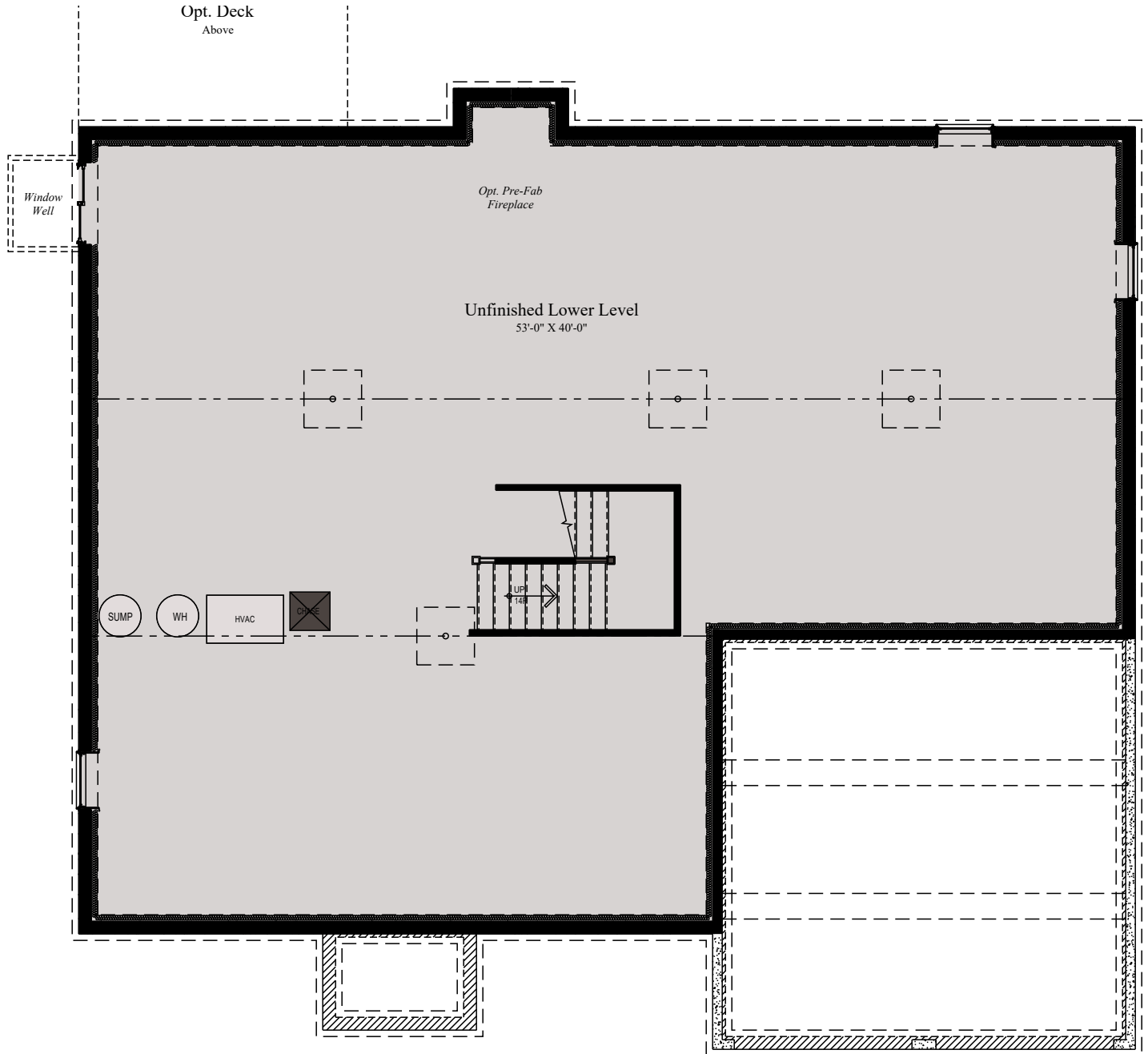
**W**  
**WORMALD**



# CHELSEA



## PARTIAL LOWER LEVEL - WALK-OUT



## LOWER LEVEL - UN-FINISHED



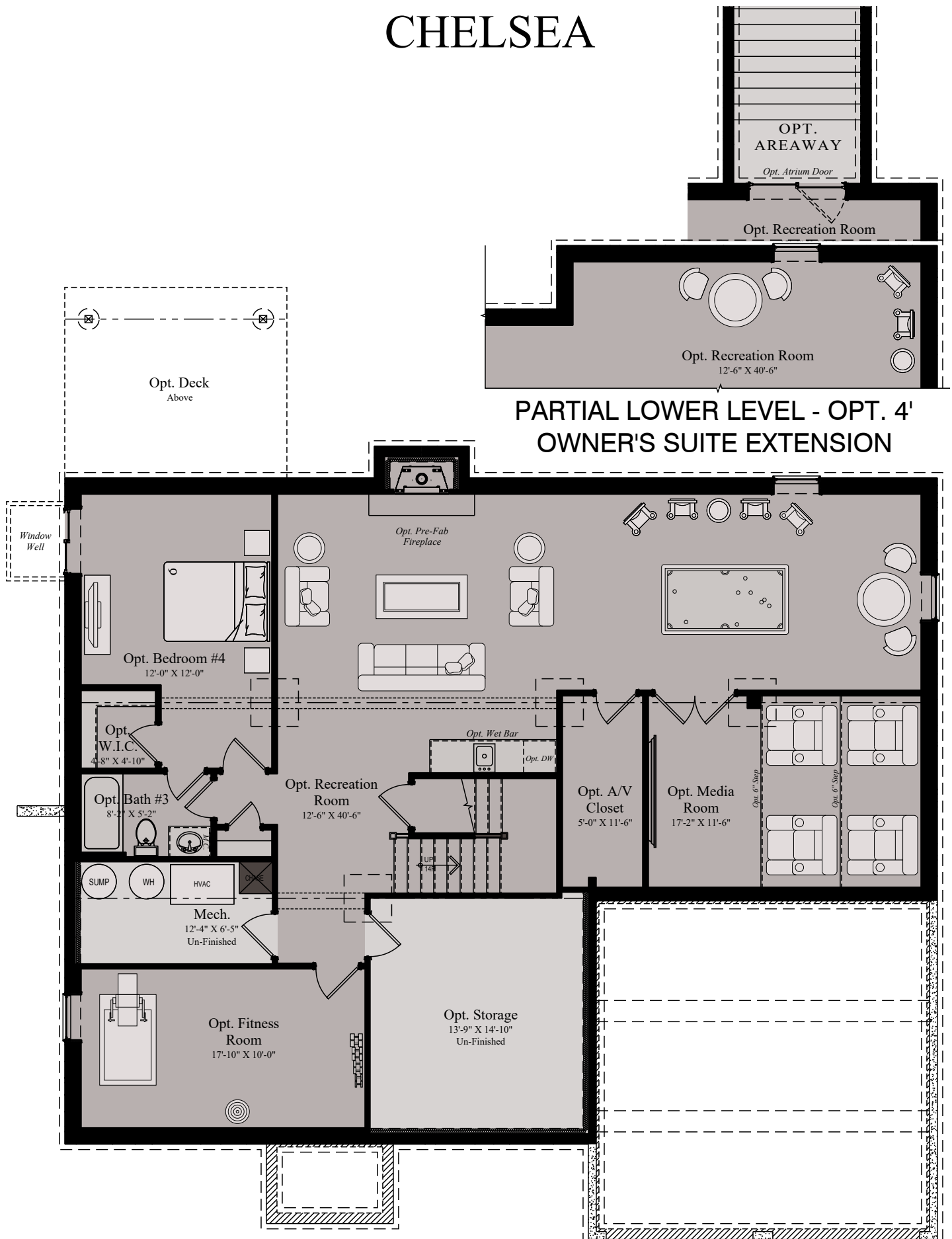
08/07/2018

WORMALD CORPORATION - ALL RIGHTS RESERVED

All ideas, designs, arrangements and plans indicated or represented by this drawing and written material appearing herein constitute the original and unpublished work of the Wormald corporation and may not be duplicated, used or disclosed to any person, firm or corporation for any purpose whatsoever without the written consent of the wormald corporation. Actual product and specifications may vary in dimension or detail from these drawings and are subject to change without notice. Window and door locations vary per elevation. MHBR No. 3514

**W**  
**WORMALD**

# CHELSEA



## PARTIAL LOWER LEVEL - OPT. 4' OWNER'S SUITE EXTENSION

## LOWER LEVEL - FINISHED

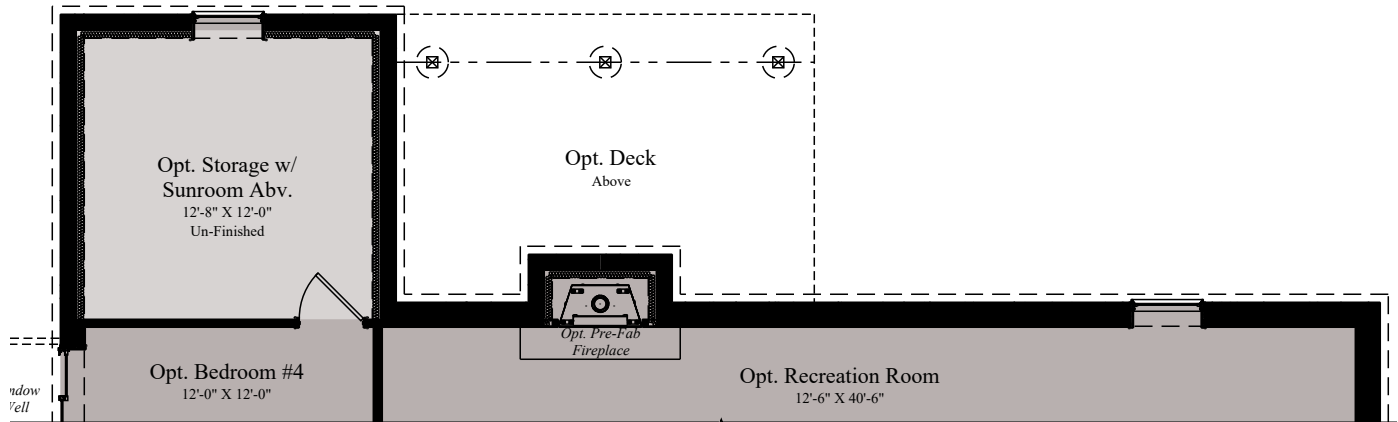
WORMALD CORPORATION - ALL RIGHTS RESERVED

All ideas, designs, arrangements and plans indicated or represented by this drawing and written material appearing herein constitute the original and unpublished work of the Wormald corporation and may not be duplicated, used or disclosed to any person, firm or corporation for any purpose whatsoever without the written consent of the wormald corporation. Actual product and specifications may vary in dimension or detail from these drawings and are subject to change without notice. Window and door locations vary per elevation. MHBR No. 3514

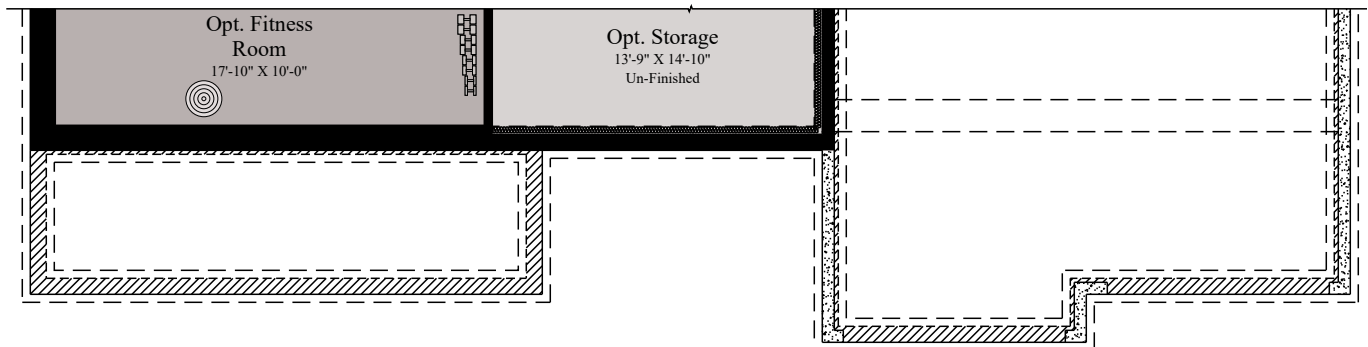


08/07/2018

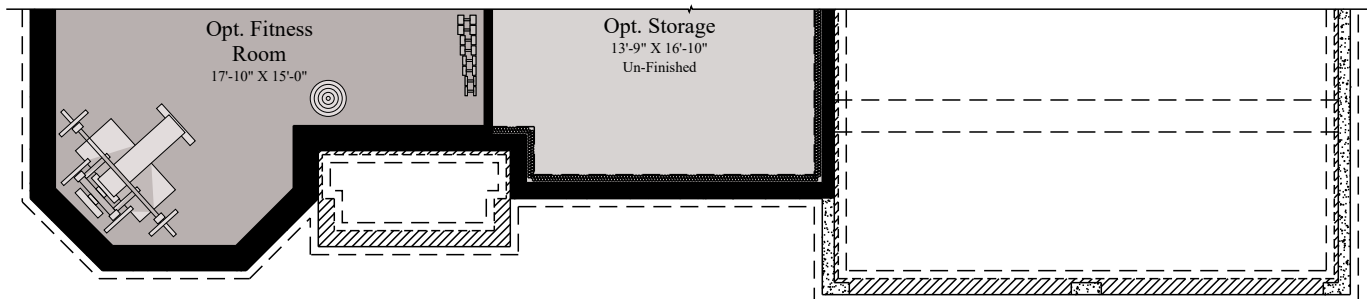
**W**  
**WORMALD**



**PARTIAL LOWER LEVEL -  
OPTIONAL STORAGE**



**PARTIAL LOWER LEVEL -  
ELEVATION B**



**PARTIAL LOWER LEVEL -  
ELEVATION C**

**LOVE**  
**WHERE**  
**YOU**  
**LIVE**

**W**  
**W O R M A L D**  
[www.wormald.com](http://www.wormald.com)