

# THE BALMORAL



Elevation A



Elevation B



Elevation C

## **BRENTWOOD SPRINGS** **The Mount Vernon Collection**

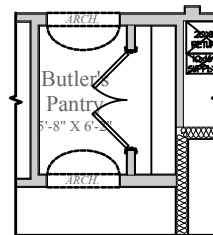
Charlie McAuliffe, Sales Manager  
540.751.9103 | [Charlie.McAuliffe@wormald.com](mailto:Charlie.McAuliffe@wormald.com)  
17289 Creekside Green Place, Purcellville / Round Hill VA 20141  
Open Daily 11 a.m. - 5 p.m.  
or by appointment

**W**  
**ORMALD**

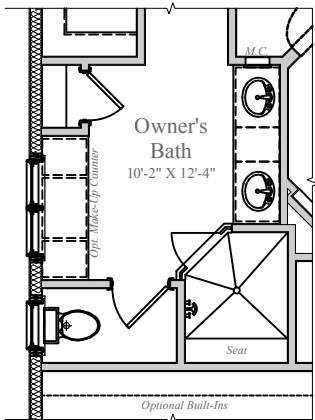
Brokers welcome. Prices  
are rounded and subject to  
change without notice.



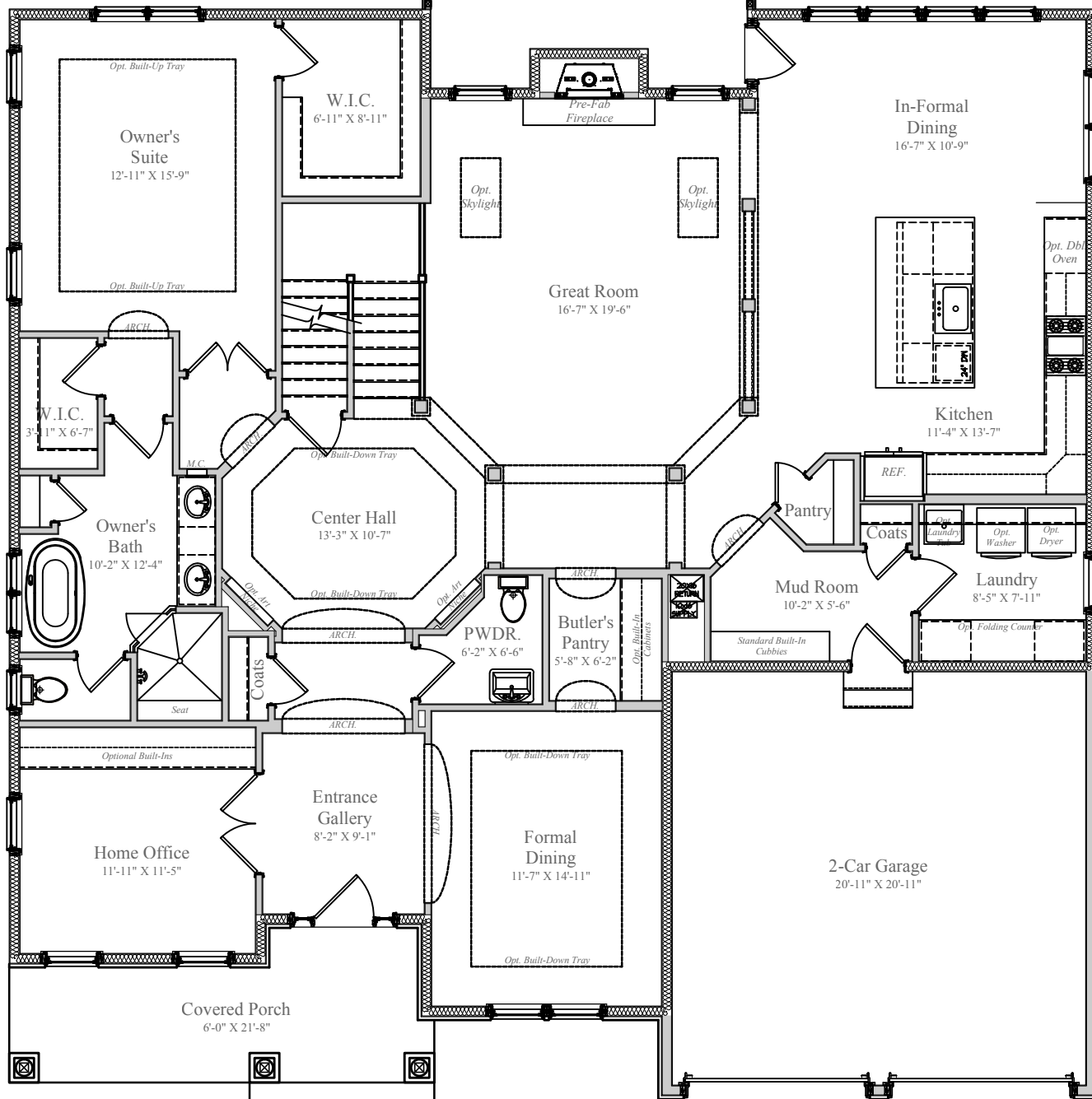
# BALMORAL



OPT. BUTLER'S  
PANTRY CLOSET



## OPT. OWNER'S BATH



## MAIN LEVEL

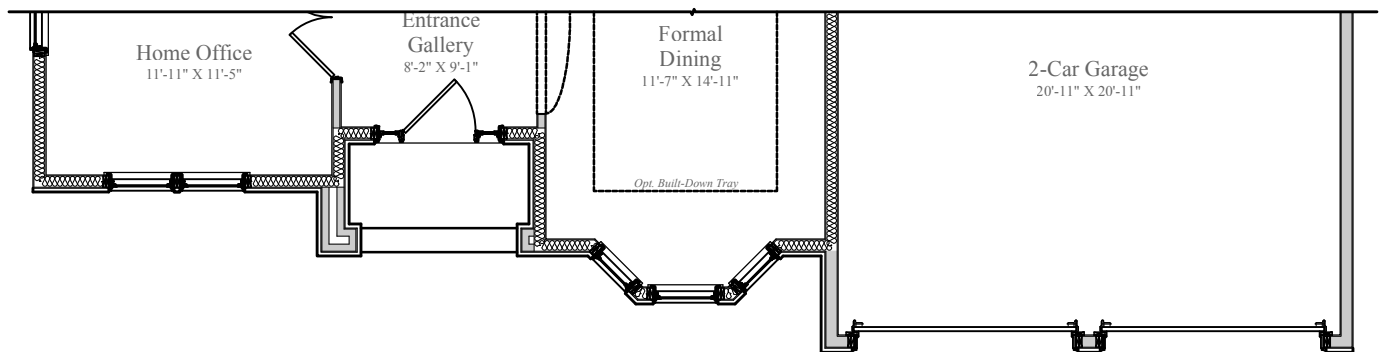


11/4/2016

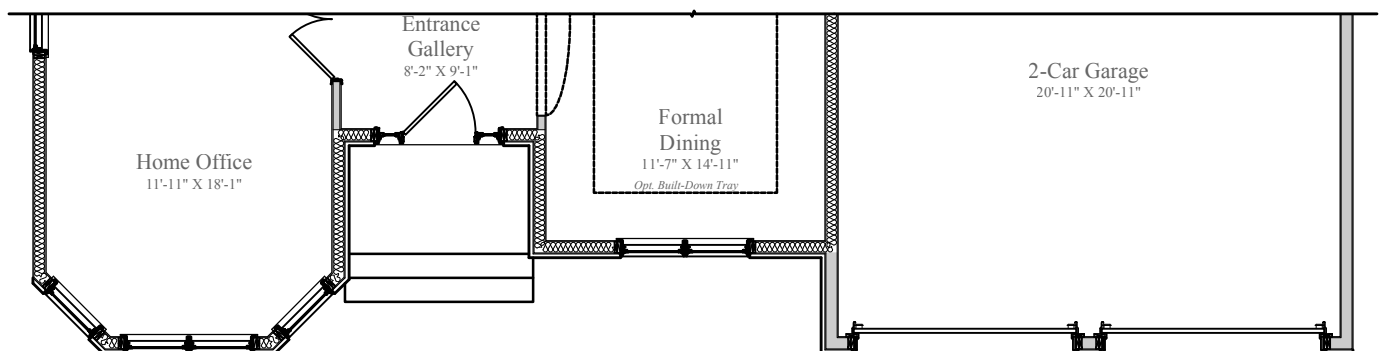
Design and details are the exclusive property of Wormald Homes, Inc. Unauthorized use is strictly prohibited. Actual product and specifications may vary in dimension or detail from these drawings and are subject to change without notice. Window and door locations vary per elevation. MHBR No. 3514

W  
W O R M A L D

# BALMORAL



PARTIAL MAIN LEVEL - ELEVATION B



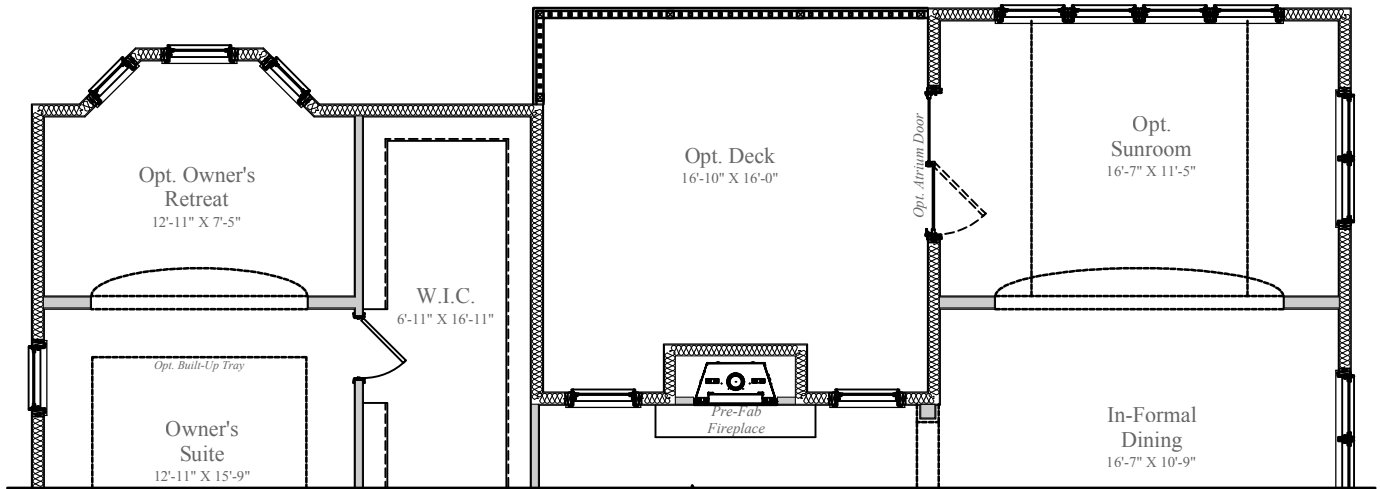
PARTIAL MAIN LEVEL - ELEVATION C



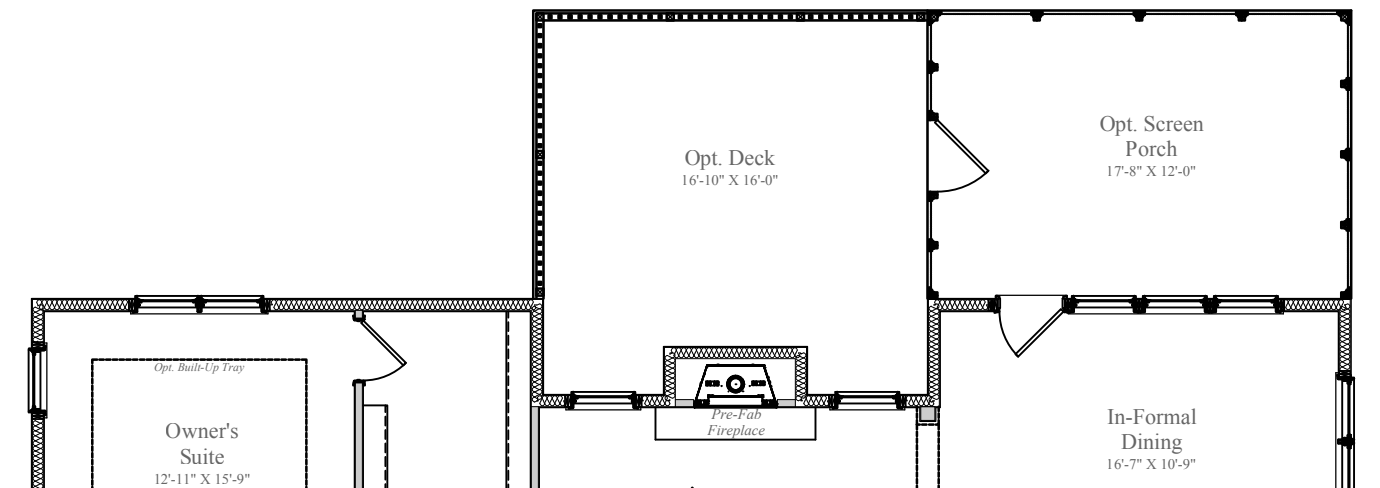
11/4/2016

Design and details are the exclusive property of Wornald Homes, Inc. Unauthorized use is strictly prohibited. Actual product and specifications may vary in dimension or detail from these drawings and are subject to change without notice. Window and door locations vary per elevation. MHBR No. 3514

**W**  
**WORNALD**

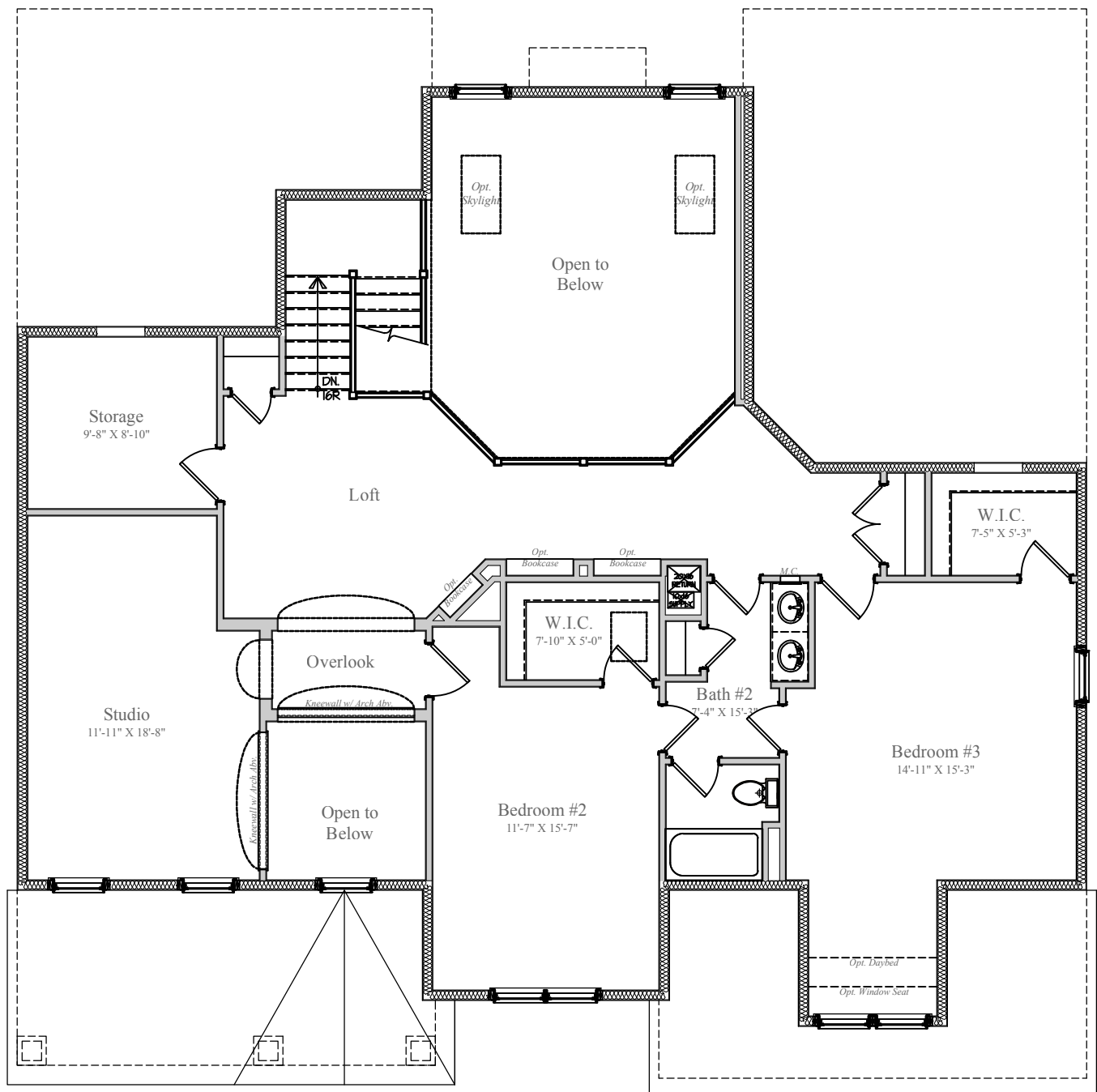


PARTIAL MAIN LEVEL - W/ OWNER  
SUITE EXTENSION & SUNROOM



PARTIAL MAIN LEVEL - W/  
SCREEN PORCH

# BALMORAL



## UPPER LEVEL

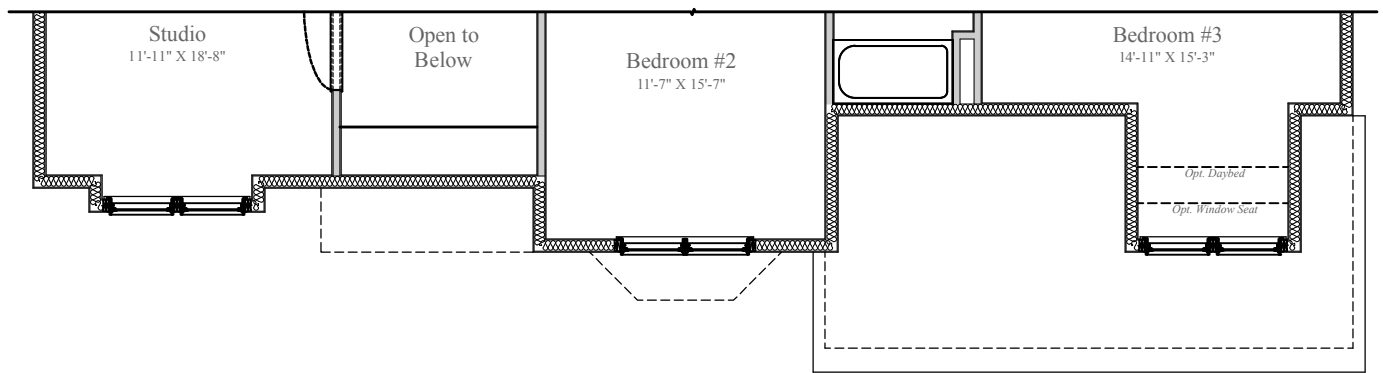


11/4/2016

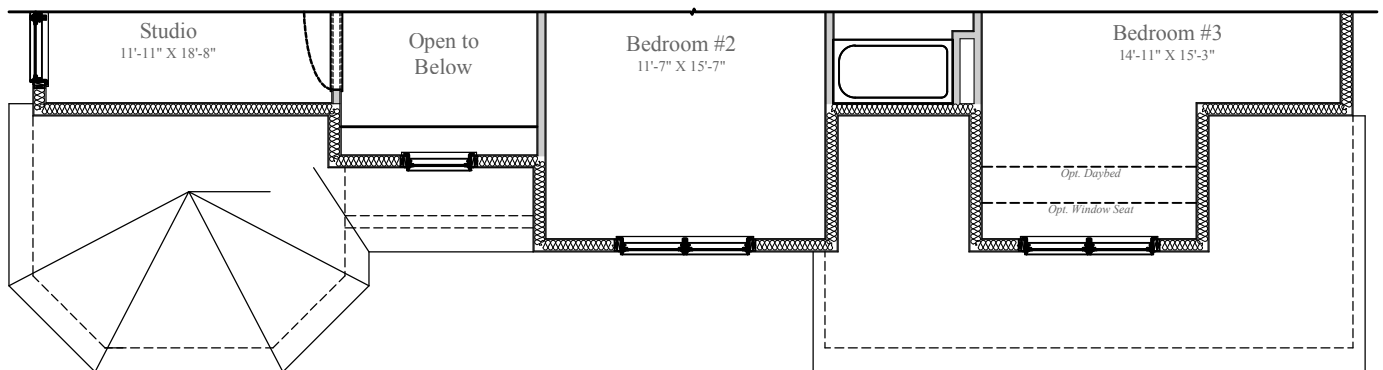
Design and details are the exclusive property of Wornald Homes, Inc. Unauthorized use is strictly prohibited. Actual product and specifications may vary in dimension or detail from these drawings and are subject to change without notice. Window and door locations vary per elevation. MHBR No. 3514

**W**  
**WORNALD**

# BALMORAL



PARTIAL UPPER LEVEL - ELEVATION B



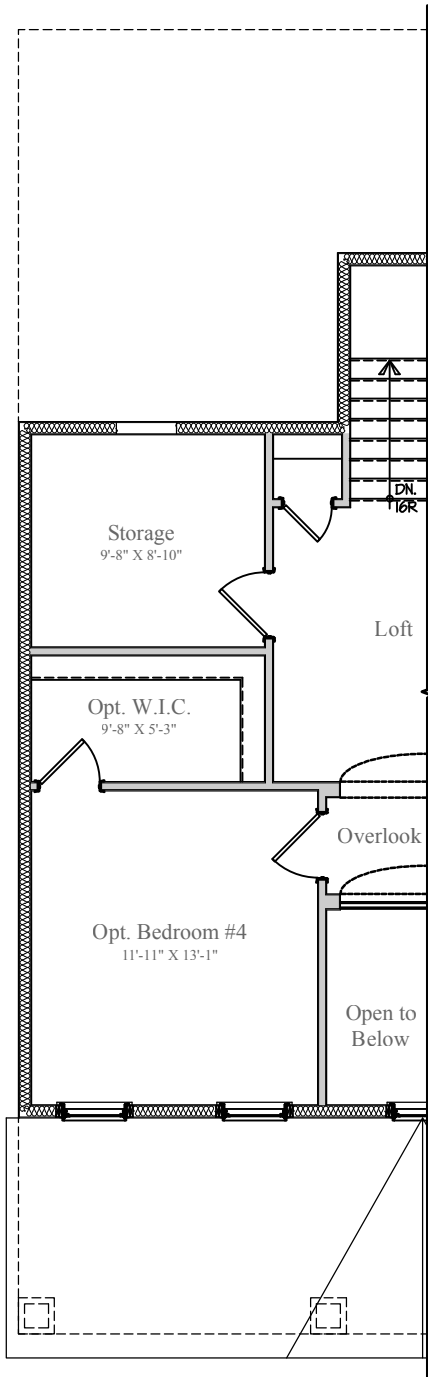
PARTIAL UPPER LEVEL - ELEVATION C



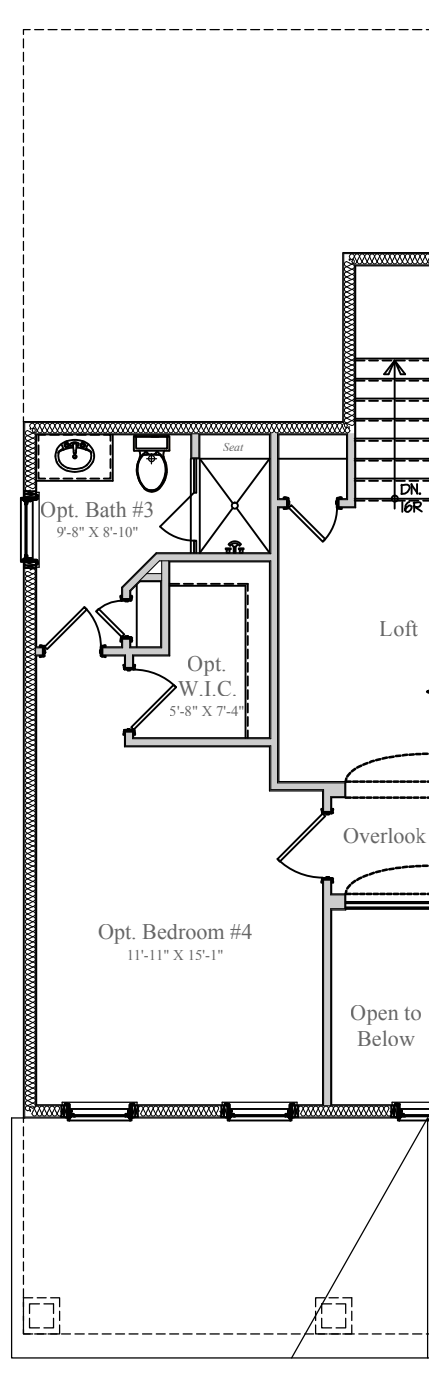
11/4/2016

Design and details are the exclusive property of Wornald Homes, Inc. Unauthorized use is strictly prohibited. Actual product and specifications may vary in dimension or detail from these drawings and are subject to change without notice. Window and door locations vary per elevation. MHBR No. 3514

**W**  
**WORNALD**



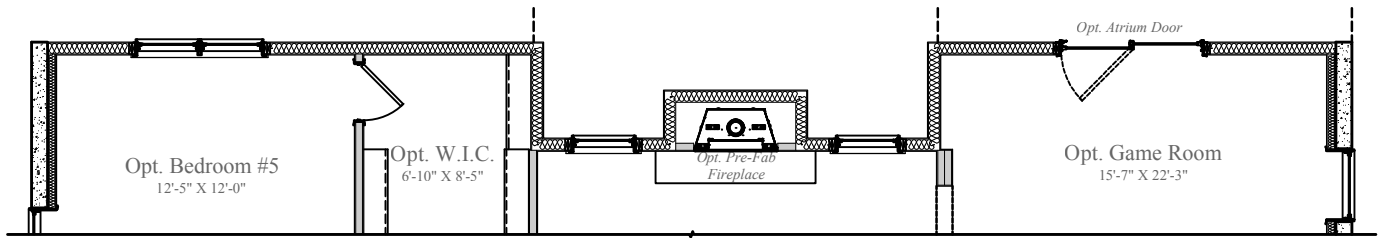
**PARTIAL UPPER LEVEL -  
WITH OPT. BEDROOM #4**



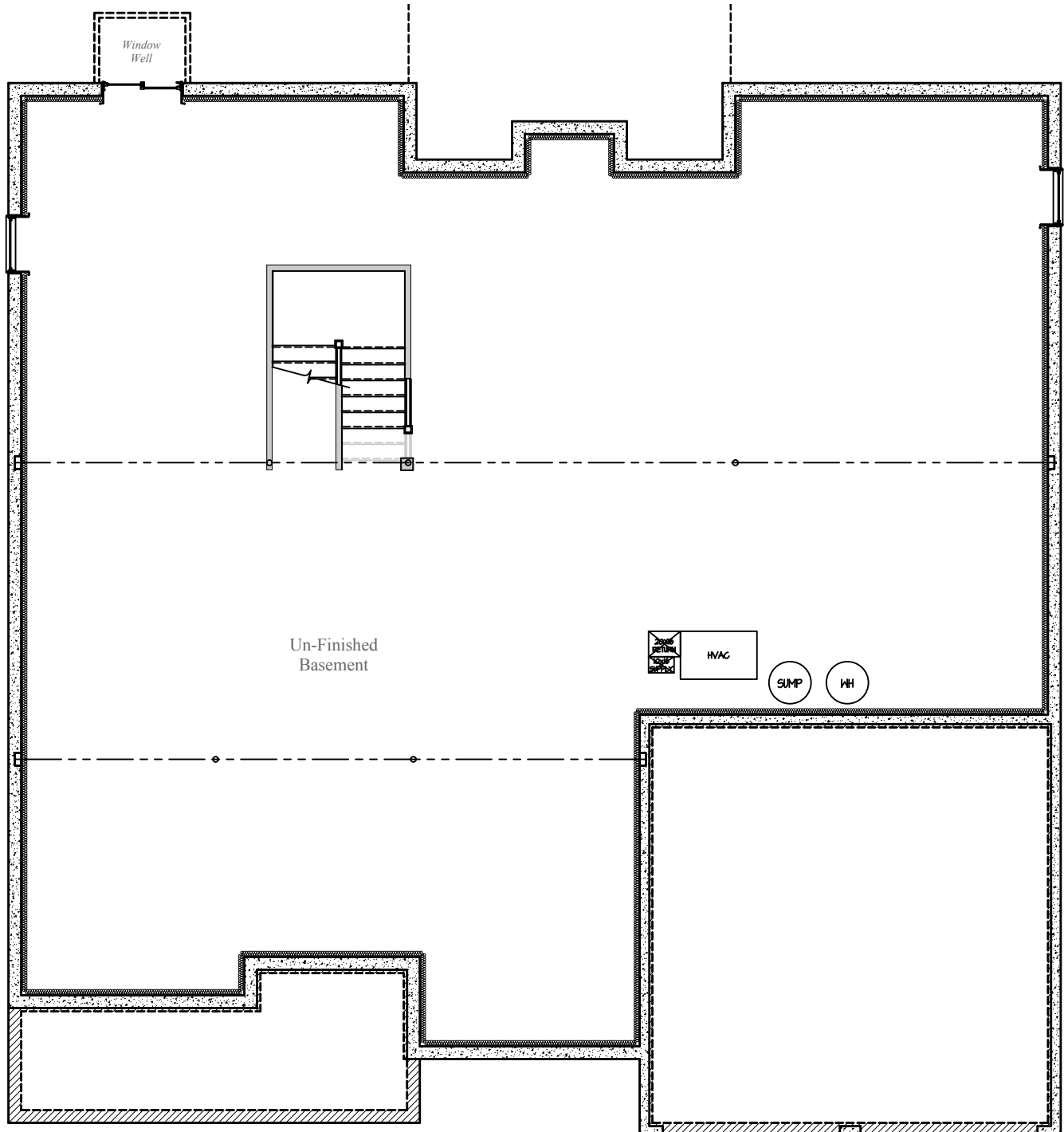
**PARTIAL UPPER LEVEL -  
WITH OPT. BEDROOM #4  
& BATH #3**



# BALMORAL



LOWER LEVEL - WALK-OUT



LOWER LEVEL - UN-FINISHED



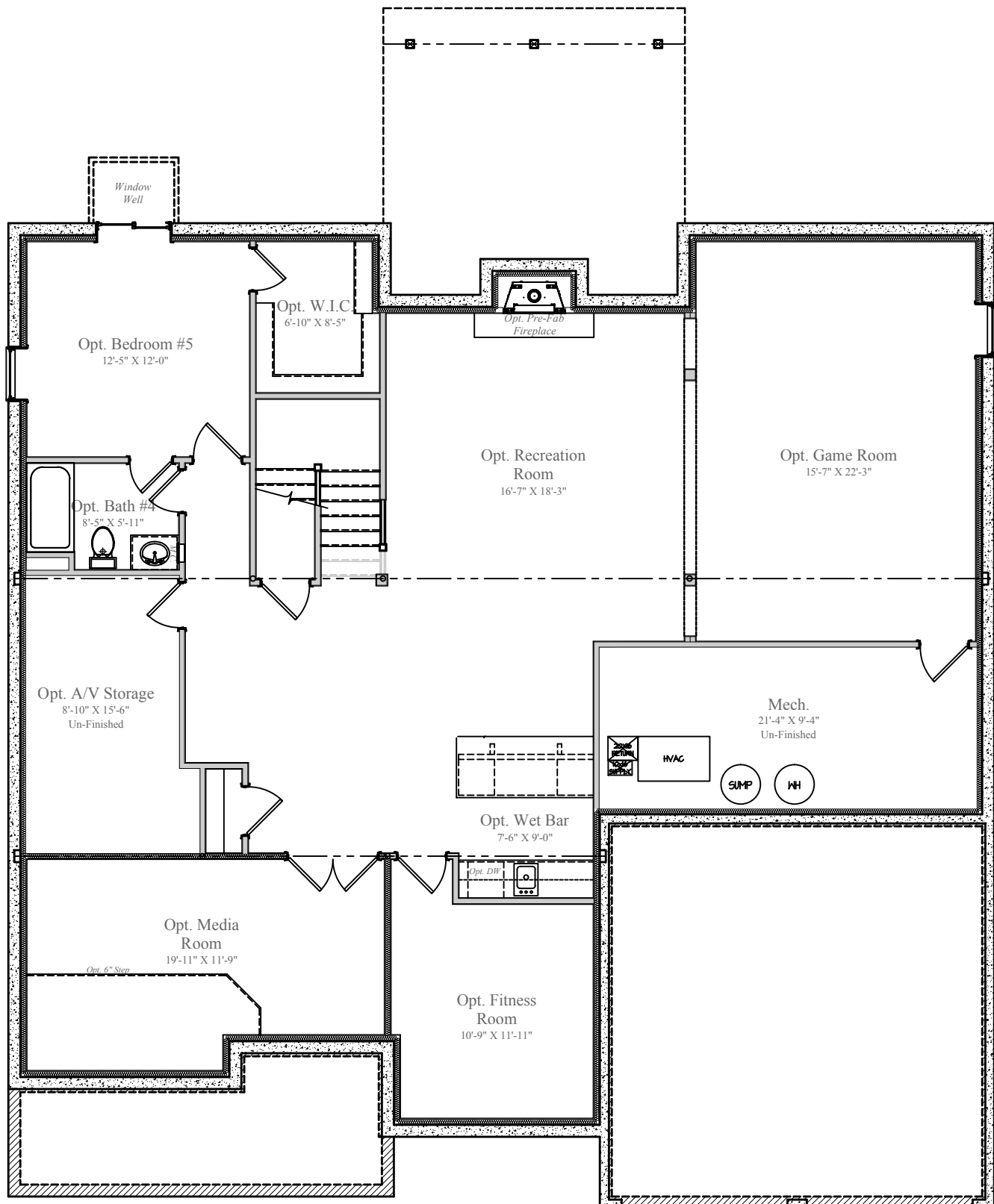
11/4/2016

Design and details are the exclusive property of Wormald Homes, Inc. Unauthorized use is strictly prohibited. Actual product and specifications may vary in dimension or detail from these drawings and are subject to change without notice. Window and door locations vary per elevation. MHBR No. 3514

**W**  
**W O R M A L D**



# BALMORAL



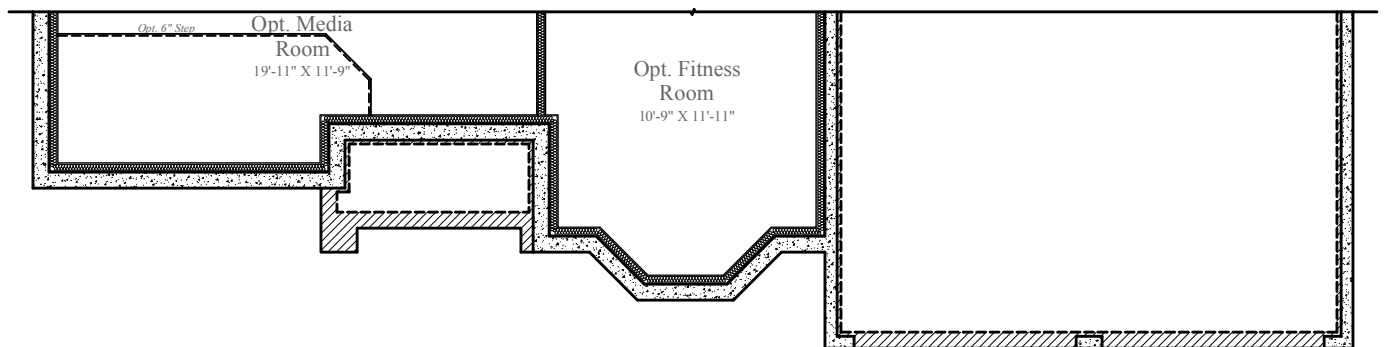
## LOWER LEVEL - FINISHED



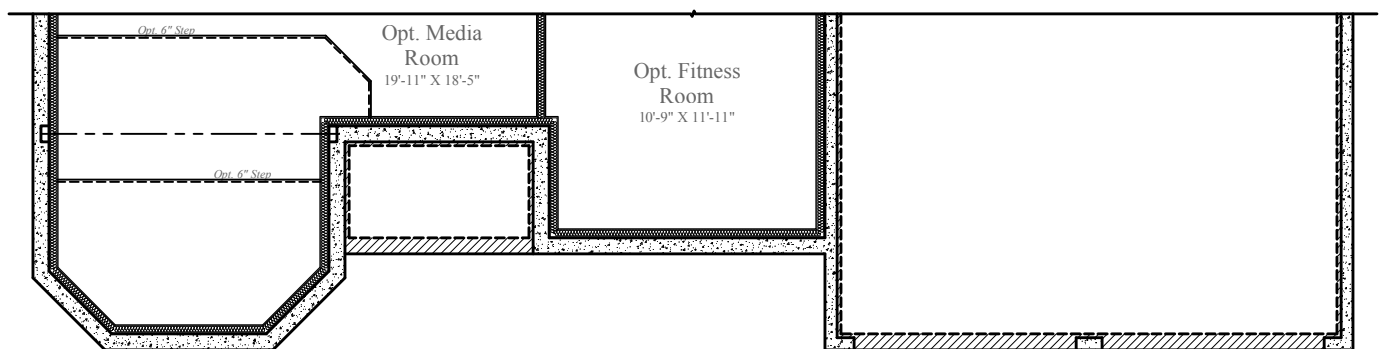
11/4/2016

Design and details are the exclusive property of Wormald Homes, Inc. Unauthorized use is strictly prohibited. Actual product and specifications may vary in dimension or detail from these drawings and are subject to change without notice. Window and door locations vary per elevation. MHBR No. 3514

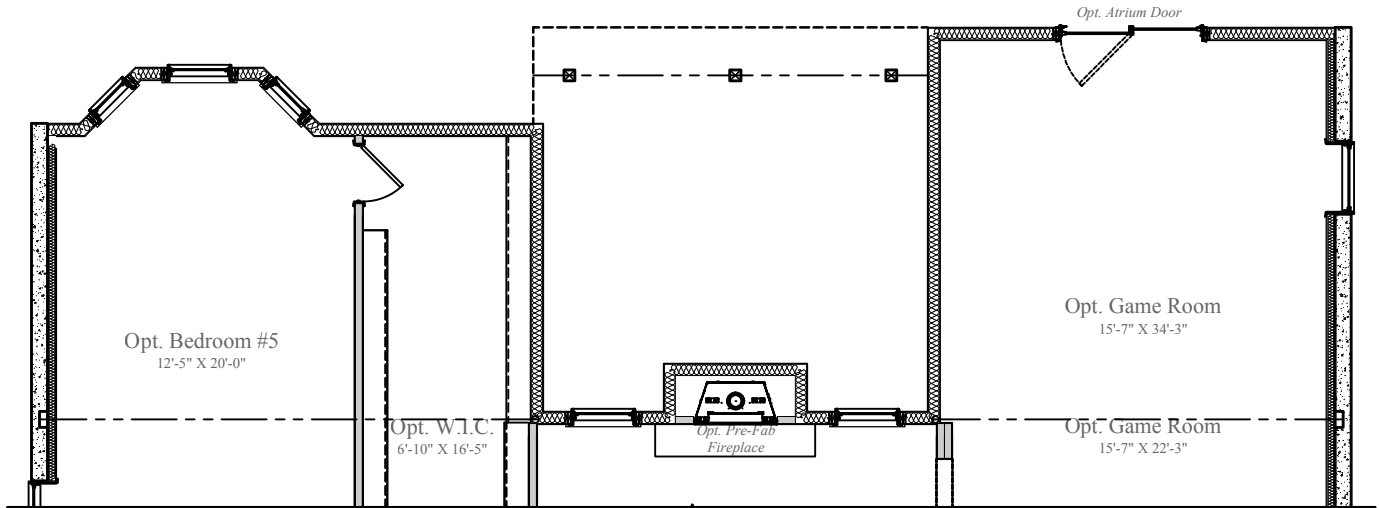
**W**  
**WORMALD**



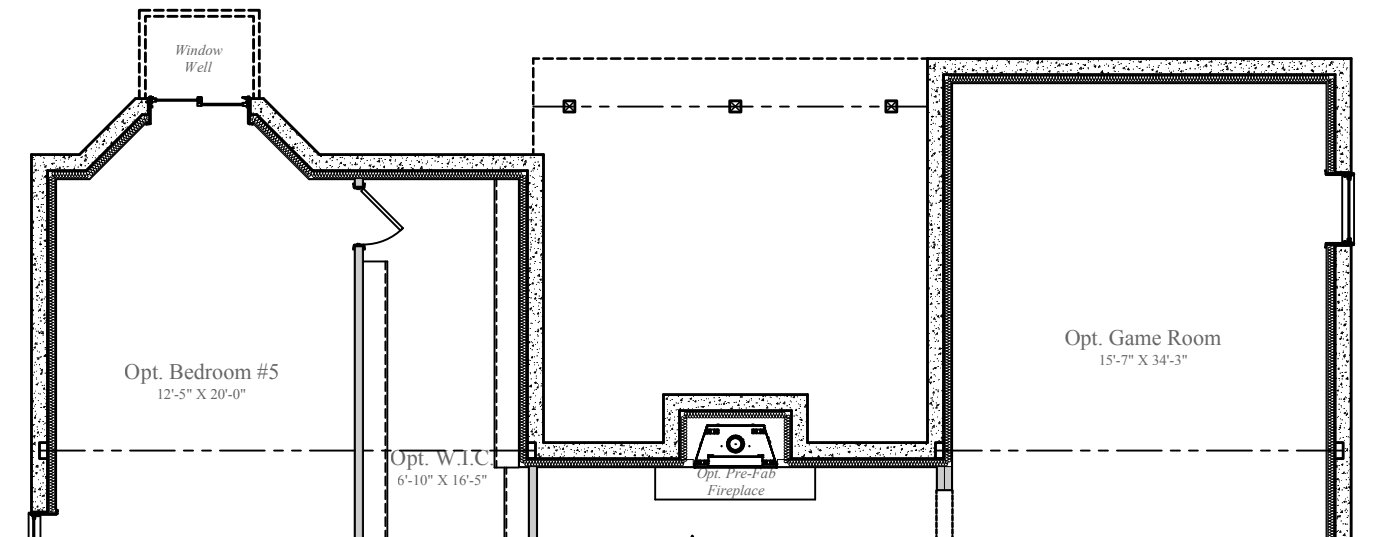
PARTIAL LOWER LEVEL - ELEVATION B



PARTIAL LOWER LEVEL - ELEVATION C



**PARTIAL LOWER LEVEL - W/ OWNER  
SUITE EXTENSION & SUNROOM WALK-OUT**



**PARTIAL LOWER LEVEL - W/ OWNER  
SUITE EXTENSION & SUNROOM**

**LOVE**  
**WHERE**  
**YOU**  
**LIVE**

**W**  
**W O R M A L D**  
[www.wormald.com](http://www.wormald.com)