

# THE AMARI



## THE GROVE Luxury Attached Residences

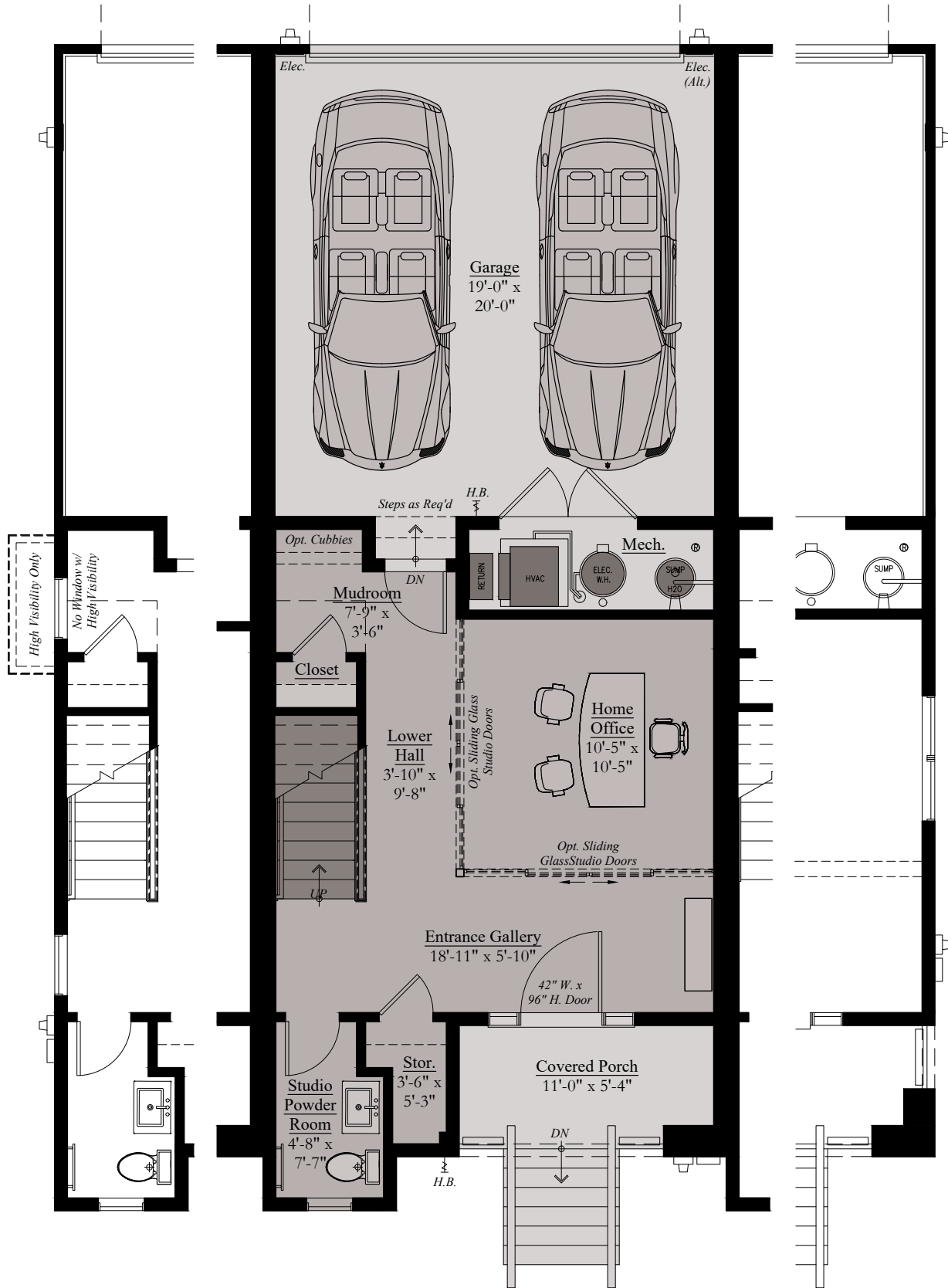
Candice Grams, Sales Manager  
301.691.8029 | [thegrove@wormald.com](mailto:thegrove@wormald.com)  
177 Kentlands Blvd., Suite 200, Gaithersburg, MD 20878  
Open Daily 11 a.m. - 5 p.m. or by appointment

W  
WORMALD

Brokers welcome.  
MHBR No. 9221 (PSTA  
Residential, LLC). Prices  
are rounded and subject  
to change without notice.



# THE AMARI | STUDIO LEVEL



*Typ. End*

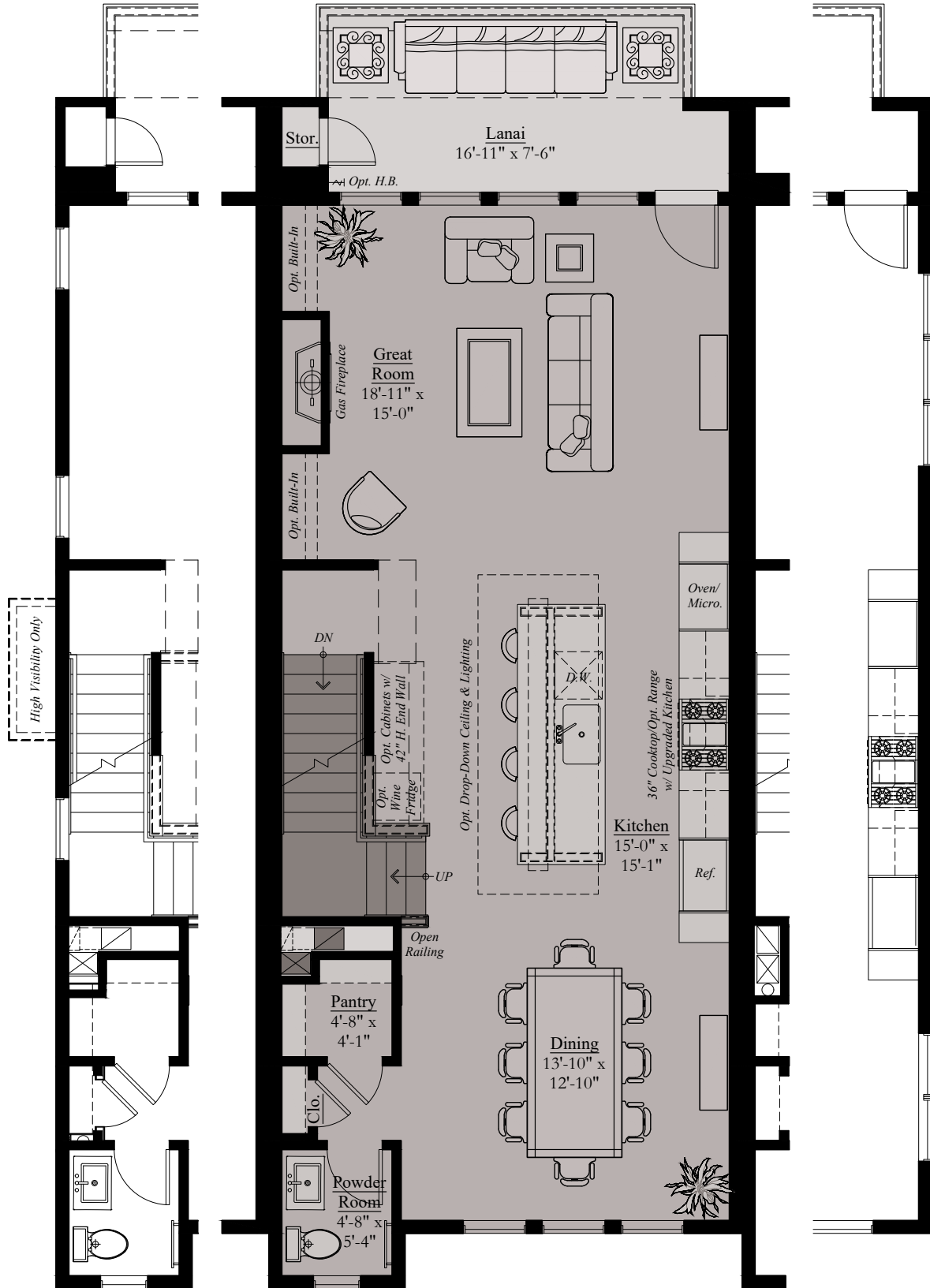
*Typ. Studio Level*

*Typ. End*

**THE AMARI**

Architectural drawings are proprietary to Wormald Corporation. Unauthorized use or duplication of floor plans, concepts, or elevations is strictly prohibited. **Architectural designs are approximate artist's renderings and are for illustrative purposes only. Actual design and detail will vary from what is shown and are subject to change without notice.** Landscape and furniture is for illustrative purposes only. Optional areas are illustrated. Windows, door locations, and square footage may vary per elevation. Please consult Sales Manager for details. © 2024 Wormald Corporation.

# THE AMARI | MAIN LEVEL



*Typ. End*

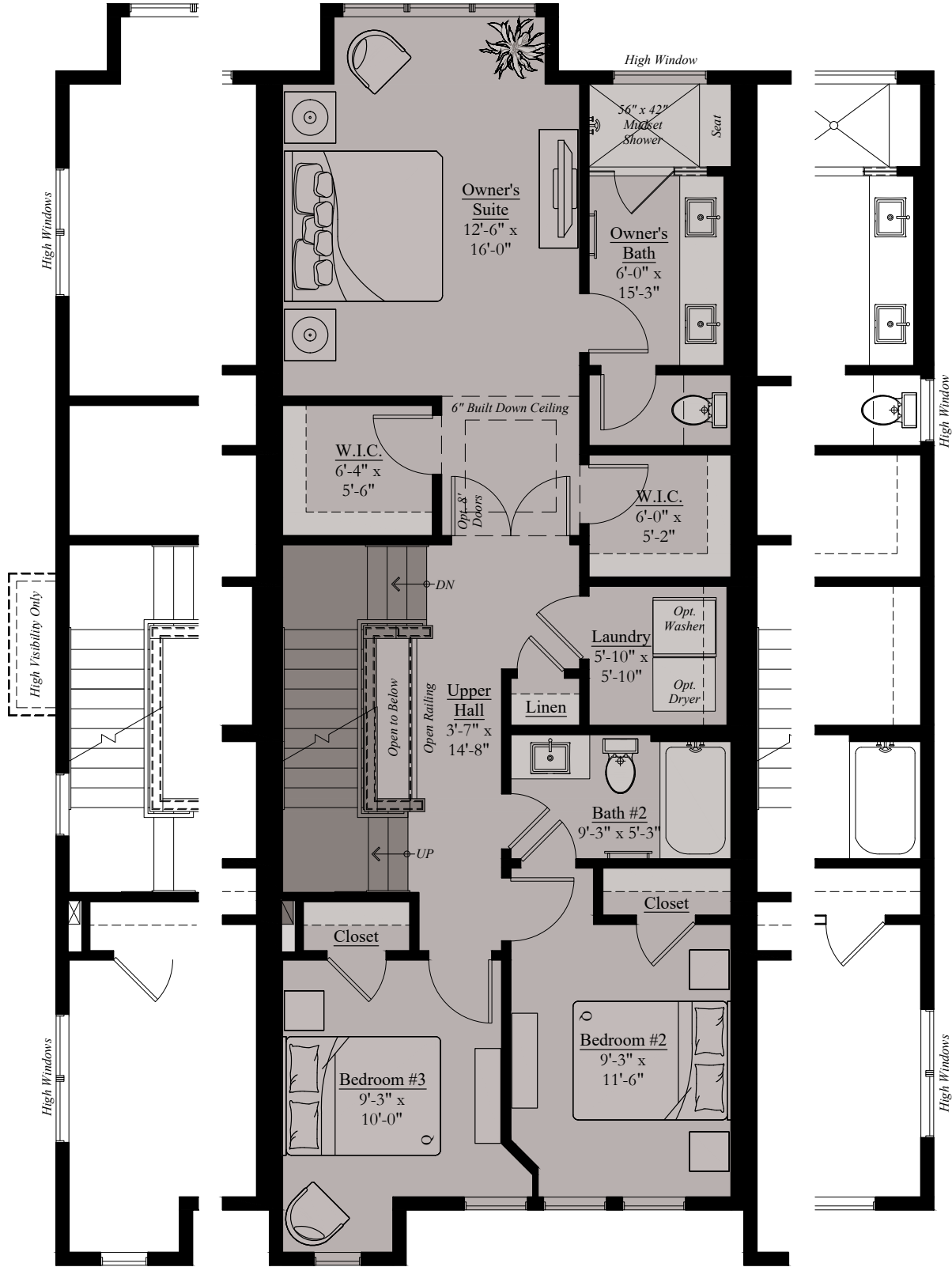
*Typ. Main Level*

*Typ. End*

**THE AMARI**

Architectural drawings are proprietary to Wormald Corporation. Unauthorized use or duplication of floor plans, concepts, or elevations is strictly prohibited. **Architectural designs are approximate artist's renderings and are for illustrative purposes only. Actual design and detail will vary from what is shown and are subject to change without notice.** Landscape and furniture is for illustrative purposes only. Optional areas are illustrated. Windows, door locations, and square footage may vary per elevation. Please consult Sales Manager for details. © 2024 Wormald Corporation.

# THE AMARI | UPPER LEVEL



*Typ. End*

*Typ. Upper Level*

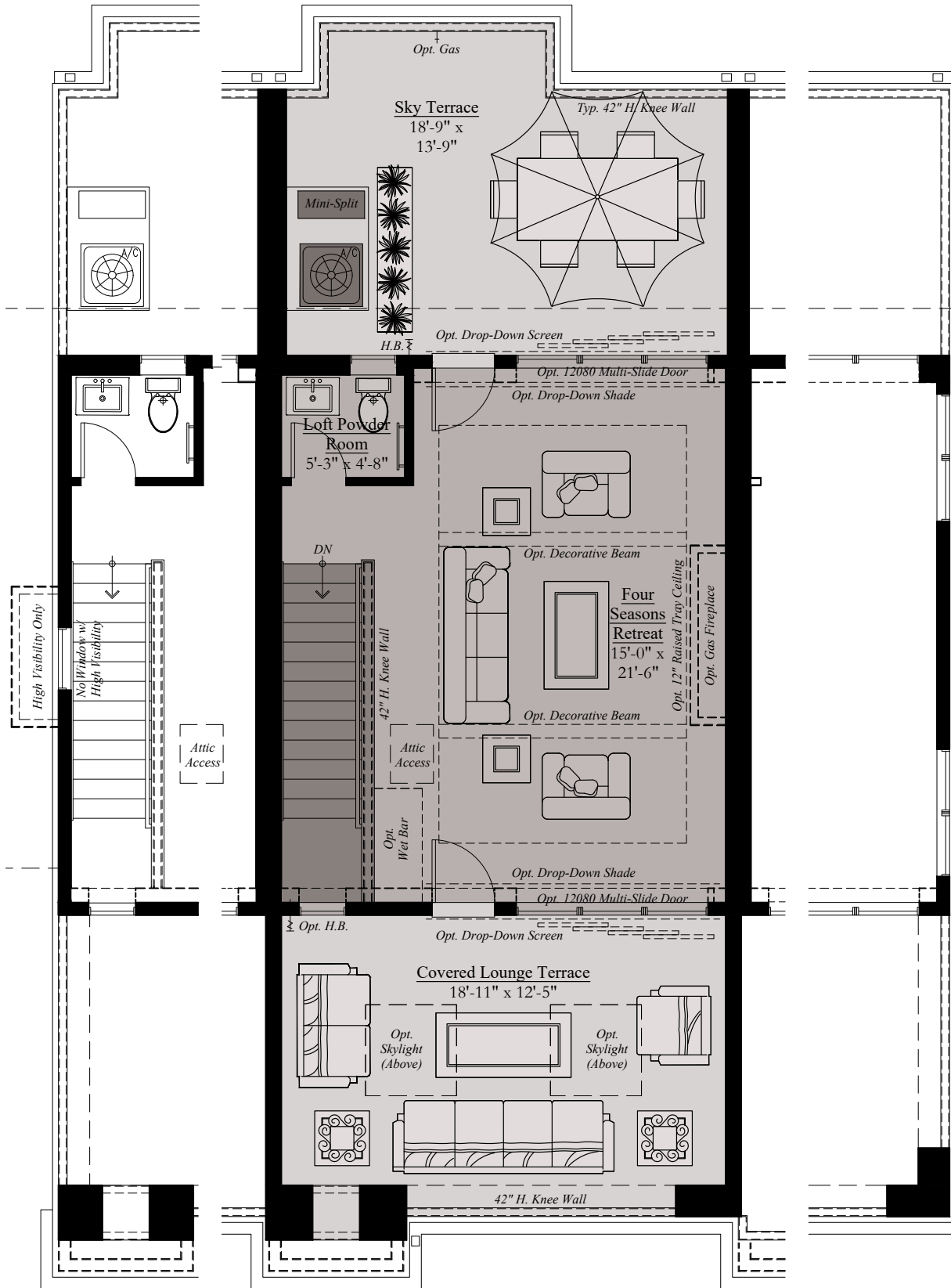
*Typ. End*

## THE AMARI

Architectural drawings are proprietary to Wormald Corporation. Unauthorized use or duplication of floor plans, concepts, or elevations is strictly prohibited. **Architectural designs are approximate artist's renderings and are for illustrative purposes only. Actual design and detail will vary from what is shown and are subject to change without notice.** Landscape and furniture is for illustrative purposes only. Optional areas are illustrated. Windows, door locations, and square footage may vary per elevation. Please consult Sales Manager for details. © 2024 Wormald Corporation.



# THE AMARI | LOFT LEVEL



*Typ. End*

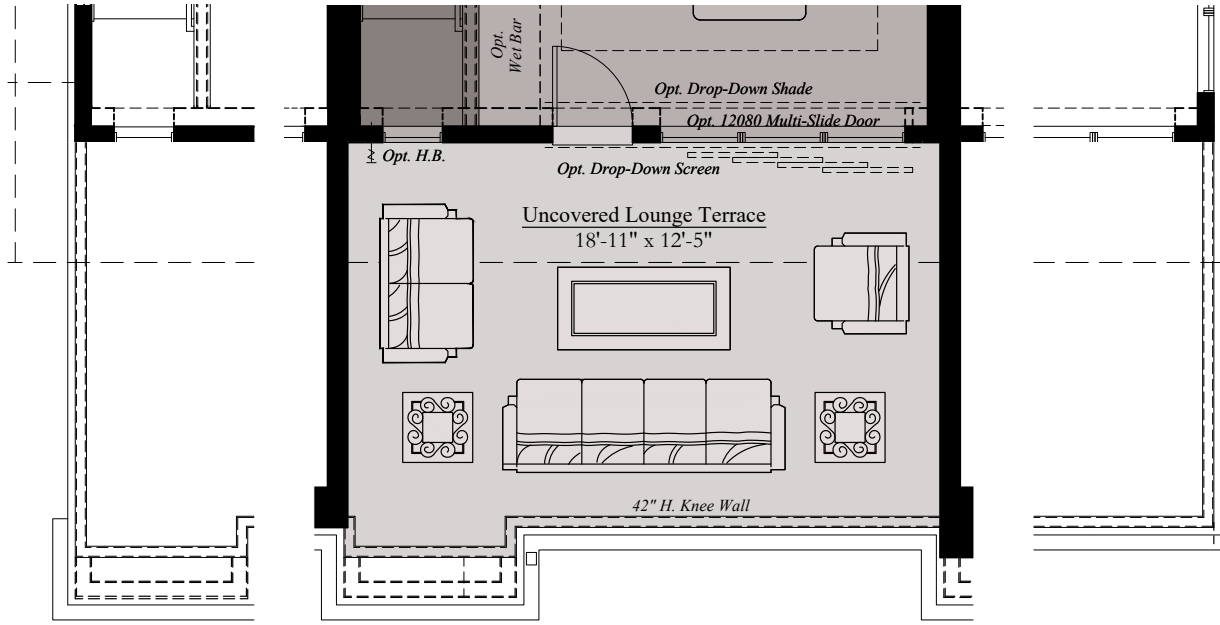
*Typ. 'A', 'B', & 'E' Loft Level*

*Typ. End*

**THE AMARI**

Architectural drawings are proprietary to Wormald Corporation. Unauthorized use or duplication of floor plans, concepts, or elevations is strictly prohibited. **Architectural designs are approximate artist's renderings and are for illustrative purposes only. Actual design and detail will vary from what is shown and are subject to change without notice.** Landscape and furniture is for illustrative purposes only. Optional areas are illustrated. Windows, door locations, and square footage may vary per elevation. Please consult Sales Manager for details. © 2024 Wormald Corporation.

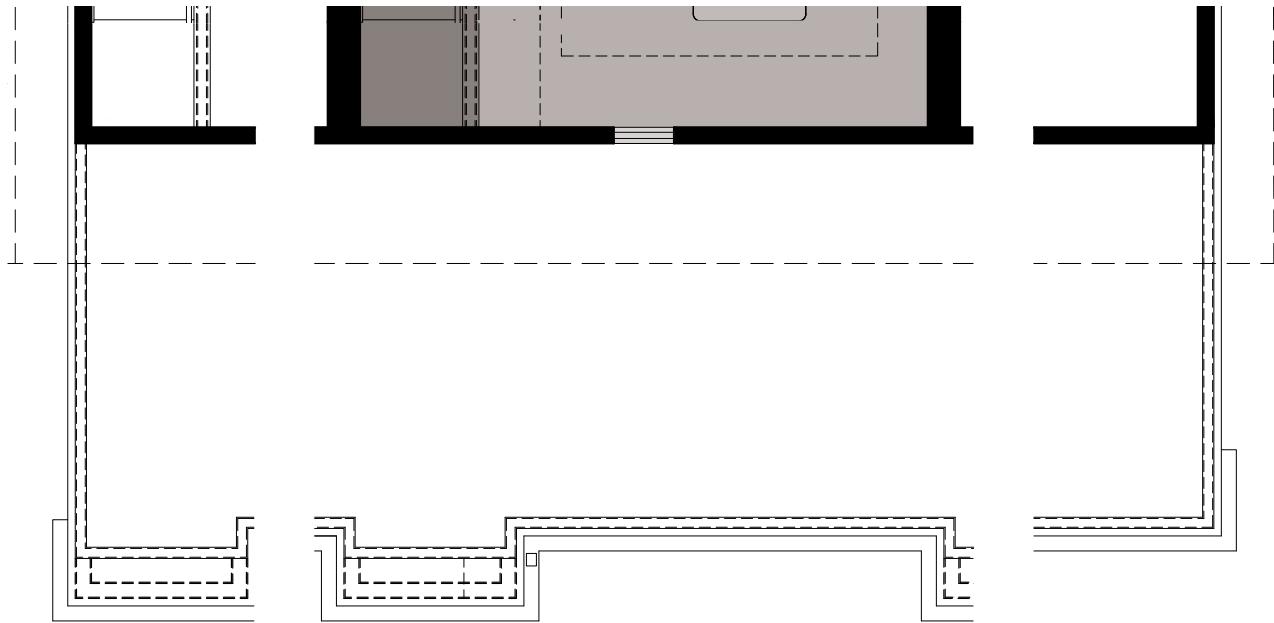
# THE AMARI | ALTERNATE LOFTS



*Typ. End*

*Typ. 'C' & 'D' Loft Level*

*Typ. End*



*Typ. End*

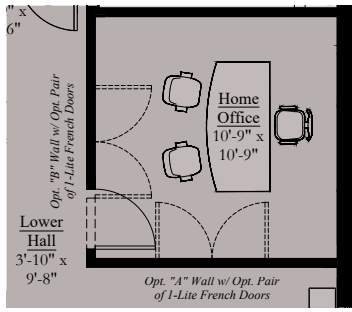
*Typ. 'I', 'J', 'K', 'L', & 'M' Loft Level*

*Typ. End*

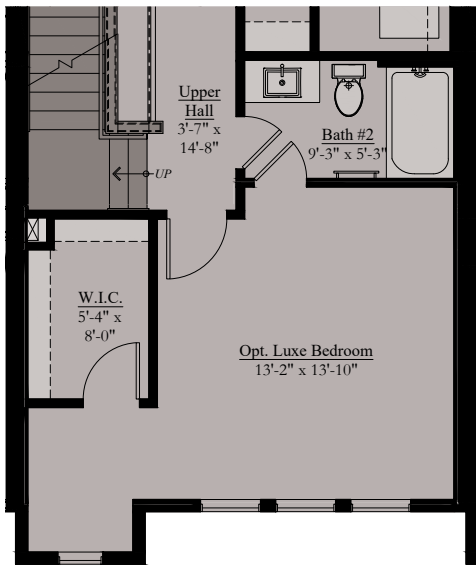
**THE AMARI**

Architectural drawings are proprietary to Wormald Corporation. Unauthorized use or duplication of floor plans, concepts, or elevations is strictly prohibited. **Architectural designs are approximate artist's renderings and are for illustrative purposes only. Actual design and detail will vary from what is shown and are subject to change without notice.** Landscape and furniture is for illustrative purposes only. Optional areas are illustrated. Windows, door locations, and square footage may vary per elevation. Please consult Sales Manager for details. © 2024 Wormald Corporation.

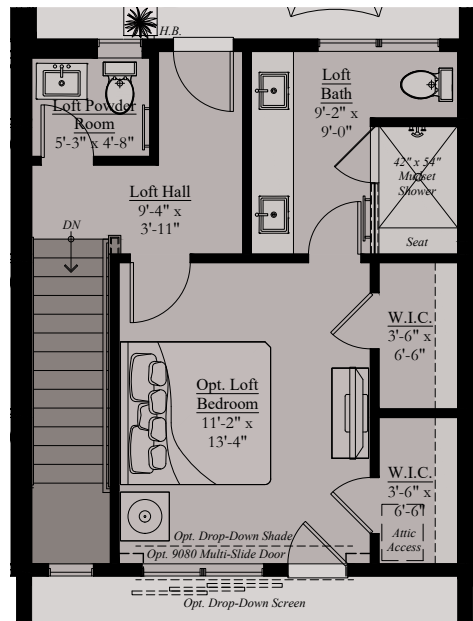
# THE AMARI | OPTIONS



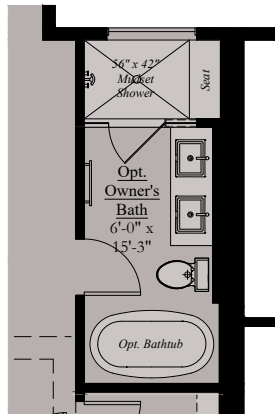
*Opt. Studio Office w/ French Doors*



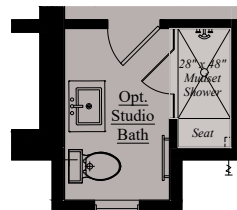
*Opt. Upper Level Luxe Bedroom*



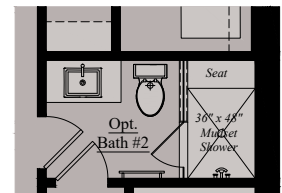
*Opt. Loft Level Suite w/ Front Terrace*



*Opt. Owner's Bath*



*Opt. Studio Bath*



*Opt. Bath #2*

**THE AMARI**

Architectural drawings are proprietary to Wormald Corporation. Unauthorized use or duplication of floor plans, concepts, or elevations is strictly prohibited. **Architectural designs are approximate artist's renderings and are for illustrative purposes only. Actual design and detail will vary from what is shown and are subject to change without notice.** Landscape and furniture is for illustrative purposes only. Optional areas are illustrated. Windows, door locations, and square footage may vary per elevation. Please consult Sales Manager for details. © 2024 Wormald Corporation.

**LOVE**  
WHERE  
**YOU**  
LIVE

W

W O R M A L D

[www.wormald.com](http://www.wormald.com)