

THE ALEXANDRIA



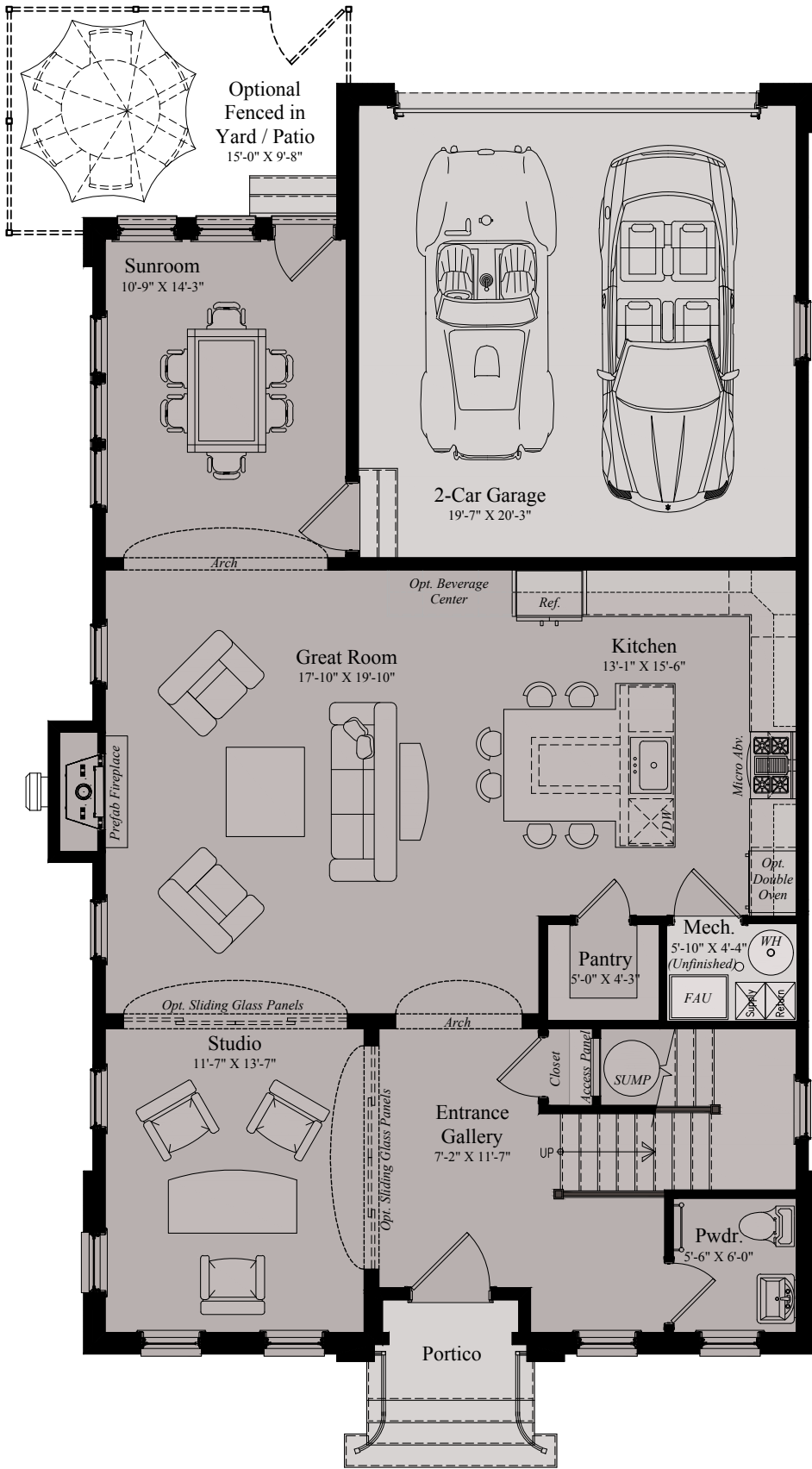
CROWN
The City Home Collection

Candice Grams, Sales Manager
540.809.6550 | crown@wormald.com
803 Crown Park Ave, Gaithersburg, MD 20878
Open Daily 11 a.m. - 5 p.m.
or by appointment

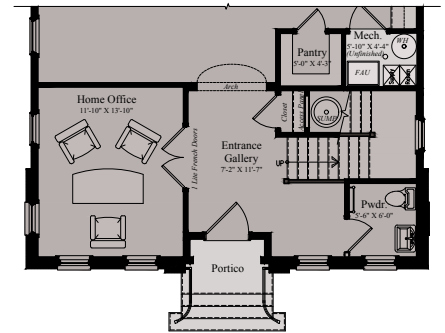
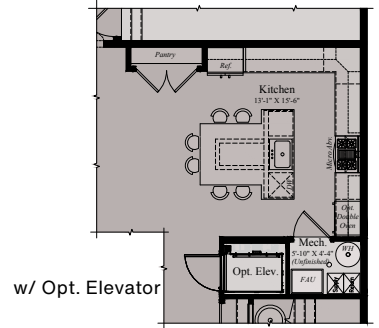
W
WORMALD

Brokers welcome. MHBR
No. 7342. Prices are
rounded and subject to
change without notice.



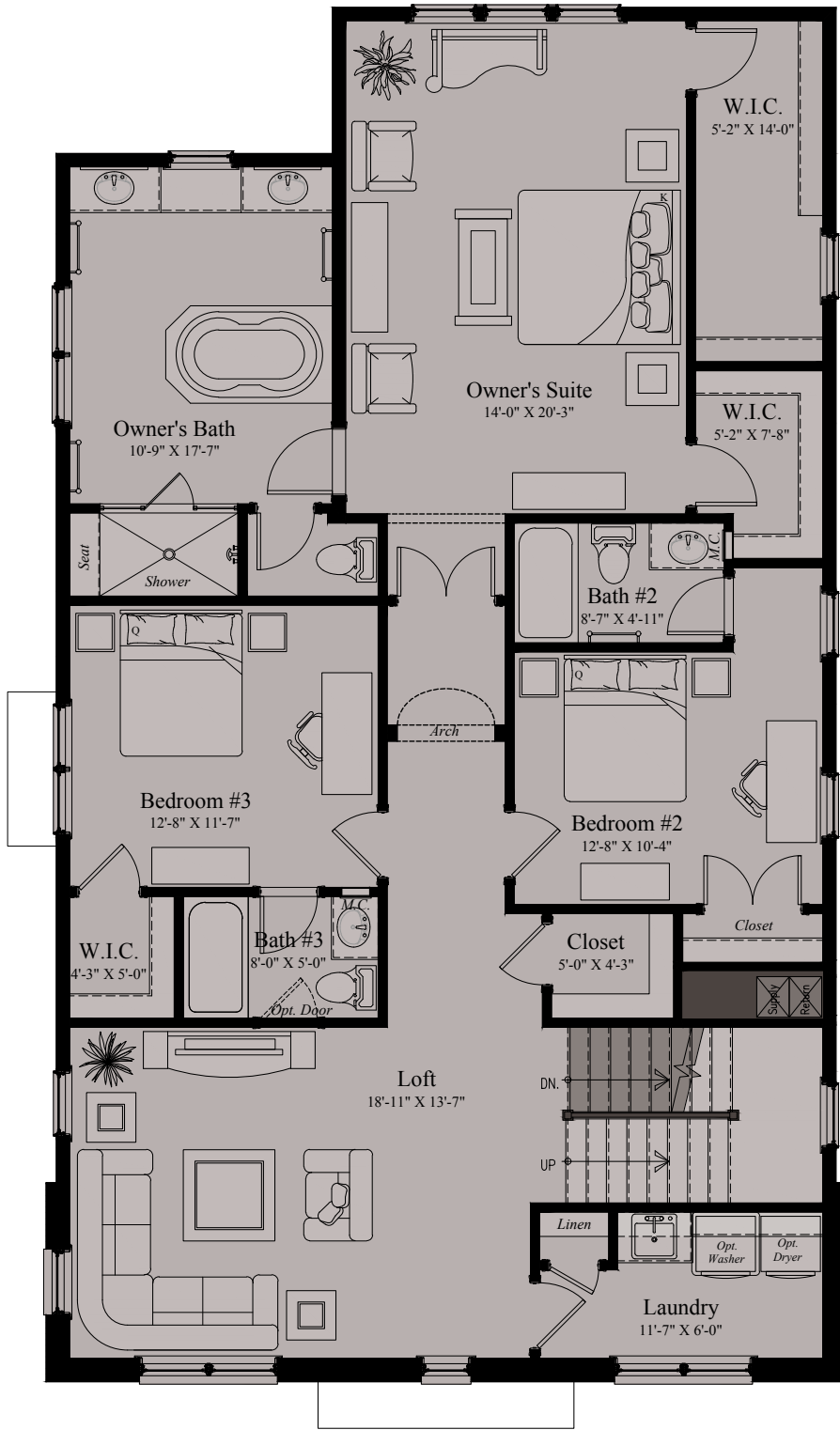


Elevation A, B, & C

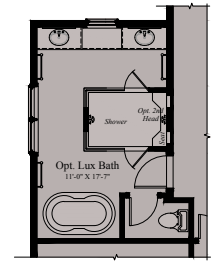


THE ALEXANDRIA | MAIN LEVEL

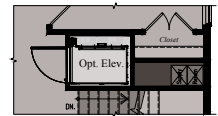
Architectural drawings are proprietary to Wormald Homes. Unauthorized use or duplication of floor plans, concepts, or elevations is strictly prohibited. Architectural designs are approximate artist's renderings and are for illustrative purposes only. Actual design and detail will vary from what is shown and are subject to change without notice. Landscape and furniture is for illustrative purposes only. Optional areas are illustrated. Windows, door locations, and square footage may vary per elevation. Please consult Sales Manager for details. © 2020 Wormald Homes.



Elevation A



w/ Opt. Lux Bath



w/ Opt. Elevator



Elevation B



Elevation C



Opt. Bedroom #4 (Elevation A)



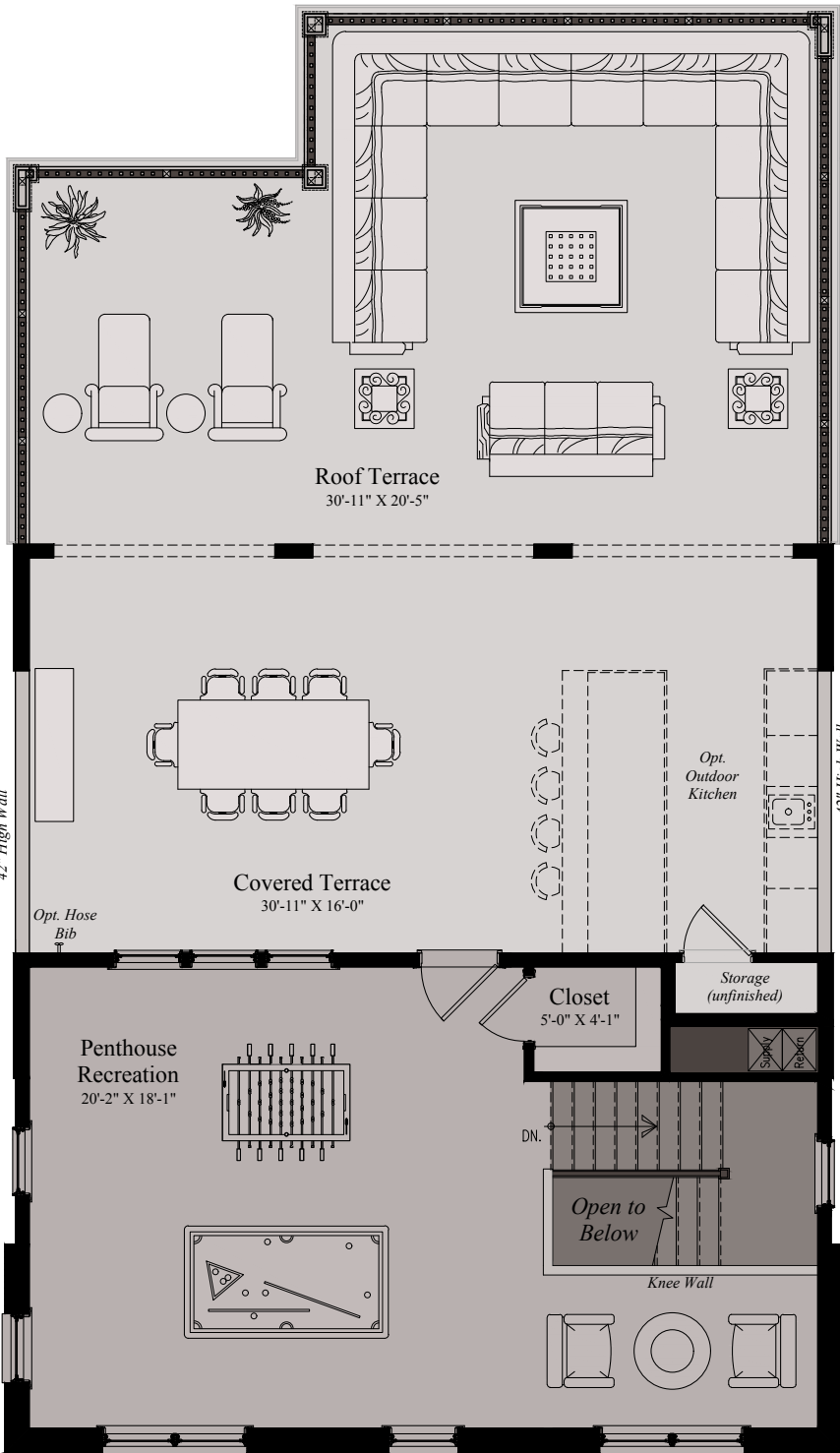
Opt. Bedroom #4 (Elevation B)



Opt. Bedroom #4 (Elevation C)

THE ALEXANDRIA | UPPER LEVEL

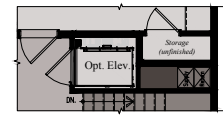
Architectural drawings are proprietary to Wormald Homes. Unauthorized use or duplication of floor plans, concepts, or elevations is strictly prohibited. Architectural designs are approximate artist's renderings and are for illustrative purposes only. Actual design and detail will vary from what is shown and are subject to change without notice. Landscape and furniture is for illustrative purposes only. Optional areas are illustrated. Windows, door locations, and square footage may vary per elevation. Please consult Sales Manager for details. © 2020 Wormald Homes.



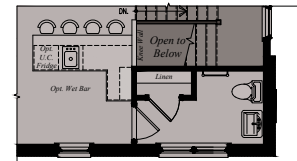
Elevation A & C



Elevation B



w/ Opt. Elevator



w/ Opt. Wet Bar and Opt. Powder Room

THE ALEXANDRIA | LOFT LEVEL

Architectural drawings are proprietary to Wormald Homes. Unauthorized use or duplication of floor plans, concepts, or elevations is strictly prohibited. **Architectural designs are approximate artist's renderings and are for illustrative purposes only. Actual design and detail will vary from what is shown and are subject to change without notice.** Landscape and furniture is for illustrative purposes only. Optional areas are illustrated. Windows, door locations, and square footage may vary per elevation. Please consult Sales Manager for details. © 2020 Wormald Homes.