

# THE DARTMOUTH

FROM APPROX. 1,700 SQ. FT.



Elevation B

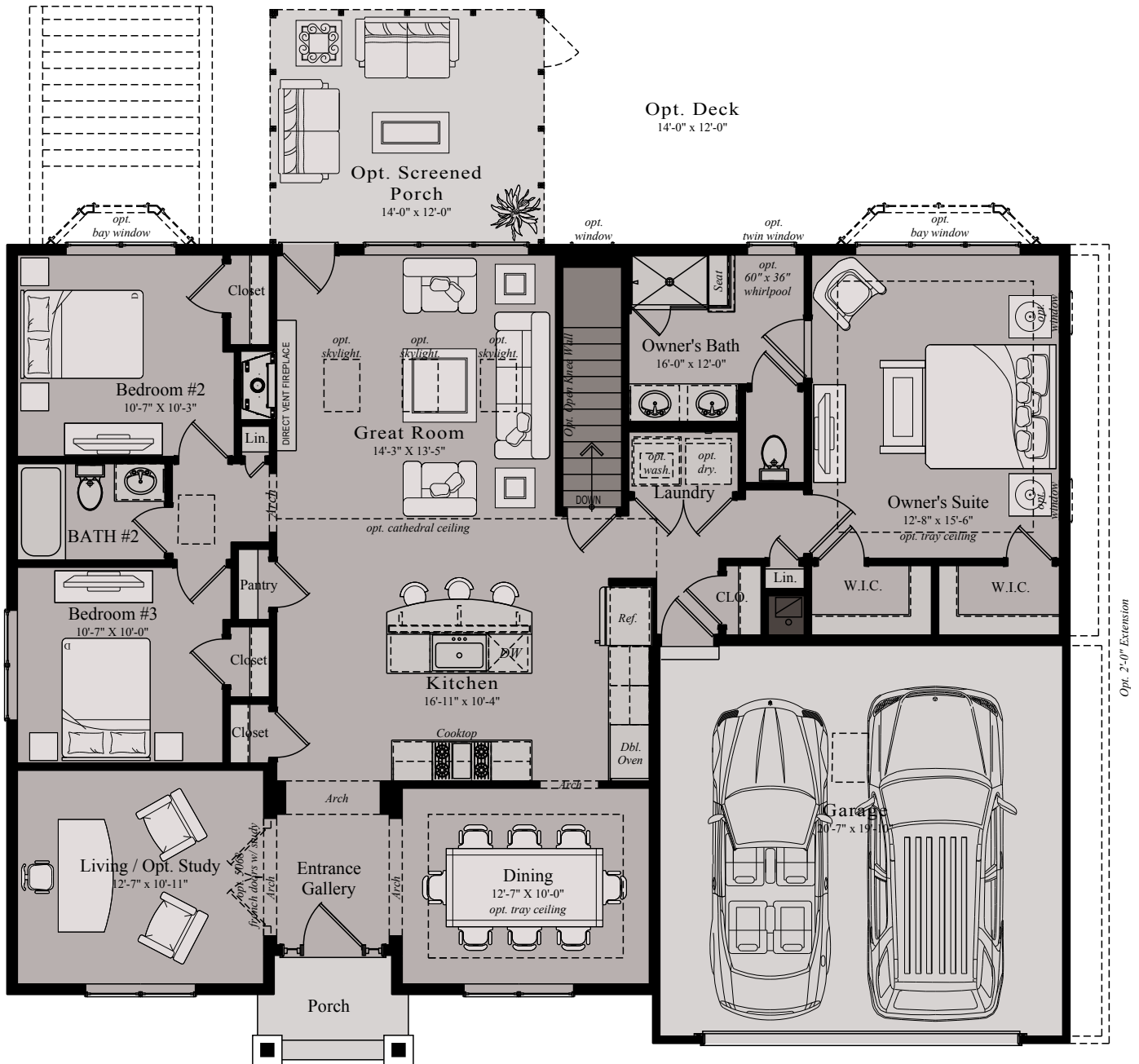
## **THE LINKS AT GETTYSBURG** The French Country Collection

Cindy Van Meter, Sales Manager  
717.359.8482 | [Cindy.VanMeter@wormald.com](mailto:Cindy.VanMeter@wormald.com)  
147 Savannah Drive, Gettysburg, PA 17325  
Open Thursday - Monday 11 a.m. - 5 p.m.  
or by appointment

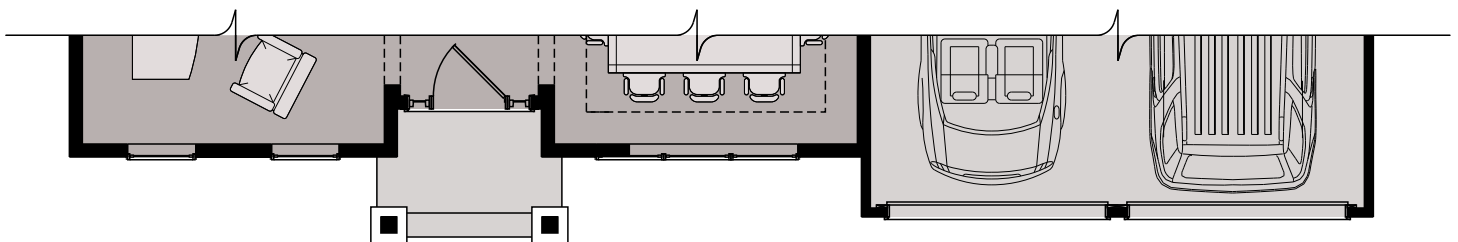
**W**  
W O R M A L D

Brokers welcome. Prices  
are rounded and subject to  
change without notice.





MAIN LEVEL - ELEVATION B



MAIN LEVEL - ELEVATION A PART. PLAN

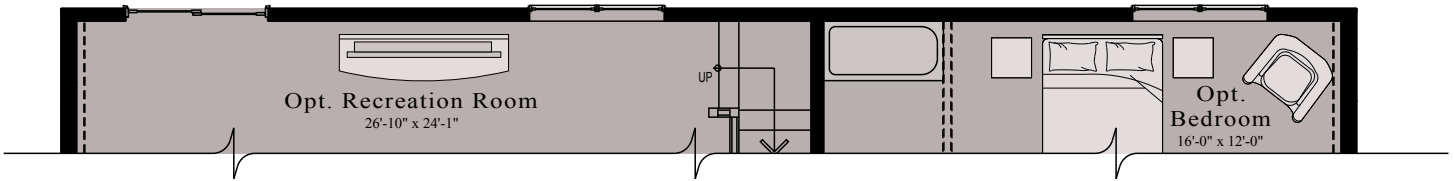
WORMALD CORPORATION - ALL RIGHTS RESERVED

All ideas, designs, arrangements and plans indicated or represented by this drawing and written material appearing herein constitute the original and unpublished work of the Wormald corporation and may not be duplicated, used or disclosed to any person, firm or corporation for any purpose whatsoever without the written consent of the wormald corporation. Actual product and specifications may vary in dimension or detail from these drawings and are subject to change without notice. Window and door locations vary per elevation. MHBR No. 3514

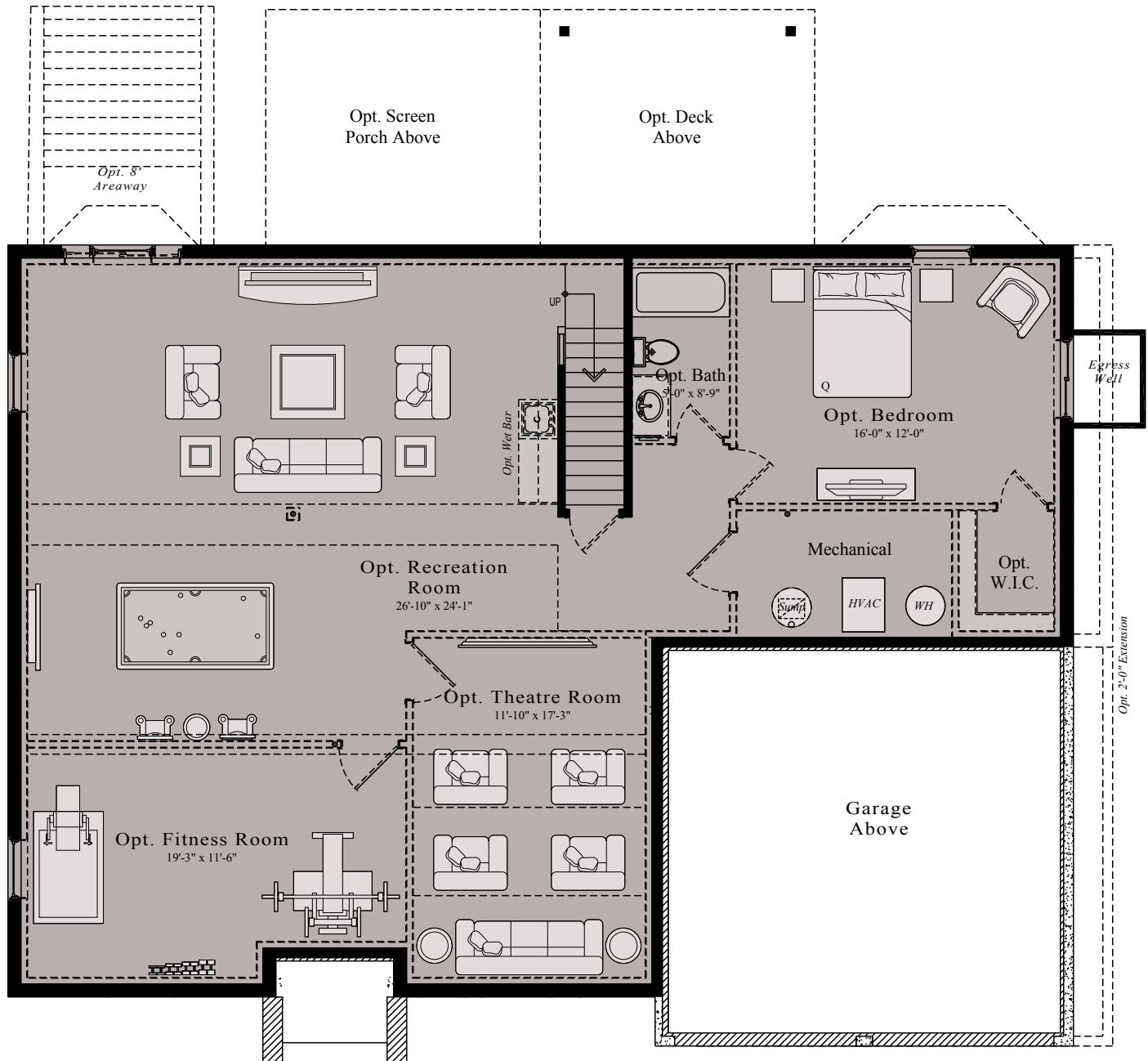


10/11/2018





LOWER LEVEL - PART. OPT. FINISHED PLAN  
WALK-OUT CONDITION



LOWER LEVEL - OPT. FINISHED PLAN IN-GROUND  
CONDITION

WORMALD CORPORATION - ALL RIGHTS RESERVED

All ideas, designs, arrangements and plans indicated or represented by this drawing and written material appearing herein constitute the original and unpublished work of the Wormald corporation and may not be duplicated, used or disclosed to any person, firm or corporation for any purpose whatsoever without the written consent of the wormald corporation. Actual product and specifications may vary in dimension or detail from these drawings and are subject to change without notice. Window and door locations vary per elevation. MHBR No. 3514



10/11/2018



**LOVE**

**WHERE**

**YOU**

**LIVE**

**W**

**W O R M A L D**

**[www.wormald.com](http://www.wormald.com)**